

Dawson Regional Land Use Plan

Government of Yukon – Conservation Values Analysis
October 7, 2020



Krysti Horton, Manager, Regional Land Use Planning
Energy, Mines, & Resources

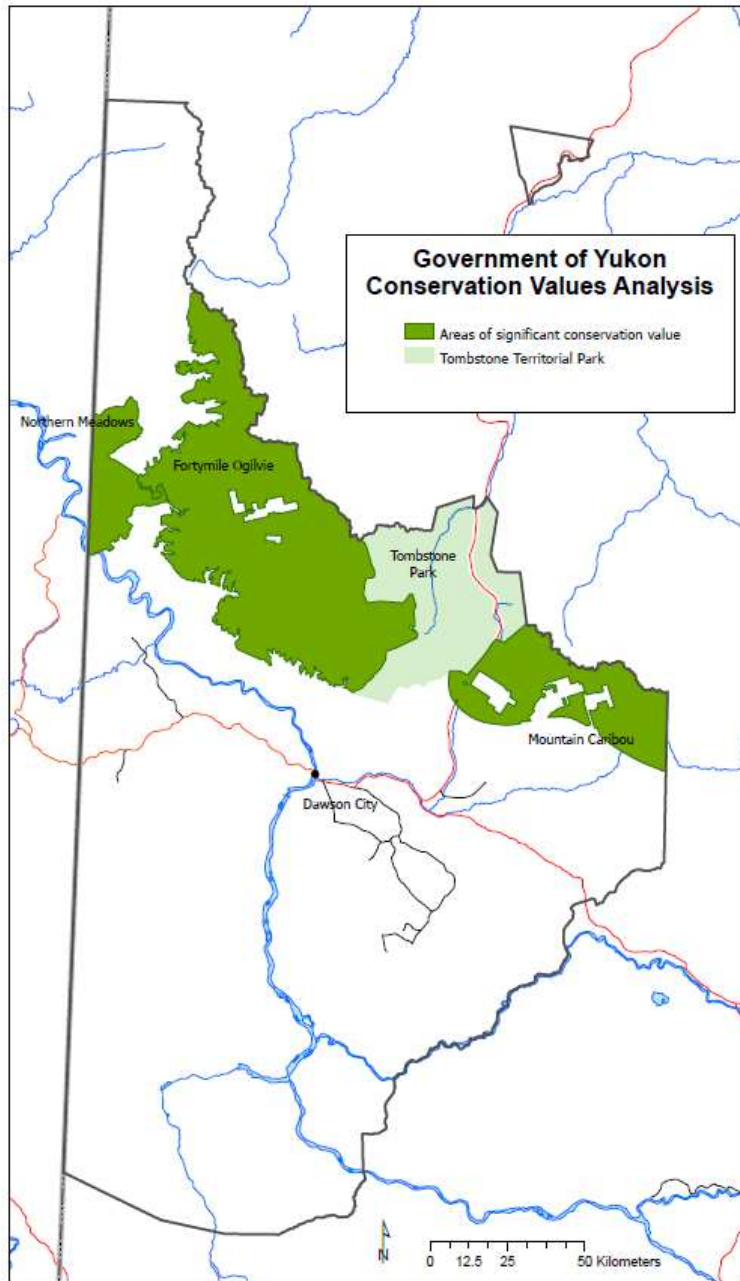
Karen Clyde, Strategic Advisor, Planning & Special Projects
Environment





Conservation values analysis – methodology overview

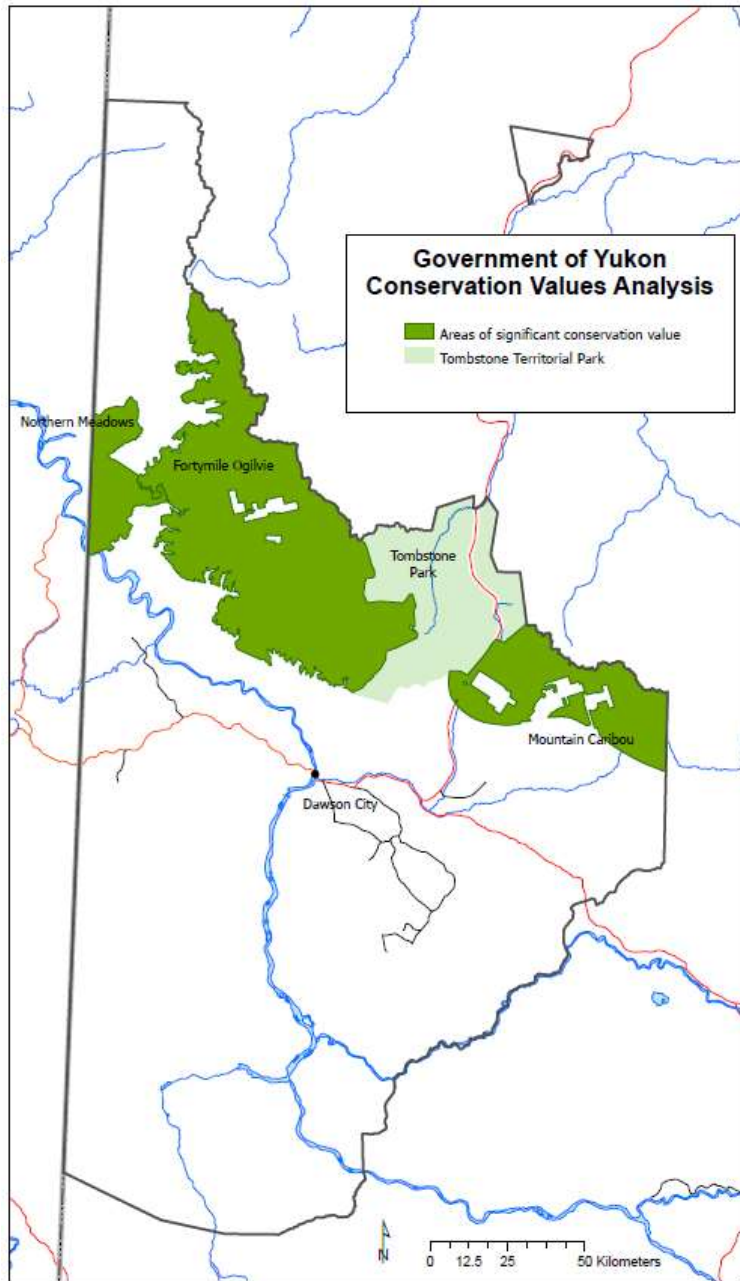
- Considered all environmental and spatial data that was provided Resource Assessment Report (e.g., wildlife key areas).
- Overlaid important ecological values on mineral prospectivity and existing claims.
- There are multiple competing values and considerations.





Northern Meadows

- 632km²
- Biodiversity-rich area contains endemic meadow habitats.
- Species of conservation concern include:
 - Yukon Podistera (SARA: Special Concern)
 - Yukon Wild Buckwheat (SARA: Special Concern)
 - Murray's Draba (COSEWIC assessment candidate)
- Fortymile, Porcupine and Hart River caribou herd habitat and movement corridors.
- Large numbers of Dall's sheep.
- Core region of North Ogilvie Mountains Ecoregion – underrepresented in protected areas system.
- Connectivity with Yukon-Charley National Preserve in Alaska
- Located in the Tatonduk River Watershed: ecologically intact and features a diversity of Beringian endemics and permanent freshwater springs.





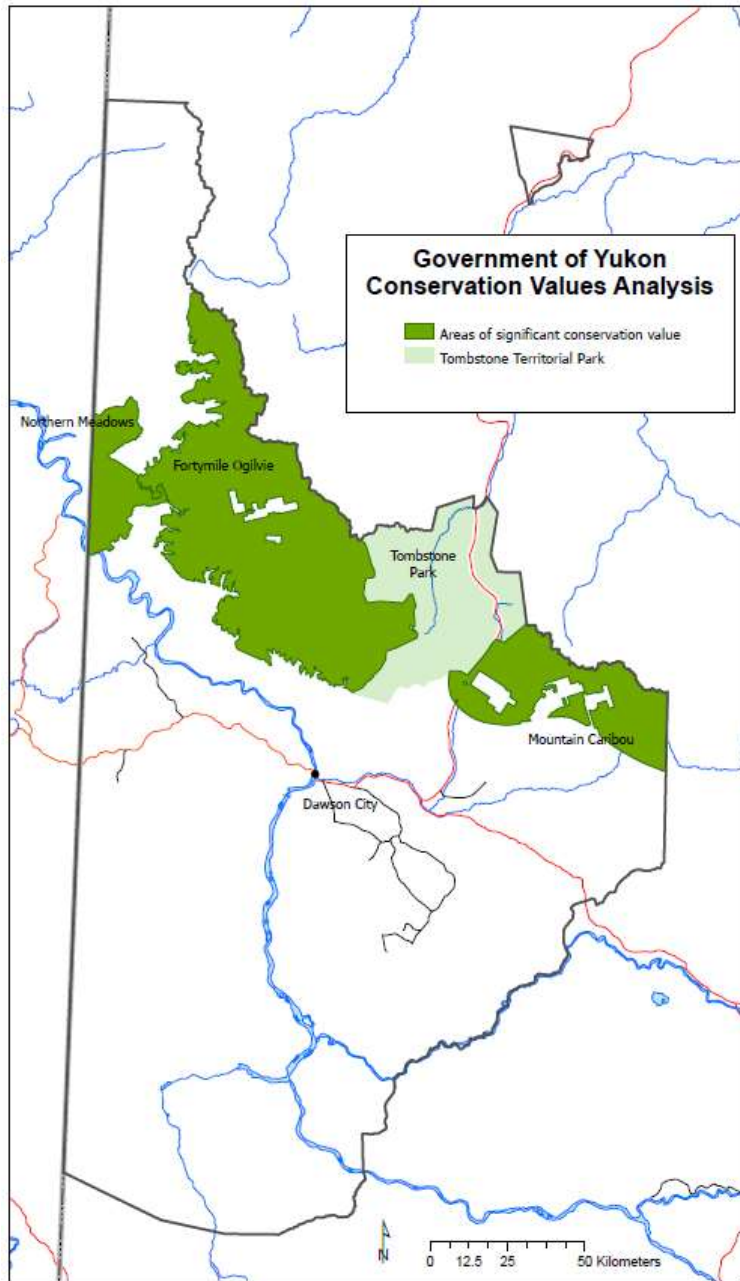
Ogilvie Mountains

- 4,780 km²
- Mount Klotz area of the polygon contains unique assemblages of plants and insects and Ogilvie Mountains have been identified by NatureServe Canada (2020) as one of three Yukon hotspots for nationally endemic species.
- Fortymile, Porcupine and Hart River caribou herd habitat and movement corridors.
- Large numbers of Dall's sheep.



Ogilvie Mountains continued

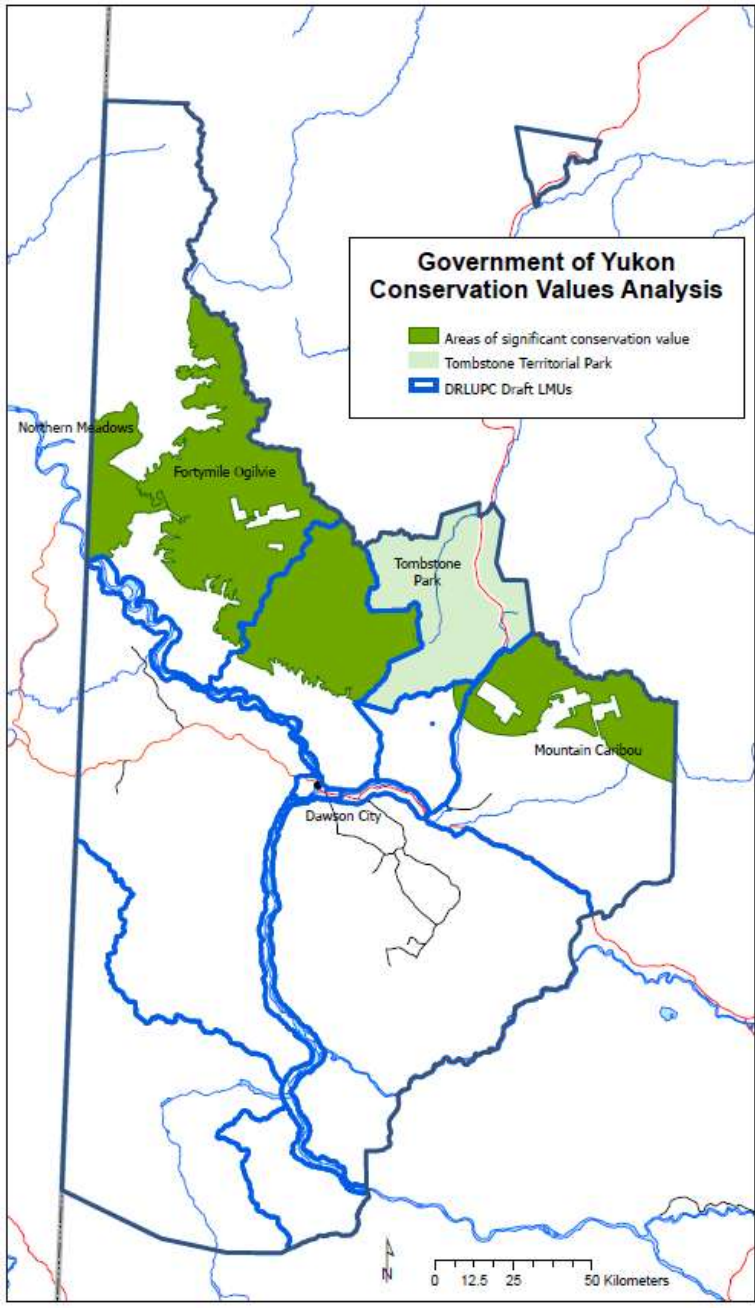
- Straddles the North Ogilvie Mountains Ecoregion and McQuesten Highlands which are under-represented and not represented, respectively, in Yukon's protected areas system.
- Provides opportunity for connectivity with the Ogilvie River Headwaters Wilderness Area (LMU1 of the Peel Plan) and the Kit Range/North Cache Creek Special Management Area (LMU 2 of the Peel Plan, as well as Tombstone Park. This is important for connectivity and Y2Y.
- Two Class 1 Quartz exploration programs for base and precious minerals established in area.
- Currently claims (Cobalt) are being accessed by air.
- There are areas of optimally prospective Level 2 in this area that are currently unclaimed.





Mountain Caribou

- 1635km²
- Hart River herd found here in high densities – Northern Mountain Woodland ecotype, Special Concern under SARA. Calving, post-calving, summer and rut habitat.
- Located within the McQuesten Highlands Ecoregions which is not represented in Yukon's protected areas system.
- Provides the opportunity to connect with West Hart River Wilderness Area (LMU 4 of the Peel Plan) and Tombstone Territorial Park.
- Mineral values exist including Class 1 Quartz land use operation(s) established in the area.
- Dawson Forest Management Plan designates area as Forest Resource Management Zone.





Thank you
Questions?