



# YG Response to Recommended Dawson Regional Land Use Plan



Presentation to Dawson Regional Planning Commission  
January 22, 2025





# Submission Package

- YG is providing the following documents to the Commission:
  - Ministerial letter
  - Memo
  - Map
  - Rationales for major proposed changes
  - Recommended Plan with tracked changes
  - Document design and writing style guidance
  - Table of all Plan recommendations and directions
  - Table summarizing all proposed changes
  - Scenarios report



# Themes of YG Proposed Modifications

- Implementability
- Sustainable development
- Cumulative effects
- Boundaries and designations
- Staking withdrawals
- Information updates and structural changes



# Implementability

- The Government of Yukon proposes modifications to the Recommended Plan text to improve the clarity of the document for all users, so it is implementable.
- We have provided a summary report of the scenario exercise run by the Parties with input from regulators and industry, to highlight some of the implementation concerns raised.



# Adaptive Management

- The Government of Yukon recommends that the Final Recommended Plan further address how adaptive management will work in practice.
- The process for revising the Plan, including variances, amendments and reviews, must also be carefully considered to ensure the Plan can adapt to changing circumstances and should be established prior to the completion of the Final Recommended Plan.



# Sustainable Development & Socio-economic Wellbeing

- The Government of Yukon deeply values sustainable development as a socio-economic benefit that does not undermine the ecological and social systems upon which communities and societies are dependent.
- Our proposed modifications aim to integrate sustainable development and socio-economic wellbeing more fulsomely throughout the Plan.



# Cumulative Effects Framework

- The Recommended Plan has guidance to track surface disturbance and linear feature density, which are indicators of human activity on the landscape, not of cumulative effects.
- The Government of Yukon proposes adding value-based indicators for which we have historic and ongoing data (wildfire, lichen cover, and caribou demographic rates) to help provide a more holistic view of cumulative effects.
- We support further development of indicators (e.g. water and socio-economic indicators) through the Cumulative Effects Working Group and ask for the Plan to provide a mechanism to incorporate these during implementation.



# Cumulative Effects Thresholds

Land Management Unit Designation	Surface disturbance critical threshold	Yukon government's position	Linear disturbance critical thresholds	Yukon government's position
Integrated Stewardship Areas 1	0.25%	Supported	0.25 km/km <sup>2</sup>	Supported
Integrated Stewardship Areas 2	1%	Supported	0.5 km/km <sup>2</sup>	Supported
Integrated Stewardship Areas 3	2%	Proposes 2.5% (+ 0.5%)	1.0 km/km <sup>2</sup>	Supported
Integrated Stewardship Areas 4	4%	Proposes 5% (+ 1%)	2.0 km/km <sup>2</sup>	Supported

- We additionally propose removing the precautionary cumulative effects thresholds

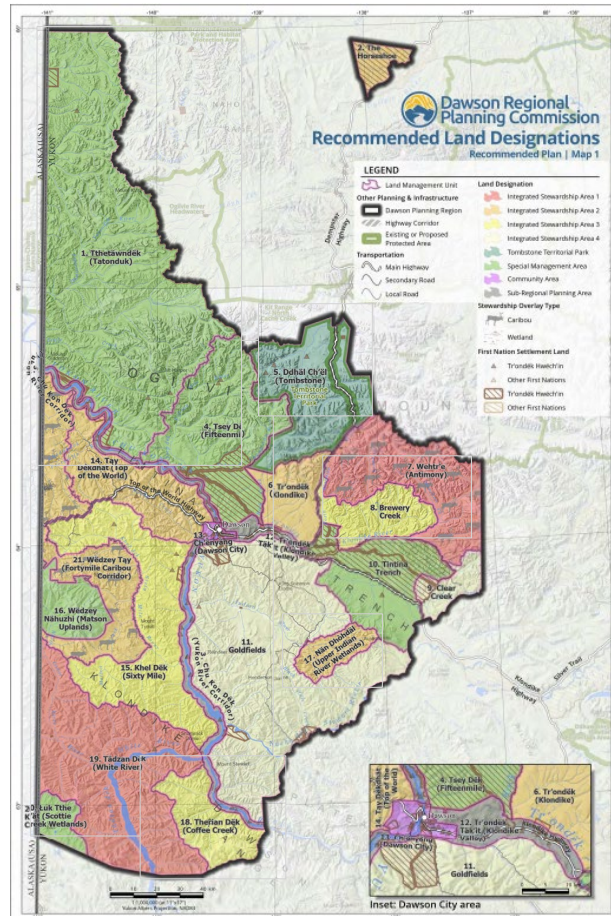


# Reclamation and Restoration

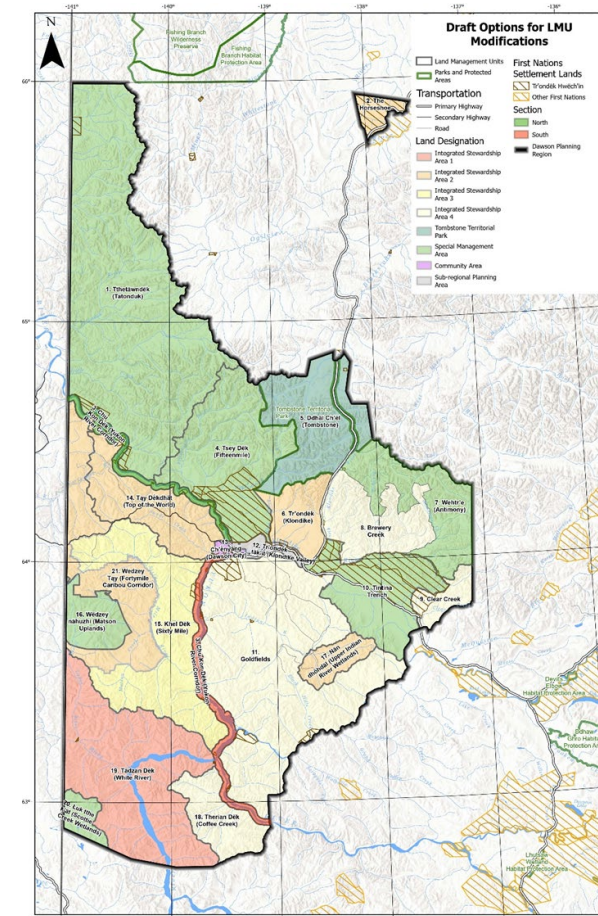
- The Government of Yukon proposes the Final Recommended Plan should provide clear definitions of reclamation and restoration.
  - Calculations for surface disturbance and linear feature density account for existing disturbance.
  - The point at which a previously disturbed area is no longer counted towards the thresholds needs to be clear – a new term for this point may be needed (recovered).
- This is essential for the functioning of the plan.
- We support the further development of these definitions and processes through the Cumulative Effects Working Group.

# Landscape Management Units

## Recommended Plan



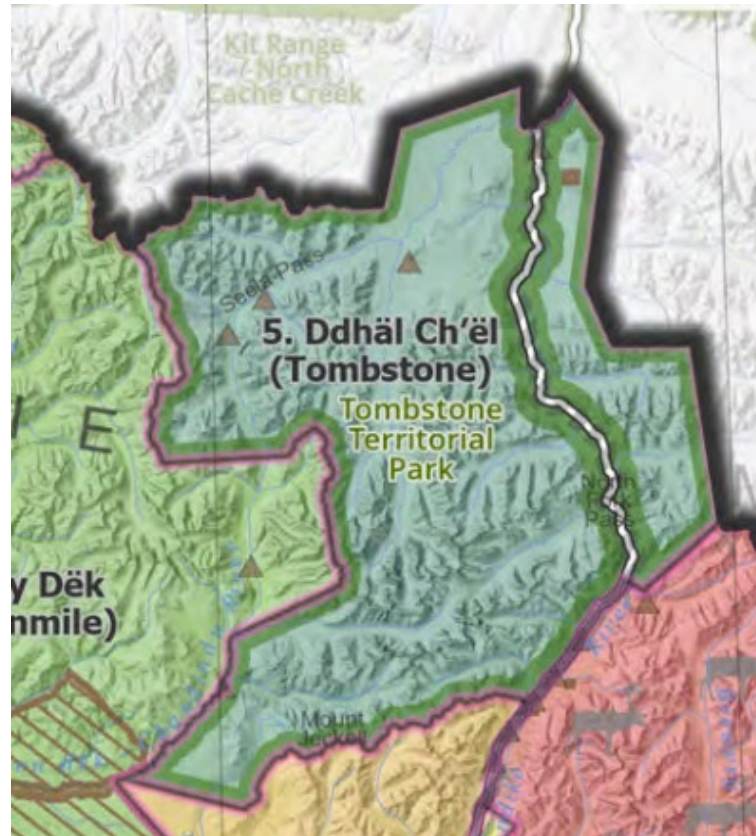
## YG Proposed Modifications



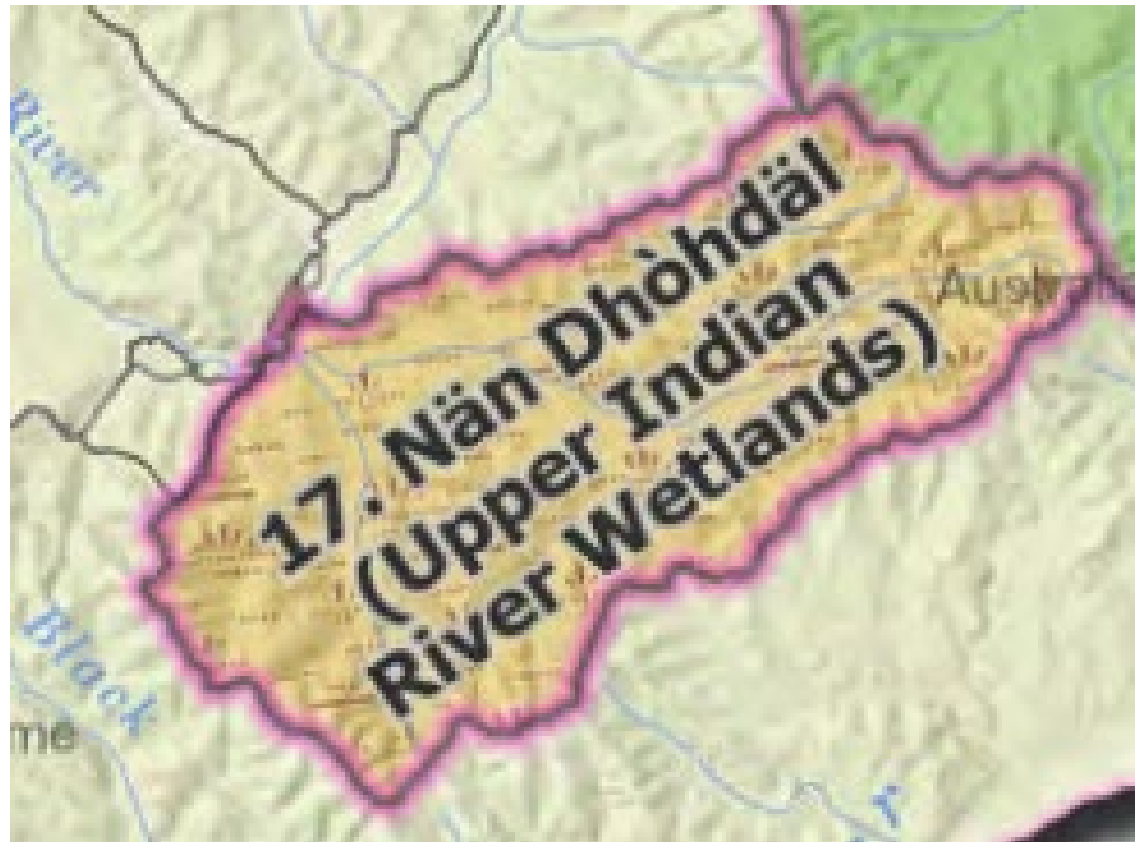
# LMU 1 Tatonduk



# LMU 5 Tombstone Territorial Park

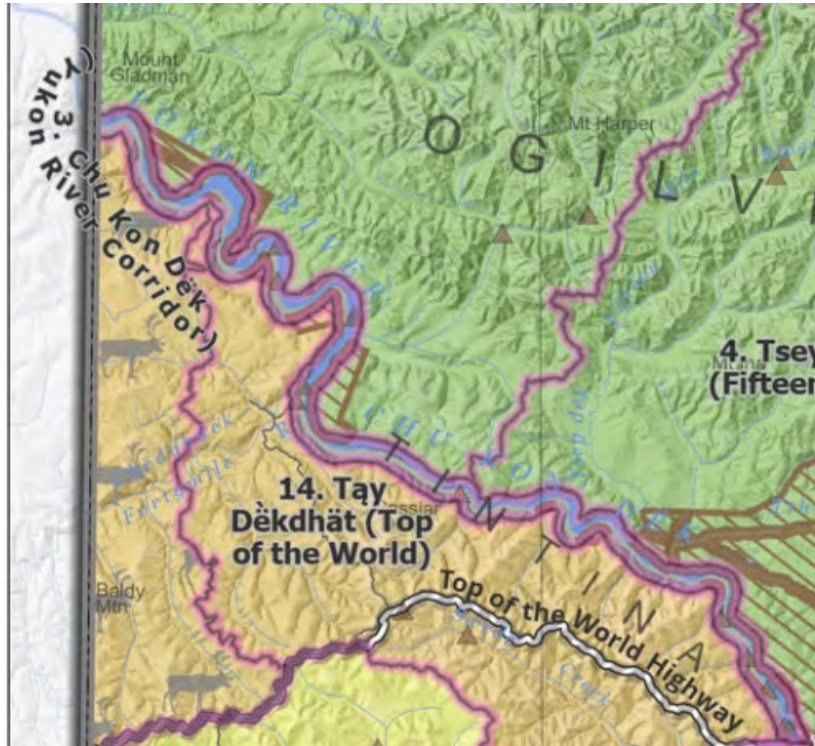


# LMU 17 Upper Indian River Wetlands

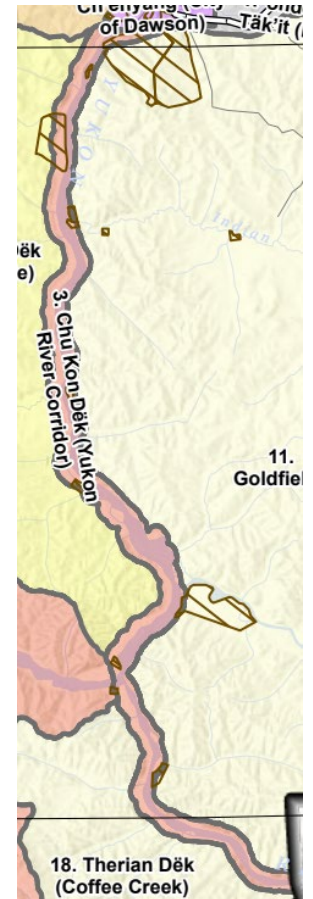
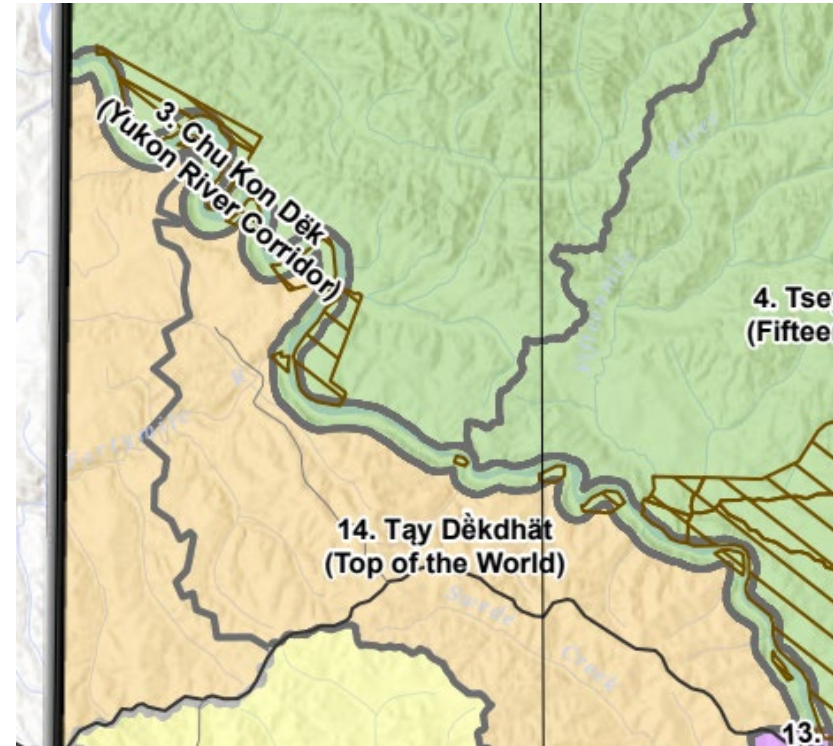


# LMU 3 Yukon River Corridor

## Recommended Plan

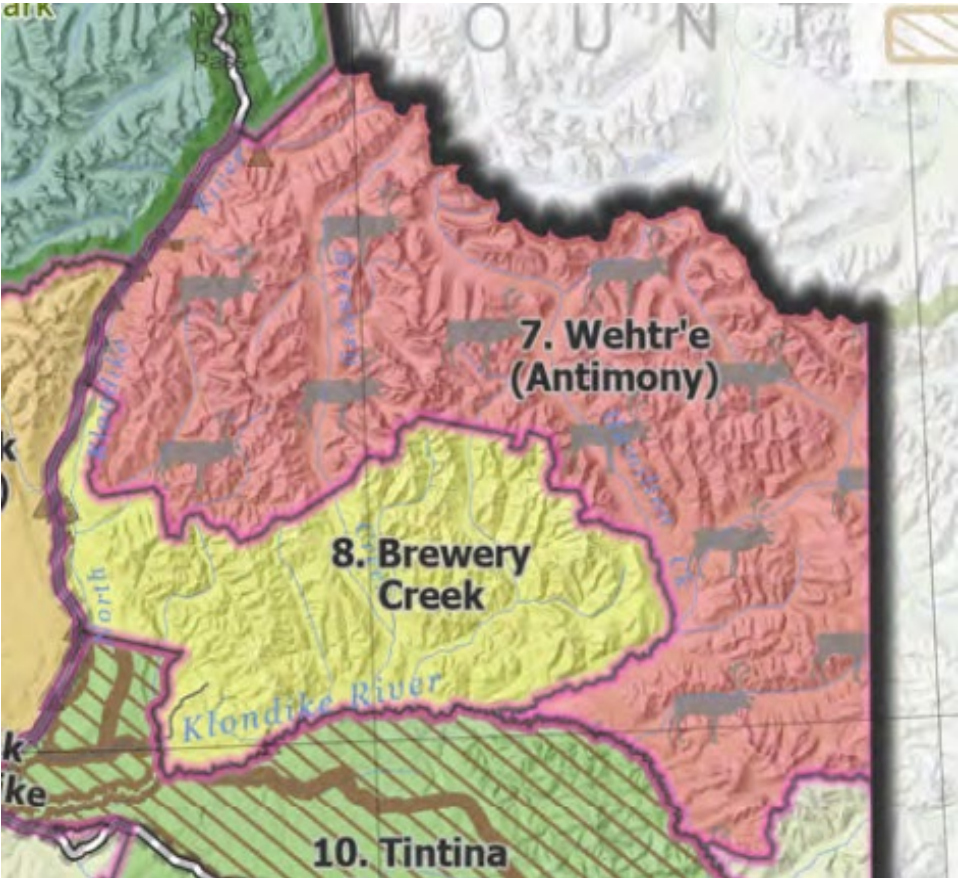


## YG Proposed Modification

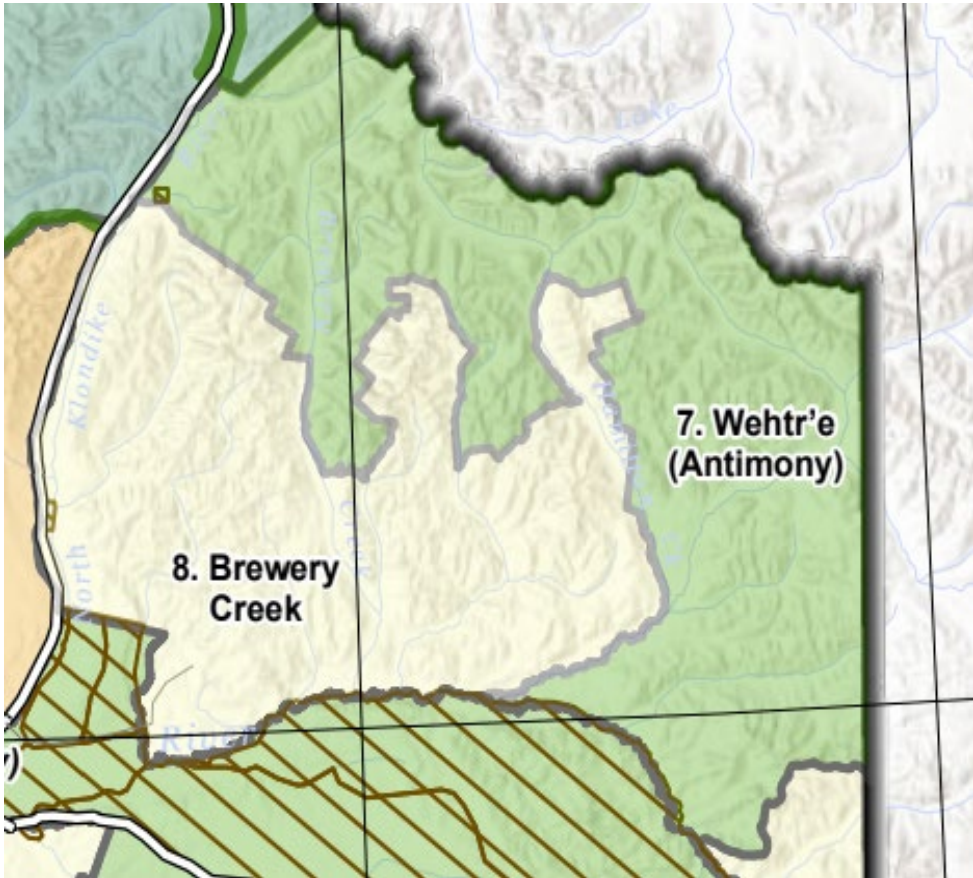


# LMUs 7 Antimony and 8 Brewery Creek

Recommended Plan



YG Proposed Modification

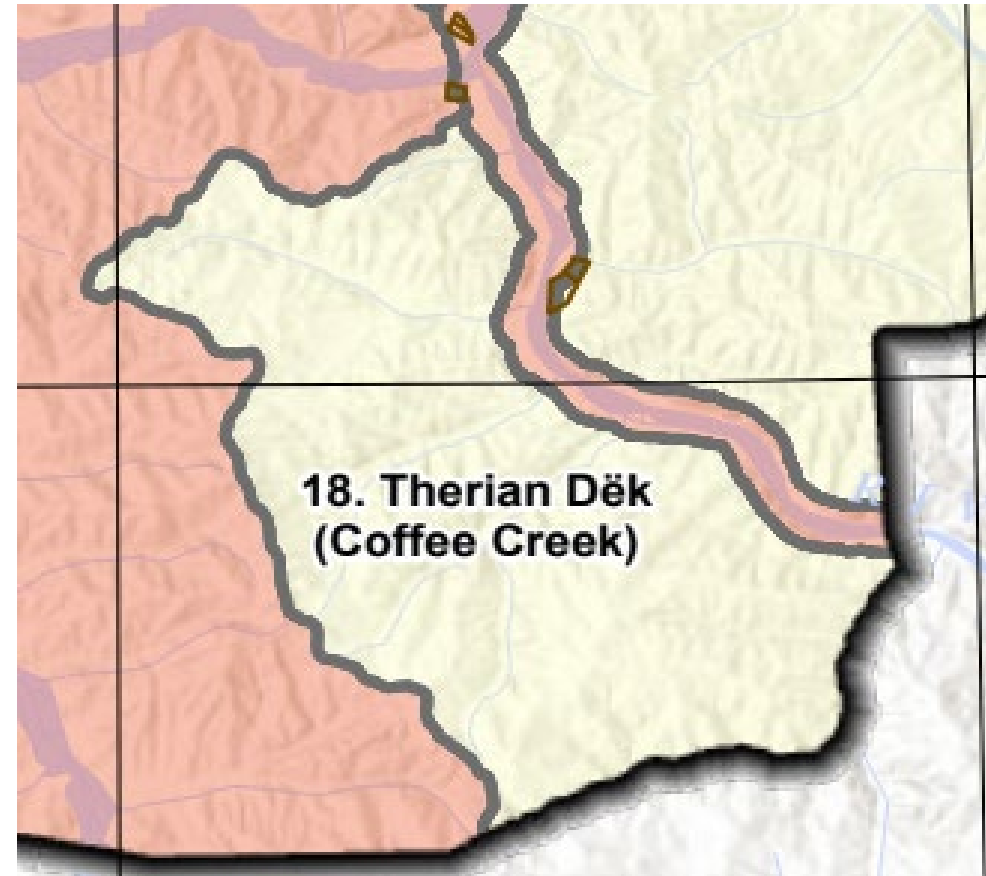


# LMU 18 Coffee Creek

Recommended Plan



YG Proposed Modification





# Special Management Areas

- The Government of Yukon supports designating 39.9 per cent of public lands in the region as Special Management Areas, contributing to about 45 per cent of the region having a conservation objective.
- We support Tr'ondëk Hwëch'in's request to remove Settlement Lands from SMAs.
- We recommend providing a distinct definition consistent with the regional planning process, and request clarity about the cumulative effects thresholds.
- We recommend that the special management directions clearly identify what land uses are allowed or restricted within these areas.
  - Some protected area designation types may be limited by the land uses allowed.



# Staking Withdrawals

- The Government of Yukon supports staking withdrawals in Special Management Areas.
- We propose that the Final Recommended Plan should provide sufficient direction to allow for sustainable development in Integrated Stewardship Areas to enable removing interim withdrawals in these areas.



# Caribou conservation

- The Government of Yukon supports the Technical Working Group further developing the concept of Caribou Stewardship Areas. We see that it could:
  - Expand to align with the herd range boundaries of the Northern Mountain Caribou and reflect important areas for the Fortymile herd.
  - Provide project-specific considerations to guide assessment and regulation, with flexibility and adaptability.
- We want to ensure that proposed activities do not impact Fortymile summer range area west of Sixty Mile Road.



# Wetlands

- The Government of Yukon provided updates in the plan to align with the Wetland Stewardship Policy, which was released in 2022.
- We support the three Wetlands of Special Importance, and provided suggested boundaries based on wetland mapping.
- We suggest that the buffers around protected wetlands align with the buffers used in the *Forest Resources Regulations*.



# Climate Change, Biodiversity and Species at Risk

- The Government of Yukon provided climate change data and projections to be able to have more informed and regionally specific actions and recommendations in the plan.
- We also provided updated information for each Land Management Unit regarding Species at Risk and unique ecosystems.



# Access

- The Government of Yukon is proposing a new access management chapter to outline considerations for access in one location rather than in multiple subsections across the document.
- The Plan should provide further guidance on access development across the planning region to reduce the number of future access management plans needed for individual LMUs.



# Structural Changes

- The Government of Yukon proposed modifications to improve navigation of the document and clarity for readers and to reduce repetition.
- Our modifications are proposed to reorganize certain sections, clearly lay out when management directions apply, and improve the terminology used in the document.



# White River First Nation

- White River First Nation has asserted rights in the southern portion of the Dawson Region.
- The Government of Yukon supports White River First Nation's request to the Commission to mention White River First Nation by name in the Final Recommended Plan text in areas of the Plan overlapping with their asserted territory.

**Thank you!**

