

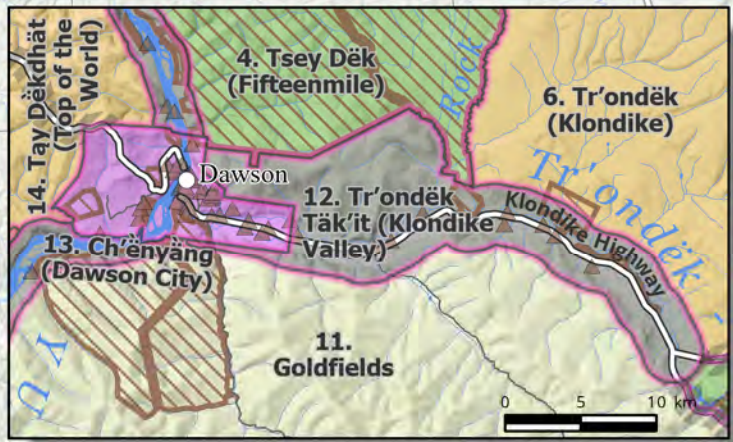
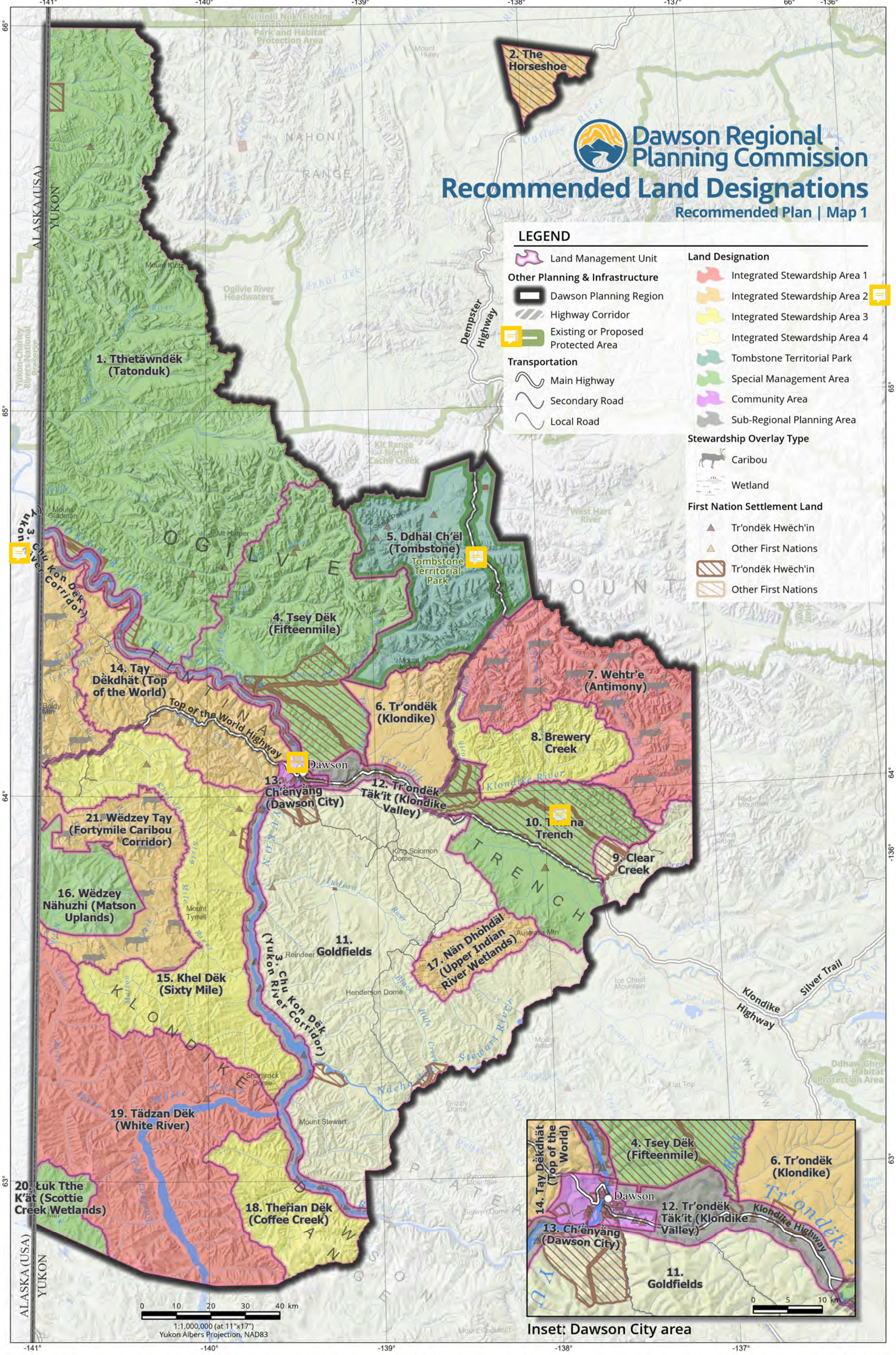
Dawson Regional Planning Commission

Recommended Land Designations

Recommended Plan | Map 1

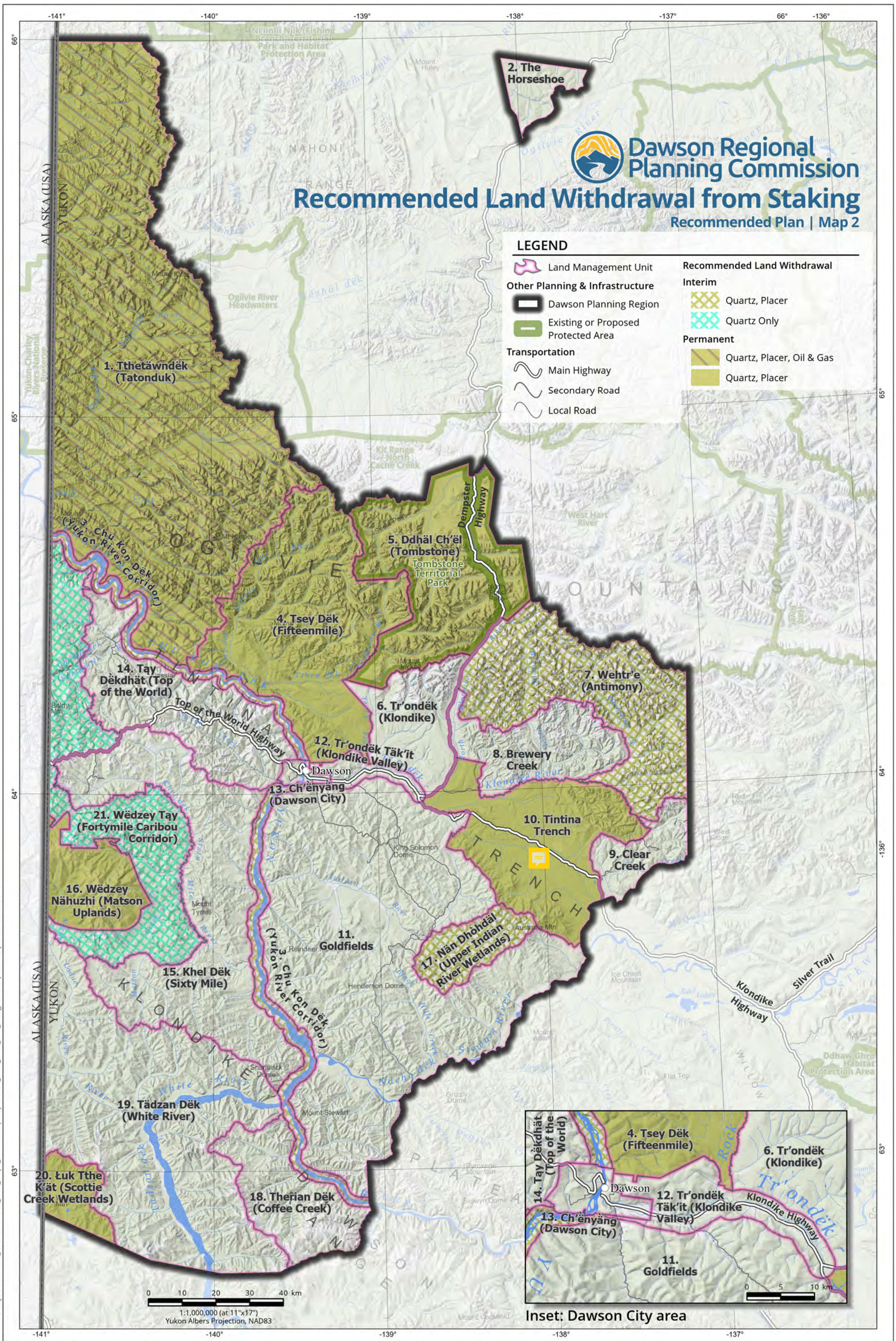
LEGEND

- Land Management Unit
- Other Planning & Infrastructure**
 - Dawson Planning Region
 - Highway Corridor
 - Existing or Proposed Protected Area
- Transportation**
 - Main Highway
 - Secondary Road
 - Local Road
- Land Designation**
 - Integrated Stewardship Area 1
 - Integrated Stewardship Area 2
 - Integrated Stewardship Area 3
 - Integrated Stewardship Area 4
 - Tombstone Territorial Park
 - Special Management Area
 - Community Area
 - Sub-Regional Planning Area
- Stewardship Overlay Type**
 - Caribou
 - Wetland
- First Nation Settlement Land**
 - Tr'ondëk Hwëch'in
 - Other First Nations
 - Tr'ondëk Hwëch'in
 - Other First Nations



File & Layout: Dawson_Recommended_Plan_Maps_20211223 | Map01to08_LMU_Data_and_Designations | Date Exported: 2022-06-15

Data sources: Maps in this series includes base and thematic data provided by NRCan, GeoYukon (Yukon Government), Tr'ondëk Hwëch'in Government, US National Parks Service, Ducks Unlimited Canada, YLUPC, NYPC, or DRPC. **Data disclaimer:** This map is a graphical representation depicting the approximate size, configuration, and spatial relationship of geographic features. Some datasets have specific disclaimers available from the data provider. While great care has been taken to ensure the best possible quality, this document is neither intended for legal descriptions nor to calculate precise areas, dimensions, or distances. It is possible for errors, omissions, and inaccuracies occur in these data which is beyond our control. Wildlife Key Areas (WKA) are compiled by the Yukon Department of Environment WKA Inventory Program (2014 and 2019), against 1:250,000 NTDB from various data sources. Key Areas are based on observed locations of wildlife at key times of year, not on habitat assessment. With new information, boundaries and designations of Key Areas can change and additional Key Areas can be identified. Furthermore, Key Areas are not the only sites important for wildlife. Other information sources can identify other sites important for wildlife for reasons outside the scope of the WKA Inventory Program. Updates to Key Areas occur only periodically. For the most current information, please consult with the Regional Biologist for your area of interest. If you have questions or would like to contribute to the WKA database, please contact the WKA Inventory Program. Digital copies of this map may be obtained from the Dawson Regional Planning Commission and the Yukon Land Use Planning Council websites at: dawson.planyukon.ca and www.planyukon.ca



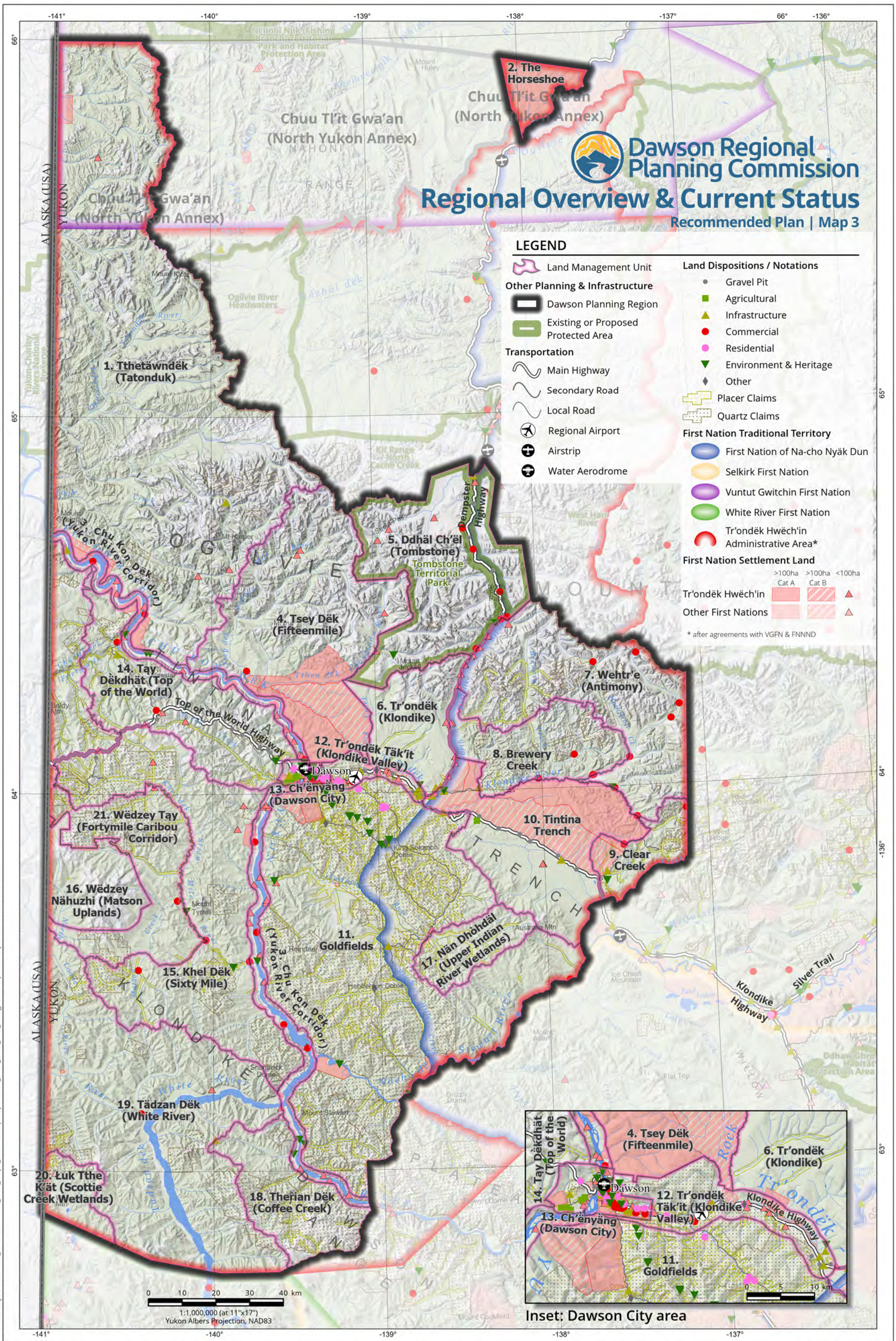
Dawson Regional Planning Commission
Recommended Land Withdrawal from Staking
 Recommended Plan | Map 2

LEGEND

- Land Management Unit
- Other Planning & Infrastructure**
- Dawson Planning Region
- Existing or Proposed Protected Area
- Transportation**
- Main Highway
- Secondary Road
- Local Road
- Recommended Land Withdrawal**
- Interim**
- Quartz, Placer
- Quartz Only
- Permanent**
- Quartz, Placer, Oil & Gas
- Quartz, Placer

File & Layout: Dawson_Recommended_Plan_Maps_20211223 | Map01to08_LMU_Data_and_Designations | Date Exported: 2022-06-15

Data sources: Maps in this series includes base and thematic data provided by NRCan, GeoYukon (Yukon Government), Tr'ondëk Hwëch'in Government, US National Parks Service, Ducks Unlimited Canada, YLUPC, NYPC, or DRPC. **Data disclaimer:** This map is a graphical representation depicting the approximate size, configuration, and spatial relationship of geographic features. Some datasets have specific disclaimers available from the data provider. While great care has been taken to ensure the best possible quality, this document is neither intended for legal descriptions nor to calculate precise areas, dimensions, or distances. It is possible for errors, omissions, and inaccuracies occur in these data which is beyond our control. Wildlife Key Areas (WKA) are compiled by the Yukon Department of Environment WKA Inventory Program (2014 and 2019), against 1:250,000 NTDB from various data sources. Key Areas are based on observed locations of wildlife at key times of year, not on habitat assessment. With new information, boundaries and designations of Key Areas can change and additional Key Areas can be identified. Furthermore, Key Areas are not the only sites important for wildlife. Other information sources can identify other sites important for reasons outside the scope of the WKA Inventory Program. Updates to Key Areas occur only periodically. For the most current information, please consult with the Regional Biologist for your area of interest. If you have questions or would like to contribute to the WKA database, please contact the WKA Inventory Program. Digital copies of this map may be obtained from the Dawson Regional Planning Commission and the Yukon Land Use Planning Council websites at: dawson.planyukon.ca and www.planyukon.ca



Dawson Regional Planning Commission

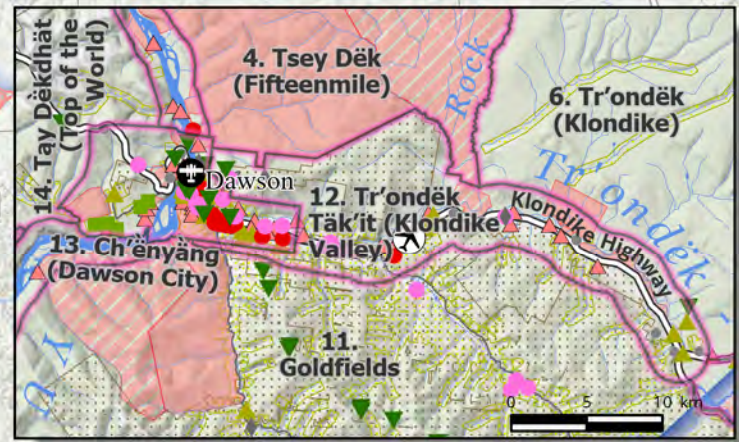
Regional Overview & Current Status

Recommended Plan | Map 3

LEGEND

- Land Management Unit
- Dawson Planning Region
- Existing or Proposed Protected Area
- Main Highway
- Secondary Road
- Local Road
- Regional Airport
- Airstrip
- Water Aerodrome
- Agricultural
- Infrastructure
- Commercial
- Residential
- Environment & Heritage
- Other
- Placer Claims
- Quartz Claims
- First Nation Traditional Territory**
 - First Nation of Na-cho Nyäk Dun
 - Selkirk First Nation
 - Vuntut Gwitchin First Nation
 - White River First Nation
 - Tr'ondëk Hwëch'in Administrative Area*
- First Nation Settlement Land**
 - >100ha Cat A
 - >100ha Cat B
 - <100ha
- Other First Nations**
 - >100ha Cat A
 - >100ha Cat B
 - <100ha

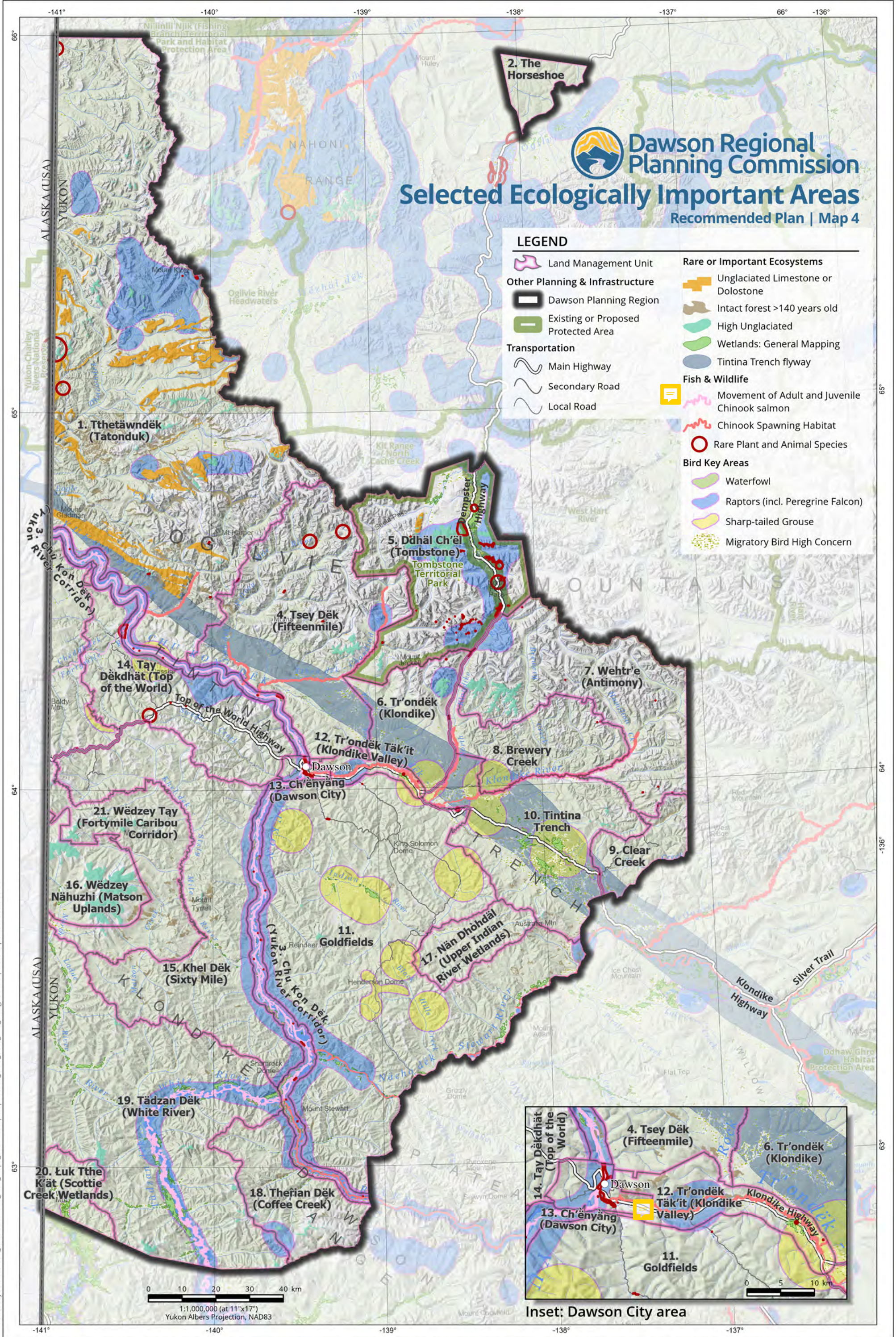
* after agreements with VGFN & FNNND



Inset: Dawson City area

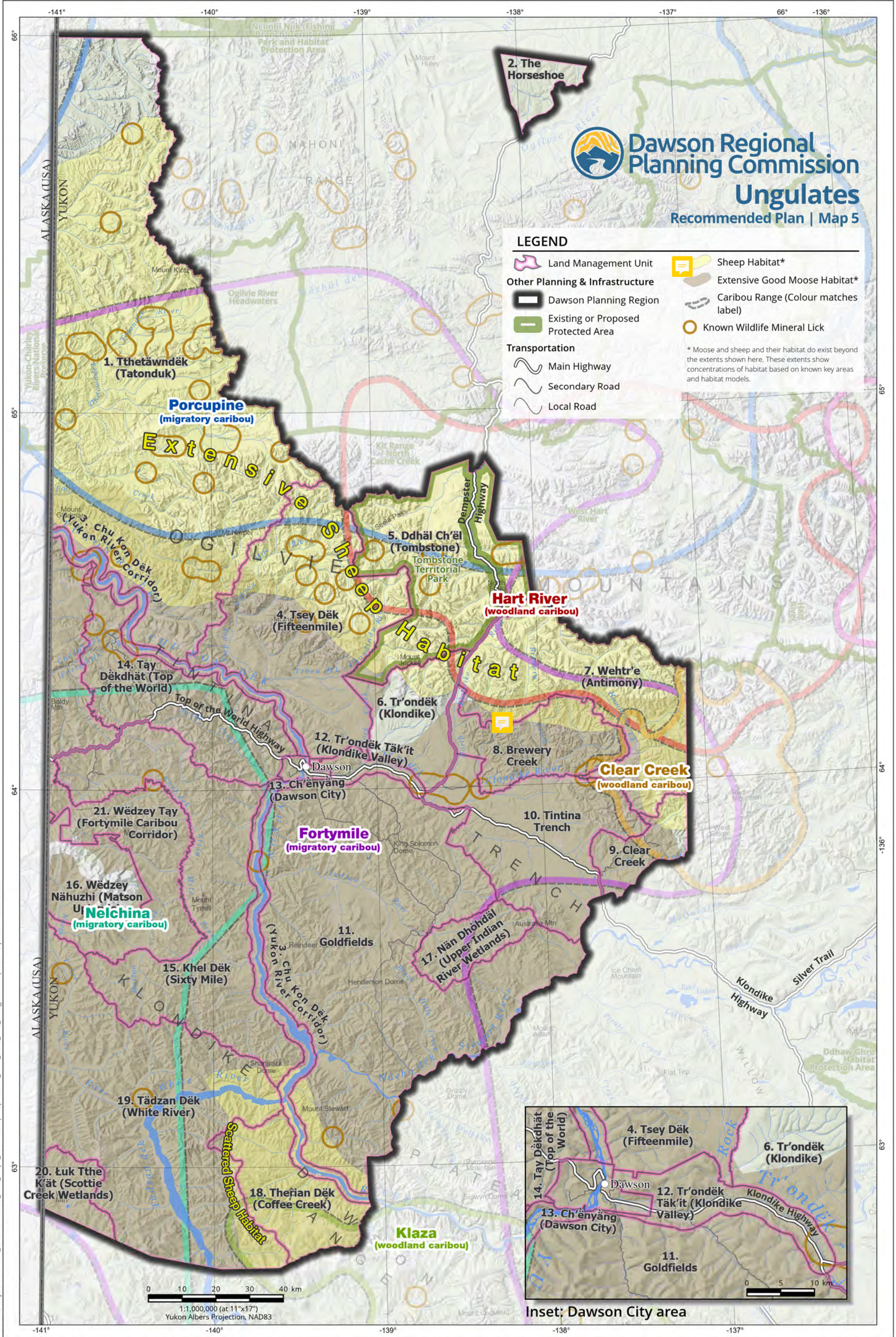
File & Layout: Dawson_Recommended_Plan_Maps_20211223 | Map01to08_LMU_Data_and_Designations | Date Exported: 2022-06-16

Data sources: Maps in this series includes base and thematic data provided by NRCan, GeoYukon (Yukon Government), Tr'ondëk Hwëch'in Government, US National Parks Service, Ducks Unlimited Canada, YLUPC, NYPC, or DRPC. **Data disclaimer:** This map is a graphical representation depicting the approximate size, configuration, and spatial relationship of geographic features. Some datasets have specific disclaimers available from the data provider. While great care has been taken to ensure the best possible quality, this document is neither intended for legal descriptions nor to calculate precise areas, dimensions, or distances. It is possible for errors, omissions, and inaccuracies occur in these data which is beyond our control. Wildlife Key Areas (WKA) are compiled by the Yukon Department of Environment WKA Inventory Program (2014 and 2019), against 1:250,000 NTDB from various data sources. Key Areas are based on observed locations of wildlife at key times of year, not on habitat assessment. With new information, boundaries and designations of Key Areas can change and additional Key Areas can be identified. Furthermore, Key Areas are not the only sites important for wildlife. Other information sources can identify other sites important for wildlife for reasons outside the scope of the WKA inventory program. Updates to Key Areas occur only periodically. For the most current information, please consult with the Regional Biologist for your area of interest. If you have questions or would like to contribute to the WKA database, please contact the WKA Inventory Program. Digital copies of this map may be obtained from the Dawson Regional Planning Commission and the Yukon Land Use Planning Council websites at: dawson.planyukon.ca and www.planyukon.ca



File & Layout: Dawson_Recommended_Plan_Maps_20211223 | Map01to08_LMU_Data_and_Designations | Date Exported: 2022-06-20

Data sources: Maps in this series includes base and thematic data provided by NRCan, GeoYukon (Yukon Government), Tr'ondëk Hwëch'in Government, US National Parks Service, Ducks Unlimited Canada, YLUPC, NYPC, or DRPC. **Data disclaimer:** This map is a graphical representation depicting the approximate size, configuration, and spatial relationship of geographic features. Some datasets have specific disclaimers available from the data provider. While great care has been taken to ensure the best possible quality, this document is neither intended for legal descriptions nor to calculate precise areas, dimensions, or distances. It is possible for errors, omissions, and inaccuracies occur in these data which is beyond our control. Wildlife Key Areas (WKA) are compiled by the Yukon Department of Environment WKA Inventory Program (2014 and 2019), against 1:250,000 NTDB from various data sources. Key Areas are based on observed locations of wildlife at key times of year, not on habitat assessment. With new information, boundaries and designations of Key Areas can change and additional Key Areas can be identified. Furthermore, Key Areas are not the only sites important for wildlife. Other information sources can identify other sites important for wildlife for reasons outside the scope of the WKA Inventory Program. Updates to Key Areas occur only periodically. For the most current information, please consult with the Regional Biologist for your area of interest. If you have questions or would like to contribute to the WKA database, please contact the WKA Inventory Program. Digital copies of this map may be obtained from the Dawson Regional Planning Commission and the Yukon Land Use Planning Council websites at: dawson.planyukon.ca and www.planyukon.ca



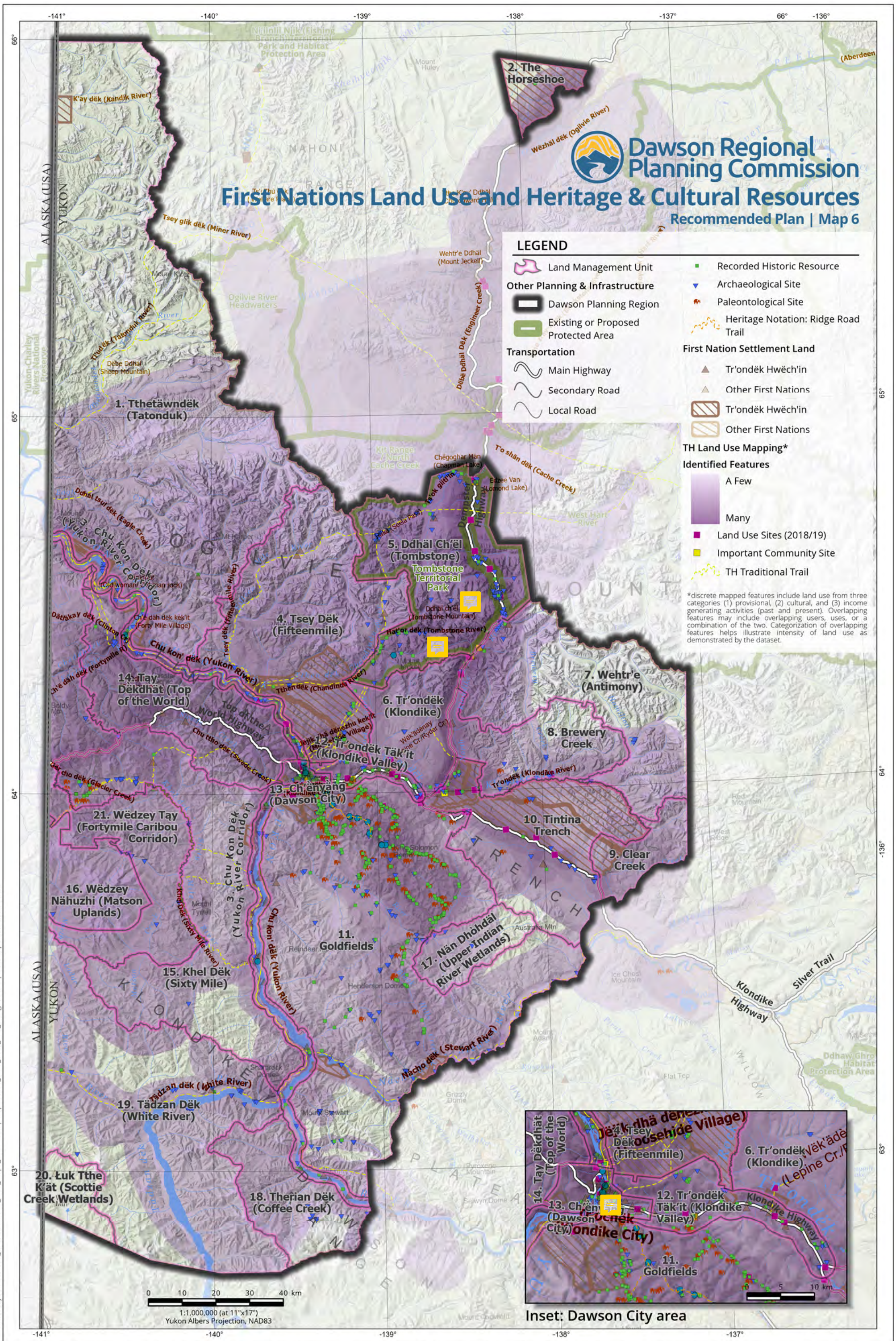
Dawson Regional Planning Commission
Ungulates
 Recommended Plan | Map 5

LEGEND

- Land Management Unit
- Sheep Habitat*
- Extensive Good Moose Habitat*
- Caribou Range (Colour matches label)
- Known Wildlife Mineral Lick
- Dawson Planning Region
- Existing or Proposed Protected Area
- * Moose and sheep and their habitat do exist beyond the extents shown here. These extents show concentrations of habitat based on known key areas and habitat models.
- Main Highway
- Secondary Road
- Local Road

File & Layout: Dawson_Recommended_Plan_Maps_20211223 | Map01to08_LMU_Data_and_Designations | Date Exported: 2022-06-23

Data sources: Maps in this series includes base and thematic data provided by NRCAN, GeoYukon (Yukon Government), Tr'ondëk Hwëch'in Government, US National Parks Service, Ducks Unlimited Canada, YLUPC, NYPC, or DRPC. **Data disclaimer:** This map is a graphical representation depicting the approximate size, configuration, and spatial relationship of geographic features. Some datasets have specific disclaimers available from the data provider. While great care has been taken to ensure the best possible quality, this document is neither intended for legal descriptions nor to calculate precise areas, dimensions, or distances. It is possible for errors, omissions, and inaccuracies occur in these data which is beyond our control. Wildlife Key Areas (WKA) are compiled by the Yukon Department of Environment WKA Inventory Program (2014 and 2019), against 1:250,000 NTDB from various data sources. Key Areas are based on observed locations of wildlife at key times of year, not on habitat assessment. With new information, boundaries and designations of Key Areas can change and additional Key Areas can be identified. Furthermore, Key Areas are not the only sites important for wildlife. Other information sources can identify other sites important for reasons outside the scope of the WKA Inventory Program. Updates to Key Areas occur only periodically. For the most current information, please consult with the Regional Biologist for your area of interest. If you have questions or would like to contribute to the WKA database, please contact the WKA Inventory Program. Digital copies of this map may be obtained from the Dawson Regional Planning Commission and the Yukon Land Use Planning Council websites at: dawson.planyukon.ca and www.planyukon.ca



First Nations Land Use and Heritage & Cultural Resources

Recommended Plan | Map 6



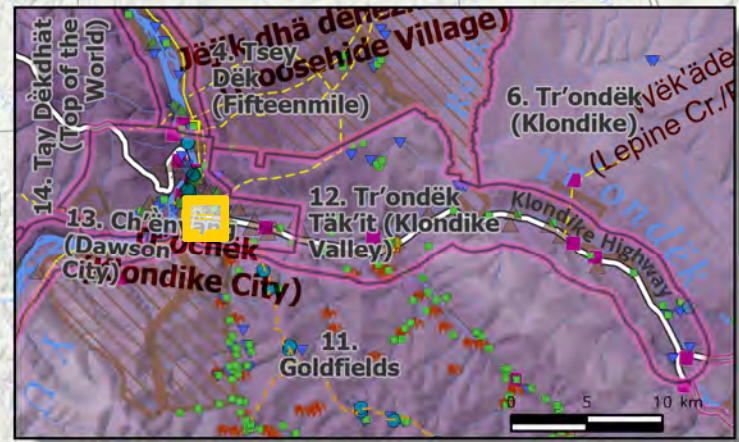
LEGEND

- Land Management Unit
- Dawson Planning Region
- Existing or Proposed Protected Area
- Main Highway
- Secondary Road
- Local Road
- Recorded Historic Resource
- ▼ Archaeological Site
- ▲ Paleontological Site
- Heritage Notation: Ridge Road Trail
- First Nation Settlement Land**
 - ▲ Tr'ondëk Hwëch'in
 - ▲ Other First Nations
 - Tr'ondëk Hwëch'in
 - Other First Nations
- TH Land Use Mapping***
- Identified Features**
 - A Few
 - Many
 - Land Use Sites (2018/19)
 - Important Community Site
 - TH Traditional Trail

*discrete mapped features include land use from three categories (1) provisional, (2) cultural, and (3) income generating activities (past and present). Overlapping features may include overlapping users, uses, or a combination of the two. Categorization of overlapping features helps illustrate intensity of land use as demonstrated by the dataset.

File & Layout: Dawson_Recommended_Plan_Maps_20211223 | Map01to08_LMU_Data_and_Designations | Date Exported: 2022-06-23

0 10 20 30 40 km
1:1,000,000 (at 11"x17")
Yukon Albers Projection, NAD83



Inset: Dawson City area

Data sources: Maps in this series includes base and thematic data provided by NRCAN, GeoYukon (Yukon Government), Tr'ondëk Hwëch'in Government, US National Parks Service, Ducks Unlimited Canada, YLUPC, NYPC, or DRPC. **Data disclaimer:** This map is a graphical representation depicting the approximate size, configuration, and spatial relationship of geographic features. Some datasets have specific disclaimers available from the data provider. While great care has been taken to ensure the best possible quality, this document is neither intended for legal descriptions nor to calculate precise areas, dimensions, or distances. It is possible for errors, omissions, and inaccuracies occur in these data which is beyond our control. Wildlife Key Areas (WKA) are compiled by the Yukon Department of Environment WKA Inventory Program (2014 and 2019), against 1:250,000 NTDB from various data sources. Key Areas are based on observed locations of wildlife at key times of year, not on habitat assessment. With new information, boundaries and designations of Key Areas can change and additional Key Areas can be identified. Furthermore, Key Areas are not the only sites important for wildlife. Other information sources can identify other sites important for wildlife for reasons outside the scope of the WKA inventory program. Updates to Key Areas occur only periodically. For the most current information, please consult with the Regional Biologist for your area of interest. If you have questions or would like to contribute to the WKA database, please contact the WKA Inventory Program. Digital copies of this map may be obtained from the Dawson Regional Planning Commission and the Yukon Land Use Planning Council websites at: dawson.planyukon.ca and www.planyukon.ca

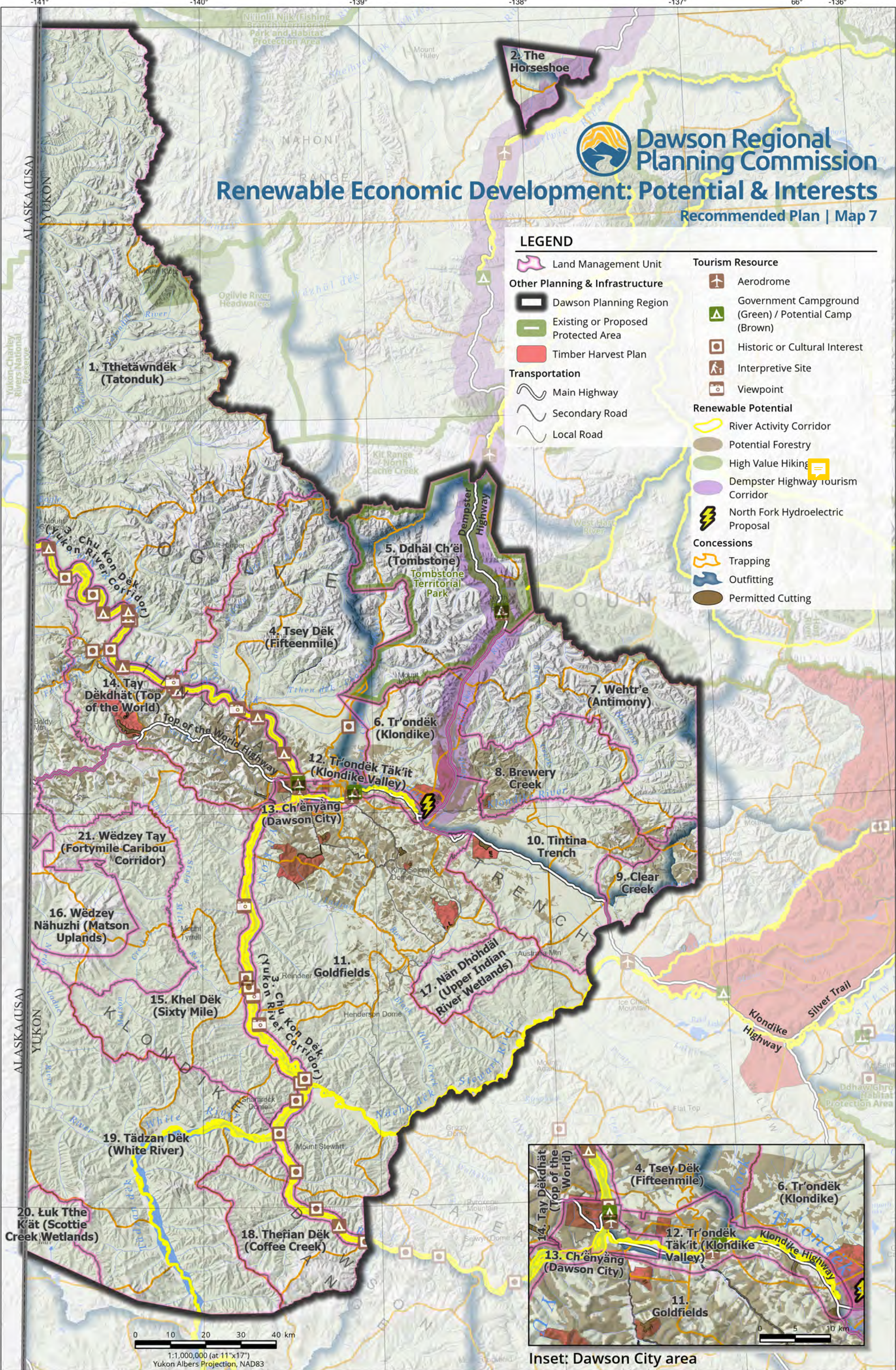
Dawson Regional Planning Commission

Renewable Economic Development: Potential & Interests

Recommended Plan | Map 7

LEGEND

- | | |
|-------------------------------------|--|
| Land Management Unit | Aerodrome |
| Dawson Planning Region | Government Campground (Green) / Potential Camp (Brown) |
| Existing or Proposed Protected Area | Historic or Cultural Interest |
| Timber Harvest Plan | Interpretive Site |
| Transportation | Viewpoint |
| Main Highway | Renewable Potential |
| Secondary Road | River Activity Corridor |
| Local Road | Potential Forestry |
| | High Value Hiking |
| | Dempster Highway tourism Corridor |
| | North Fork Hydroelectric Proposal |
| | Concessions |
| | Trapping |
| | Outfitting |
| | Permitted Cutting |



0 10 20 30 40 km
 1:1,000,000 (at 11"x17")
 Yukon Albers Projection, NAD83

File & Layout: Dawson_Recommended_Plan_Maps_20211223 | Map01to08_LMU_Data_and_Designations | Date Exported: 2022-06-23

Data sources: Maps in this series includes base and thematic data provided by NRCan, GeoYukon (Yukon Government), Tr'ondëk Hwëch'in Government, US National Parks Service, Ducks Unlimited Canada, YLUPC, NYPC, or DRPC. **Data disclaimer:** This map is a graphical representation depicting the approximate size, configuration, and spatial relationship of geographic features. Some datasets have specific disclaimers available from the data provider. While great care has been taken to ensure the best possible quality, this document is neither intended for legal descriptions nor to calculate precise areas, dimensions, or distances. It is possible for errors, omissions, and inaccuracies occur in these data which is beyond our control. Wildlife Key Areas (WKA) are compiled by the Yukon Department of Environment WKA Inventory Program (2014 and 2019), against 1:250,000 NTDB from various data sources. Key Areas are based on observed locations of wildlife at key times of year, not on habitat assessment. With new information, boundaries and designations of Key Areas can change and additional Key Areas can be identified. Furthermore, Key Areas are not the only sites important for wildlife. Other information sources can identify other sites important for wildlife for reasons outside the scope of the WKA inventory program. Updates to Key Areas occur only periodically. For the most current information, please consult with the Regional Biologist for your area of interest. If you have questions or would like to contribute to the WKA database, please contact the WKA Inventory Program. Digital copies of this map may be obtained from the Dawson Regional Planning Commission and the Yukon Land Use Planning Council websites at: dawson.planyukon.ca and www.planyukon.ca

Non-Renewable Economic Development: Potential & Interests

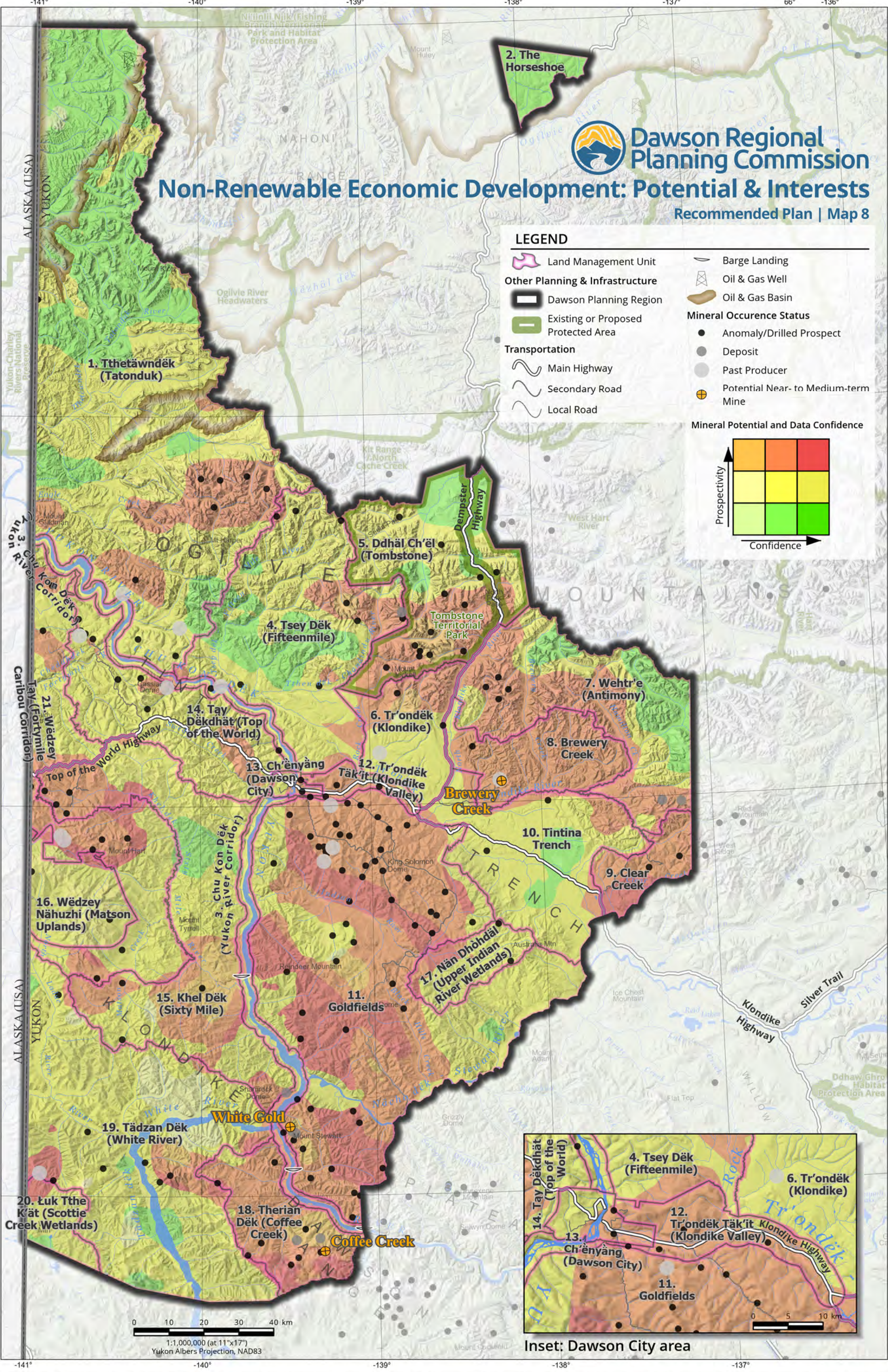
Recommended Plan | Map 8



LEGEND

- Land Management Unit
- Dawson Planning Region
- Existing or Proposed Protected Area
- Main Highway
- Secondary Road
- Local Road
- Barge Landing
- Oil & Gas Well
- Oil & Gas Basin
- Mineral Occurrence Status**
 - Anomaly/Drilled Prospect
 - Deposit
 - Past Producer
 - Potential Near- to Medium-term Mine
- Mineral Potential and Data Confidence**

Prospectivity ↑		Confidence →



Inset: Dawson City area

0 10 20 30 40 km
1:1,000,000 (at 11"x17")
Yukon Albers Projection, NAD83

File & Layout: Dawson_Recommended_Plan_Maps_20211223 | Map01to08_LMU_Data_and_Designations | Date Exported: 2022-06-23