

# Government of Yukon's Proposed Modifications to Landscape Management Unit Boundaries and Designations

Dawson Planning Region

Land Management Units

Parks and Protected Areas

### Land Designation

Integrated Stewardship Area 1

Integrated Stewardship Area 2

Integrated Stewardship Area 3

Integrated Stewardship Area 4

Tombstone Territorial Park

Special Management Area

Community Area

Sub-regional Planning Area

### First Nations Settlement Lands

Tr'ondëk Hwëch'in

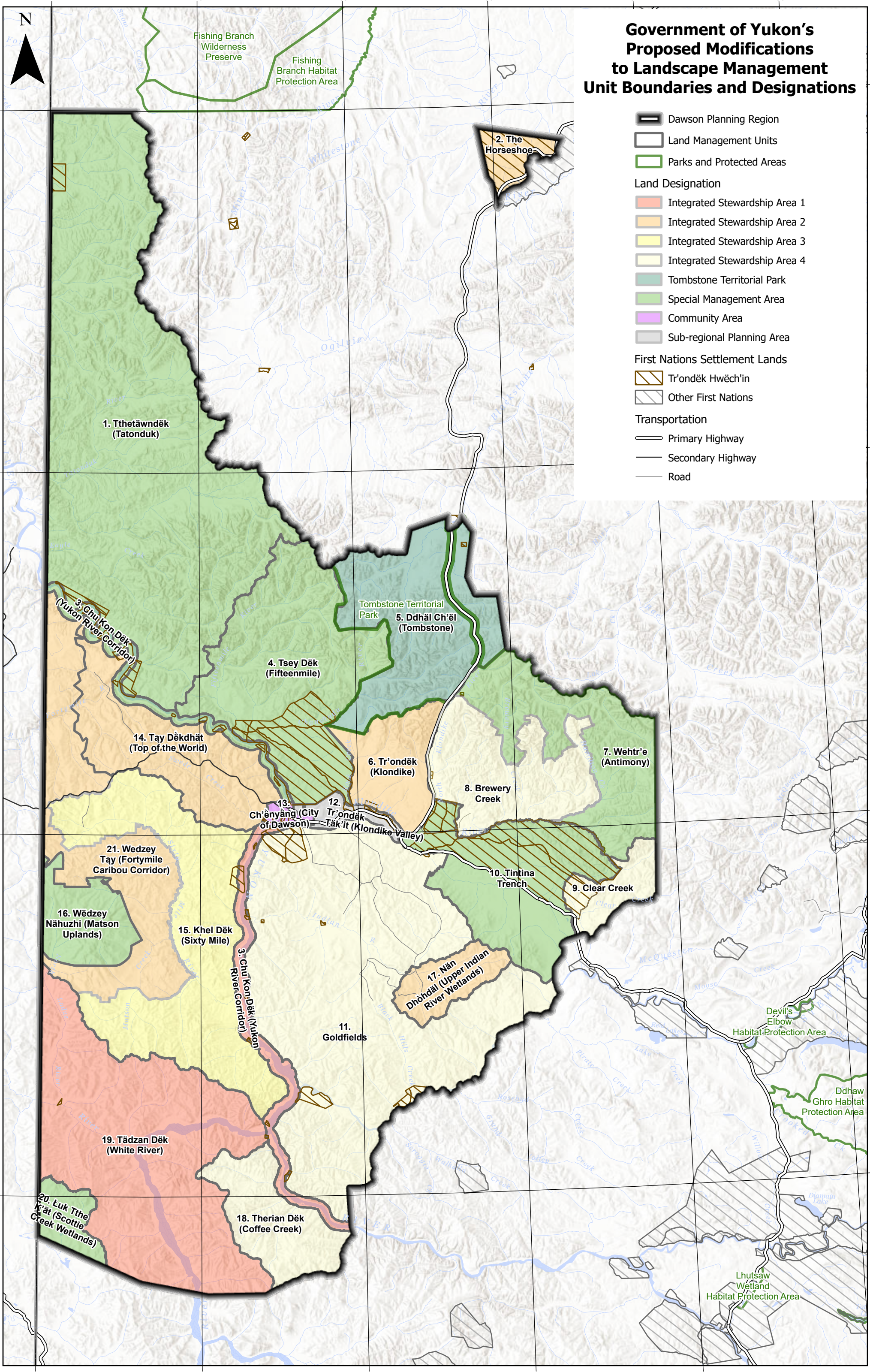
Other First Nations

### Transportation

Primary Highway

Secondary Highway

Road



1. Tthetäwändëk (Tatonduk)

2. The Horseshoe

5. Ddhäl Ch'ëi (Tombstone)

4. Tsey Dëk (Fifteenmile)

14. Tay Dëkdhät (Top of the World)

6. Tr'ondëk (Klondike)

7. Wehtr'e (Antimony)

8. Brewery Creek

13. Ch'ënyäng (City of Dawson)

12. Tr'ondëk Täk'it (Klondike Valley)

10. Tintina Trench

9. Clear Creek

21. Wedzey Tay (Fortymile Caribou Corridor)

16. Wëdzey Nähuzhi (Matson Uplands)

15. Khel Dëk (Sixty Mile)

17. Nän Dhöhdäl (Upper Indian River Wetlands)

11. Goldfields

19. Tädzan Dëk (White River)

20. Luk Tthe K'ät (Scottie Creek Wetlands)

18. Therian Dëk (Coffee Creek)