



About Klondike Active Trails and Transportation Society

- 9th Avenue Trail- including dog park loop
- Moose Mountain ski and walking trails and warming hut
- Discovery Trail in the Goldfields
- Hiking trails near Tombstone Interpretive Centre
- Ski lessons and events

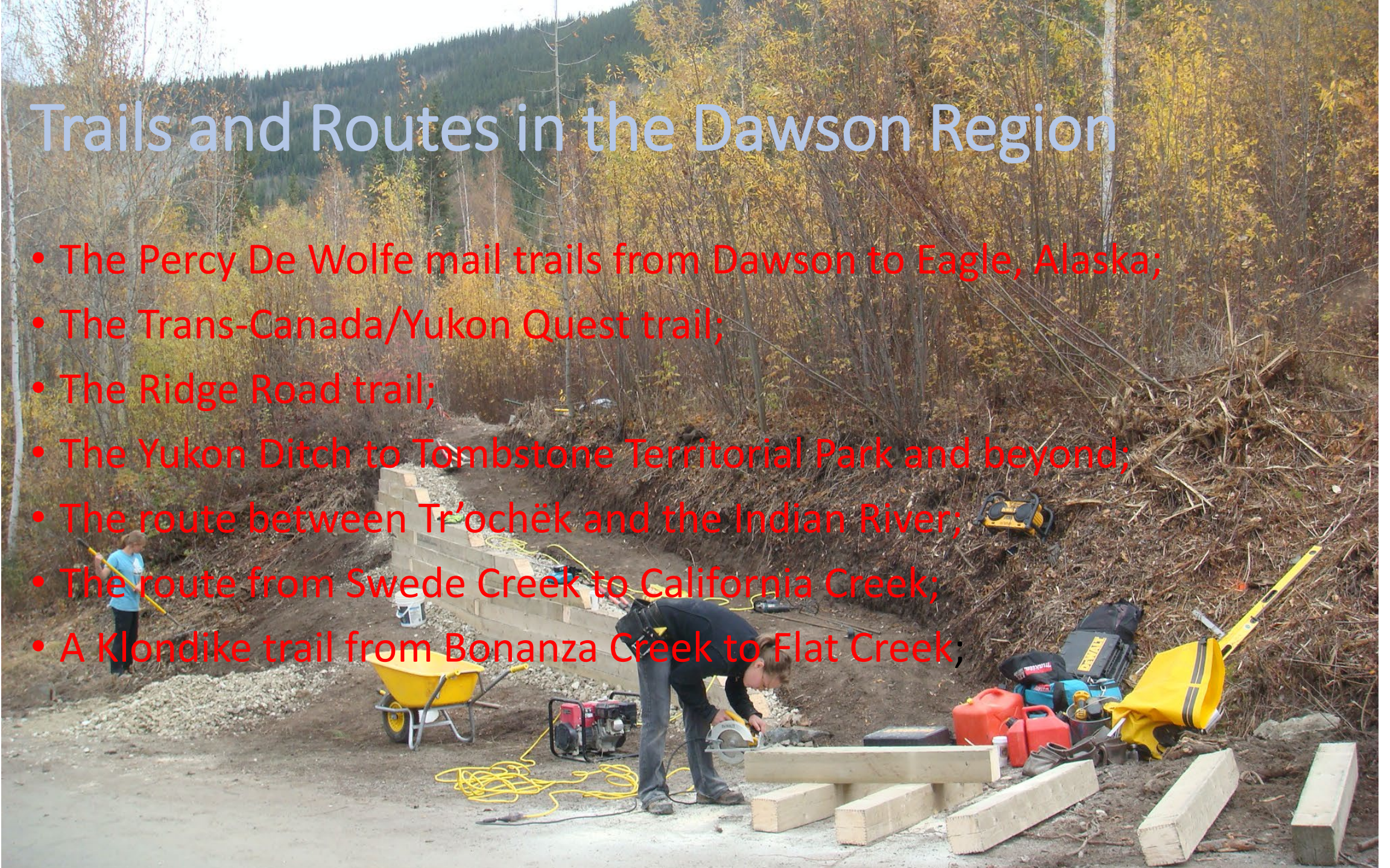


THE IMPORTANCE OF TRAILS TO THE CULTURAL LANDSCAPE

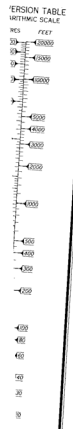
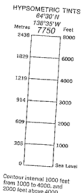


Trails and Routes in the Dawson Region

- The Percy De Wolfe mail trails from Dawson to Eagle, Alaska;
- The Trans-Canada/Yukon Quest trail;
- The Ridge Road trail;
- The Yukon Ditch to Tombstone Territorial Park and beyond;
- The route between Tr'ochëk and the Indian River;
- The route from Swede Creek to California Creek;
- A Klondike trail from Bonanza Creek to Flat Creek;



Heritage Routes in the Planning Region



CANADA LANDS SURVEYS RECORDS
8 3 7 8
JULY 16 1998

APPENDIX B Sheet 68
Map showing
TR'ONDEK HWÉCH'IN HERITAGE ROUTES (THHR),
pursuant to Schedule C to Chapter 13 of the
LAND CLAIM FINAL AGREEMENT
among
TR'ONDEK HWÉCH'IN,
HER MAJESTY THE QUEEN IN RIGHT OF CANADA, and
THE GOVERNMENT OF THE YUKON.
Maps agreed to on behalf of each
of the Parties 16 JULY, 1998.



KATTS Recommendation to DRLUPC

- Protect our trails and routes from industrial development;
- Ensure our trails and routes maintain their environmental and cultural integrity for future generations
- Ensure that non-motorized access is considered and planned for in future developments



THANK YOU!

