

Dawson Land Use Planning Commission

Exploring the socio-economic impacts of land withdrawals as a result of land use planning in the Yukon



YUKON CHAMBER OF MINES



Founded in 1943 - More than 500 members today including exploration, mining, service and supply companies, First Nation Development Corps, Orders of governments, contractors, and individuals, all with an interest in Yukon's mining industry

YCM advocates on behalf of industry to ensure the continuous development of a prosperous, responsible, modern Yukon mining industry



The Yukon mining industry is a major stakeholder in the Dawson Land Use Planning Region



Status	Count	Area (km ²)	Dawson PR Area (%)
Placer Claims			
Active	17882	1376.1	3.45%
Pending	685	57.8	0.14%
Total	18567.0	1433.9	3.60%
Placer Mining Land Use Permits			
Valid	294	1014.8	2.55%
Pending	3	30.5	0.08%
Total	297	1045.4	2.62%
Placer Leases			
Active Prospecting	80	149.7	0.38%
Pending Prospecting	25	43.9	0.11%
Active Dredging	3	3.8	0.01%
Total	80	149.7	0.38%
Quartz Claims			
Active	39466	7778.9	19.52%
Pending	3174	630.9	1.58%
Total	42640	8409.7	21.10%
Quartz Land Use Permits			
Valid	37	4697.0	11.79%
Pending	1	17.6	0.04%
Total	38	4714.6	11.83%
Quartz Prospecting Leases			
Active	93	14.1	0.04%
Total	93	14.1	0.04%

Facts:

- Over 25% of the Dawson Land Use Planning is currently staked by either hard rock or placer interests.
- First Nations are the largest mineral rights holders in Yukon
- UFA includes permanent mineral rights to nearly 24,000 km² (Cat. A)
- That's equivalent to nearly 124,000 mining claims

The erosion of land = the erosion of mineral investment competitiveness

Changing Realities:

- In 2015 mining was the largest private sector driver in the territory. 1 of every 6 jobs in the territory was in the mining sector. Contributions from mining were 13% of Yukon's GDP as of 2016.
- Canada and Yukon are losing their competitiveness on the global stage.

2017 Canada \$2.2B

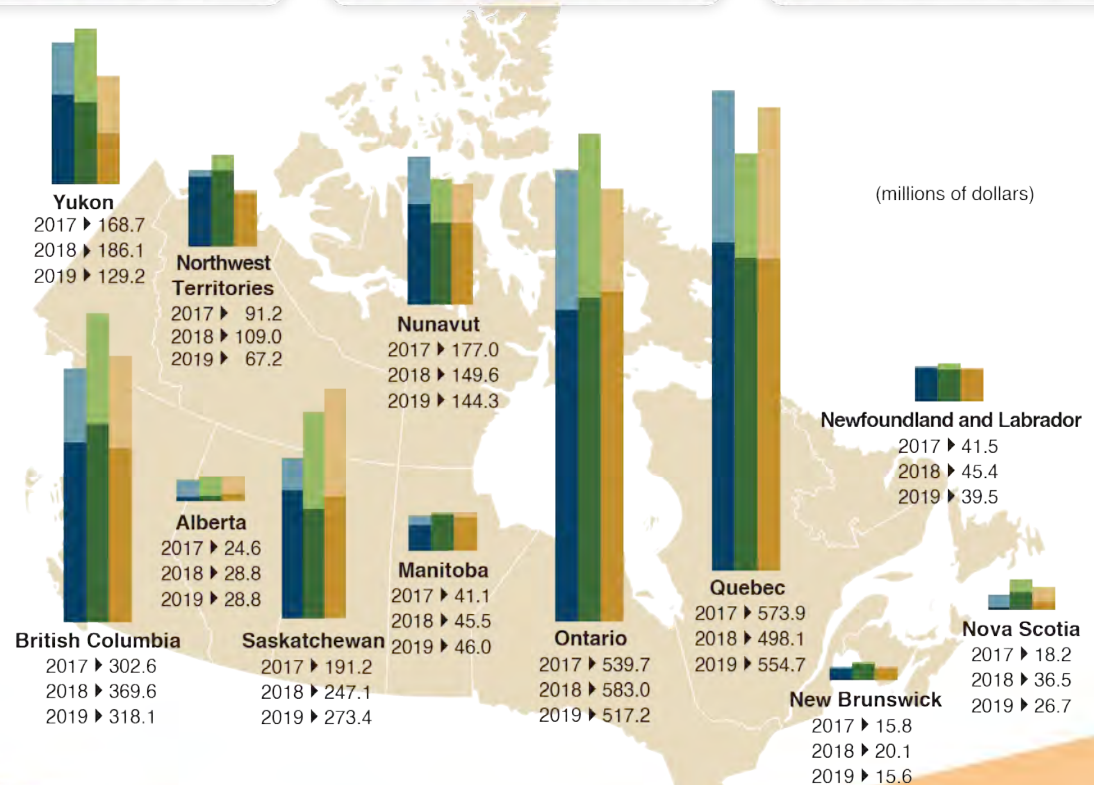
Exploration **\$1.5B**
Deposit appraisal **\$0.6B**

2018 (p) Canada \$2.3B

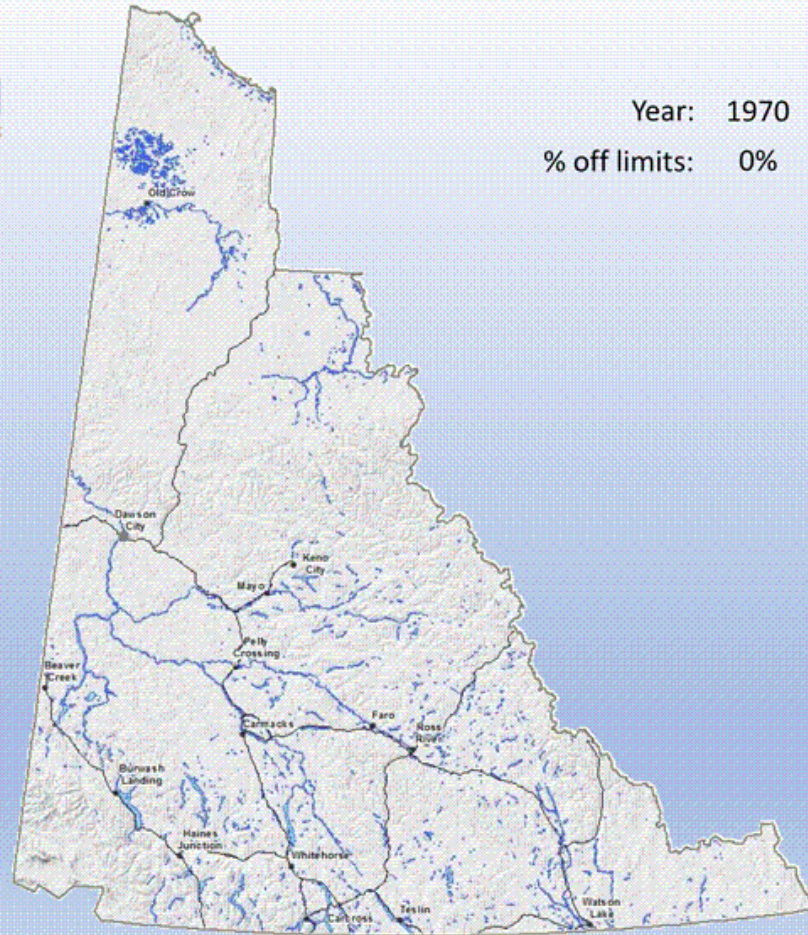
Exploration **\$1.5B**
Deposit appraisal **\$0.8B**

2019 (si) Canada \$2.2B

Exploration **\$1.5B**
Deposit appraisal **\$0.7B**



Yukon Land Withdrawals from Exploration and Mining.



Lands Withdrawn from Mineral Staking

Yukon Land Withdrawals from Exploration and Mining.

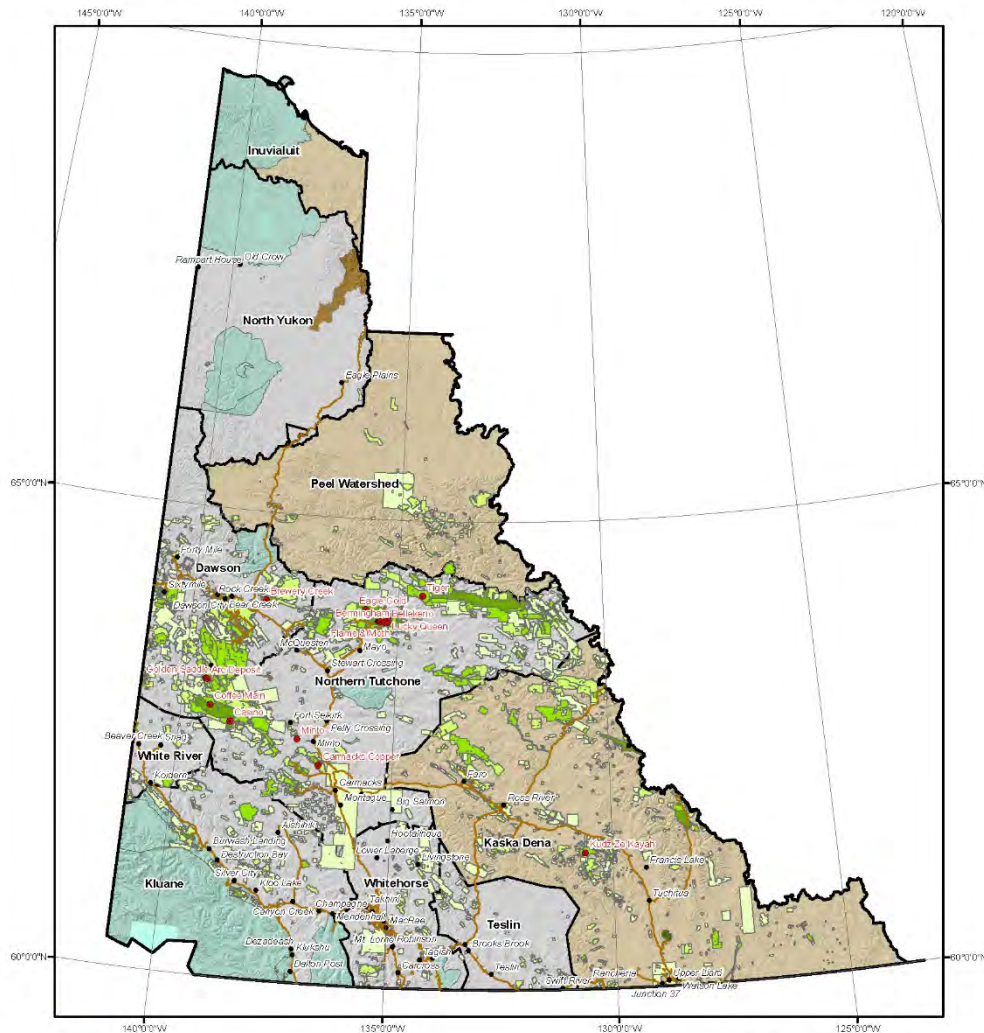


Lands Withdrawn from Mineral Staking

Map of Yukon showing quartz claims, mines, advanced projects, parks, protected and withdrawn areas, communities, and planning regions

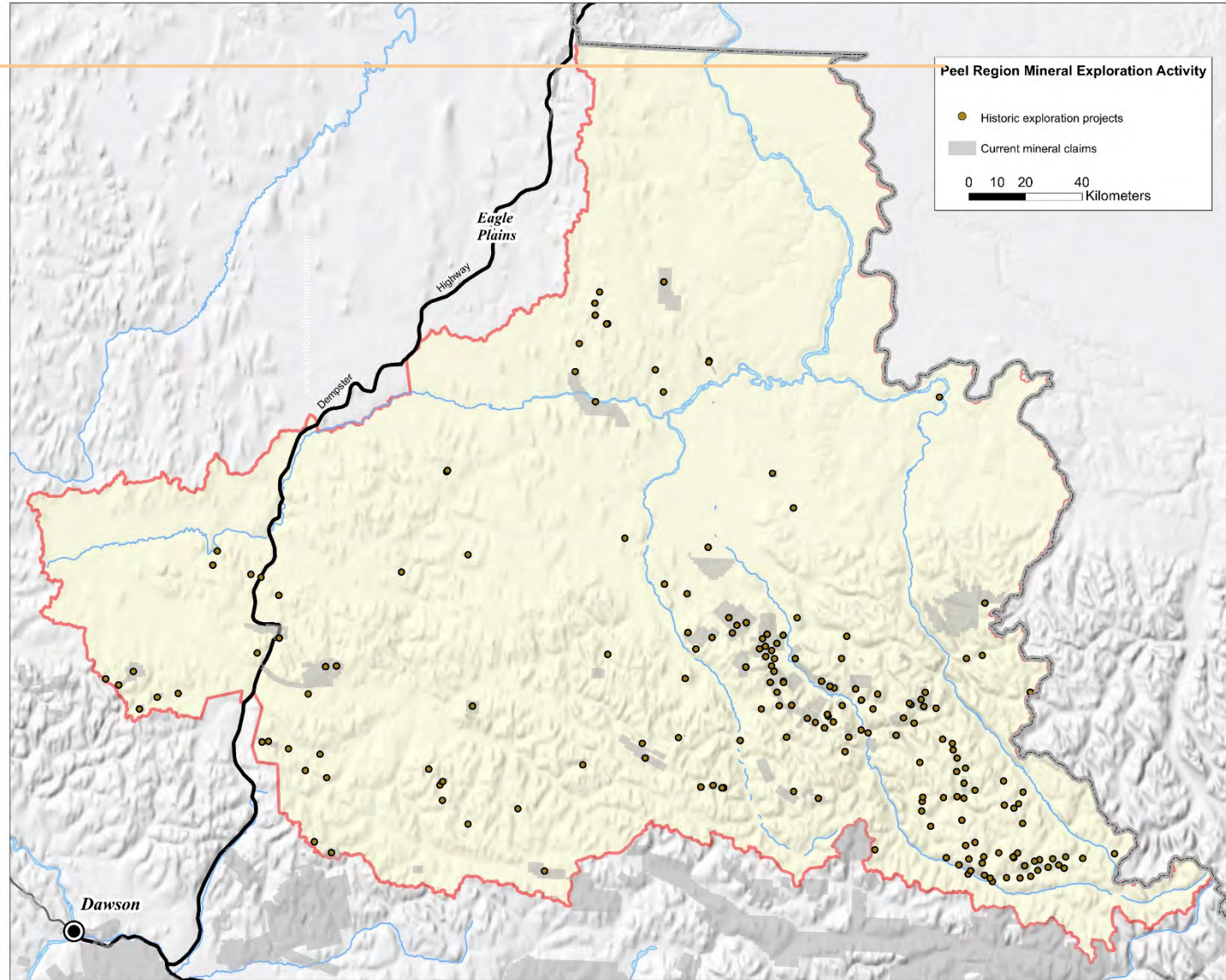


The plan should be adaptive:

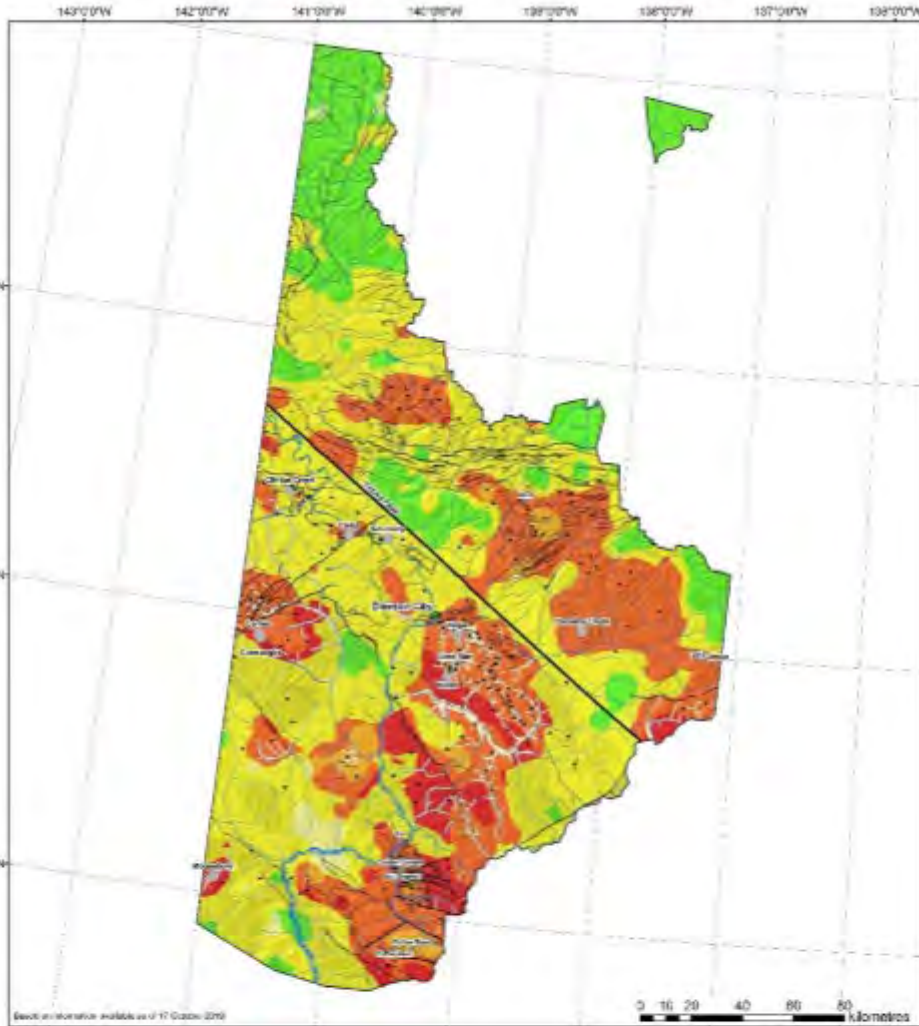


- | | | | | | |
|--|-----------------------|--|---------------------------|--|--------------------------|
| | Quartz claims Class 5 | | Land use planning regions | | Mines, advanced projects |
| | Quartz claims Class 4 | | Parks | | Towns, communities |
| | Quartz claims Class 3 | | Protected areas | | Roads |
| | Quartz claims Class 2 | | Withdrawn areas | | |
| | Quartz claims | | | | |
| | Claims historical | | | | |

Socio -Economic Outcomes Of the Peel Land Use Plan



Mineral Potential/*Confidence in Geology Mapping for the Dawson Region Land Use Planning Area

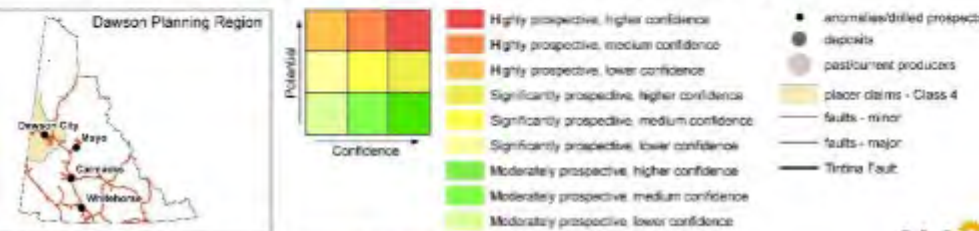


Solutions:

Make better and more collaborative land withdrawal decisions.

Consider the consequences of other jurisdictions who may have planned their land withdrawals better and the socio-economic outcomes of these actions.

Be reactive towards change and have a dynamic land planning approach.



Reflective of how much bedrock mapping has been done in an area.



Summary – Key Initiatives



- **What have we learned and how we can cooperatively improve:**
- Improve the Yukon Land Use Planning process with more of holistic approach to land withdrawals.
- Yukon mining industry offers a clear platform for Yukon indigenous economic potential.
- Without land available for exploration, access, and mining. None of the other industry concerns matter.
- Increased participation of Indigenous people can help close socio-economic gaps in the mining industry.

YUKON CHAMBER OF MINES

3151B 3rd Avenue Whitehorse, Yukon



CONTACT US:

Trish Hume, policy analyst

policyanalyst@yukonminers.ca



Yukon Chamber of Mines

Board of Directors:

- Ed Peart, *President*
- Chris Cormier, *1st VP, Goldcorp*
- Andrew Carne, *2nd VP, Archer Cathro*
- Mike Burke, *Past President*
- Al Doherty, *Aurum Geological Consulting*
- Sue Craig, *Tintina Consulting*
- Colin Asselstine, *Outcrop*
- Allan Nixon, *BMC Minerals*
- Lorelee Johnstone, *Coeur Silvertip*
- Grant Allan, *Prospects North*

Staff:

- Samson Hartland, *Executive Director*
- Daniel Little, *Communications*