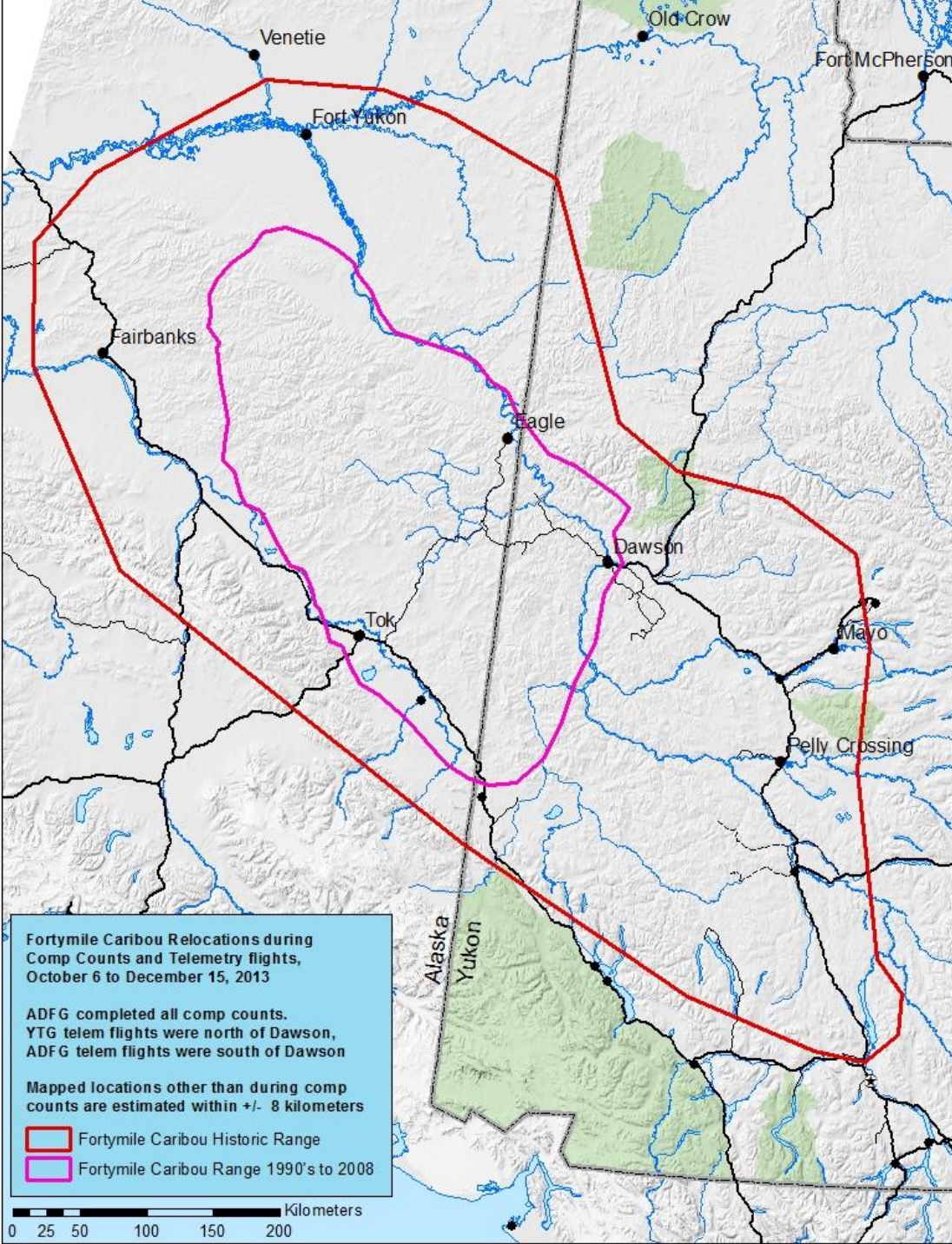


Fortymile Caribou Herd



Mike Suitor
Regional Biologist, North Yukon
Fish and Wildlife, Environment Yukon

Presentation for Dawson LUP Commission
March 20, 2014

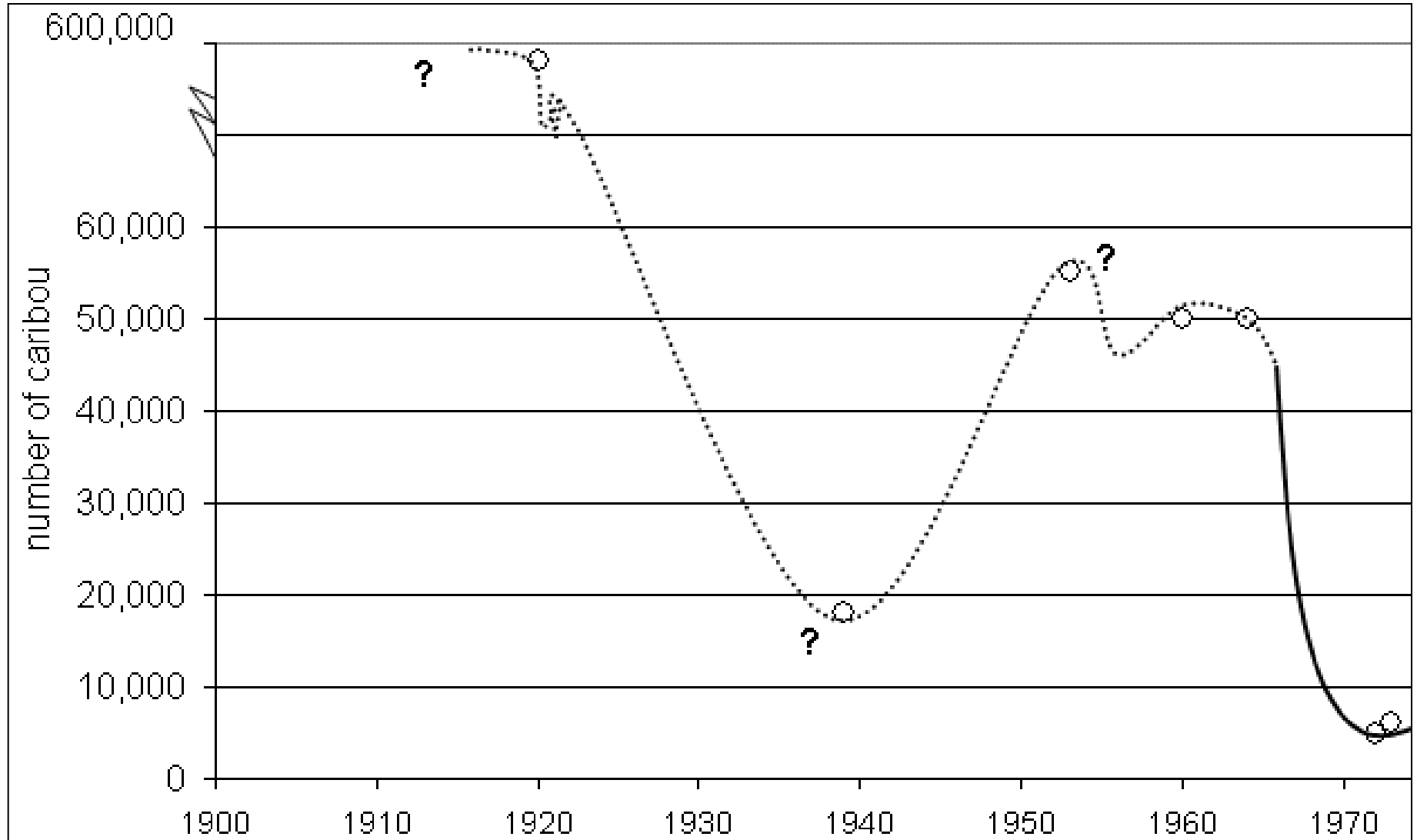


Historic Fortymile Range in Red and Current (to summer 2013) in pink

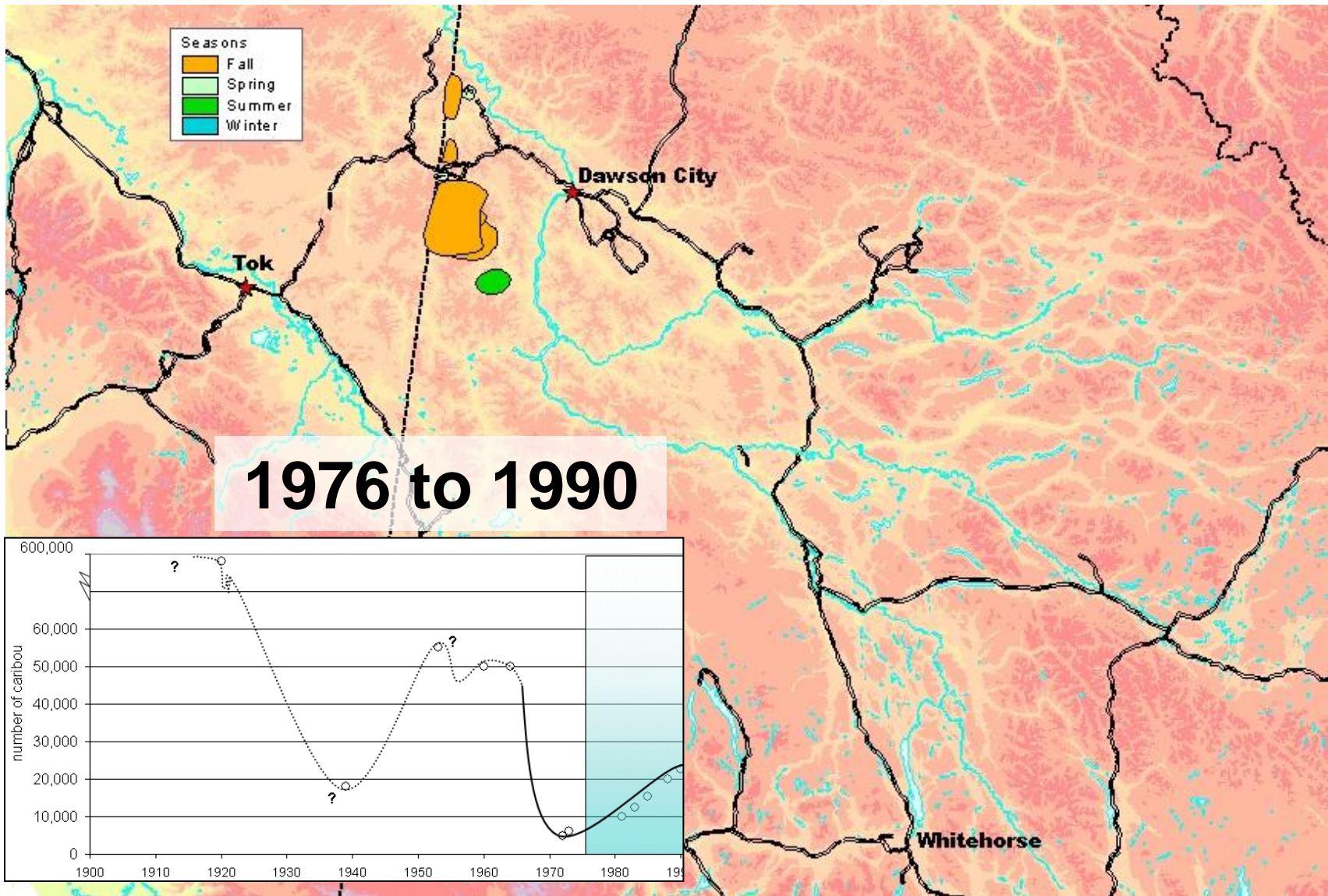
Historic based on Traditional / local knowledge acquired from 1920-2004

After this past fall and winter the current range will need to be expanded to incorporate the large expansion we'll discuss later on

Historical Population Trend



Distribution in Yukon and Population Trend



International Recovery Planning 1994-95

Objective: Restore FMCH to historic range

- Population = 22,558 (1994)
- Initiated by communities in YT/AK
- FMCH Management Plan 1995

AK Harvest Management 2001

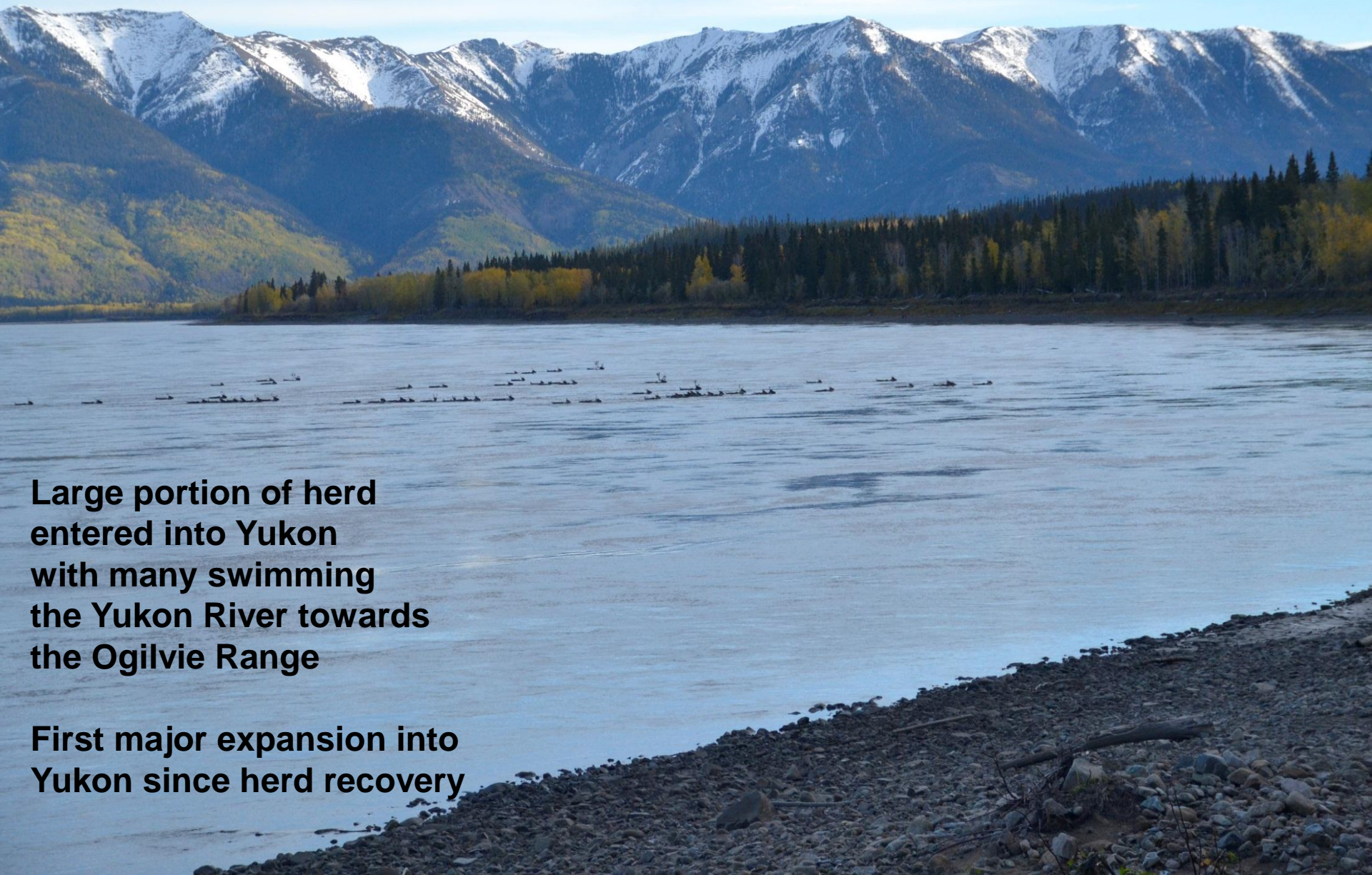
- 1999 = 34,640
- Negotiation of harvest including YT
 - Conservative harvest plan: <3%
 - 65/35 (AK/YT) split
 - Focused on bull harvest
 - Highly managed for all users

To date YG and TH have placed allocation into continued recovery of this herd

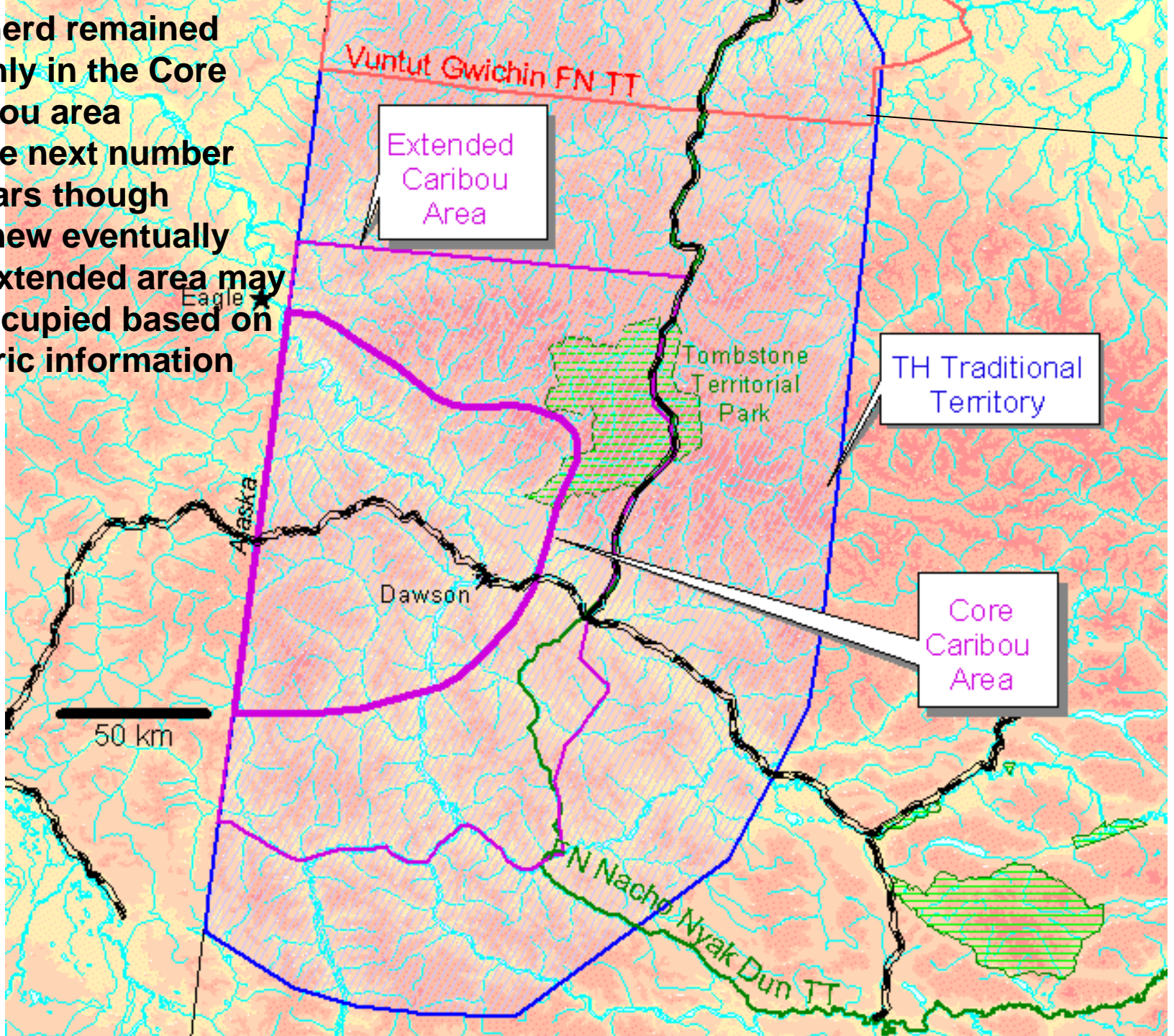
The First YT Milepost 2002

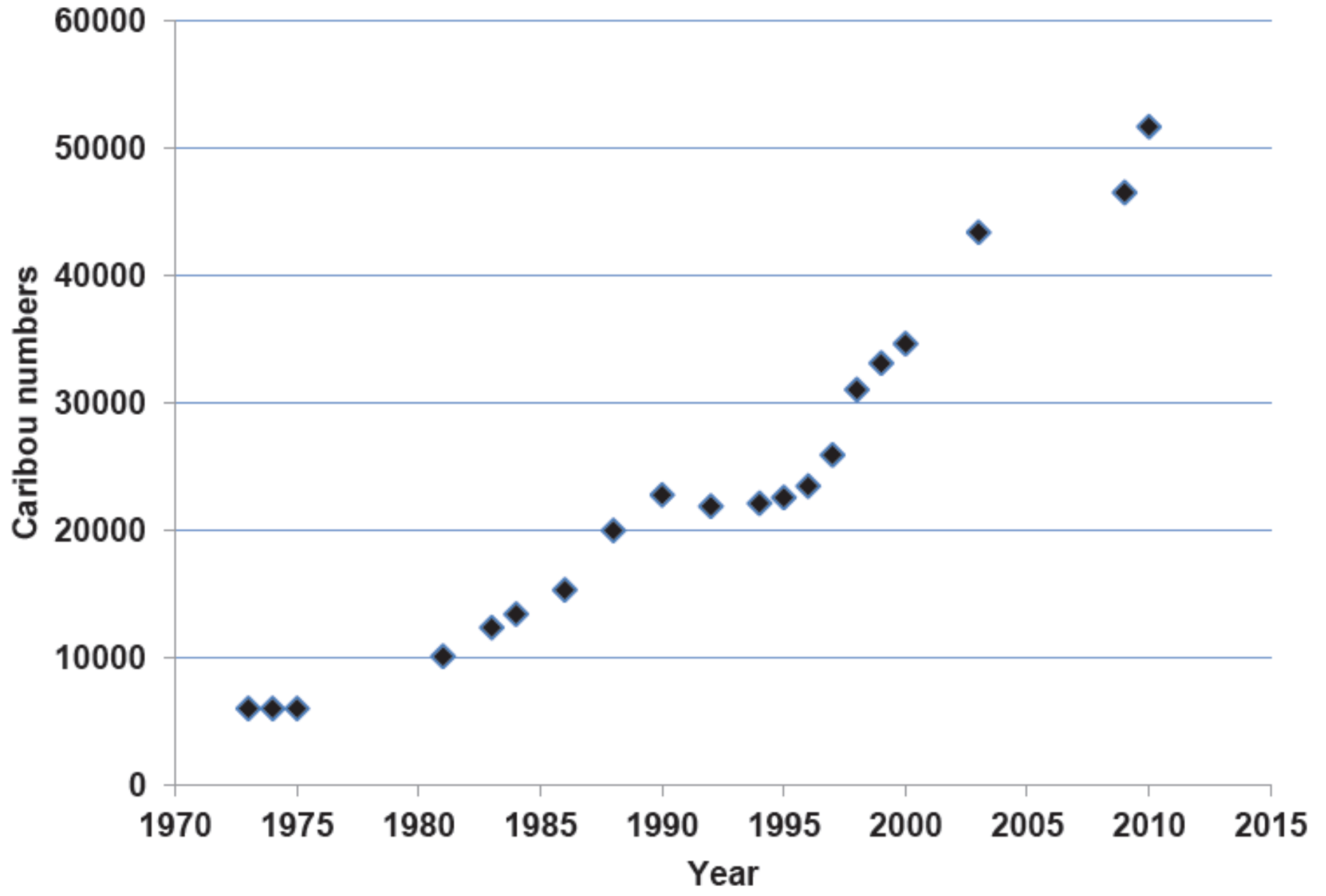
**Large portion of herd
entered into Yukon
with many swimming
the Yukon River towards
the Ogilvie Range**

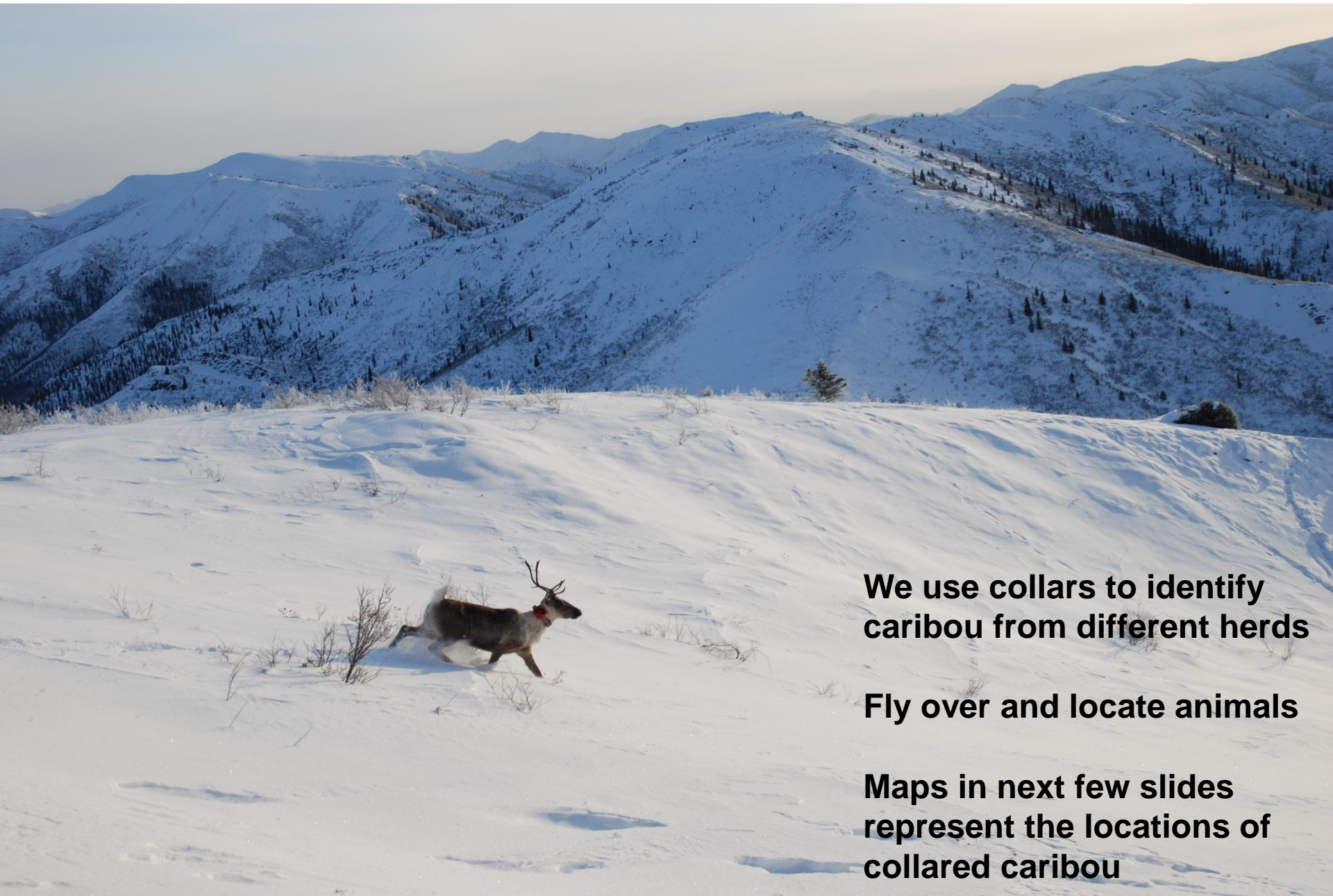
**First major expansion into
Yukon since herd recovery**



The herd remained roughly in the Core Caribou area for the next number of years though we knew eventually the Extended area may be occupied based on historic information







We use collars to identify caribou from different herds

Fly over and locate animals

Maps in next few slides represent the locations of collared caribou

Milepost 2: Fall of 2013 (Pop~ 50K)

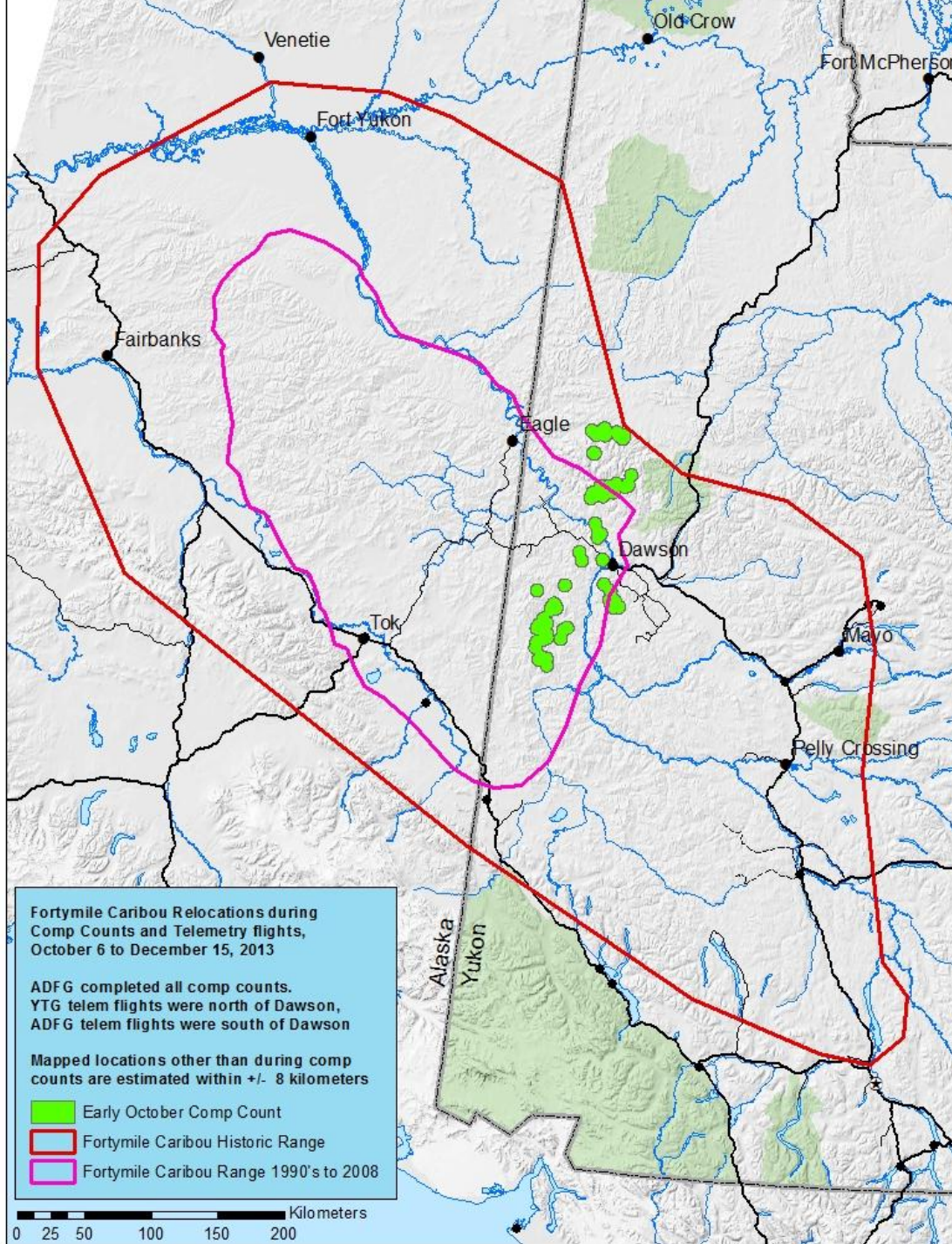


Caribou cross from the South Tatonduk to the Ogilvie – early October 2013

October 4-10, 2013

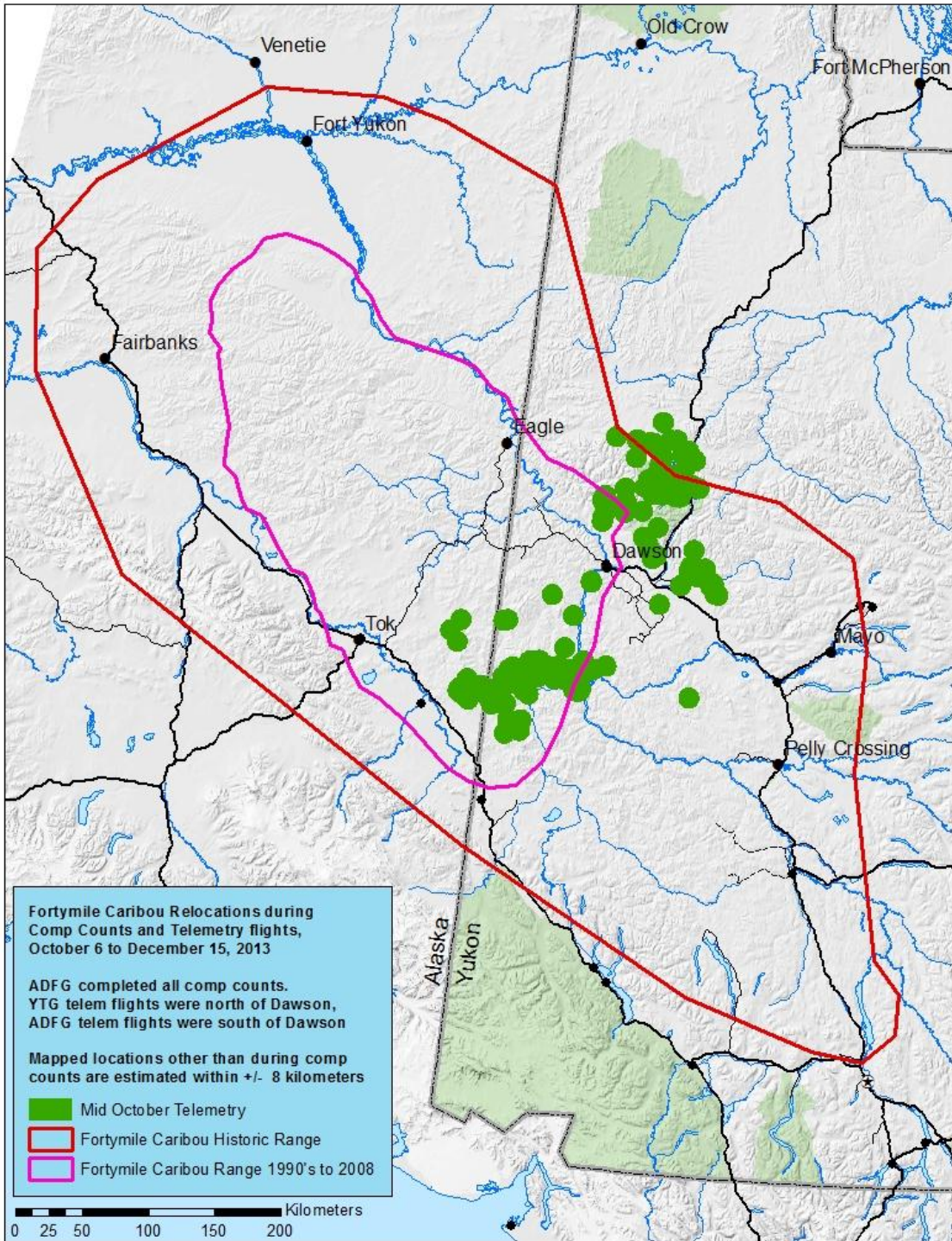
- Each dot is a collared caribou from the Fortymile herd

-Each caribou is only represented once



~October 15, 2013

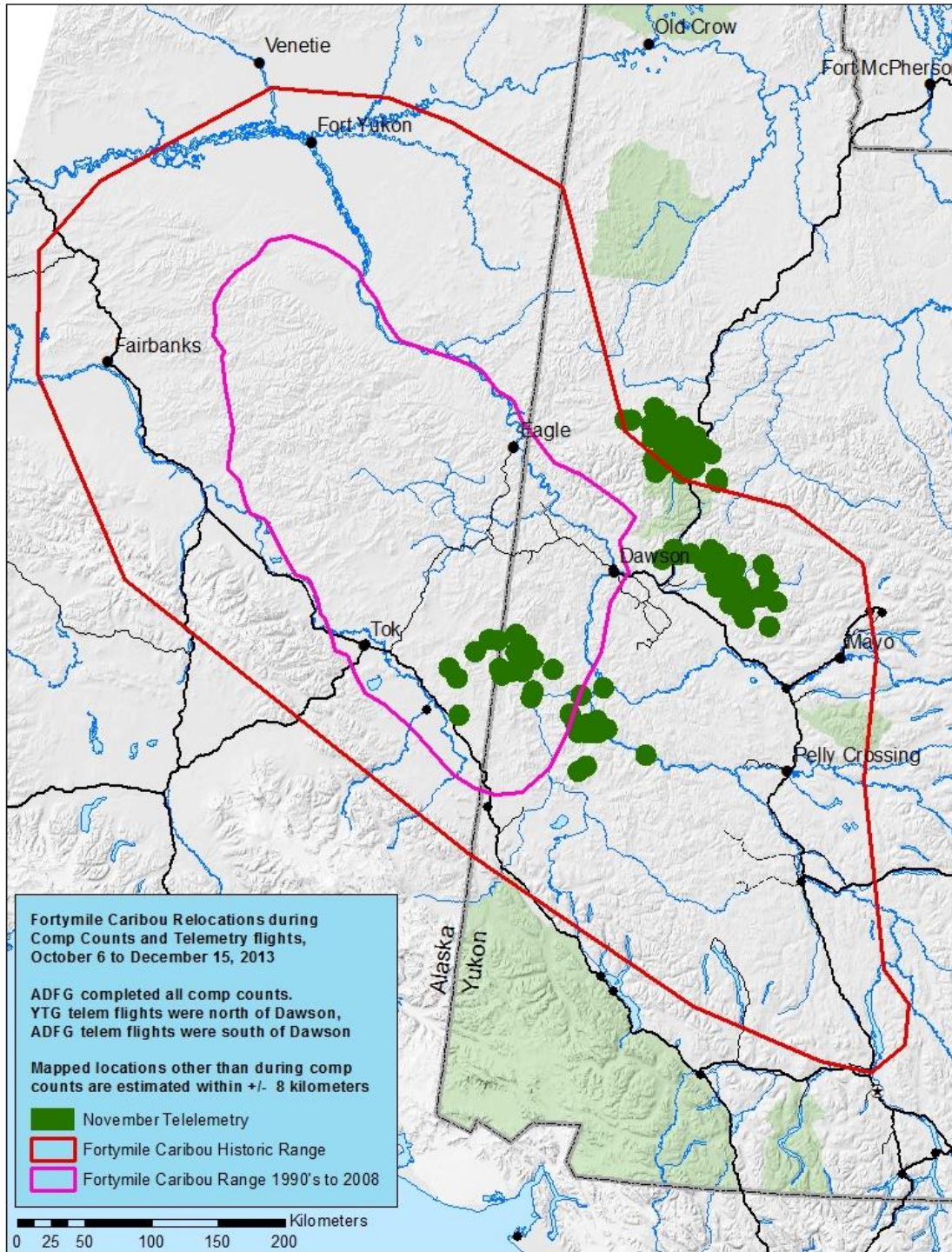
Fortymile caribou Move further into Yukon



**~October 30, 2013
Fortymile caribou in
northern portion of Yukon
move NE still. Caribou
along Blackstone Uplands
remain there**

**A large group cross the
Dempster and pass
through the Brewery Cr
site continuing east; a
few of weeks later
some of these head back
west to the Chandindu/
Fifteen Mile, others stay**

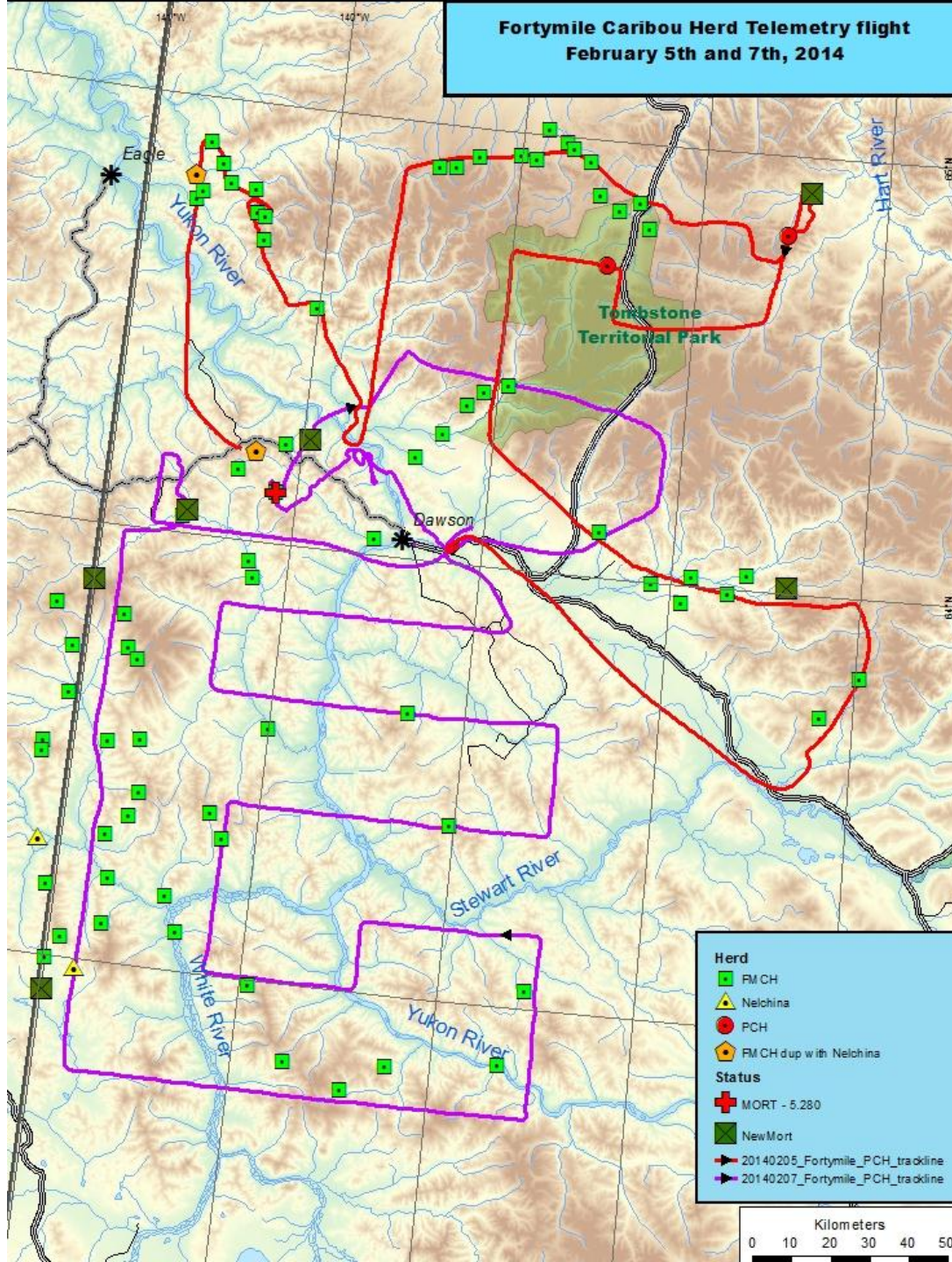
**Caribou to the south cross
the White River and Yukon
with some turning back
west (before returning in
November) and others to
the south.**



Blackstone Uplands – mid-October 2013



**Fortymile Caribou Herd Telemetry flight
February 5th and 7th, 2014**



February 2014

Fortymile caribou largely remain where they were in late October/early November (bright green squares while lines are flight Paths).

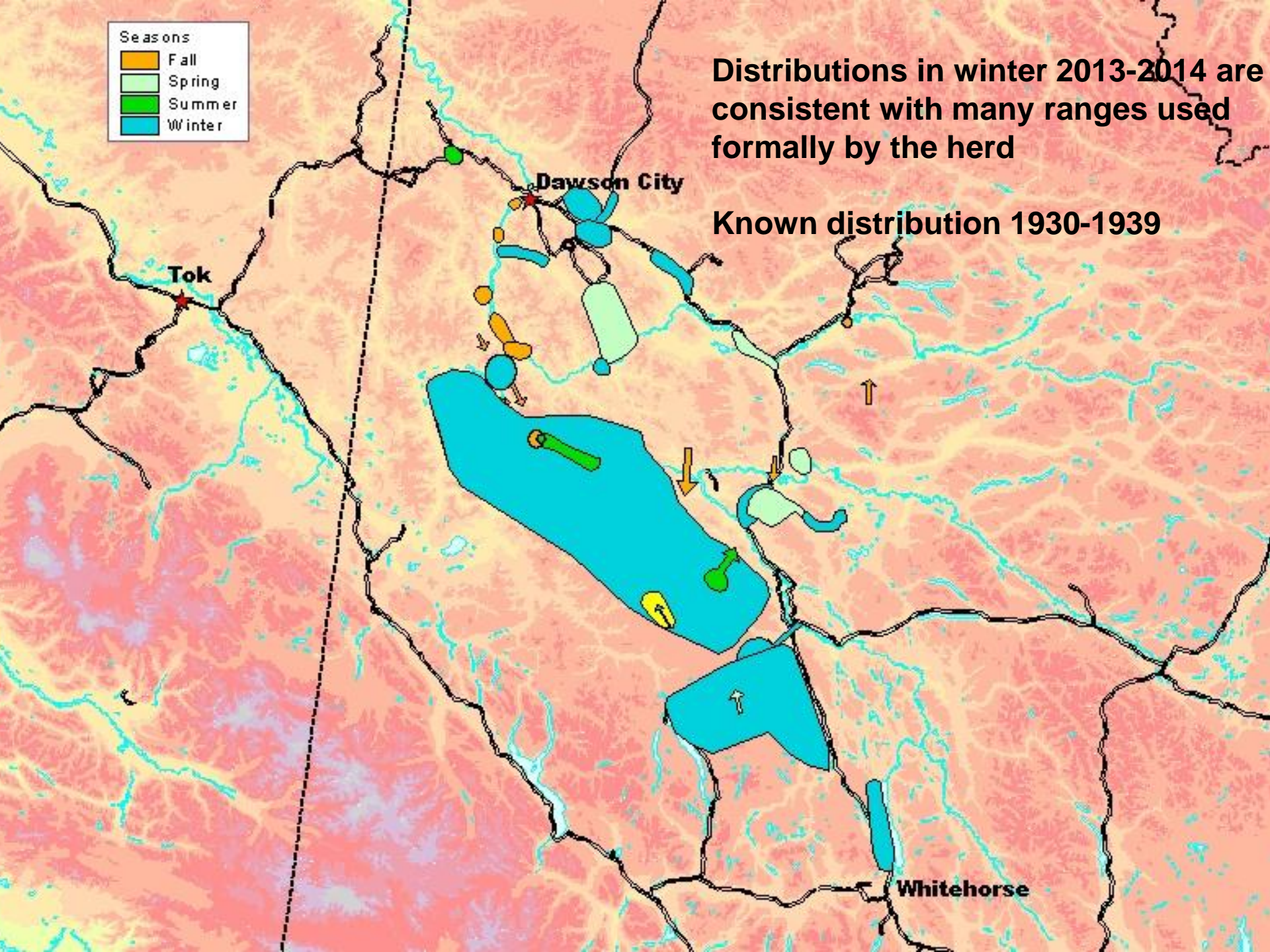
Areas of concentration include the the Blackstone Uplands/Cache Creek area, South Tatonduk, upper South Klondike, Sixty Mile/Matsen/Ladue area, north end of the Dawson Range and between Mt. Stewart and Selwyn Dome.

Work in mid-March found most of these had not moved or were just starting to shift west

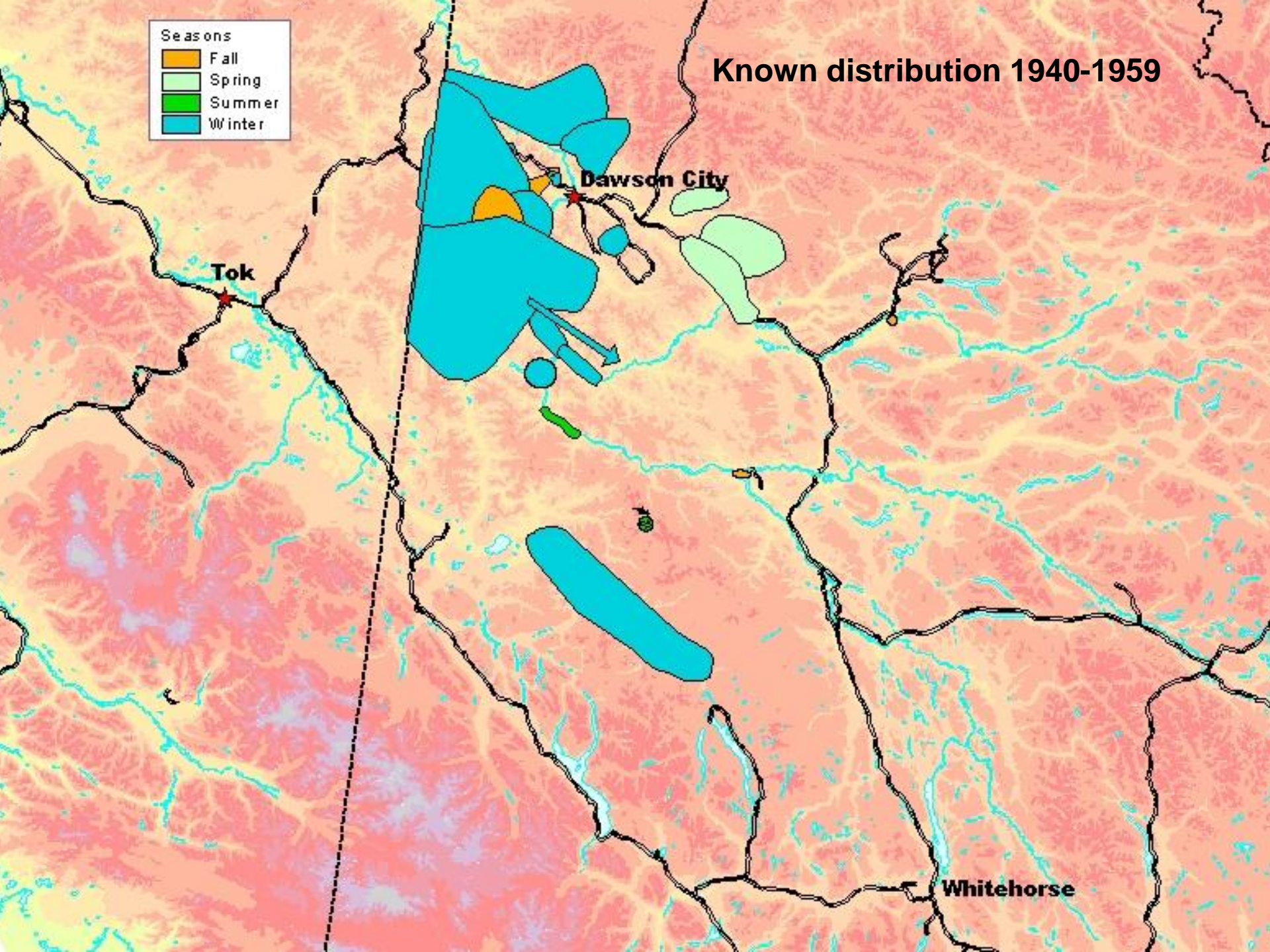
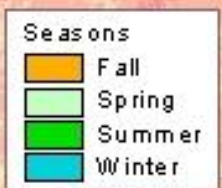


Distributions in winter 2013-2014 are consistent with many ranges used formally by the herd

Known distribution 1930-1939



Known distribution 1940-1959



Dawson City

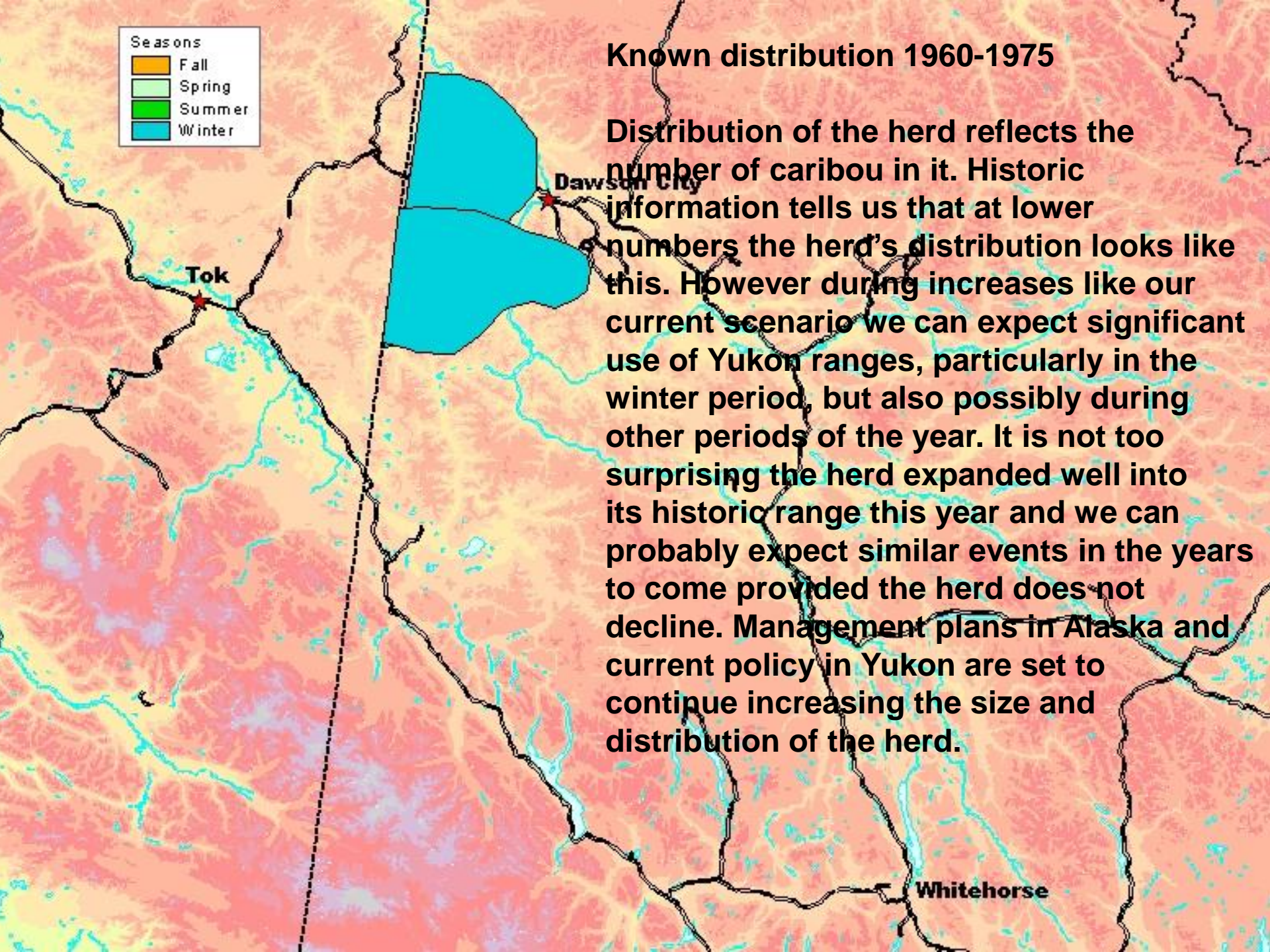
Tok

Whitehorse



Known distribution 1960-1975

Distribution of the herd reflects the number of caribou in it. Historic information tells us that at lower numbers the herd's distribution looks like this. However during increases like our current scenario we can expect significant use of Yukon ranges, particularly in the winter period, but also possibly during other periods of the year. It is not too surprising the herd expanded well into its historic range this year and we can probably expect similar events in the years to come provided the herd does not decline. Management plans in Alaska and current policy in Yukon are set to continue increasing the size and distribution of the herd.



Questions?



**Contact: Mike Suitor
Regional Biologist
North Yukon Region
Fish and Wildlife
Environment Yukon
(867) 993-6461
mike.suitor@gov.yk.ca**