

© Dawson Regional Planning Commission, August 2019

**Data sources:**

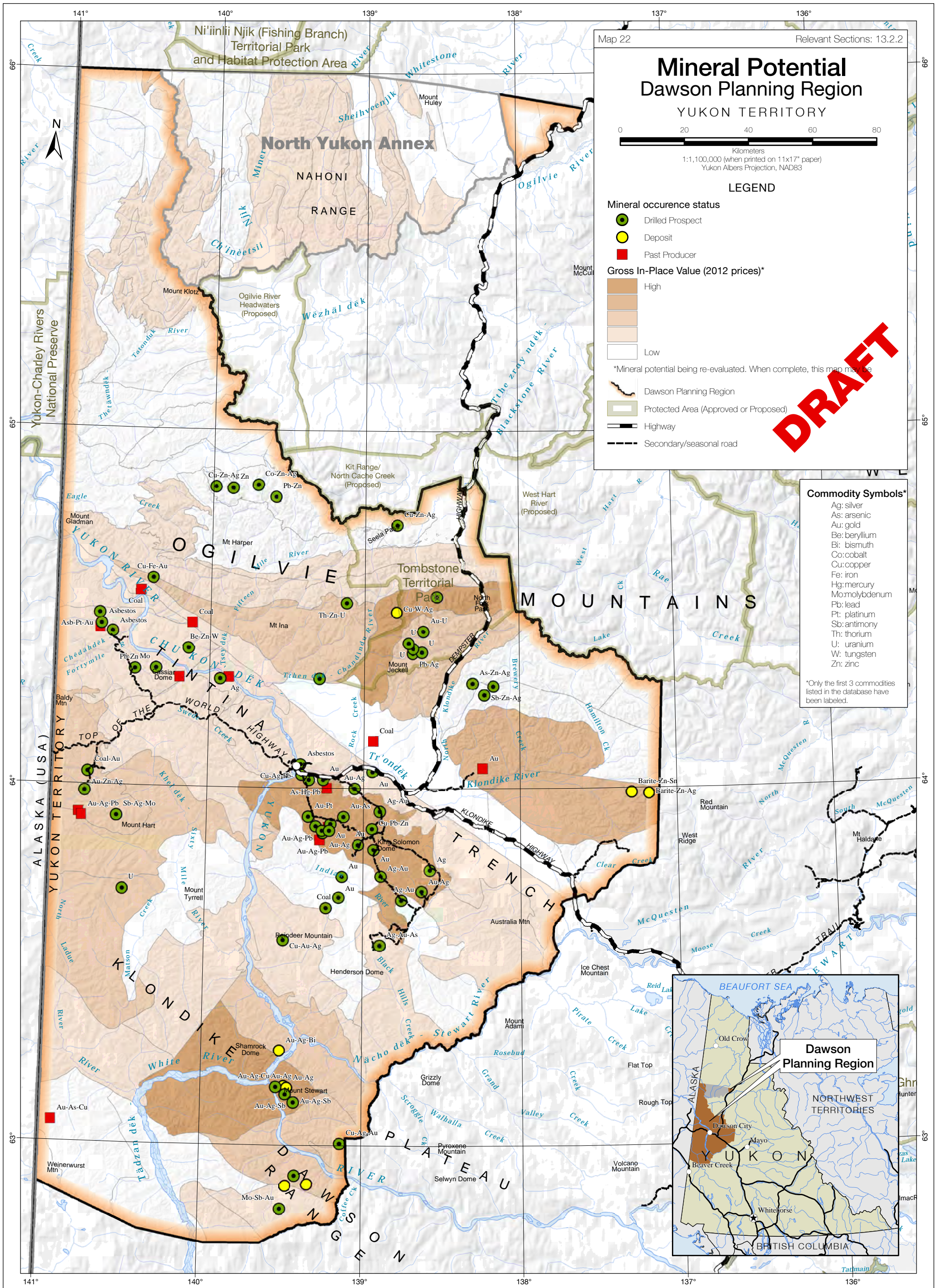
**Base data:** Transportation, watercourses and toponomy, shaded relief (GeoYukon); parks/protected areas (GeoYukon, YLUPC, US National Parks Service); provincial boundaries (Department of Natural Resources Canada), toponomy (recompiled by YLUPC from Tr'ondëk Hwëch'in and Yukon Government)

**Thematic data:** Fish habitat for Yukon drainages, 2012 (Yukon Placer Secretariate), Fish habitat for Porcupine drainages 2004 (Environmental Dynamics Inc for the North Yukon Planning Commission)

**Data disclaimer:**

This map is a graphical representation, which depicts the approximate size, configuration and spatial relationship of known geographic features. While great care has been taken to ensure the best possible quality, this document is not intended for legal descriptions and/or to calculate precise areas, dimensions or distances. We do not accept any responsibility for errors, omissions or inaccuracies in this data.

Digital copies of this map may be obtained from the Dawson Regional Planning Commission and the Yukon Land Use Planning Council websites at: [dawson.planyukon.ca](http://dawson.planyukon.ca) and [www.planyukon.ca](http://www.planyukon.ca)



**Data sources:**

**Base data:** Transportation, watercourses and toponomy, shaded relief (GeoYukon); parks/protected areas (GeoYukon, YLUPC, US National Parks Service); provincial boundaries (Department of Natural Resources Canada), toponomy (recompiled by YLUPC from Tr'ondëk Hwëch'in and Yukon Government)

**Thematic data:** Mineral potential: Gross in-place value, 2012 (Kilby, W.E. for Yukon Government - using the "unBiased" attribute, classed using equal intervals), Mineral Occurrences, 2019 (Yukon Government)

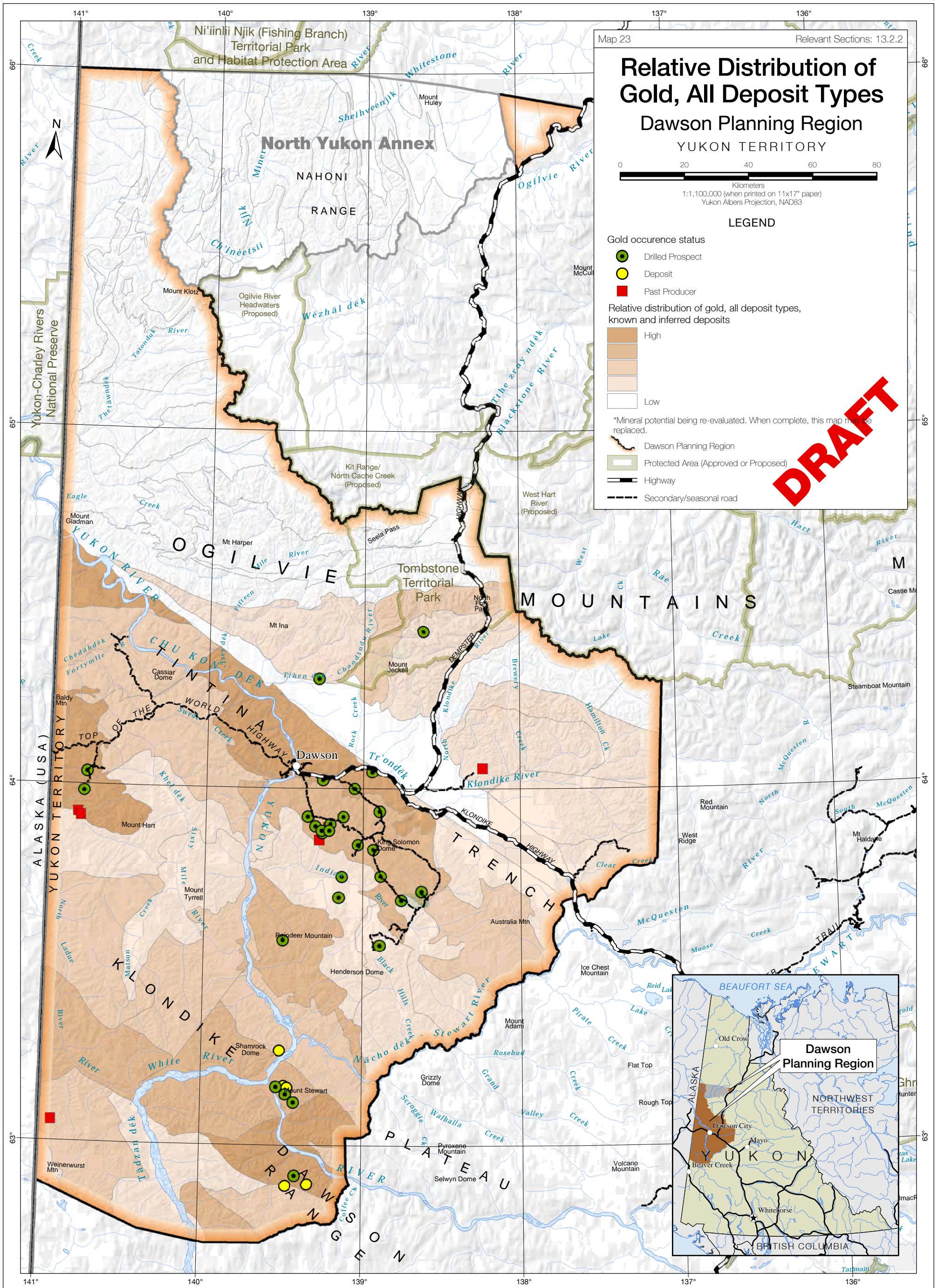
**Data disclaimer:**

This map is a graphical representation, which depicts the approximate size, configuration and spatial relationship of known geographic features. While great care has been taken to ensure the best possible quality, this document is not intended for legal descriptions and/or to calculate precise areas, dimensions or distances. We do not accept any responsibility for errors, omissions or inaccuracies in this data.

Digital copies of this map may be obtained from the Dawson Regional Planning Commission and the Yukon Land Use Planning Council websites at:

[dawson.planyukon.ca](http://dawson.planyukon.ca) and [www.planyukon.ca](http://www.planyukon.ca)

© Dawson Regional Planning Commission, August 2019



**Data sources:**

**Base data:** Transportation, watercourses and toponomy, shaded relief (GeoYukon); parks/protected areas (GeoYukon, YLUPC, US National Parks Service); provincial boundaries (Department of Natural Resources Canada), toponomy (recompiled by YLUPC from Tr'ondëk Hwëch'in and Yukon Government)

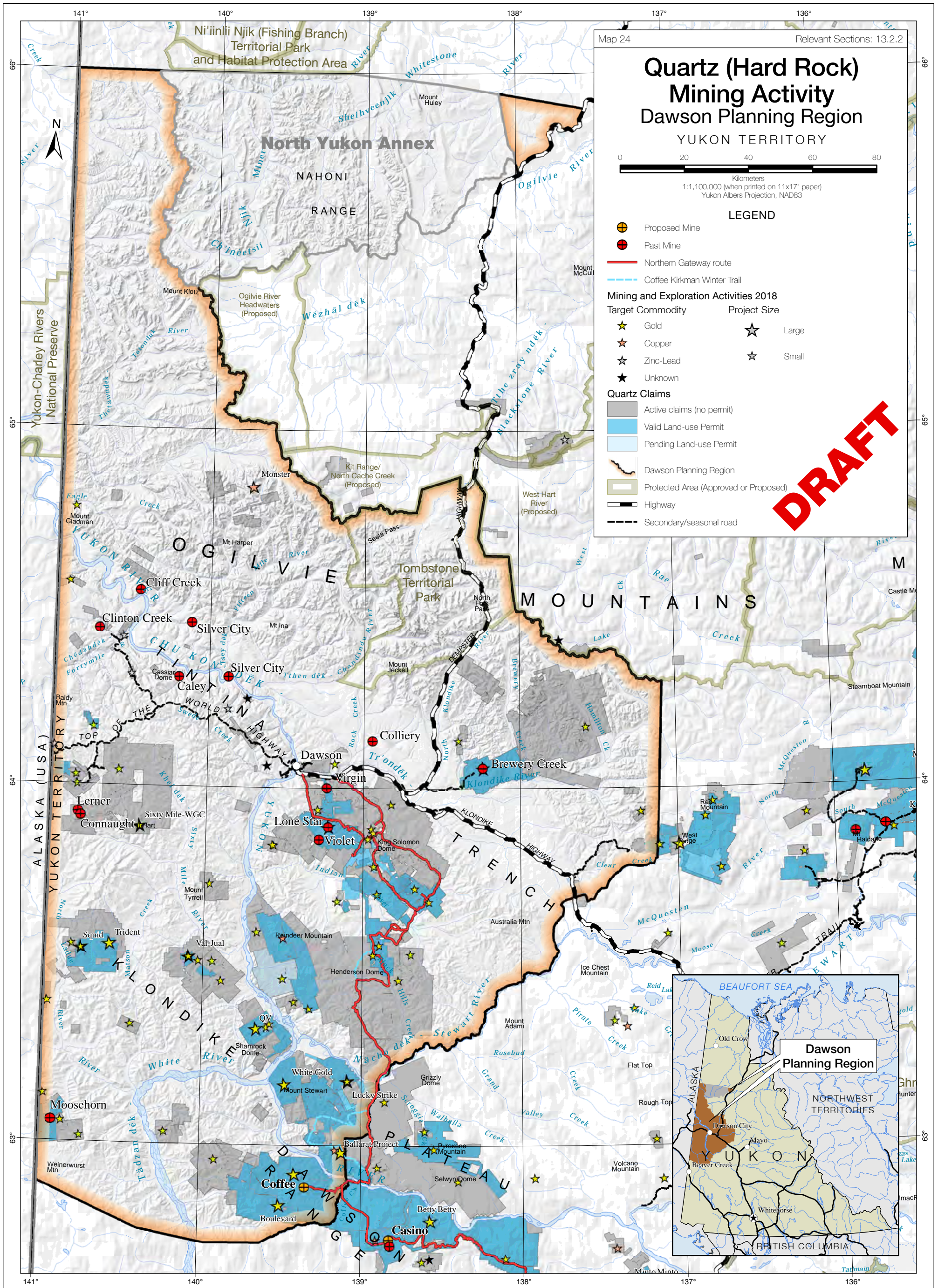
**Thematic data:** Gold potential, 2012 (Kilby, W.E. for Yukon Government - using the "Com4plusA" attribute = estimated tonnes per Km<sup>2</sup>, classified using equal intervals), Mineral Occurrences, 2019 (Yukon Government)

**Data disclaimer:**

This map is a graphical representation, which depicts the approximate size, configuration and spatial relationship of known geographic features. While great care has been taken to ensure the best possible quality, this document is not intended for legal descriptions and/or to calculate precise areas, dimensions or distances. We do not accept any responsibility for errors, omissions or inaccuracies in this data.

Digital copies of this map may be obtained from the Dawson Regional Planning Commission and the Yukon Land Use Planning Council websites at: [dawson.planyukon.ca](http://dawson.planyukon.ca) and [www.planyukon.ca](http://www.planyukon.ca)

© Dawson Regional Planning Commission, August 2019



**Data sources:**

**Base data:** Transportation, watercourses and toponomy, shaded relief (GeoYukon); parks/protected areas (GeoYukon, YLUPC, US National Parks Service); provincial boundaries (Department of Natural Resources Canada), toponymy (recompiled by YLUPC from Tr'ondëk Hwëch'in and Yukon Government)

**Thematic data:** 1:1M Quartz claims, quartz land use permits, mining and exploration activities, Northern Gateway routes (Yukon Government, January 2019), winter access to Coffee project (Gold Corp, 2019)

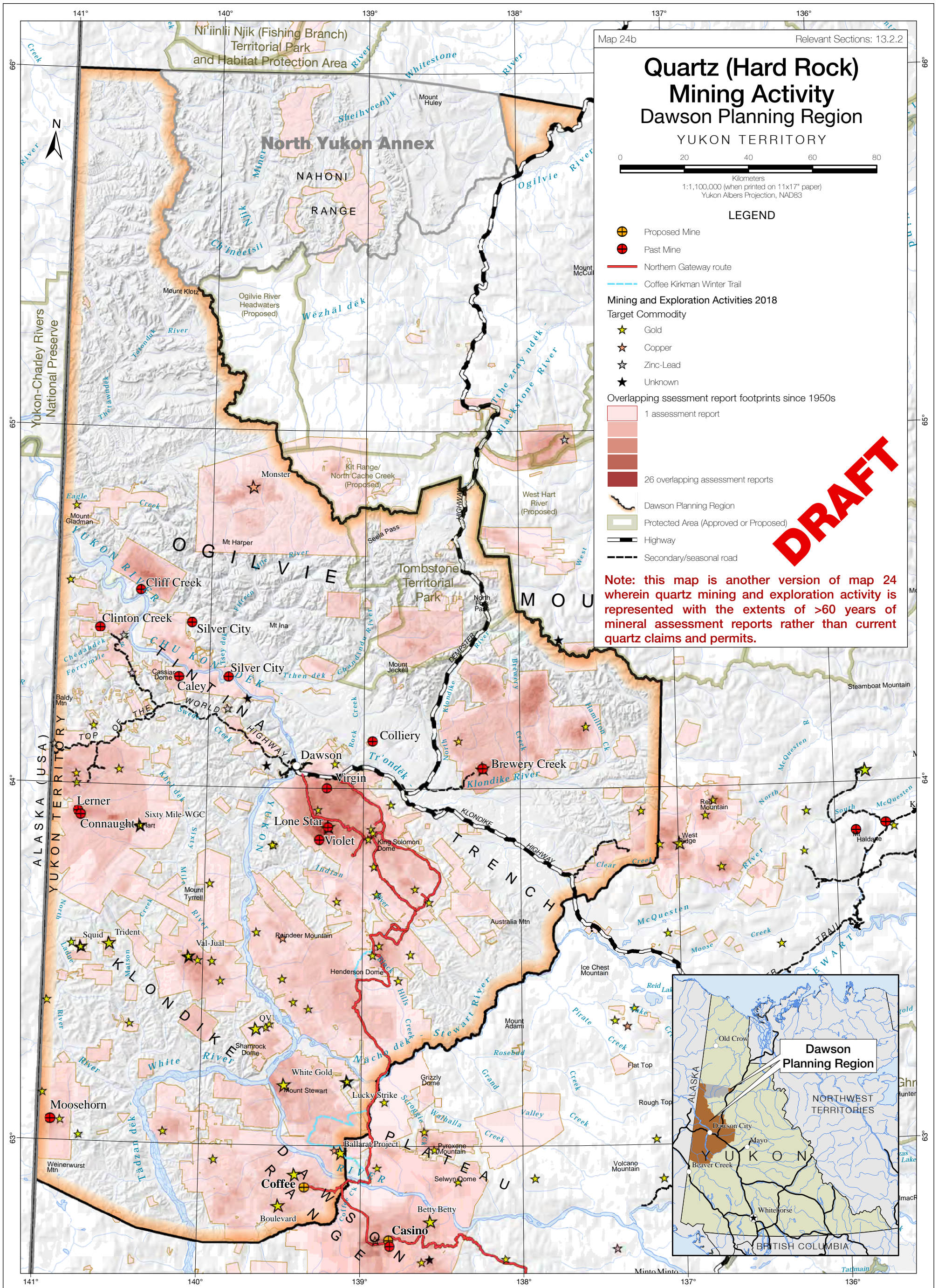
**Data disclaimer:**

This map is a graphical representation, which depicts the approximate size, configuration and spatial relationship of known geographic features. While great care has been taken to ensure the best possible quality, this document is not intended for legal descriptions and/or to calculate precise areas, dimensions or distances. We do not accept any responsibility for errors, omissions or inaccuracies in this data.

Digital copies of this map may be obtained from the Dawson Regional Planning Commission and the Yukon Land Use Planning Council websites at:

[dawson.planyukon.ca](http://dawson.planyukon.ca) and [www.planyukon.ca](http://www.planyukon.ca)

© Dawson Regional Planning Commission, August 2019



**Data sources:**

**Base data:** Transportation, watercourses and toponomy, shaded relief (GeoYukon); parks/protected areas (GeoYukon, YLUPC, US National Parks Service); provincial boundaries (Department of Natural Resources Canada), toponymy (recompiled by YLUPC from Tr'ondëk Hwëch'in and Yukon Government)

**Thematic data:** 1:1M Quartz claims, quartz land use permits, mining and exploration activities, Northern Gateway routes (Yukon Government, January 2019), winter access to Coffee project (Gold Corp, 2019)

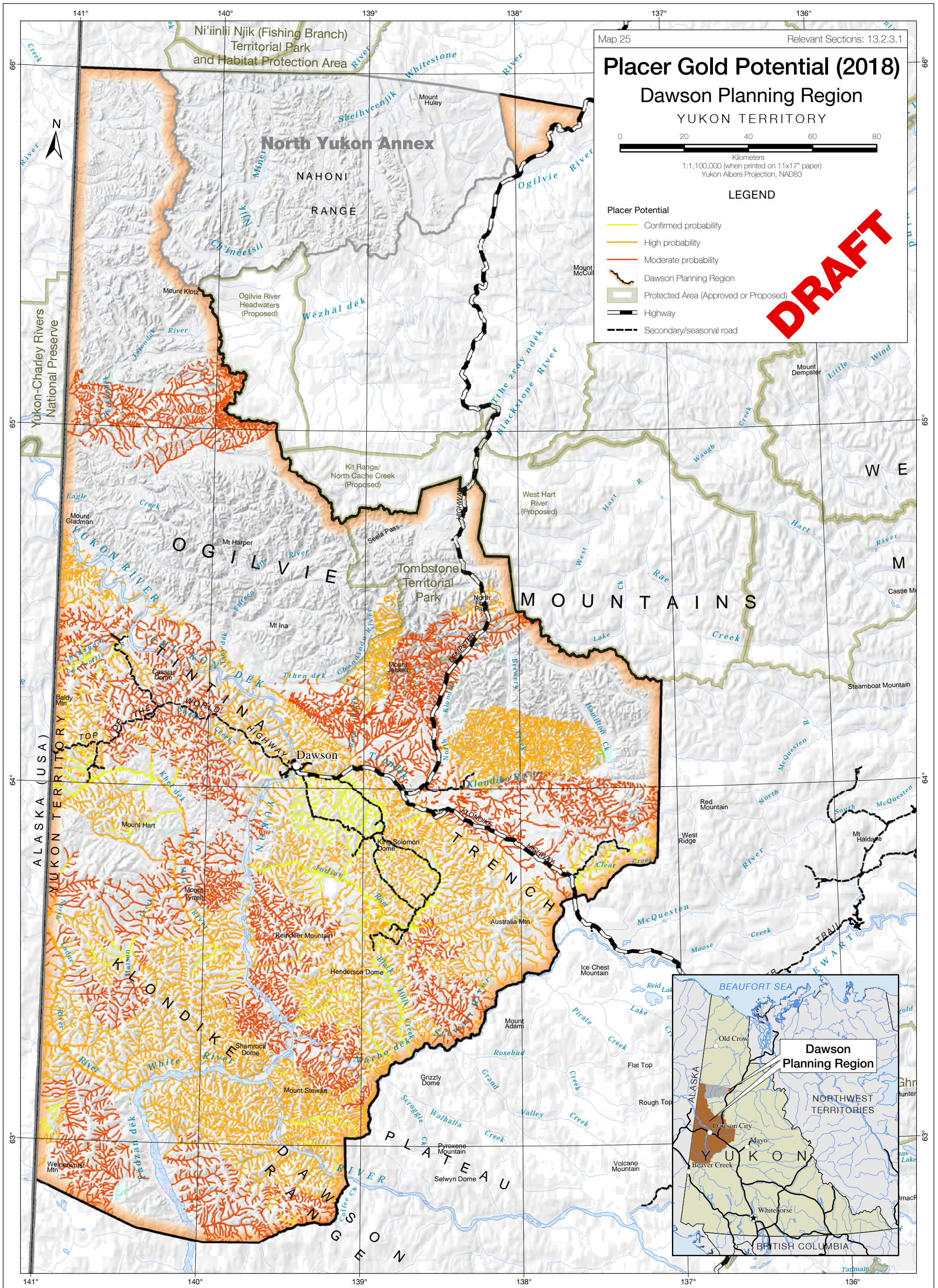
**Data disclaimer:**

This map is a graphical representation, which depicts the approximate size, configuration and spatial relationship of known geographic features. While great care has been taken to ensure the best possible quality, this document is not intended for legal descriptions and/or to calculate precise areas, dimensions or distances. We do not accept any responsibility for errors, omissions or inaccuracies in this data.

Digital copies of this map may be obtained from the Dawson Regional Planning Commission and the Yukon Land Use Planning Council websites at:

[dawson.planyukon.ca](http://dawson.planyukon.ca) and [www.planyukon.ca](http://www.planyukon.ca)

© Dawson Regional Planning Commission, August 2019



© Dawson Regional Planning Commission, August 2019

**Data sources:**

**Base data:** Transportation, watercourses and toponymy, shaded relief (GeoYukon); parks/protected areas (GeoYukon, YLUPC, US National Parks Service); provincial boundaries (Department of Natural Resources Canada), toponymy (recompiled by YLUPC from Tr'ondëk Hwëch'in and Yukon Government)

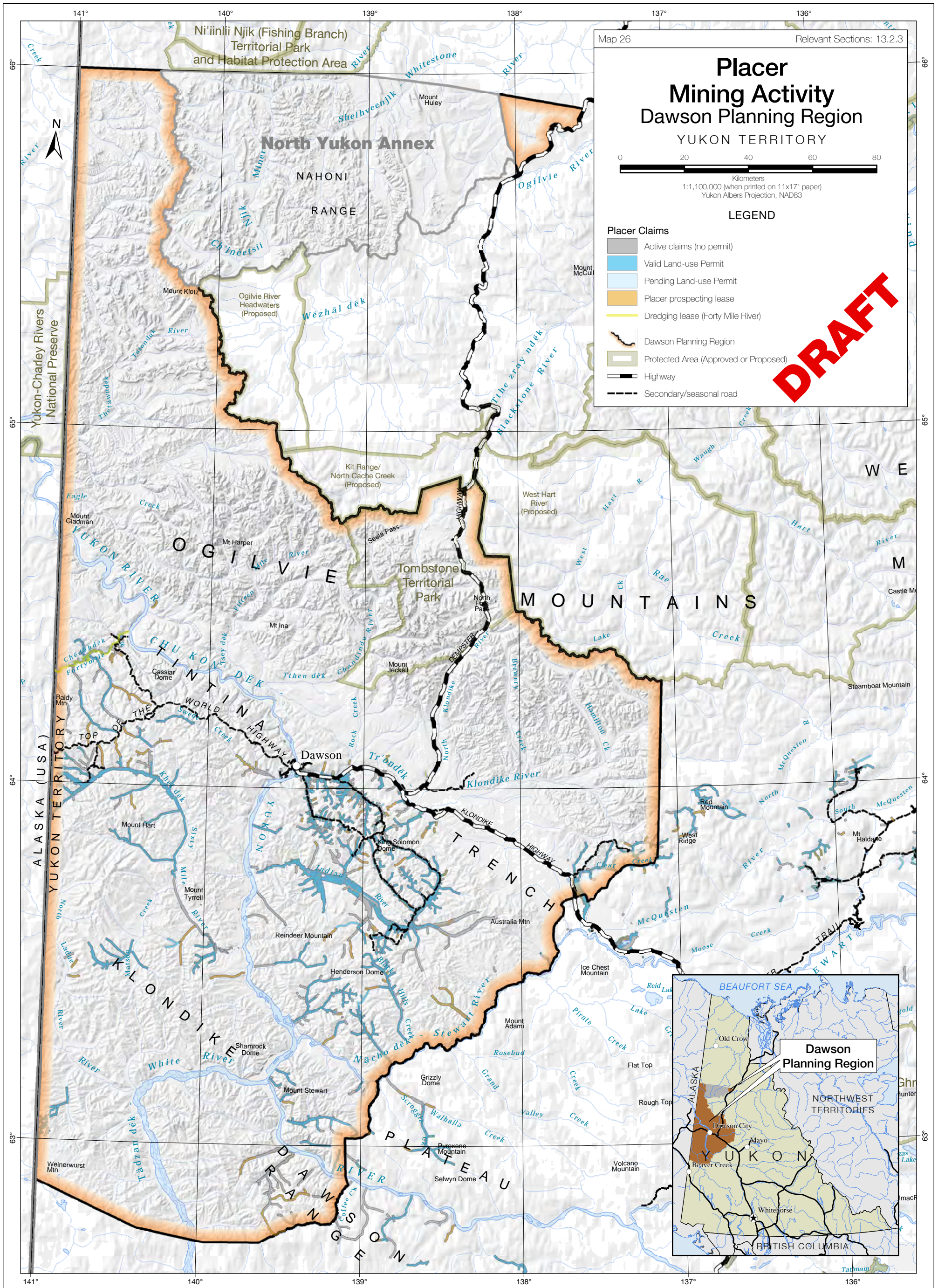
**Thematic data:** Placer potential (where no salmon spawning), 2018 (Yukon Government)

**Data disclaimer:**

This map is a graphical representation, which depicts the approximate size, configuration and spatial relationship of known geographic features. While great care has been taken to ensure the best possible quality, this document is not intended for legal descriptions and/or to calculate precise areas, dimensions or distances. We do not accept any responsibility for errors, omissions or inaccuracies in this data.

Digital copies of this map may be obtained from the Dawson Regional Planning Commission and the Yukon Land Use Planning Council websites at:

[dawson.planyukon.ca](http://dawson.planyukon.ca) and [www.planyukon.ca](http://www.planyukon.ca)



**Data sources:**

**Base data:** Transportation, watercourses and toponomy, shaded relief (GeoYukon); parks/protected areas (GeoYukon, YLUPC, US National Parks Service); provincial boundaries (Department of Natural Resources Canada), toponymy (recompiled by YLUPC from Tr'ondëk Hwëch'in and Yukon Government)

**Thematic data:** 1:1M Placer claims, 1:50k placer land use permits, prospecting leases (Yukon Government, January 2019)

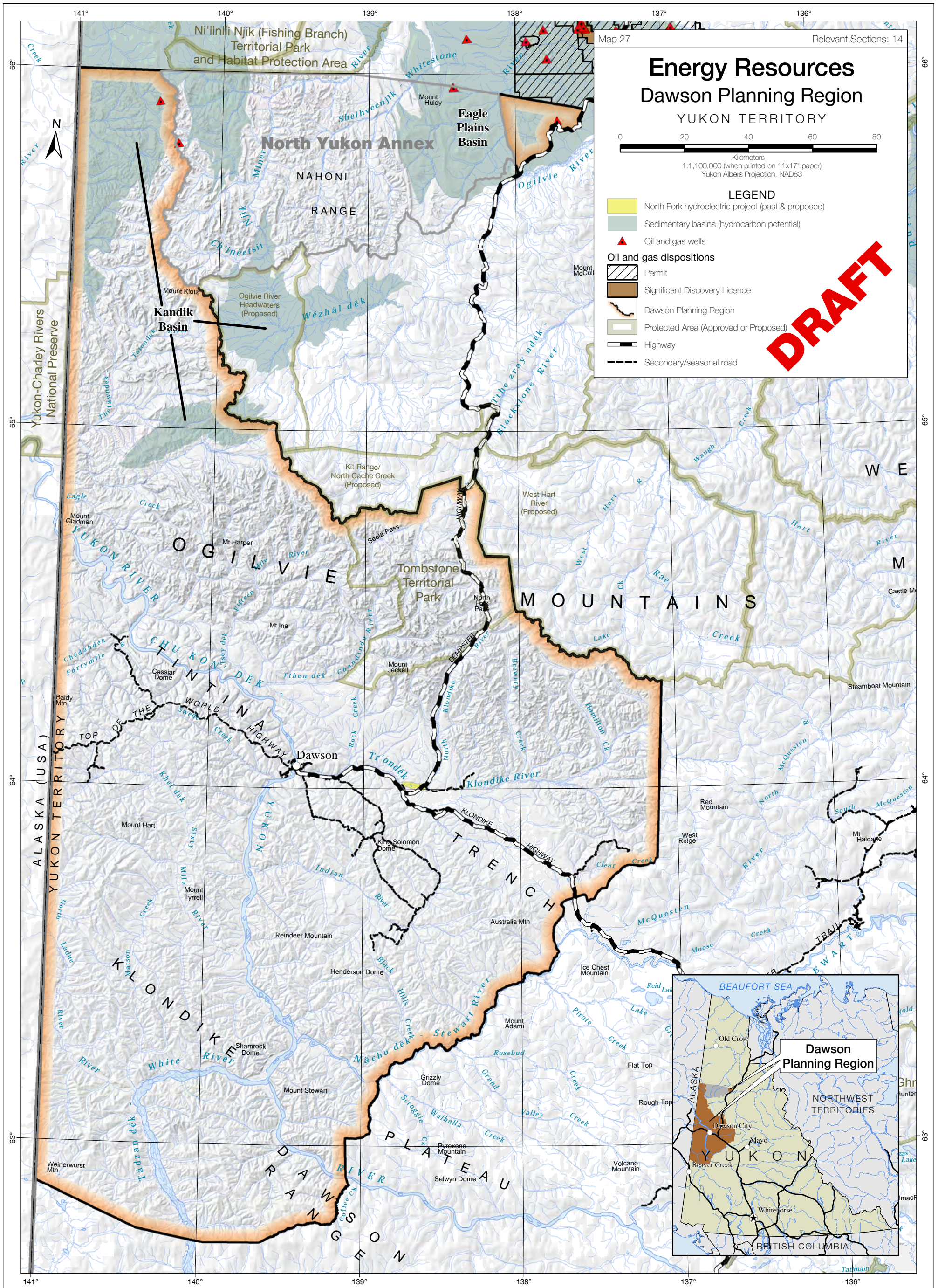
**Data disclaimer:**

This map is a graphical representation, which depicts the approximate size, configuration and spatial relationship of known geographic features. While great care has been taken to ensure the best possible quality, this document is not intended for legal descriptions and/or to calculate precise areas, dimensions or distances. We do not accept any responsibility for errors, omissions or inaccuracies in this data.

Digital copies of this map may be obtained from the Dawson Regional Planning Commission and the Yukon Land Use Planning Council websites at:

[dawson.planyukon.ca](http://dawson.planyukon.ca) and [www.planyukon.ca](http://www.planyukon.ca)

© Dawson Regional Planning Commission, August 2019



**Data sources:**

**Base data:** Transportation, watercourses and toponomy, shaded relief (GeoYukon); parks/protected areas (GeoYukon, YLUPC, US National Parks Service); provincial boundaries (Department of Natural Resources Canada), toponymy (recompiled by YLUPC from Tr'ondëk Hwëch'in and Yukon Government)

**Thematic data:** Sedimentary basins, wells and dispositions, January 2019 (Yukon Government); North Fork hydroelectric project: adapted from YESAB submission 2018-0082 (Yukon Land Use Planning Council)

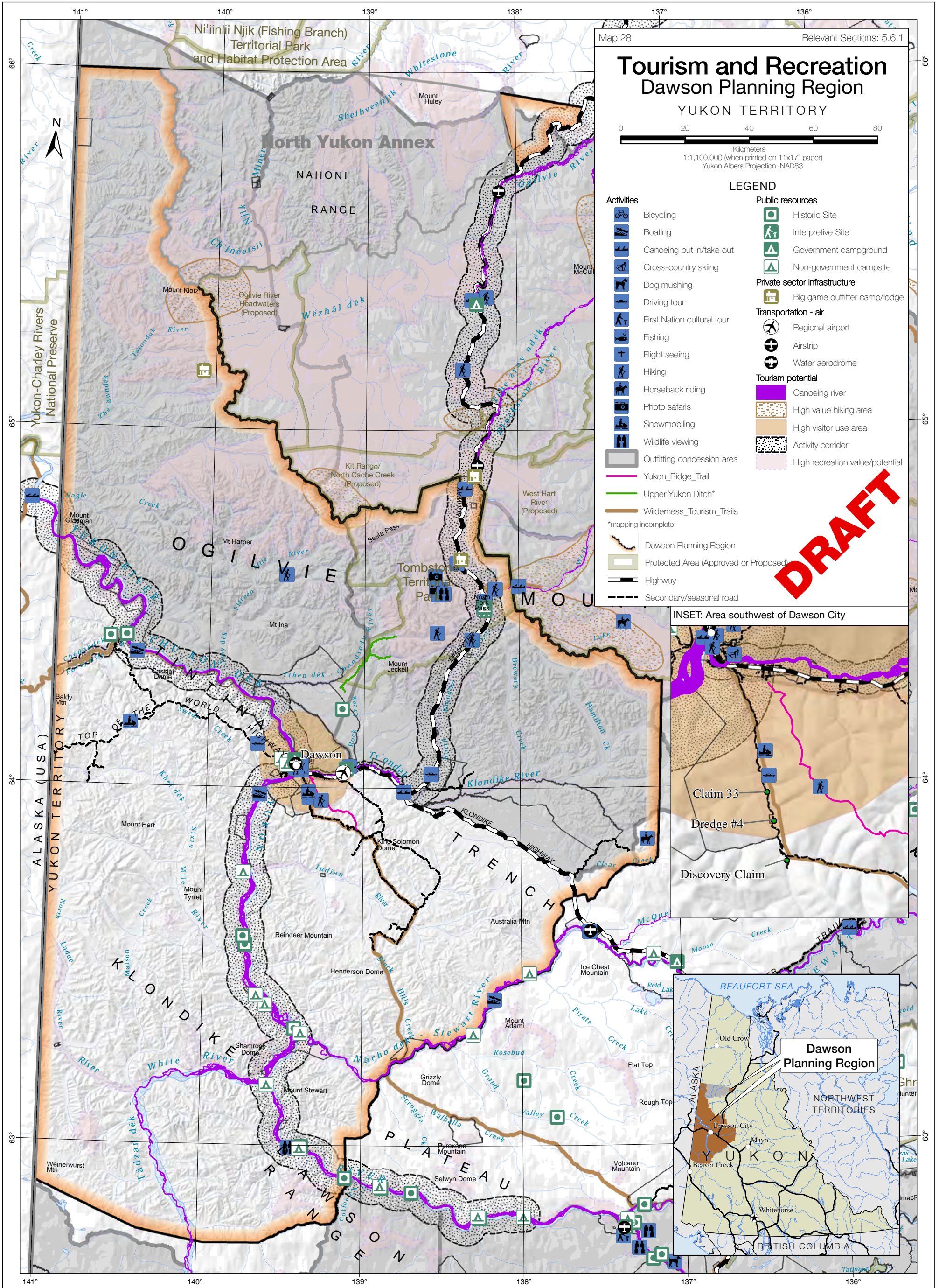
**Data disclaimer:**

This map is a graphical representation, which depicts the approximate size, configuration and spatial relationship of known geographic features. While great care has been taken to ensure the best possible quality, this document is not intended for legal descriptions and/or to calculate precise areas, dimensions or distances. We do not accept any responsibility for errors, omissions or inaccuracies in this data.

Digital copies of this map may be obtained from the Dawson Regional Planning Commission and the Yukon Land Use Planning Council websites at:

[dawson.planyukon.ca](http://dawson.planyukon.ca) and [www.planyukon.ca](http://www.planyukon.ca)

© Dawson Regional Planning Commission, August 2019



© Dawson Regional Planning Commission, August 2019

**Data sources:**

**Base data:** Transportation, watercourses and toponymy, shaded relief (GeoYukon); parks/protected areas (GeoYukon, YLUPC, US National Parks Service); provincial boundaries (Department of Natural Resources Canada), toponymy (recompiled by YLUPC from Tr'ondëk Hwëch'in and Yukon Government)

**Thematic data:** Activity and infrastructure locations, 2012; outfitting areas, 2018, Yukon Ditch, 2014 (Yukon Government); Yukon Ridge Trail, 2019 (YLUPC recompiled from Yukon Government lands data)

**Data disclaimer:**

This map is a graphical representation, which depicts the approximate size, configuration and spatial relationship of known geographic features. While great care has been taken to ensure the best possible quality, this document is not intended for legal descriptions and/or to calculate precise areas, dimensions or distances. We do not accept any responsibility for errors, omissions or inaccuracies in this data.

Digital copies of this map may be obtained from the Dawson Regional Planning Commission and the Yukon Land Use Planning Council websites at: [dawson.planyukon.ca](http://dawson.planyukon.ca) and [www.planyukon.ca](http://www.planyukon.ca)