

Map 11 Relevant Sections: 5.8.3

Climate Change Forecasts Dawson Planning Region

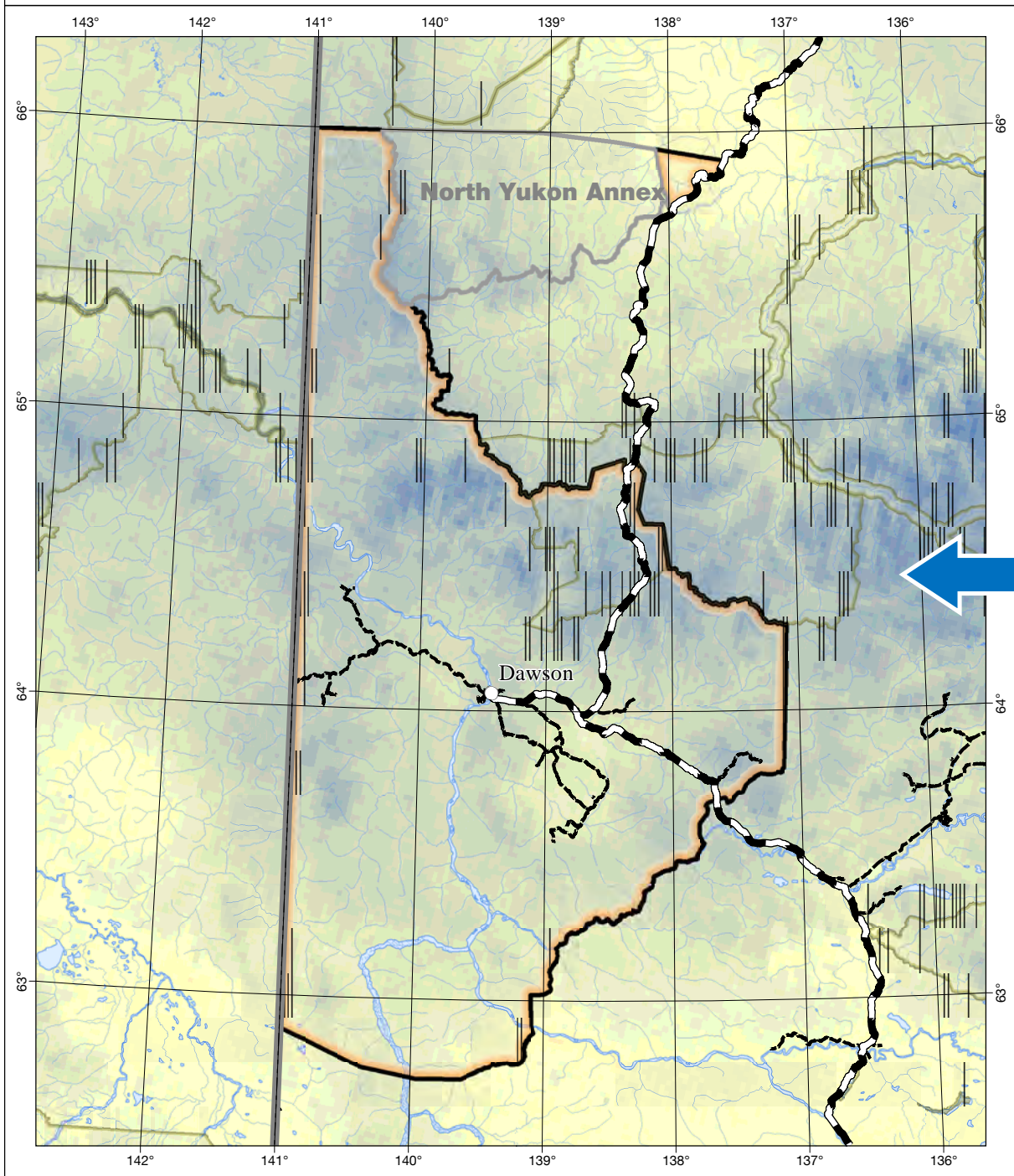
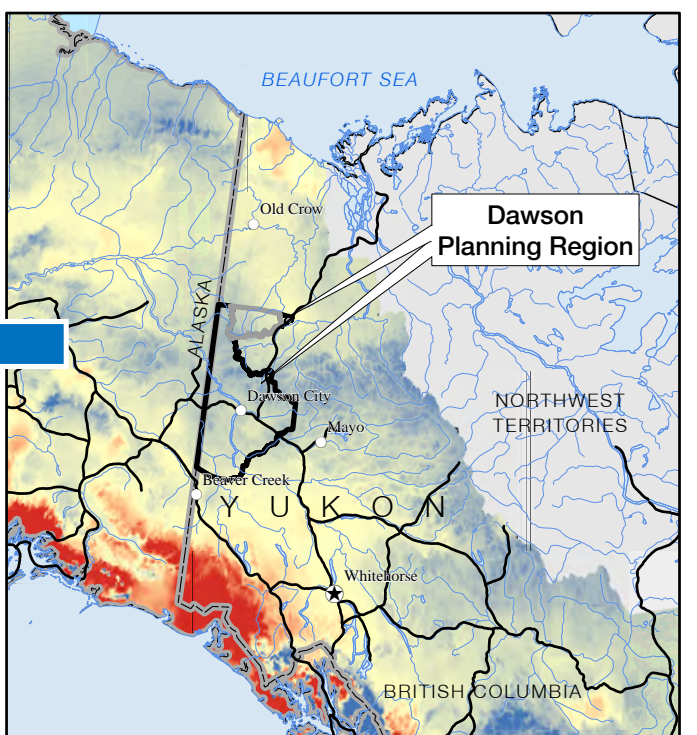
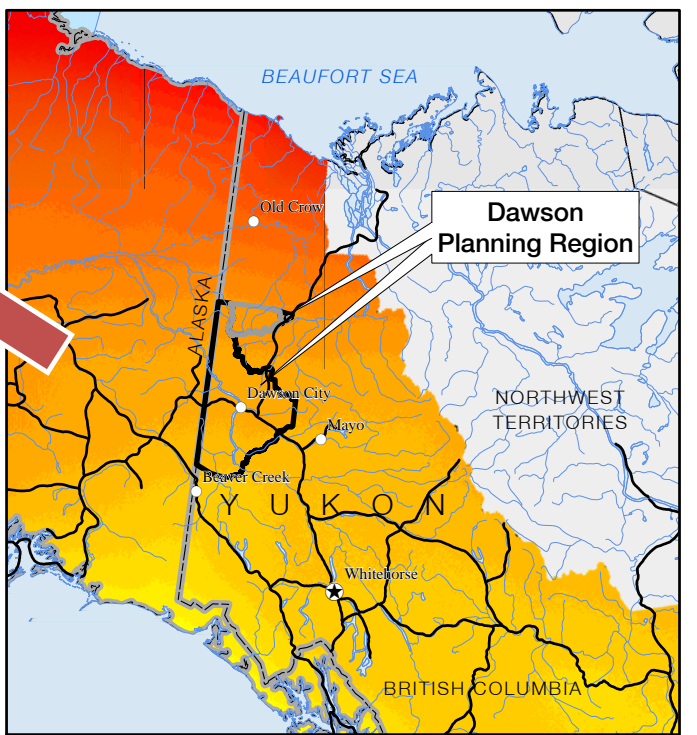
YUKON TERRITORY

0 40 80 120 160
Kilometers
1:1,100,000 (when printed on 11x17" paper)
Yukon Albers Projection, NAD83

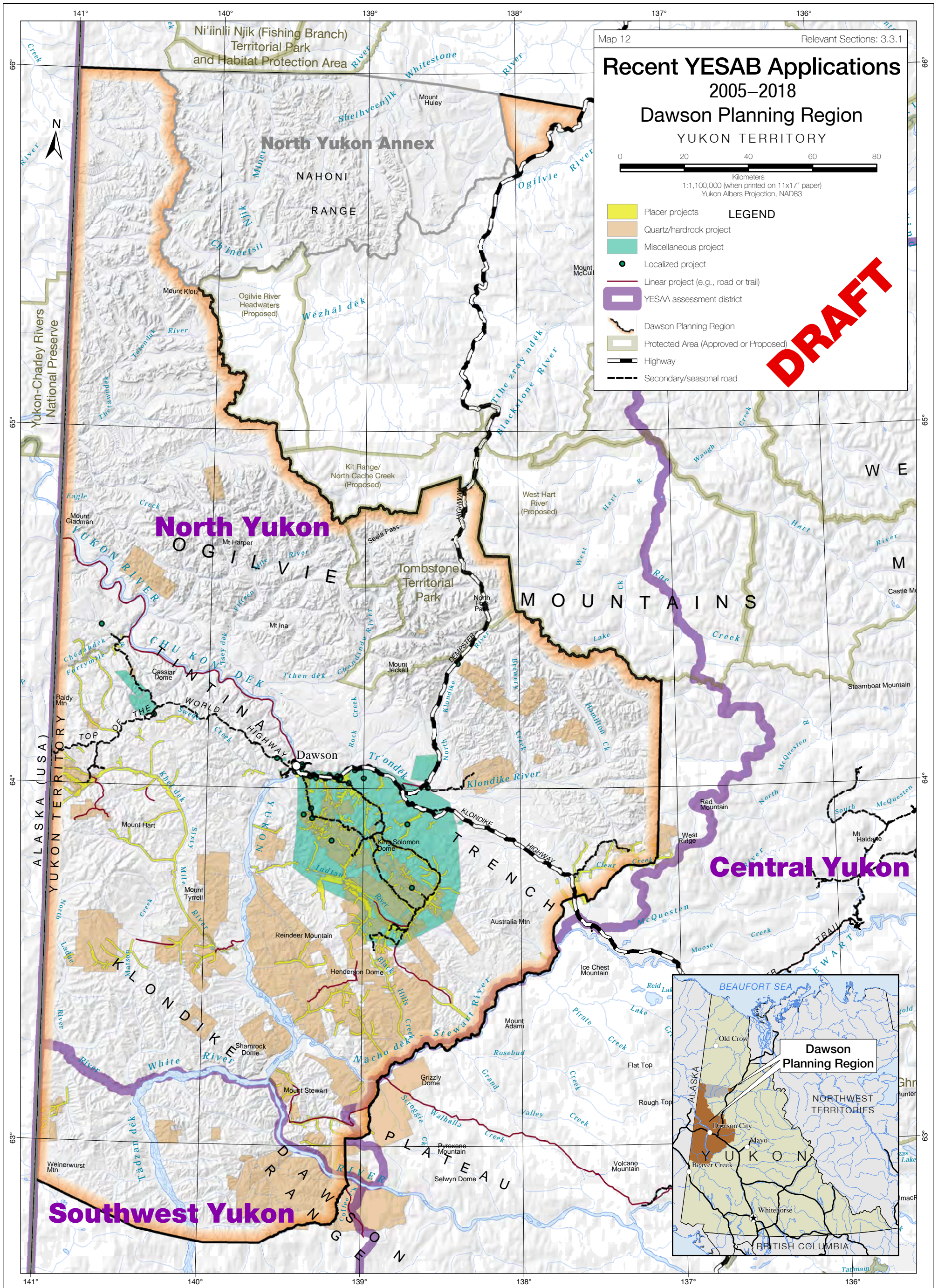
LEGEND

- High : 7.5
- Low : 4
- Degrees Celsius increase by 2100
- High : 50
- Low : -50
- Centimetres change in annual precipitation by 2100
- Dawson Planning Region
- Protected Area (Approved or Proposed)
- Highway
- Secondary/seasonal road

DRAFT



Data sources:
Base data: Transportation, watercourses and toponomy, shaded relief (GeoYukon); parks/protected areas (GeoYukon, YLUPC, US National Parks Service); provincial boundaries (Department of Natural Resources Canada), toponymy (recompiled by YLUPC from Tr'ondëk Hwëch'in and Yukon Government)
Thematic data: Climate model uses the first ensemble model run of the IPCC's Fifth Assessment Report, RCP 8.5 (most conservative forecast of change of greenhouse gas emissions) (SNAP at the University of Alaska, recompiled by Yukon Government, 2019)
Data disclaimer:
 This map is a graphical representation, which depicts the approximate size, configuration and spatial relationship of known geographic features. While great care has been taken to ensure the best possible quality, this document is not intended for legal descriptions and/or to calculate precise areas, dimensions or distances. We do not accept any responsibility for errors, omissions or inaccuracies in this data.
 Digital copies of this map may be obtained from the Dawson Regional Planning Commission and the Yukon Land Use Planning Council websites at: dawson.planyukon.ca and www.planyukon.ca



Map 12 Relevant Sections: 3.3.1

Recent YESAB Applications 2005-2018

Dawson Planning Region

YUKON TERRITORY

0 20 40 60 80
Kilometers
1:1,100,000 (when printed on 11x17" paper)
Yukon Albers Projection, NAD83

LEGEND

- Placer projects
- Quartz/hardrock project
- Miscellaneous project
- Localized project
- Linear project (e.g., road or trail)
- YESAA assessment district
- Dawson Planning Region
- Protected Area (Approved or Proposed)
- Highway
- Secondary/seasonal road

DRAFT

Data sources:
Base data: Transportation, watercourses and toponomy, shaded relief (GeoYukon); parks/protected areas (GeoYukon, YLUPC, US National Parks Service); provincial boundaries (Department of Natural Resources Canada), toponymy (recompiled by YLUPC from Tr'ondëk Hwëch'in and Yukon Government)
Thematic data: Project extents, January 2019 (Yukon Environmental and Social-economic Assessment Board);
Data disclaimer:
 This map is a graphical representation, which depicts the approximate size, configuration and spatial relationship of known geographic features. While great care has been taken to ensure the best possible quality, this document is not intended for legal descriptions and/or to calculate precise areas, dimensions or distances. We do not accept any responsibility for errors, omissions or inaccuracies in this data.

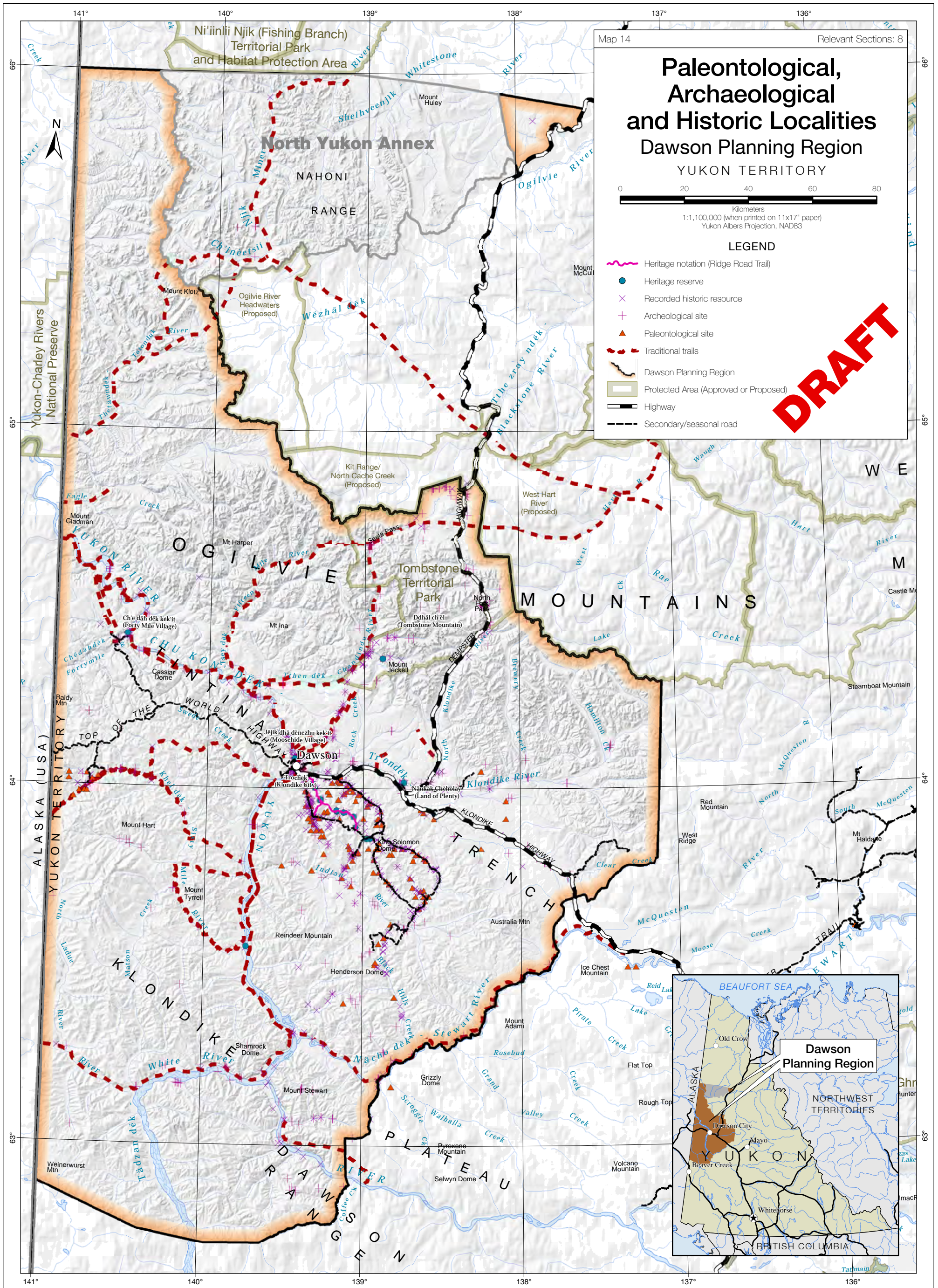
Digital copies of this map may be obtained from the Dawson Regional Planning Commission and the Yukon Land Use Planning Council websites at:
dawson.planyukon.ca and www.planyukon.ca

Dawson Regional Resource Assessment Report 2019

© Dawson Regional Planning Commission, August 2019

**First Nation Land Use
(tentative title)**
Dawson Planning Region
YUKON TERRITORY

This map is under development.



Data sources:

Base data: Transportation, watercourses and toponomy, shaded relief (GeoYukon); parks/protected areas (GeoYukon, YLUPC, US National Parks Service); provincial boundaries (Department of Natural Resources Canada), toponymy (recompiled by YLUPC from Tr'ondëk Hwëch'in and Yukon Government)

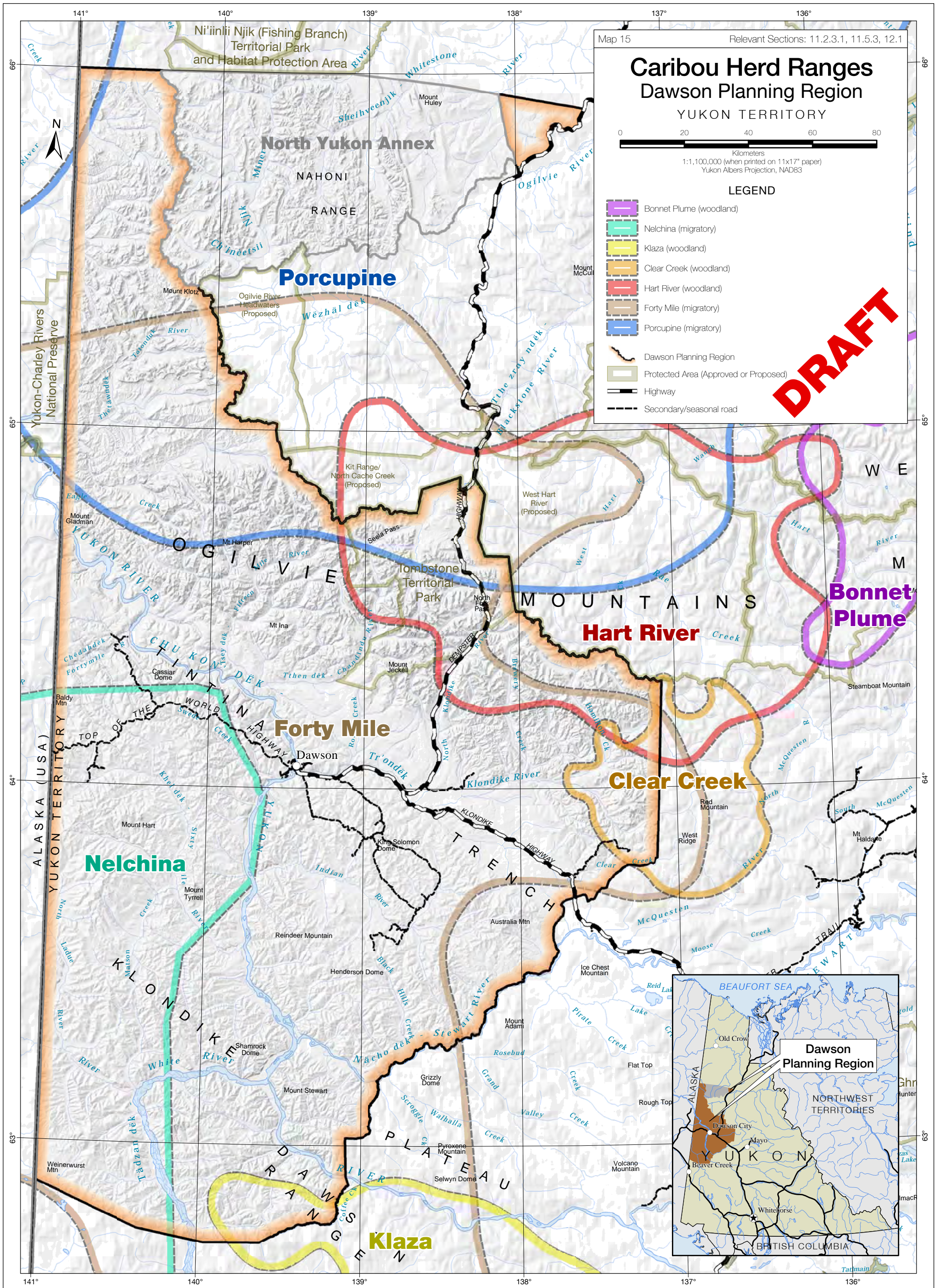
Thematic data: Heritage notation and reserves, June 2019 (Yukon Government); Historic resources (Dawson Region + Annex only) from the Yukon Historic Sites Database, December 2018 (Yukon Government); Archeological sites, February 2019 (Yukon Government); Paleontological sites around the Dawson Region, 2012 (Yukon Government); Traditional Trails, compiled from various sources, 2012 (Tr'ondëk Hwëch'in)

Data disclaimer:

This map is a graphical representation, which depicts the approximate size, configuration and spatial relationship of known geographic features. While great care has been taken to ensure the best possible quality, this document is not intended for legal descriptions and/or to calculate precise areas, dimensions or distances. We do not accept any responsibility for errors, omissions or inaccuracies in this data.

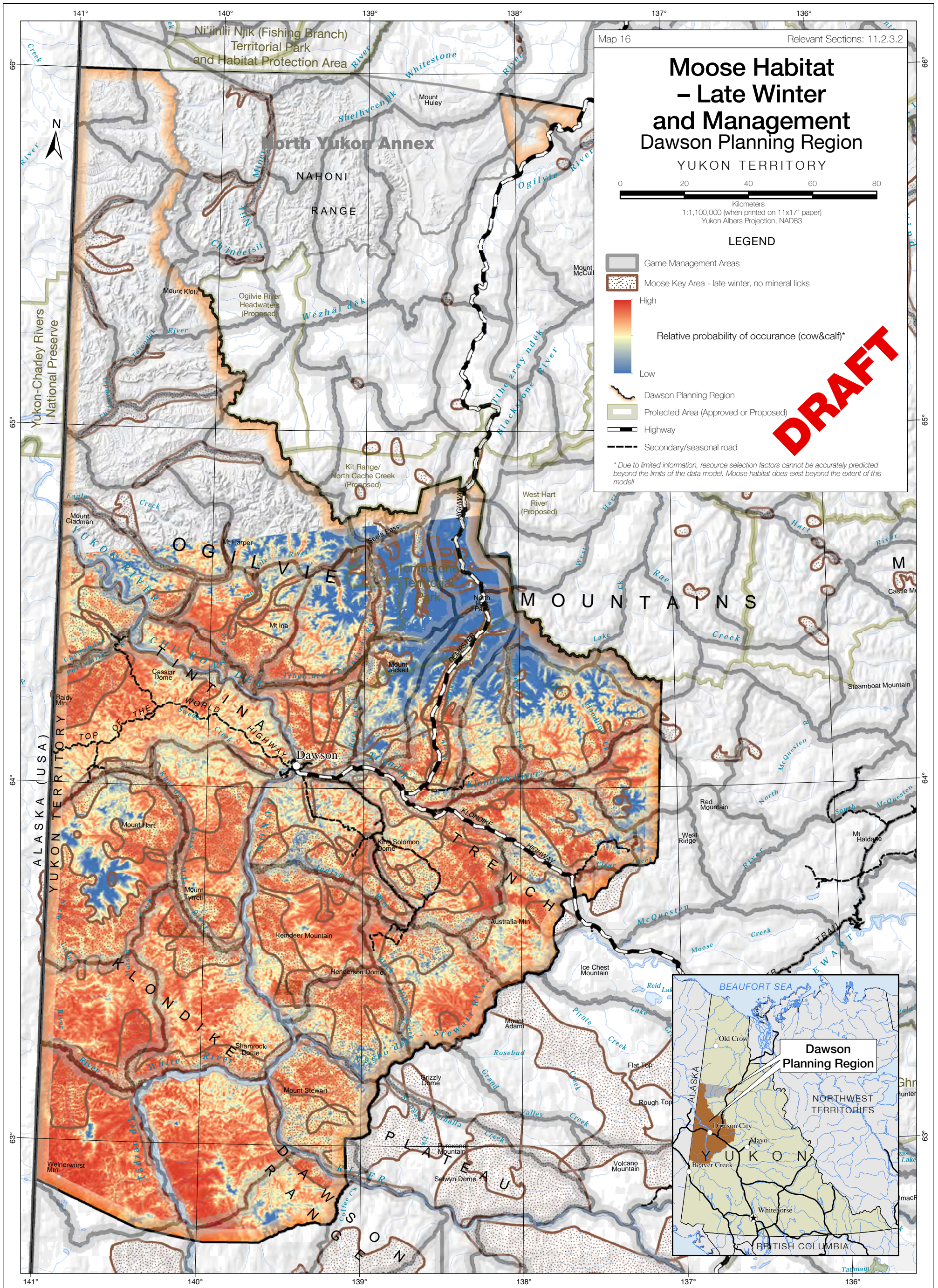
Digital copies of this map may be obtained from the Dawson Regional Planning Commission and the Yukon Land Use Planning Council websites at:

dawson.planyukon.ca and www.planyukon.ca



Data sources:
Base data: Transportation, watercourses and toponomy, shaded relief (GeoYukon); parks/protected areas (GeoYukon, YLUPC, US National Parks Service); provincial boundaries (Department of Natural Resources Canada), toponymy (recompiled by YLUPC from Tr'ondëk Hwëch'in and Yukon Government)
Thematic data: Fortymile caribou Herd habitat suitability model, 2011; Herd ranges, 2018 (Yukon Government)
Data disclaimer:
 This map is a graphical representation, which depicts the approximate size, configuration and spatial relationship of known geographic features. While great care has been taken to ensure the best possible quality, this document is not intended for legal descriptions and/or to calculate precise areas, dimensions or distances. We do not accept any responsibility for errors, omissions or inaccuracies in this data.
 Digital copies of this map may be obtained from the Dawson Regional Planning Commission and the Yukon Land Use Planning Council websites at: dawson.planyukon.ca and www.planyukon.ca

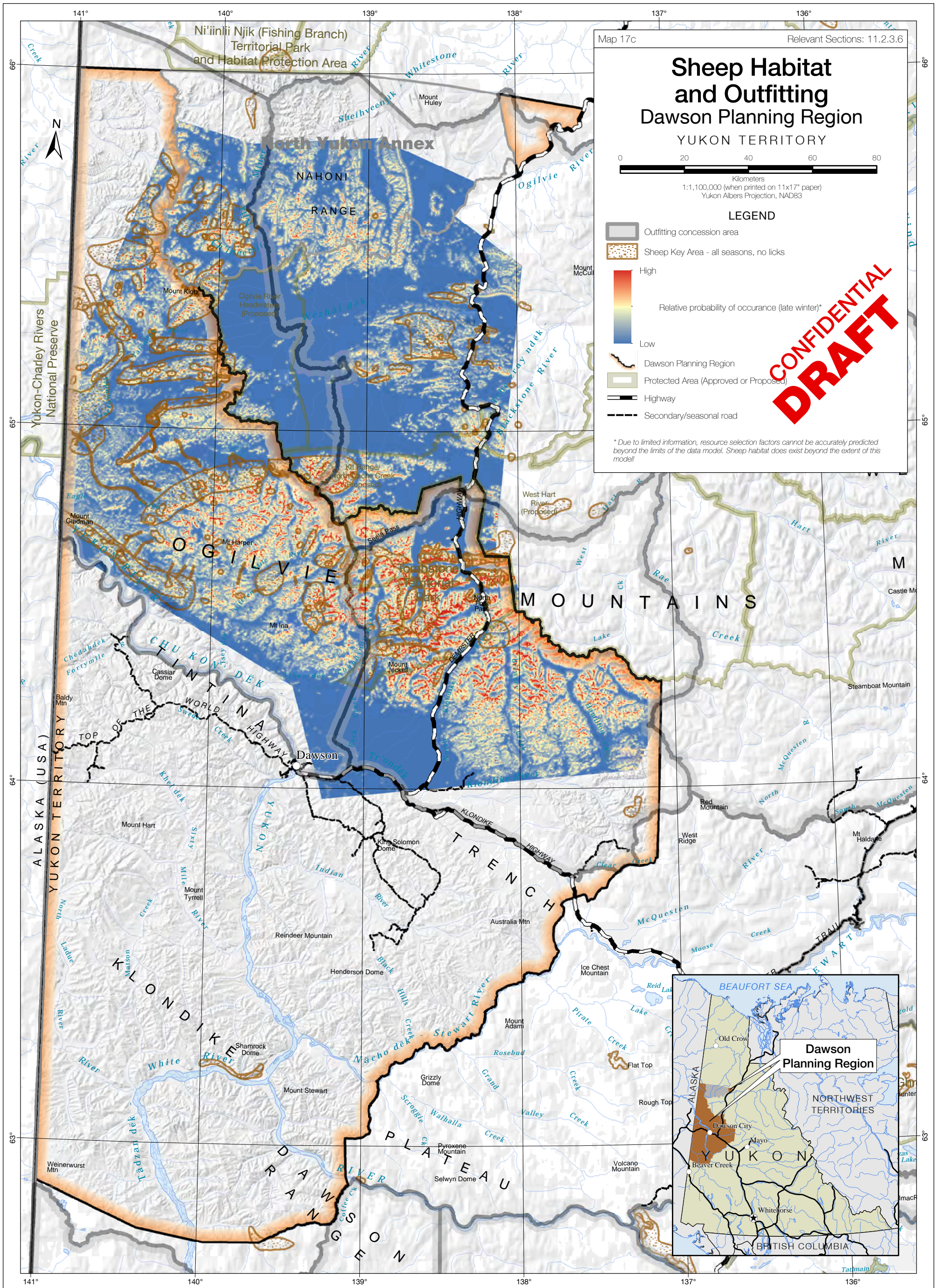
© Dawson Regional Planning Commission, August 2019



Data sources:
Base data: Transportation, watercourses and toponomy, shaded relief (GeoYukon); parks/protected areas (GeoYukon, YLUPC, US National Parks Service); provincial boundaries (Department of Natural Resources Canada), toponymy (recompiled by YLUPC from Tr'ondëk Hwëch'in and Yukon Government)
Thematic data: Moose habitat selection model, 2012; Yukon Wildlife Key Areas, 2019 (Yukon Government)

Data disclaimer:
 This map is a graphical representation, which depicts the approximate size, configuration and spatial relationship of known geographic features. While great care has been taken to ensure the best possible quality, this document is not intended for legal descriptions and/or to calculate precise areas, dimensions or distances. We do not accept any responsibility for errors, omissions or inaccuracies in this data. Digital copies of this map may be obtained from the Dawson Regional Planning Commission and the Yukon Land Use Planning Council websites at:
dawson.planyukon.ca and www.planyukon.ca

© Dawson Regional Planning Commission, August 2019



Data sources:

Base data: Transportation, watercourses and toponomy, shaded relief (GeoYukon); parks/protected areas (GeoYukon, YLUPC, US National Parks Service); provincial boundaries (Department of Natural Resources Canada), toponymy (recompiled by YLUPC from Tr'ondëk Hwëch'in and Yukon Government)

Thematic data: Sheep habitat selection model, 2009; Yukon Wildlife Key Areas, 2019; outfitting concessions, 2019 (Yukon Government)

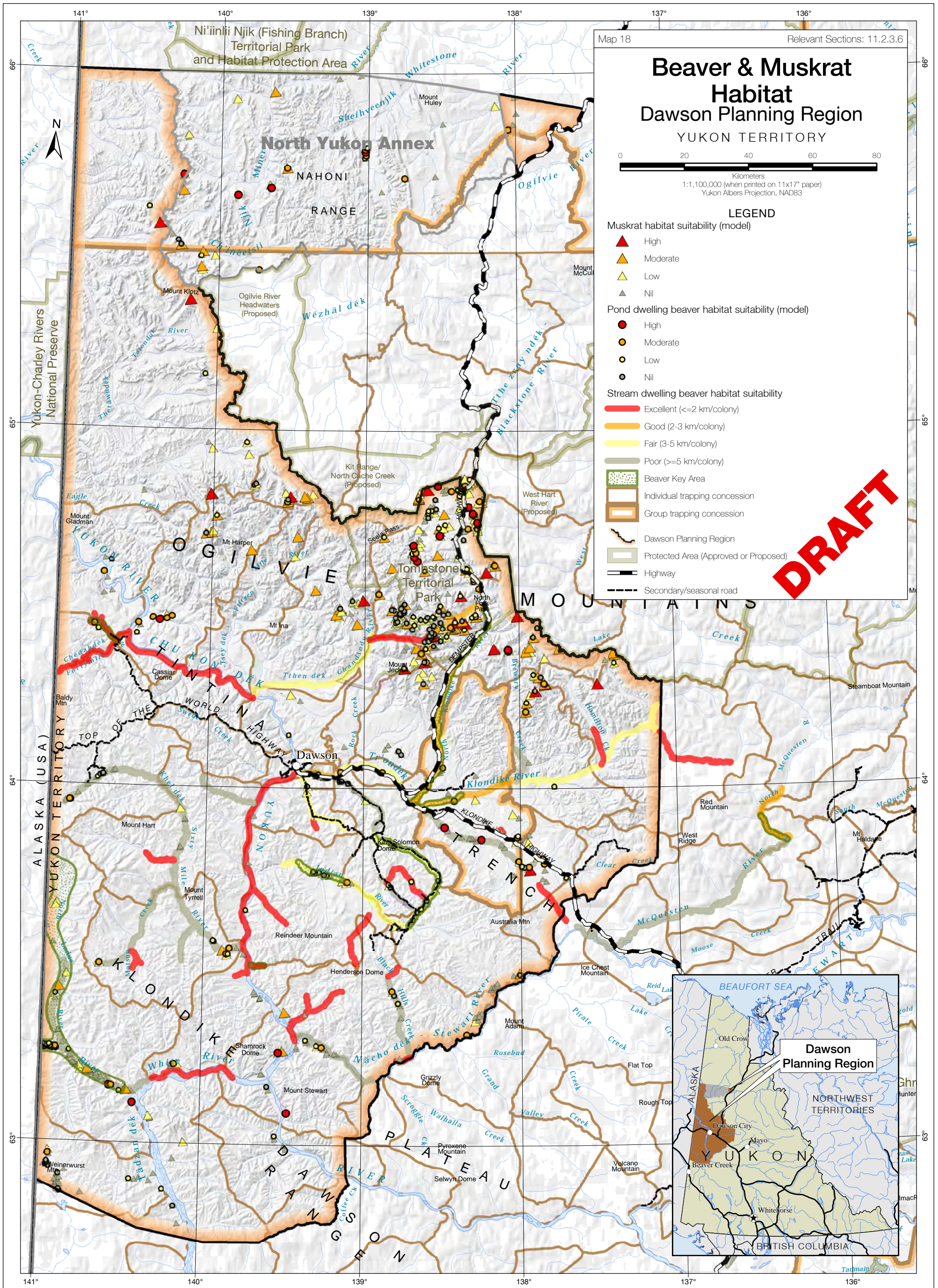
Data disclaimer:

This map is a graphical representation, which depicts the approximate size, configuration and spatial relationship of known geographic features. While great care has been taken to ensure the best possible quality, this document is not intended for legal descriptions and/or to calculate precise areas, dimensions or distances. We do not accept any responsibility for errors, omissions or inaccuracies in this data.

Digital copies of this map may be obtained from the Dawson Regional Planning Commission and the Yukon Land Use Planning Council websites at:

dawson.planyukon.ca and www.planyukon.ca

© Dawson Regional Planning Commission, August 2019



Data sources:

Base data: Transportation, watercourses and toponomy, shaded relief (GeoYukon); parks/protected areas (GeoYukon, YLUPC, US National Parks Service); provincial boundaries (Department of Natural Resources Canada), toponymy (recompiled by YLUPC from Tr'ondëk Hwëch'in and Yukon Government)

Thematic data: Pond beaver habitat model, 2012; Stream beaver survey results, 2008; Yukon Wildlife Key Areas, 2019; Trapping concessions, 2019 (Yukon Government)

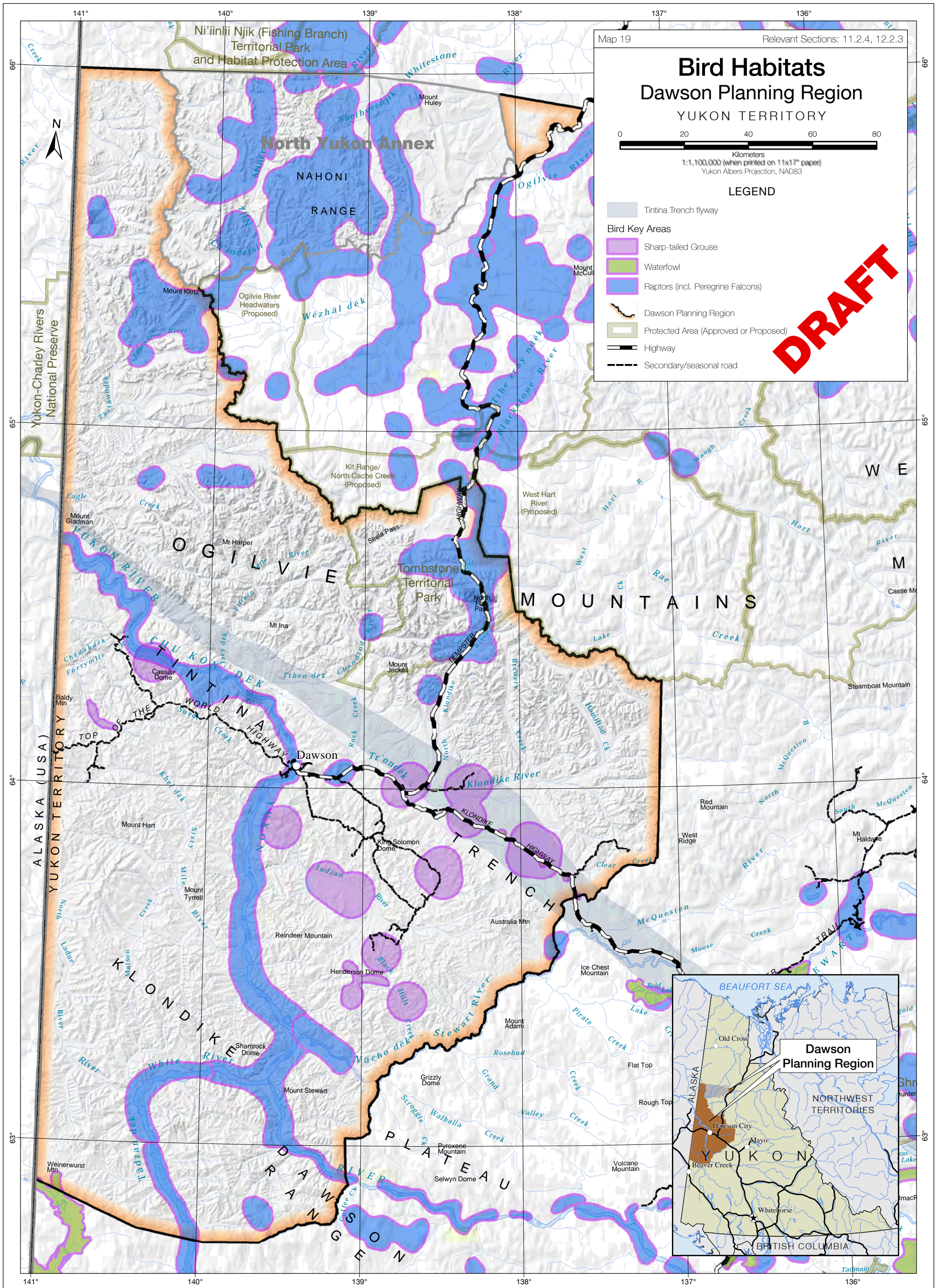
Data disclaimer:

This map is a graphical representation, which depicts the approximate size, configuration and spatial relationship of known geographic features. While great care has been taken to ensure the best possible quality, this document is not intended for legal descriptions and/or to calculate precise areas, dimensions or distances. We do not accept any responsibility for errors, omissions or inaccuracies in this data.

Digital copies of this map may be obtained from the Dawson Regional Planning Commission and the Yukon Land Use Planning Council websites at:

dawson.planyukon.ca and www.planyukon.ca

© Dawson Regional Planning Commission, August 2019



Map 19 Relevant Sections: 11.2.4, 12.2.3

Bird Habitats

Dawson Planning Region

YUKON TERRITORY

0 20 40 60 80
Kilometers
1:1,100,000 (when printed on 11x17" paper)
Yukon Albers Projection, NAD83

LEGEND

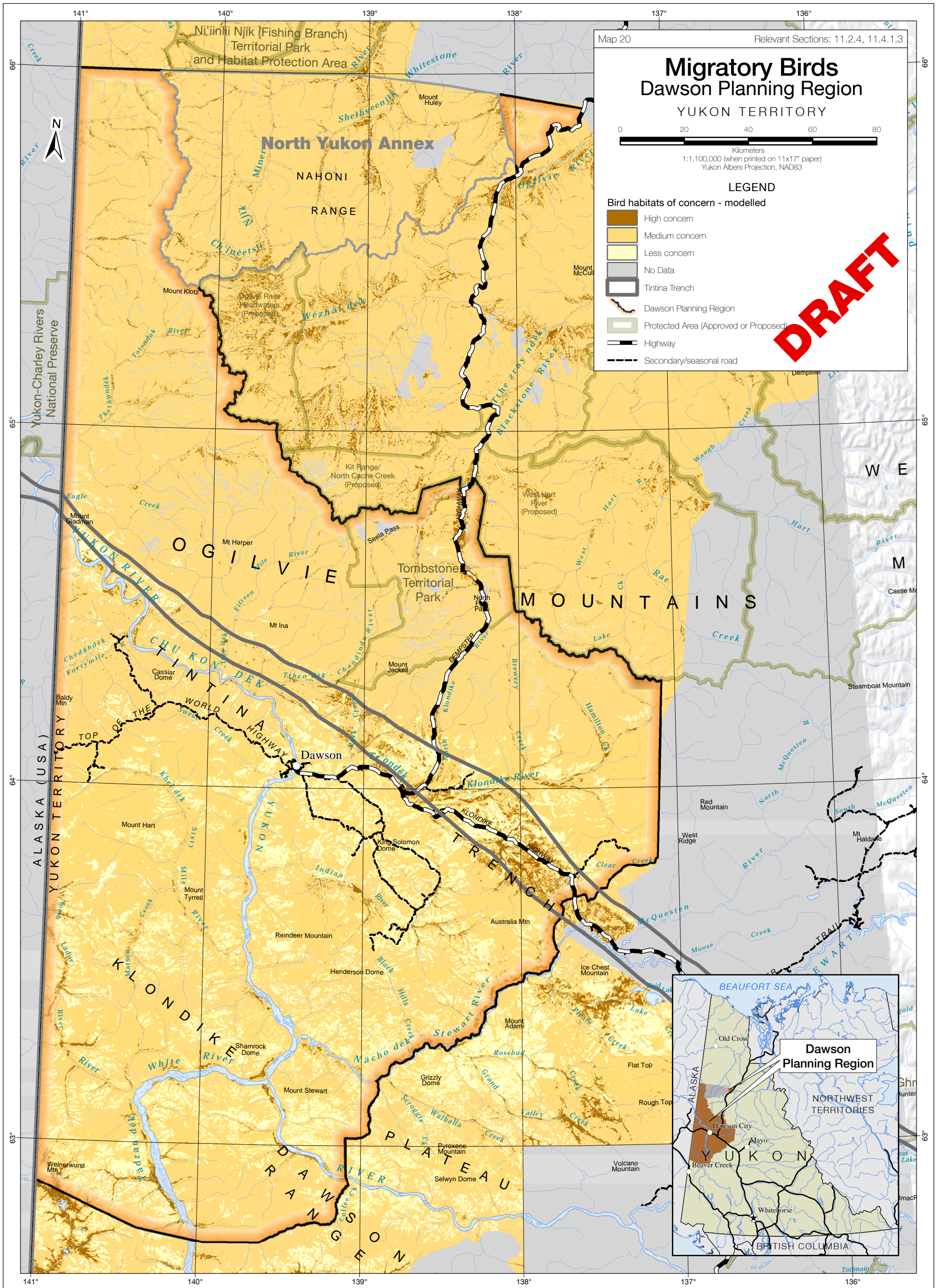
- Tintina Trench flyway
- Bird Key Areas**
 - Sharp-tailed Grouse
 - Waterfowl
 - Raptors (incl. Peregrine Falcons)
- Dawson Planning Region
- Protected Area (Approved or Proposed)
- Highway
- Secondary/seasonal road

DRAFT

Data sources:
Base data: Transportation, watercourses and toponomy, shaded relief (GeoYukon); parks/protected areas (GeoYukon, YLUPC, US National Parks Service); provincial boundaries (Department of Natural Resources Canada), toponomy (recompiled by YLUPC from Tr'ondëk Hwëch'in and Yukon Government)
Thematic data: Bird key areas (Yukon Wildlife Key Area Inventory 2018 and 2019 interim update, Government of Yukon); Tintina Trench (from Yukon Government's Physiographic Regions, 2018)
Data disclaimer:
 This map is a graphical representation, which depicts the approximate size, configuration and spatial relationship of known geographic features. While great care has been taken to ensure the best possible quality, this document is not intended for legal descriptions and/or to calculate precise areas, dimensions or distances. We do not accept any responsibility for errors, omissions or inaccuracies in this data.
 Digital copies of this map may be obtained from the Dawson Regional Planning Commission and the Yukon Land Use Planning Council websites at:
dawson.planyukon.ca and www.planyukon.ca

© Dawson Regional Planning Commission, August 2019

Dawson Regional Resource Assessment Report 2019



Data sources:

Base data: Transportation, watercourses and toponomy, shaded relief (GeoYukon); parks/protected areas (GeoYukon, YLUPC, US National Parks Service); provincial boundaries (Department of Natural Resources Canada), toponomy (recompiled by YLUPC from Tr'ondëk Hwëch'in and Yukon Government)

Thematic data: Tintina Trench (from Yukon Government's Physiographic Regions, 2018); Bird habitat model based on YLUPC's interpretation of a 2018 letter from CWS to the DRPC using available land classification (Ecological Land Classification: Grods, J., S.R. Francis, J.C. Meikle and S. Lapointe. 2012. West-central broad ecosystems (Version 1.1). Spatial data created for Environment, Government of Yukon by Makonis Consulting Ltd. and Associates, West Kelowna, BC.)

Data disclaimer:

This map is a graphical representation, which depicts the approximate size, configuration and spatial relationship of known geographic features. While great care has been taken to ensure the best possible quality, this document is not intended for legal descriptions and/or to calculate precise areas, dimensions or distances. We do not accept any responsibility for errors, omissions or inaccuracies in this data.

Digital copies of this map may be obtained from the Dawson Regional Planning Commission and the Yukon Land Use Planning Council websites at:

dawson.planyukon.ca and www.planyukon.ca

© Dawson Regional Planning Commission, August 2019