

Map 1 Relevant Sections: 6

Regional Overview

Dawson Planning Region

YUKON TERRITORY

0 20 40 60 80
Kilometers
1:1,100,000 (when printed on 11x17" paper)
Yukon Albers Projection, NAD83

- LEGEND**
- Dawson Planning Region
 - Protected Area (Approved or Proposed)
 - Highway
 - Secondary/seasonal road
 - First Nation Settlement Land**
 - <100 hectares
 - >100 hectares
 - Tr'ondëk Hwëch'in
 - Other First Nations
 - First Nation Traditional Territory**
 - Tr'ondëk Hwëch'in
 - First Nation of Na-cho Nyäk Dun
 - Selkirk First Nation
 - Vuntut Gwitchin First Nation
 - White River First Nation
 - Tr'ondëk Hwëch'in Administrative Area
 - Klondike Valley Land Use Plan

INSET: Areas excluded from the Dawson Planning Region
SCALE: 1:250,000

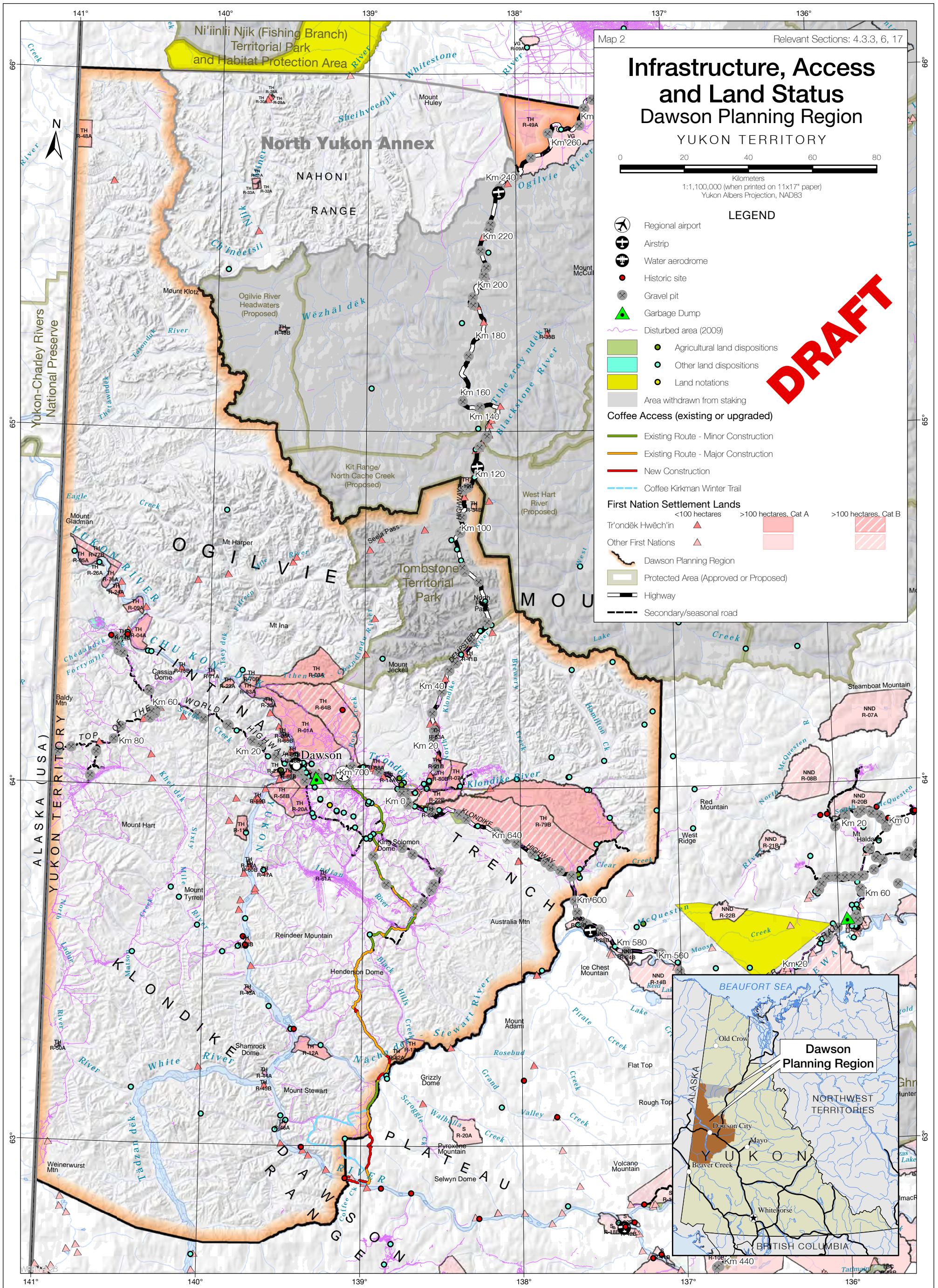
West Dawson/Sunnydale Local Area
City of Dawson
Bear Creek

DRAFT

Data sources:
Base data: Transportation, watercourses and toponomy, shaded relief (GeoYukon); parks/protected areas (GeoYukon, YLUPC, US National Parks Service); provincial boundaries (Department of Natural Resources Canada), toponymy (recompiled by YLUPC from Tr'ondëk Hwëch'in and Yukon Government)
Thematic data: Planning regions (YLUPC); First Nations settlement lands (Yukon Government, recompiled by YLUPC); traditional territories (GeoYukon); TH administrative boundary (Tr'ondëk Hwëch'in)
Data disclaimer:
 This map is a graphical representation, which depicts the approximate size, configuration and spatial relationship of known geographic features. While great care has been taken to ensure the best possible quality, this document is not intended for legal descriptions and/or to calculate precise areas, dimensions or distances. We do not accept any responsibility for errors, omissions or inaccuracies in this data. Digital copies of this map may be obtained from the Dawson Regional Planning Commission and the Yukon Land Use Planning Council websites at: dawson.planyukon.ca and www.planyukon.ca

© Dawson Regional Planning Commission, August 2019

Dawson Regional Resource Assessment Report 2019



Data sources:

Base data: Transportation, watercourses and toponymy, shaded relief (GeoYukon); parks/protected areas (GeoYukon, YLUPC, US National Parks Service); provincial boundaries (Department of Natural Resources Canada), toponymy (recompiled by YLUPC from Tr'ondëk Hwëch'in and Yukon Government)

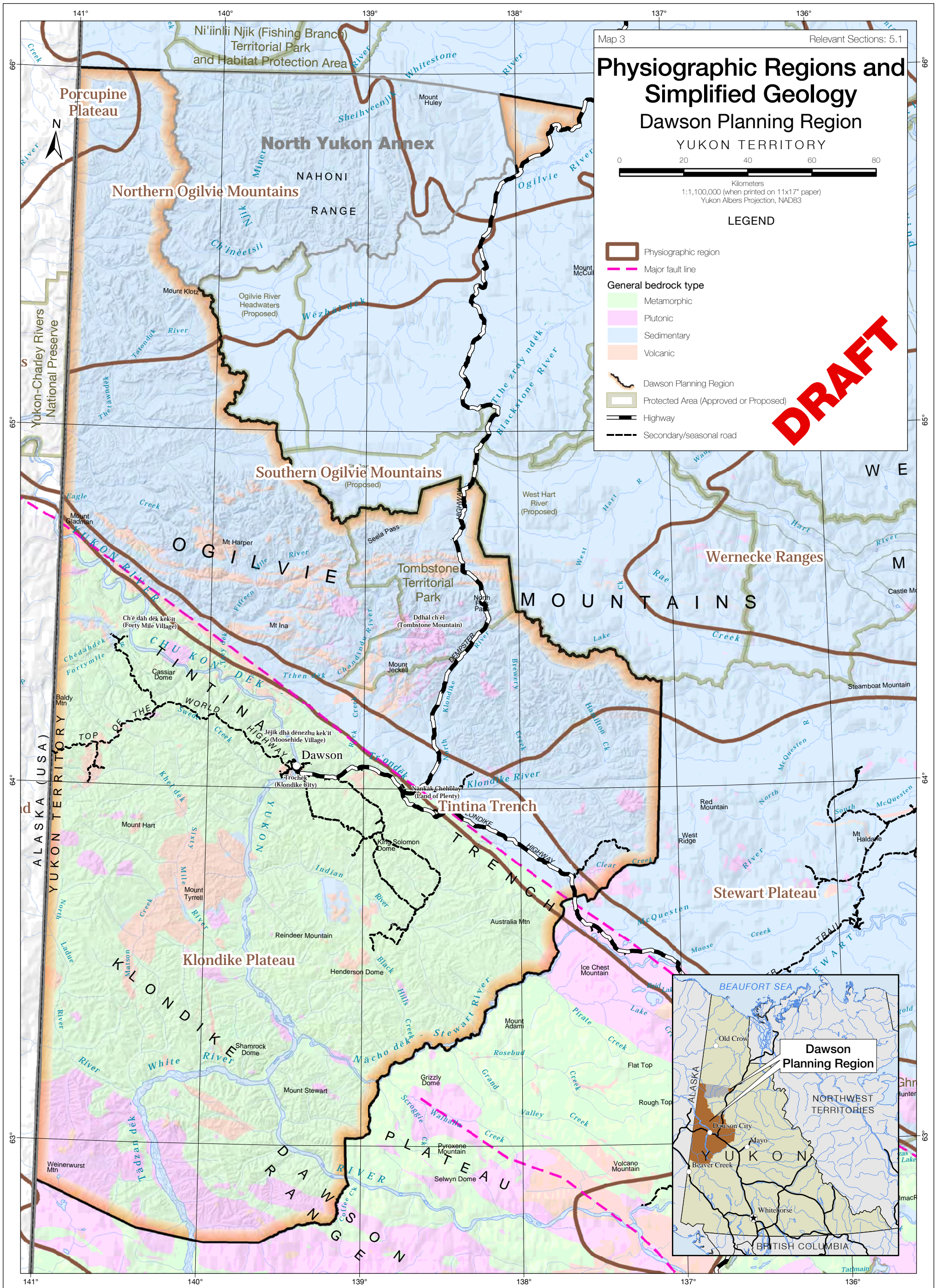
Thematic data: Areas withdrawn from staking, January 2019 (Yukon Government); land dispositions, gravel pits, kilometer posts, June 2019 (Yukon Government); disturbed areas, 2014 (Yukon Land Use Planning Council); aerodromes and historic sites from tourism public resource data, 2013 (Yukon Government)

Data disclaimer:

This map is a graphical representation, which depicts the approximate size, configuration and spatial relationship of known geographic features. While great care has been taken to ensure the best possible quality, this document is not intended for legal descriptions and/or to calculate precise areas, dimensions or distances. We do not accept any responsibility for errors, omissions or inaccuracies in this data.

Digital copies of this map may be obtained from the Dawson Regional Planning Commission and the Yukon Land Use Planning Council websites at: dawson.planyukon.ca and www.planyukon.ca

© Dawson Regional Planning Commission, August 2019



Data sources:

Base data: Transportation, watercourses and toponomy, shaded relief (GeoYukon); parks/protected areas (GeoYukon, YLUPC, US National Parks Service); provincial boundaries (Department of Natural Resources Canada), toponymy (recompiled by YLUPC from Tr'ondëk Hwëch'in and Yukon Government)

Thematic data: Geologic and physiographic features (GeoYukon)

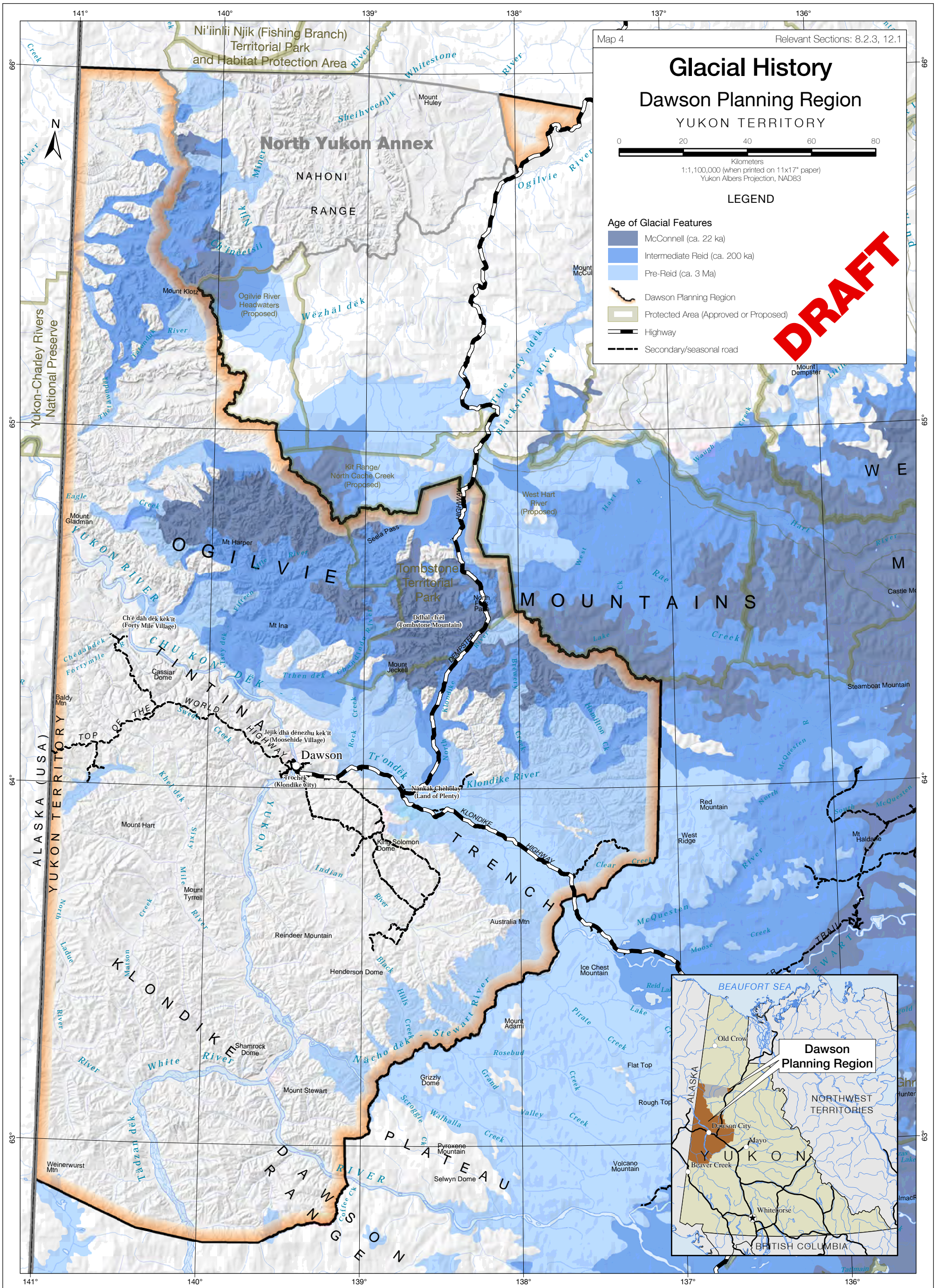
Data disclaimer:

This map is a graphical representation, which depicts the approximate size, configuration and spatial relationship of known geographic features. While great care has been taken to ensure the best possible quality, this document is not intended for legal descriptions and/or to calculate precise areas, dimensions or distances. We do not accept any responsibility for errors, omissions or inaccuracies in this data.

Digital copies of this map may be obtained from the Dawson Regional Planning Commission and the Yukon Land Use Planning Council websites at:

dawson.planyukon.ca and www.planyukon.ca

© Dawson Regional Planning Commission, August 2019



Data sources:

Base data: Transportation, watercourses and toponomy, shaded relief (GeoYukon); parks/protected areas (GeoYukon, YLUPC, US National Parks Service); provincial boundaries (Department of Natural Resources Canada), toponymy (recompiled by YLUPC from Tr'ondëk Hwëch'in and Yukon Government)

Thematic data: Glacial limits (GeoYukon)

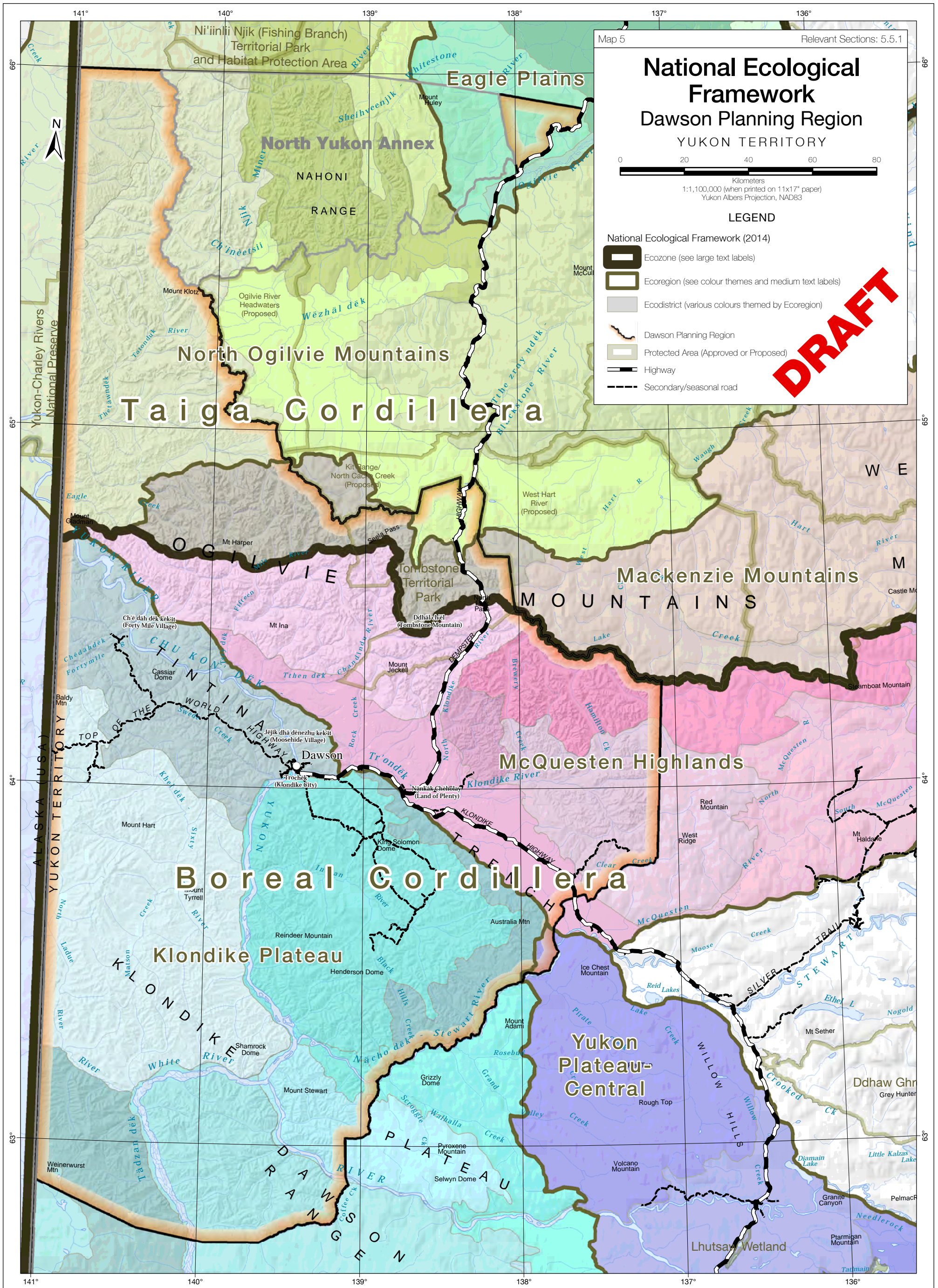
Data disclaimer:

This map is a graphical representation, which depicts the approximate size, configuration and spatial relationship of known geographic features. While great care has been taken to ensure the best possible quality, this document is not intended for legal descriptions and/or to calculate precise areas, dimensions or distances. We do not accept any responsibility for errors, omissions or inaccuracies in this data.

Digital copies of this map may be obtained from the Dawson Regional Planning Commission and the Yukon Land Use Planning Council websites at:

dawson.planyukon.ca and www.planyukon.ca

© Dawson Regional Planning Commission, August 2019



Data sources:

Base data: Transportation, watercourses and toponymy, shaded relief (GeoYukon); parks/protected areas (GeoYukon, YLUPC, US National Parks Service); provincial boundaries (Department of Natural Resources Canada), toponymy (recompiled by YLUPC from Tr'ondëk Hwëch'in and Yukon Government)

Thematic data: National Ecological Framework - Yukon Update (Government of Yukon, 2014); US Ecoregions (US Environmental Protection Agency, 2012)

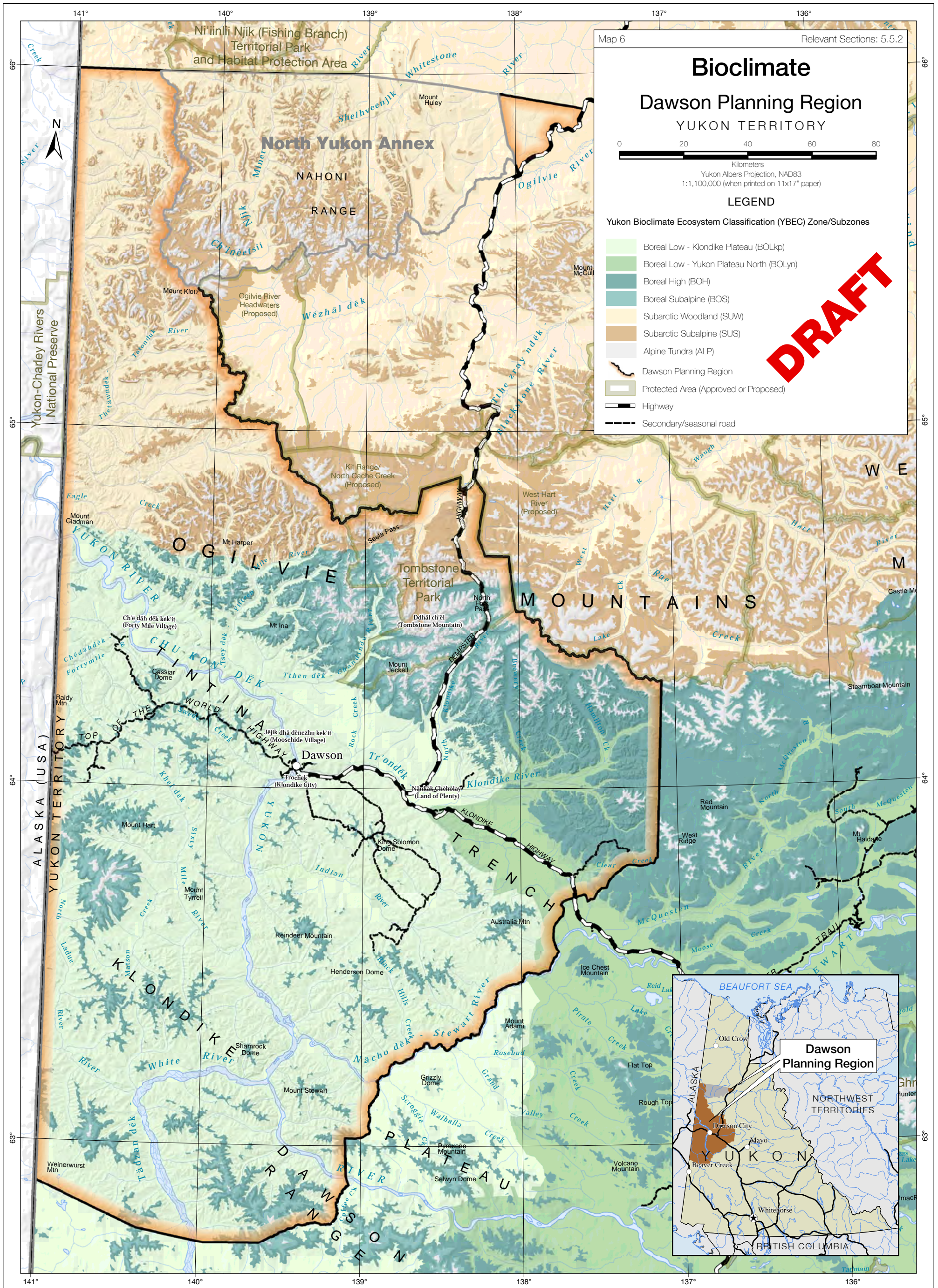
Data disclaimer:

This map is a graphical representation, which depicts the approximate size, configuration and spatial relationship of known geographic features. While great care has been taken to ensure the best possible quality, this document is not intended for legal descriptions and/or to calculate precise areas, dimensions or distances. We do not accept any responsibility for errors, omissions or inaccuracies in this data.

Digital copies of this map may be obtained from the Dawson Regional Planning Commission and the Yukon Land Use Planning Council websites at:

dawson.planyukon.ca and www.planyukon.ca

© Dawson Regional Planning Commission, August 2019



Data sources:

Base data: Transportation, watercourses and toponomy, shaded relief (GeoYukon); parks/protected areas (GeoYukon, YLUPC, US National Parks Service); provincial boundaries (Department of Natural Resources Canada), toponymy (recompiled by YLUPC from Tr'ondëk Hwëch'in and Yukon Government)

Thematic data: Yukon Bioclimate Ecosystem Classification (YBEC) zones and subzones (Government of Yukon, interim release v1.1 September 2018)

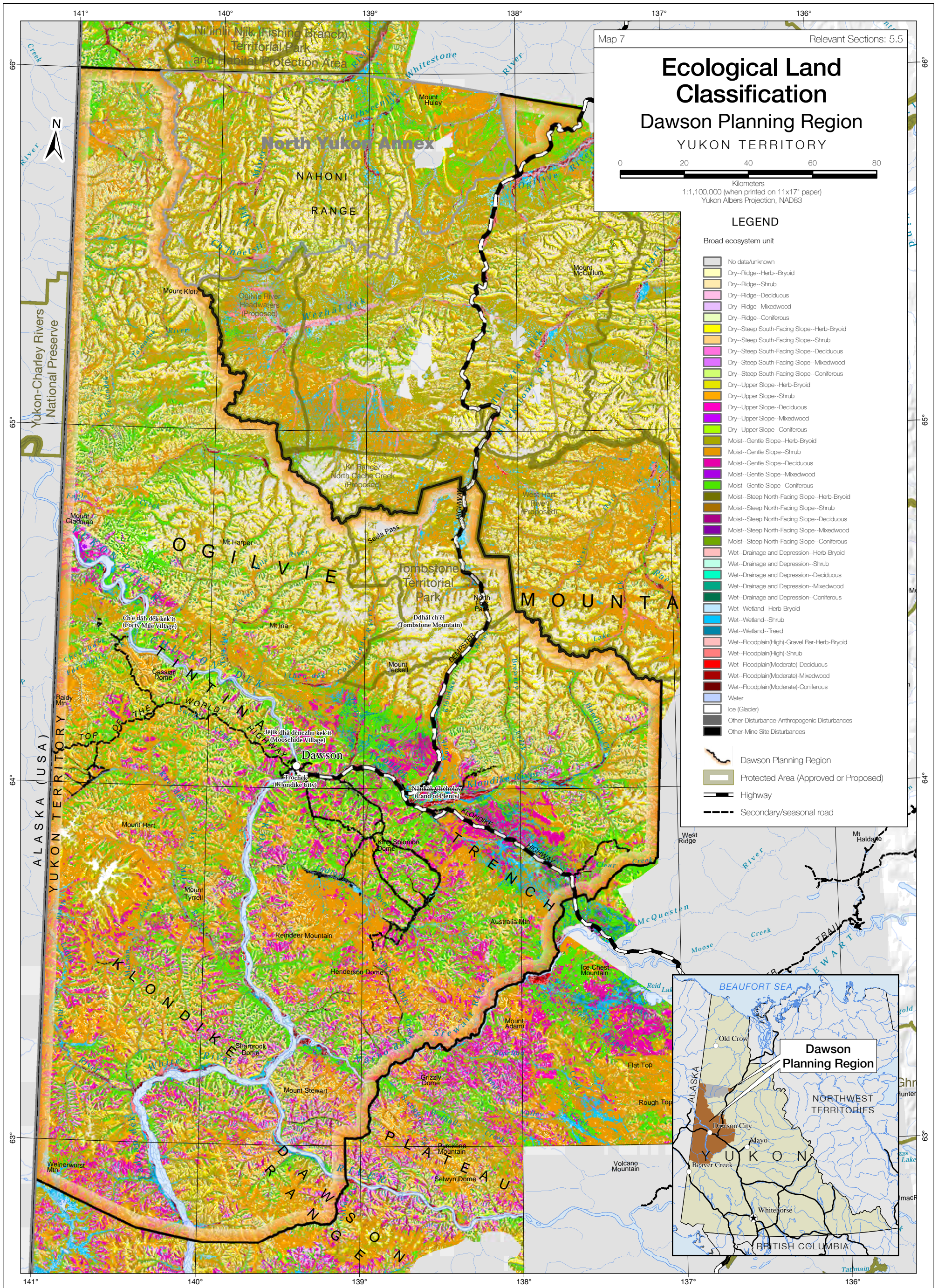
Data disclaimer:

This map is a graphical representation, which depicts the approximate size, configuration and spatial relationship of known geographic features. While great care has been taken to ensure the best possible quality, this document is not intended for legal descriptions and/or to calculate precise areas, dimensions or distances. We do not accept any responsibility for errors, omissions or inaccuracies in this data.

Digital copies of this map may be obtained from the Dawson Regional Planning Commission and the Yukon Land Use Planning Council websites at:

dawson.planyukon.ca and www.planyukon.ca

© Dawson Regional Planning Commission, August 2019



Data sources:

Base data: Transportation, watercourses and toponymy, shaded relief (GeoYukon); parks/protected areas (GeoYukon, YLUPC, US National Parks Service); provincial boundaries (Department of Natural Resources Canada), toponymy (recompiled by YLUPC from Tr'ondëk Hwëch'in and Yukon Government)

Thematic data: Ecological Land Classification:

Grods, J., S.R. Francis, J.C. Meikle and S. Lapointe. 2012. West-central broad ecosystems (Version 1.1). Spatial data created for Environment, Government of Yukon by Makonis Consulting Ltd. and Associates, West Kelowna, BC.

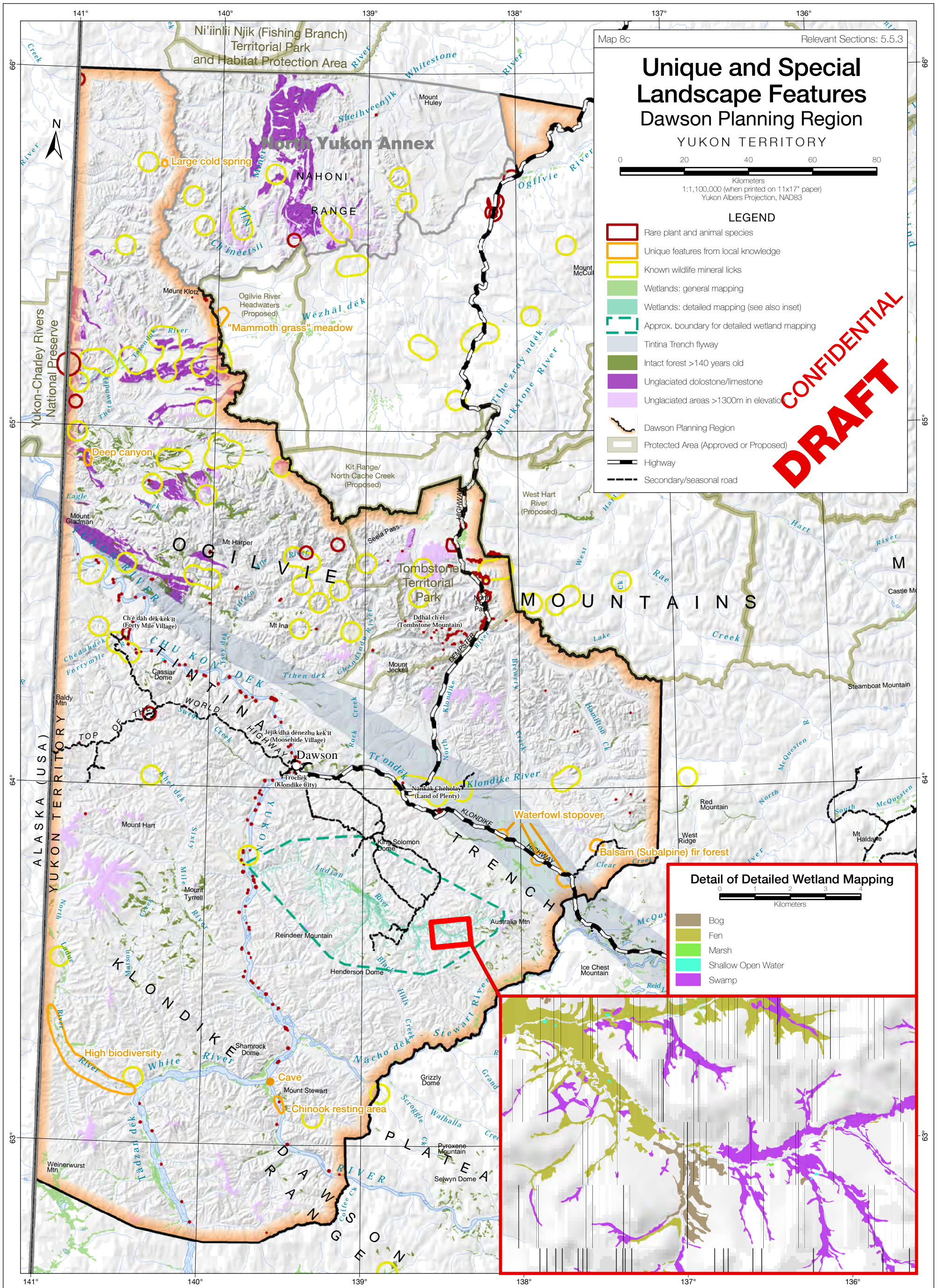
Data disclaimer:

This map is a graphical representation, which depicts the approximate size, configuration and spatial relationship of known geographic features. While great care has been taken to ensure the best possible quality, this document is not intended for legal descriptions and/or to calculate precise areas, dimensions or distances. We do not accept any responsibility for errors, omissions or inaccuracies in this data.

Digital copies of this map may be obtained from the Dawson Regional Planning Commission and the Yukon Land Use Planning Council websites at:

dawson.planyukon.ca and www.planyukon.ca

© Dawson Regional Planning Commission, August 2019



Data sources:

Base data: Transportation, watercourses and toponomy, shaded relief (GeoYukon); parks/protected areas (GeoYukon, YLUPC, US National Parks Service); provincial boundaries (Department of Natural Resources Canada), toponomy (recompiled by YLUPC from Tr'ondëk Hwëch'in and Yukon Government)

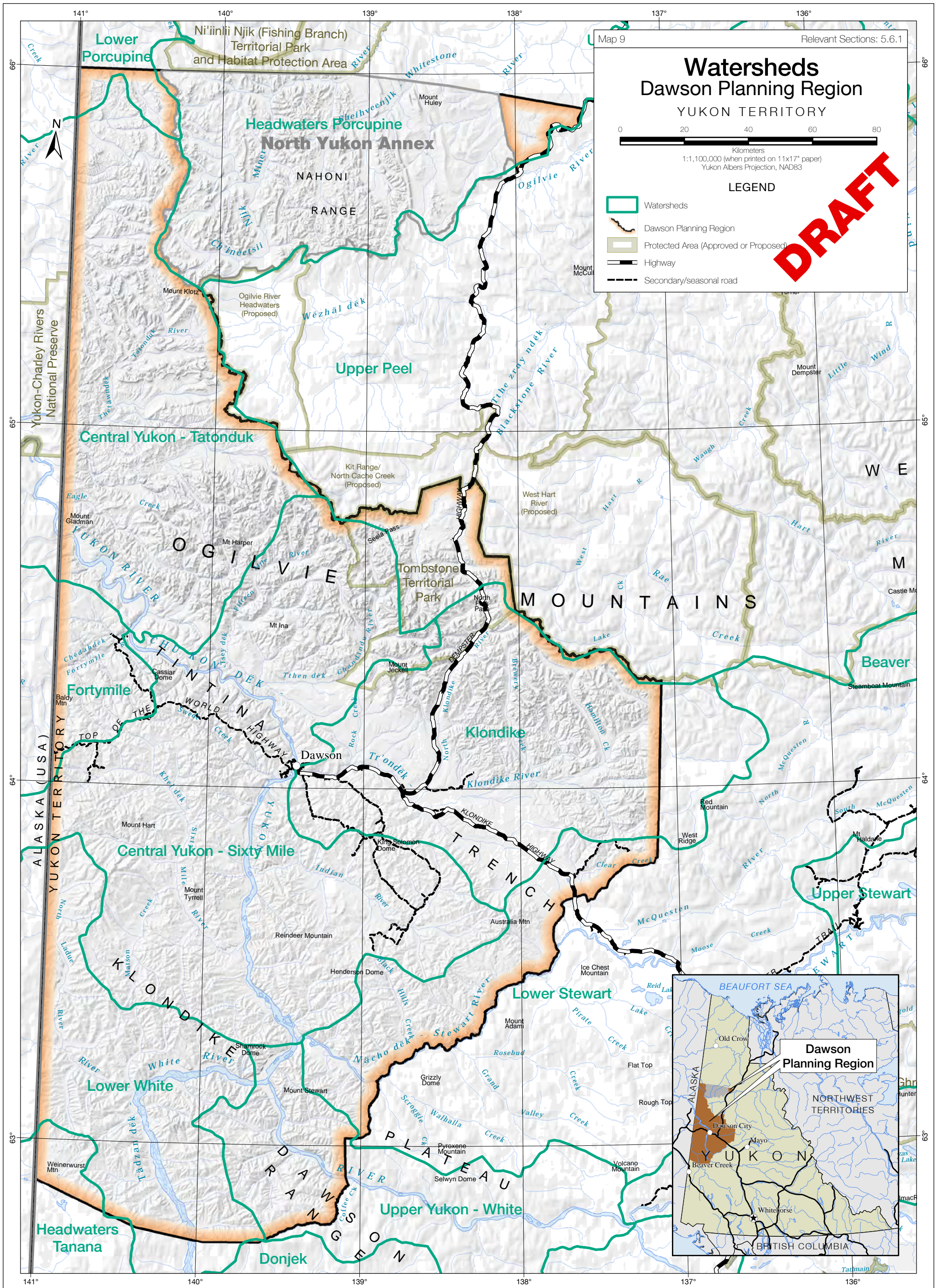
Thematic data: Rare species (Yukon Conservation Data Centre, 2018); Local knowledge (gathered by Yukon Government from 18 individuals with extensive knowledge of wildlife in the Dawson Land Use Planning Region, 2012); Mineral licks (Yukon Wildlife Key Area Inventory, Government of Yukon, 2012); General wetlands - 1:50k (Yukon Government, 2018); Detailed wetlands - 1:10k (CryoGeographic Consulting, 2018, for Yukon Government); Tintina Trench (from Yukon Government's Physiographic Regions, 2018); Intact old forest (Yukon Government, 2018); Unglaciated features (Yukon Government, 2012)

Data disclaimer:

This map is a graphical representation, which depicts the approximate size, configuration and spatial relationship of known geographic features. While great care has been taken to ensure the best possible quality, this document is not intended for legal descriptions and/or to calculate precise areas, dimensions or distances. We do not accept any responsibility for errors, omissions or inaccuracies in this data.

Digital copies of this map may be obtained from the Dawson Regional Planning Commission and the Yukon Land Use Planning Council websites at:

dawson.planyukon.ca and www.planyukon.ca



Data sources:

Base data: Transportation, watercourses and toponomy, shaded relief (GeoYukon); parks/protected areas (GeoYukon, YLUPC, US National Parks Service); provincial boundaries (Department of Natural Resources Canada), toponomy (recompiled by YLUPC from Tr'ondëk Hwëch'in and Yukon Government)

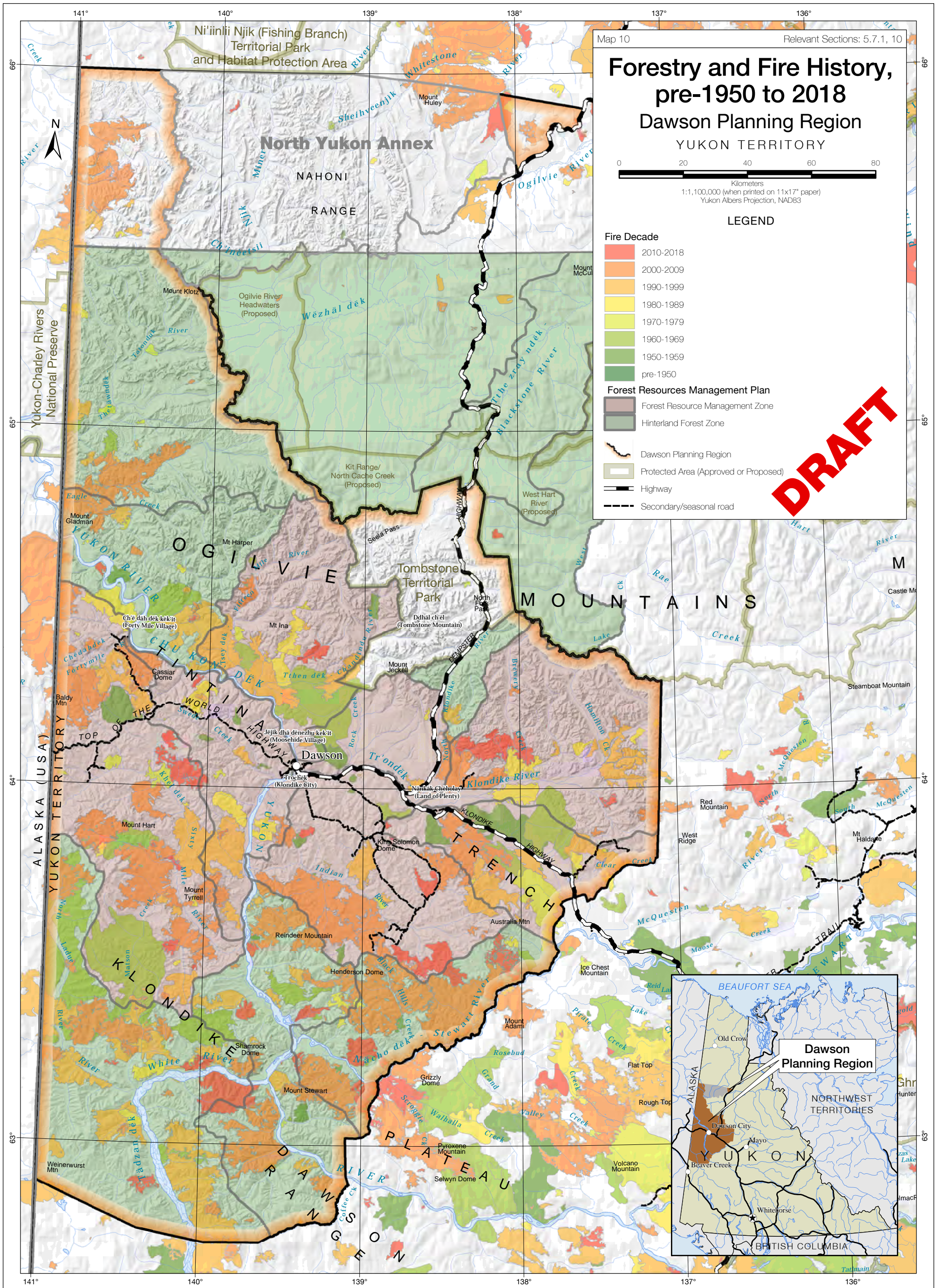
Thematic data: 1:1M Watersheds (Yukon Government)

Data disclaimer:

This map is a graphical representation, which depicts the approximate size, configuration and spatial relationship of known geographic features. While great care has been taken to ensure the best possible quality, this document is not intended for legal descriptions and/or to calculate precise areas, dimensions or distances. We do not accept any responsibility for errors, omissions or inaccuracies in this data.

Digital copies of this map may be obtained from the Dawson Regional Planning Commission and the Yukon Land Use Planning Council websites at: dawson.planyukon.ca and www.planyukon.ca

© Dawson Regional Planning Commission, August 2019



Map 10 Relevant Sections: 5.7.1, 10

Forestry and Fire History, pre-1950 to 2018

Dawson Planning Region

YUKON TERRITORY

0 20 40 60 80
Kilometers
1:1,100,000 (when printed on 11x17" paper)
Yukon Albers Projection, NAD83

LEGEND

Fire Decade

- 2010-2018
- 2000-2009
- 1990-1999
- 1980-1989
- 1970-1979
- 1960-1969
- 1950-1959
- pre-1950

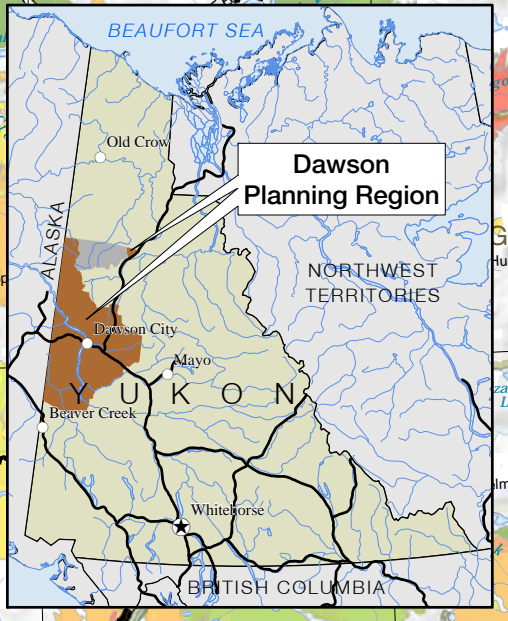
Forest Resources Management Plan

- Forest Resource Management Zone
- Hinterland Forest Zone

Other Features

- Dawson Planning Region
- Protected Area (Approved or Proposed)
- Highway
- Secondary/seasonal road

DRAFT



© Dawson Regional Planning Commission, August 2019

Data sources:
Base data: Transportation, watercourses and toponomy, shaded relief (GeoYukon); parks/protected areas (GeoYukon, YLUPC, US National Parks Service); provincial boundaries (Department of Natural Resources Canada), toponymy (recompiled by YLUPC from Tr'ondëk Hwëch'in and Yukon Government)
Thematic data: Fire history and forest management areas, April 2019 (Yukon Government)
Data disclaimer:
 This map is a graphical representation, which depicts the approximate size, configuration and spatial relationship of known geographic features. While great care has been taken to ensure the best possible quality, this document is not intended for legal descriptions and/or to calculate precise areas, dimensions or distances. We do not accept any responsibility for errors, omissions or inaccuracies in this data. Digital copies of this map may be obtained from the Dawson Regional Planning Commission and the Yukon Land Use Planning Council websites at: dawson.planyukon.ca and www.planyukon.ca