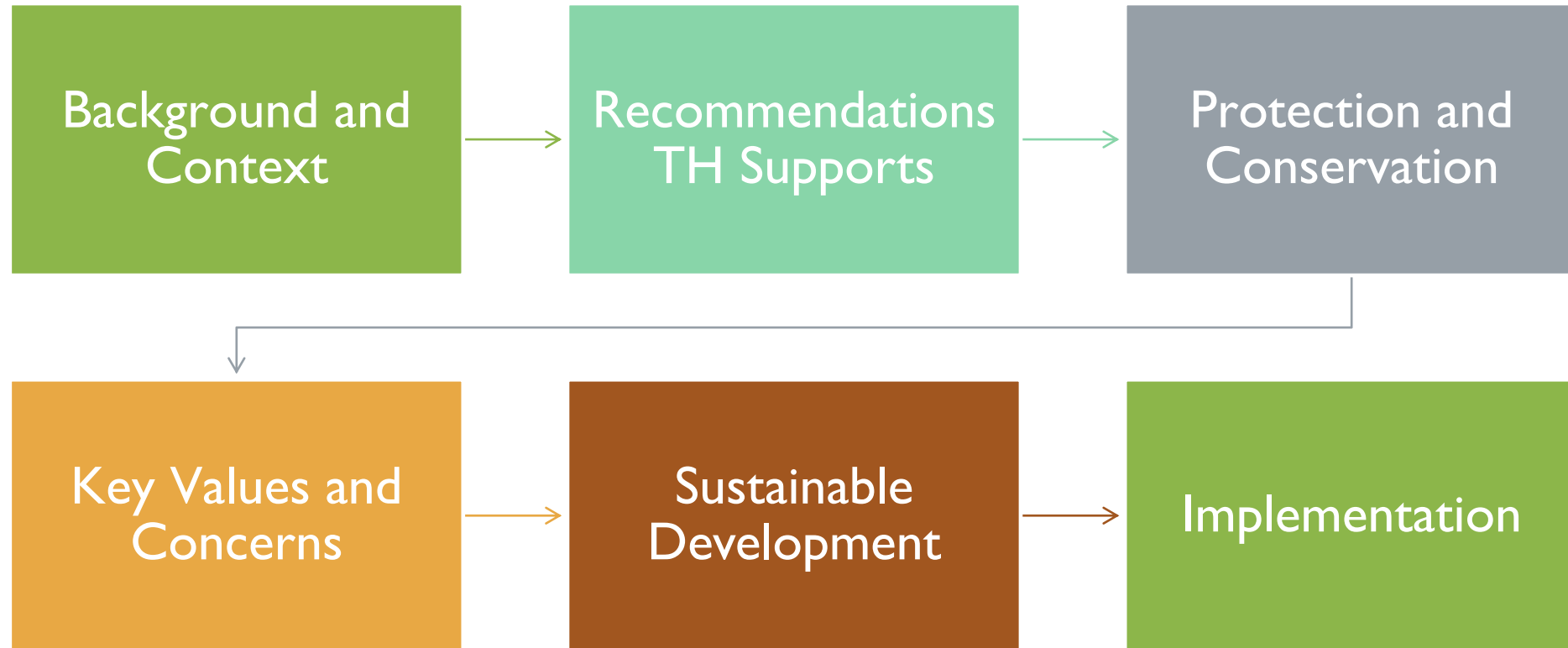


TR'ONDĚK HWĚCH'IN PROPOSED MODIFICATIONS ON THE DAWSON RECOMMENDED PLAN

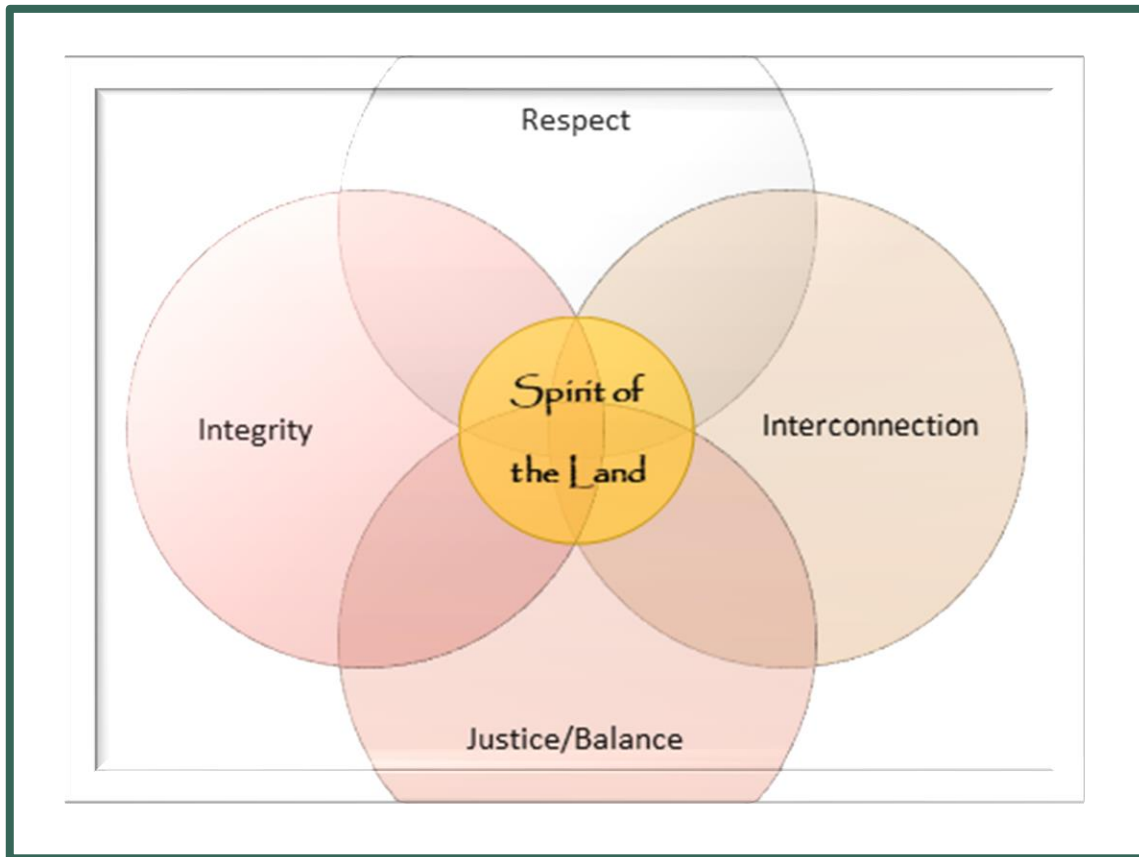
Tim Gerberding & Katie Fraser, TH-SLC Representatives

January 22, 2025

OVERVIEW



WE ARE DĚNEZHU



- Maintain a reciprocal relationship with the Land
- Demonstrate humility, moderation, and self-control and giving back
- Respect the world of those we have treaty with, caribou, salmon, and acting as their voice with partner governments
- Practice ceremony and protocol to reconcile our love for our land with our hunting way of life
- It is Tr'ondëk Hwëch'in responsibility, as set out through traditional law, to protect and care for the lands and waters within their traditional territory;
- The land and everything it provides is a part of peoples identity, culture, beliefs, traditions, and practices;
- It is not just about today, but about future generations;



TR'ONDĚK HWĚCH'IN FINAL AGREEMENT

Whereas the parties to this Agreement have promised to:

- Recognize and **protect** a way of life that is based on an economic and **spiritual relationship between Tr'ondëk Hwëch'in and the land**; and
- Recognize and **enhance**, to the extent practicable, the **traditional economy** of Yukon Indian People and their **special relationship** with the wilderness Environment; and
- Ensure that social, cultural, economic and environmental **policies** are applied to the **management, protection and use** of land, water and resources in an integrated and coordinated manner so as to ensure **Sustainable Development**".

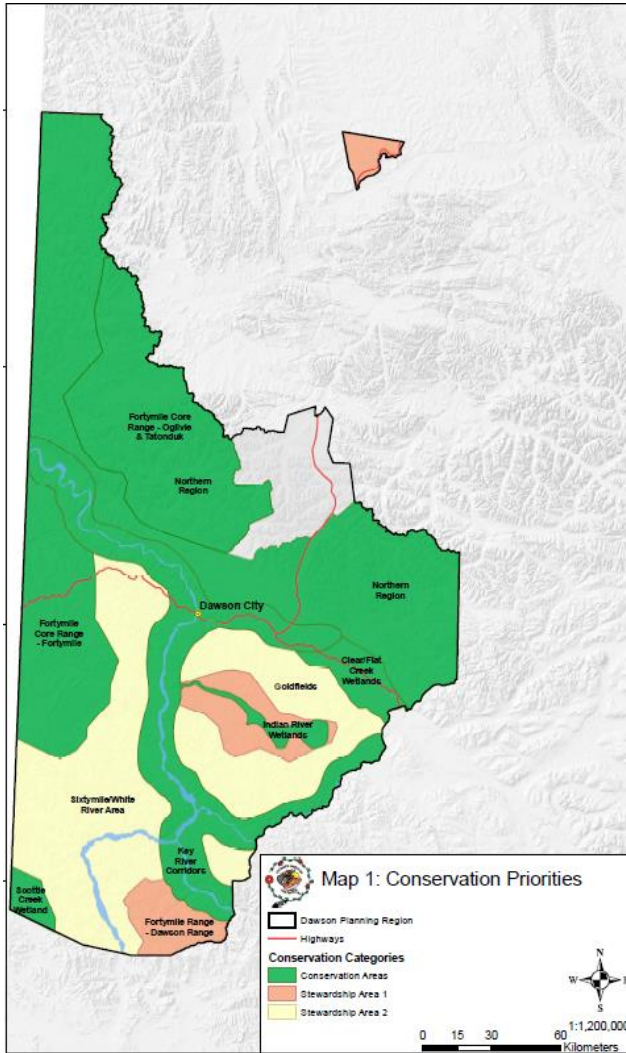
CHAPTER 11 LAND USE PLANNING OBJECTIVES

- *"to ensure that social, cultural, economic and environmental policies are applied to the management, protection and use of land, water, and resources in an **integrated and coordinated manner** so as to ensure "Sustainable Development"*
- The *Placer Mining Act* is old and outdated
- Land use planning is not a stand-alone process
- It's not possible to manage land, water and resources **"in an integrated and coordinated manner"** without addressing legislative and regulatory issues

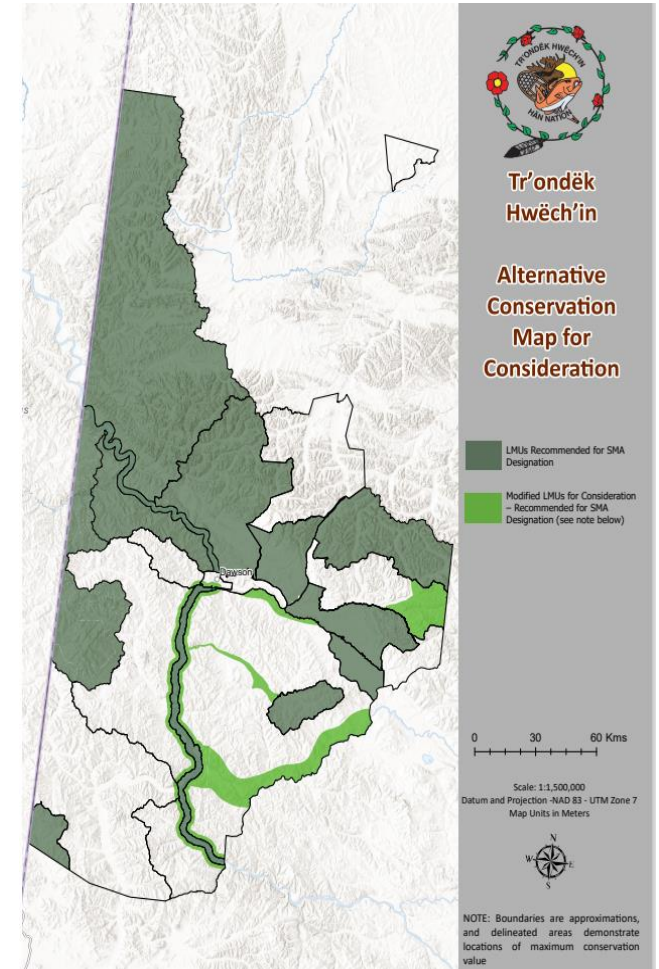
PREVIOUS FEEDBACK

- Throughout the planning process TH has outlined a consistent vision for land use in the Dawson planning region:

We want to moderate the pace and intensity of mining and set important lands aside from future industrial use



**Ninänkäk hozo wëk'ätr'ënòhcha
(We Take Good Care of Our
Land)**

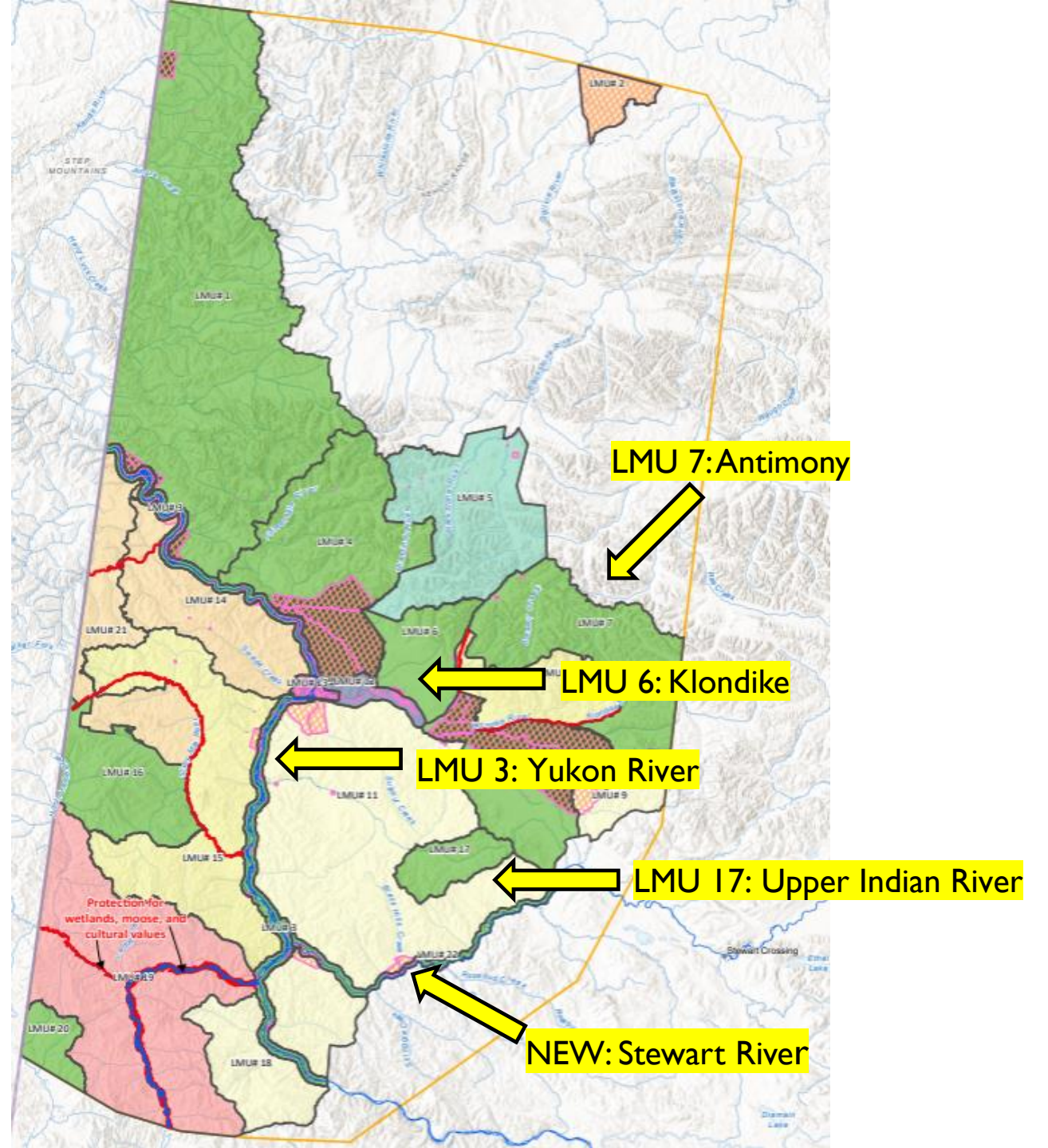


**Alternative Conservation Map
for Consideration (Draft Plan)**

RECOMMENDATIONS TH SUPPORTS

-
- The **vision** and **goals** of the Recommended Plan
 - The cumulative effects thresholds
 - LMU boundaries for the vast majority, with modifications to LMU 16, and an additional LMU for the Stewart River Corridor
 - Most of the SMA and ISA land use designations with some proposed modifications (7, 17, 6, 3)

AREAS
RECOMMENDED
FOR ADDED
PROTECTION



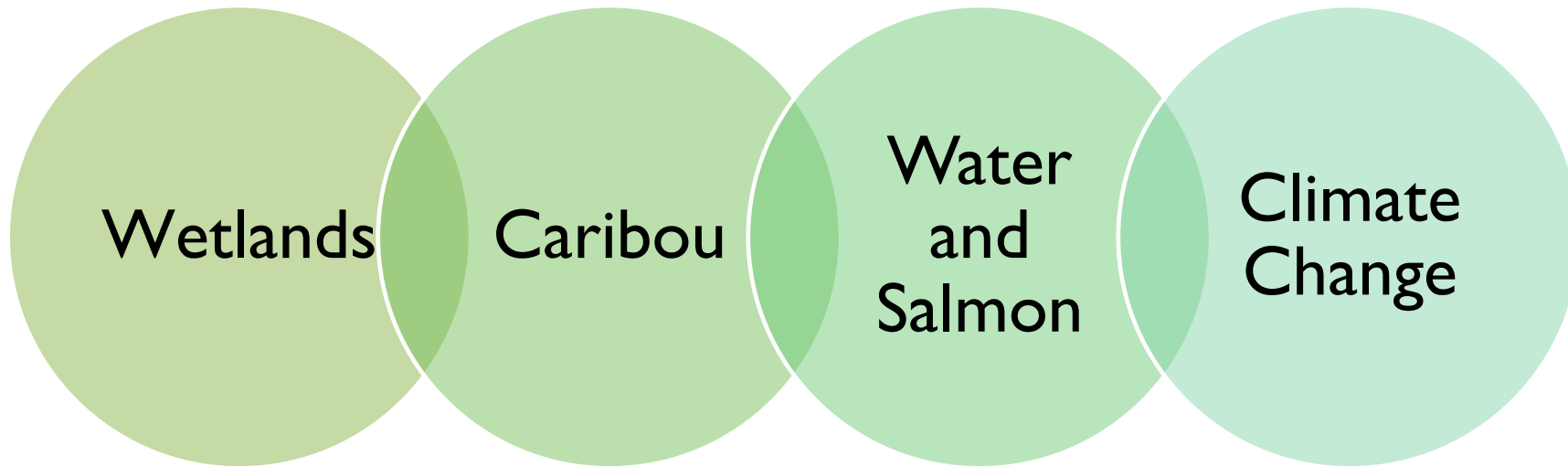
WHY?

| | |
|------------------------|---|
| Antimony | Critical caribou habitat missing from LMU and ISA I status offers inadequate protection |
| Klondike | Important salmon bearing streams and moose habitat, currently unaddressed in Recommended Plan |
| Yukon River | The entire watercourse is culturally and environmentally significant, deserving of protection |
| Upper Indian River | Undisturbed wetlands with high development already exceeding Recommended Plan thresholds |
| Stewart River Corridor | Critical waterway for TH and NND stewardship, currently unaddressed in Recommended Plan |

INTERIM PROTECTIONS

-
- The Government of Yukon's submission requests that interim withdrawals be removed from the Plan in areas outside of SMAs
 - **TH strongly disagrees with that proposal**
 - **TH supports interim protection measures**
 - We don't yet know which areas will ultimately be SMAs. To remove interim protection on certain areas now pre-supposes what the Final Approved Plan will look like.
 - To remove withdrawals prior to finalizing the Plan could open development in areas that should not be developed.

KEY VALUES AND CONCERNS

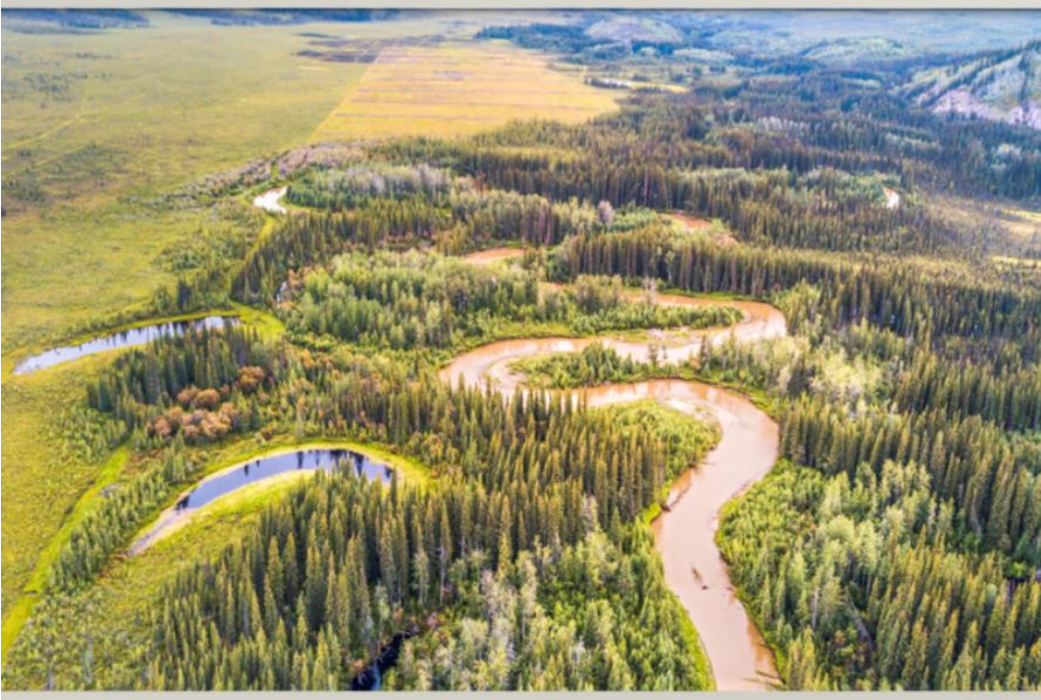


WETLANDS

“I used to trap on the Indian River with my husband. Beautiful, beautiful country. Used to hunt for beaver. Now I go back, I get lost. Where’s the road? So many roads this way, that way, they go around in a circle. They just damage the ground; all they do is look for that yellow thing. Sometimes I get mad when I go over there.” – Elder Peggy Kormendy



WETLANDS



- TH wants to protect ALL wetlands in the Dawson planning region, but supports Recommended Plan directions generally
- TH supports the identification of Flat Creek, Scottie Creek, and Ladue River Wetlands as Wetlands of Special Importance (WSI)
 - **But WSIs should be permanently protected and withdrawn from mineral staking**
 - **WSI standards should apply to existing claims**
 - **Boundaries need to be clarified**
- Once destroyed, permafrost cannot be restored. Shallow open water wetlands may be good for moose but do little to address climate change.
- **Upper Indian River LMU 17 and "Ladue River wetlands" should be SMAs**

CARIBOU



- Caribou has high cultural and ecological importance in the region
- Caribou "overlay" a misnomer – entire planning region is a "Caribou stewardship" area, but directions should be different for different herds
- **LMU boundaries 7/8 and 16/21 must align with critical caribou habitat and migration corridors, NOT mineral claims**

WATER AND SALMON



Artwork by Darcy Tara MacDiarmid

- Salmon is extremely important to TH
 - Culturally, economically, environmentally
 - An indicator of the broader state of the ecosystem.
- Maintaining quantity and quality of water in the region is paramount for sustaining populations of salmon.
- **There must be a planning objective for Salmon and active support of the Yukon River Chinook Salmon Rebuilding Plans.**
- **A baseline data collection plan must be developed to ensure salmon habitat is not damaged due to lack of information.**
- **Adequate baseline data must be acquired prior to activity in streams with salmon activity.**

CLIMATE CHANGE



- Climate change is the existential crisis of our time.
 - Our salmon are severely impacted by warming water in the Yukon River and its tributaries
 - Our lands are heaving and sloughing
 - Our rivers and streams don't freeze like they used to
- **The Dawson Regional Land Plan should contain bold and far-reaching provisions to address this crisis.**
 - Should be a guiding principle in the Final Recommended Plan
 - Considered in CE framework
 - Protection of wetlands and large intact ecosystems

WHAT DOES IT MEAN TO BE SUSTAINABLE?



“Sustainable Development” means beneficial socio-economic change that does not undermine the ecological and social systems upon which communities and societies are dependent (THFA, page 8)

Positive socio-economic growth that upholds Tr’ondëk Hwëch’in’s social, cultural, and spiritual way of life and well-being on the land



HOW TO ACHIEVE SUSTAINABLE DEVELOPMENT

- Strict requirements for Proponents to submit adequate baseline data
- Cumulative effects thresholds that protect important values
 - **TH supports the Recommended Plan thresholds**
- Reclamation standards
- Access management plans developed, and approved, **jointly** by the Parties
 - **TH supports the Recommended Plan access provisions for LMUs 1 and 7**
 - **TH does not support YG's proposal for "working to reach consensus" on access management plans in LMUs 1 and 7, with the existing regulatory regime applying if no access management plan is approved**
- “Critical” minerals:
 - Does not mean promote 'all' mining
 - Need to ensure mining for “critical” minerals is done *differently*
 - aligned with sustainable development (as defined by the THFA) and co-management

IMPLEMENTATION

- **Implementation responsibilities MUST be shared amongst the Parties on public lands**
- Implementation takes time, it is unreasonable to expect the Plan to be ready for full implementation on day 1 of Plan approval
 - Once approved, the Peel Plan Implementation Committee was established, it was until much later than an Implementation Plan was completed
 - After 6 years, we are still working on implementing key requirements under the Peel Plan
- TH supports phased implementation, but it is important that the most important recommendations are acted on immediately (OICs, tracking of disturbance, conformity determinations, proponent requirements)
- **A Commission must continue to exist to conduct conformity checks**

CO-MANAGEMENT

- The Supreme Court of Canada has confirmed that First Nation participation in the management of public resources is an essential part of the Treaty bargain.
 - *"Under the Yukon treaties, the Yukon First Nations surrendered their Aboriginal rights in almost 484,000 square kilometres, roughly the size of Spain, in exchange for defined treaty rights in respect of land tenure and a quantum of settlement land (41,595 square kilometres), access to Crown lands, fish and wildlife harvesting, heritage resources, financial compensation, and participation in the management of public resources" (underline added).*
 - *It is a clear objective of Chapter 11 to ensure First Nations meaningfully participate in land use management in their traditional territories."*
- **The Final Recommended Plan should clearly reflect the concept of co-management of public lands, waters and resources in the Dawson planning region.**

WE ARE **DĚNEZHU**.
THE PEOPLE OF THIS LAND.

WE ARE **TR'ONDĚK HWĚCH'IN**.
THE PEOPLE OF THIS RIVER.

Māhsı̇ cho

