

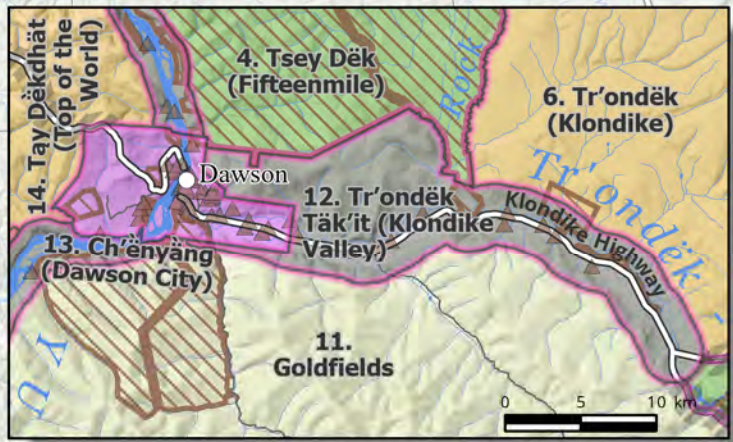
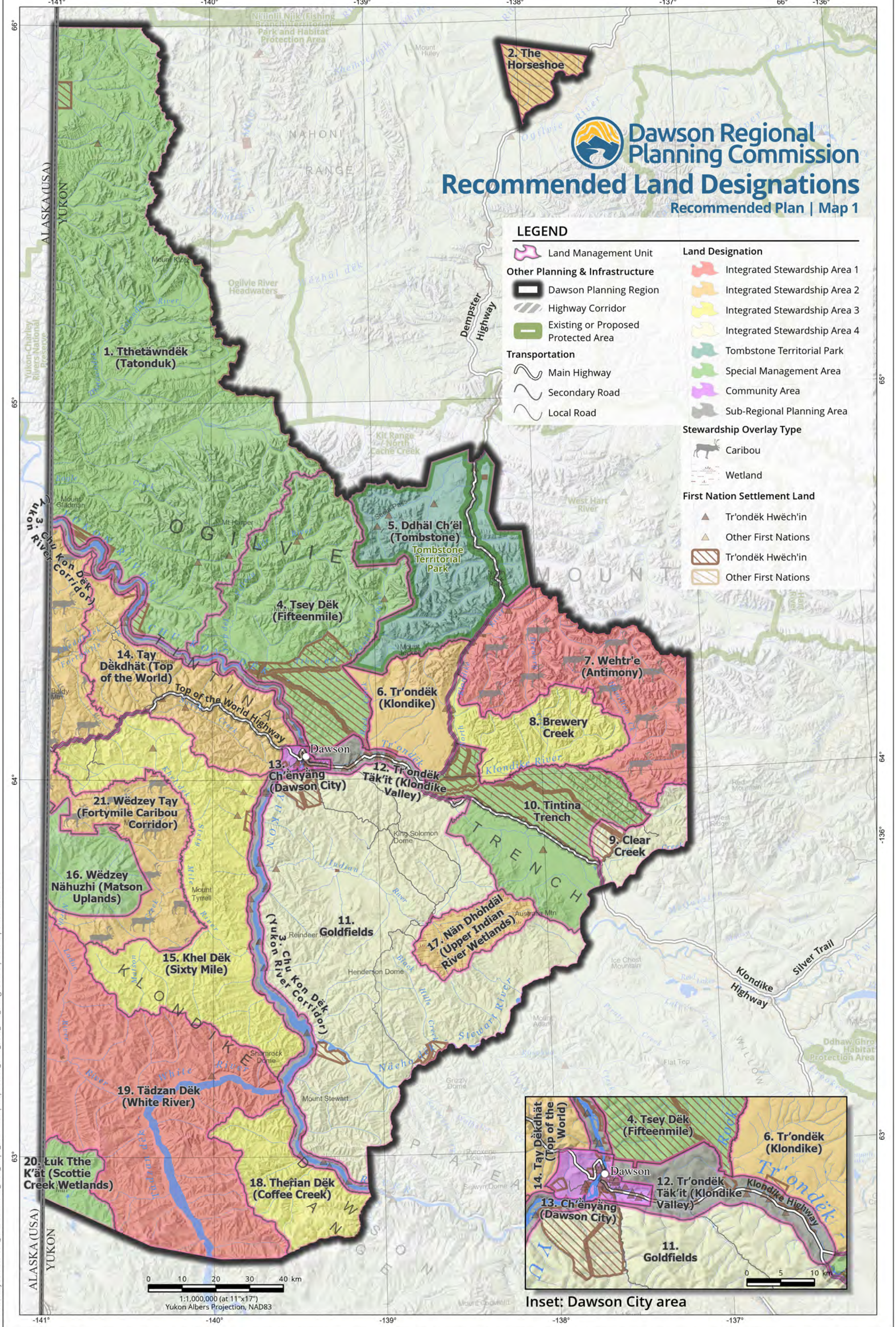
# Dawson Regional Planning Commission

## Recommended Land Designations

Recommended Plan | Map 1

### LEGEND

- Land Management Unit
- Dawson Planning Region
- Highway Corridor
- Existing or Proposed Protected Area
- Main Highway
- Secondary Road
- Local Road
- Integrated Stewardship Area 1
- Integrated Stewardship Area 2
- Integrated Stewardship Area 3
- Integrated Stewardship Area 4
- Tombstone Territorial Park
- Special Management Area
- Community Area
- Sub-Regional Planning Area
- Caribou
- Wetland
- Tr'ondëk Hwëch'in
- Other First Nations
- Tr'ondëk Hwëch'in
- Other First Nations

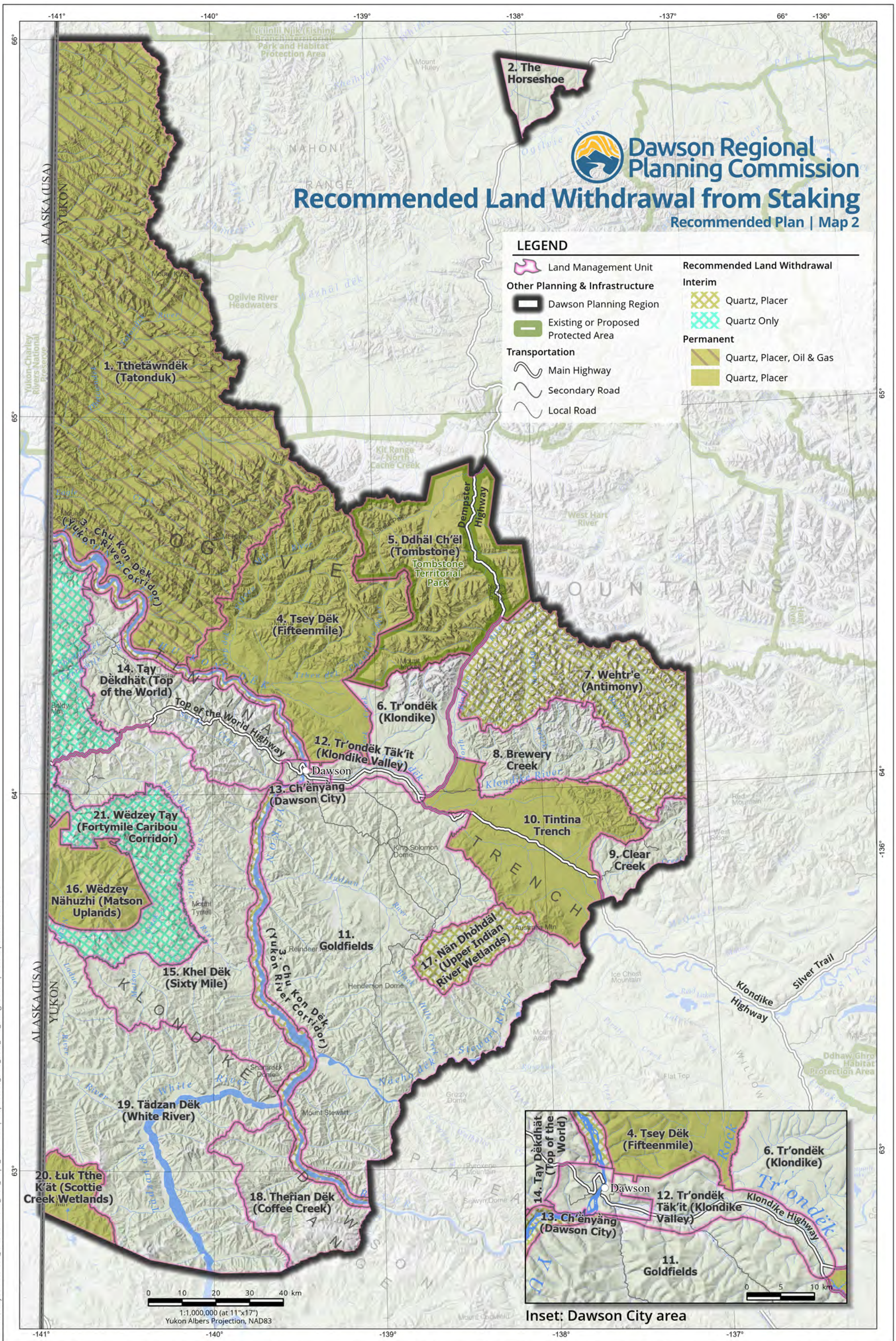


Inset: Dawson City area

0 10 20 30 40 km  
 1:1,000,000 (at 11"x17")  
 Yukon Albers Projection, NAD83

File & Layout: Dawson\_Recommended\_Plan\_Maps\_20211223 | Map01to08\_LMU\_Data\_and\_Designations | Date Exported: 2022-06-15

**Data sources:** Maps in this series includes base and thematic data provided by NRCan, GeoYukon (Yukon Government), Tr'ondëk Hwëch'in Government, US National Parks Service, Ducks Unlimited Canada, YLUPC, NYPC, or DRPC. **Data disclaimer:** This map is a graphical representation depicting the approximate size, configuration, and spatial relationship of geographic features. Some datasets have specific disclaimers available from the data provider. While great care has been taken to ensure the best possible quality, this document is neither intended for legal descriptions nor to calculate precise areas, dimensions, or distances. It is possible for errors, omissions, and inaccuracies occur in these data which is beyond our control. Wildlife Key Areas (WKA) are compiled by the Yukon Department of Environment WKA Inventory Program (2014 and 2019), against 1:250,000 NTDB from various data sources. Key Areas are based on observed locations of wildlife at key times of year, not on habitat assessment. With new information, boundaries and designations of Key Areas can change and additional Key Areas can be identified. Furthermore, Key Areas are not the only sites important for wildlife. Other information sources can identify other sites important for reasons outside the scope of the WKA Inventory Program. Updates to Key Areas occur only periodically. For the most current information, please consult with the Regional Biologist for your area of interest. If you have questions or would like to contribute to the WKA database, please contact the WKA Inventory Program. Digital copies of this map may be obtained from the Dawson Regional Planning Commission and the Yukon Land Use Planning Council websites at: [dawson.planyukon.ca](http://dawson.planyukon.ca) and [www.planyukon.ca](http://www.planyukon.ca)



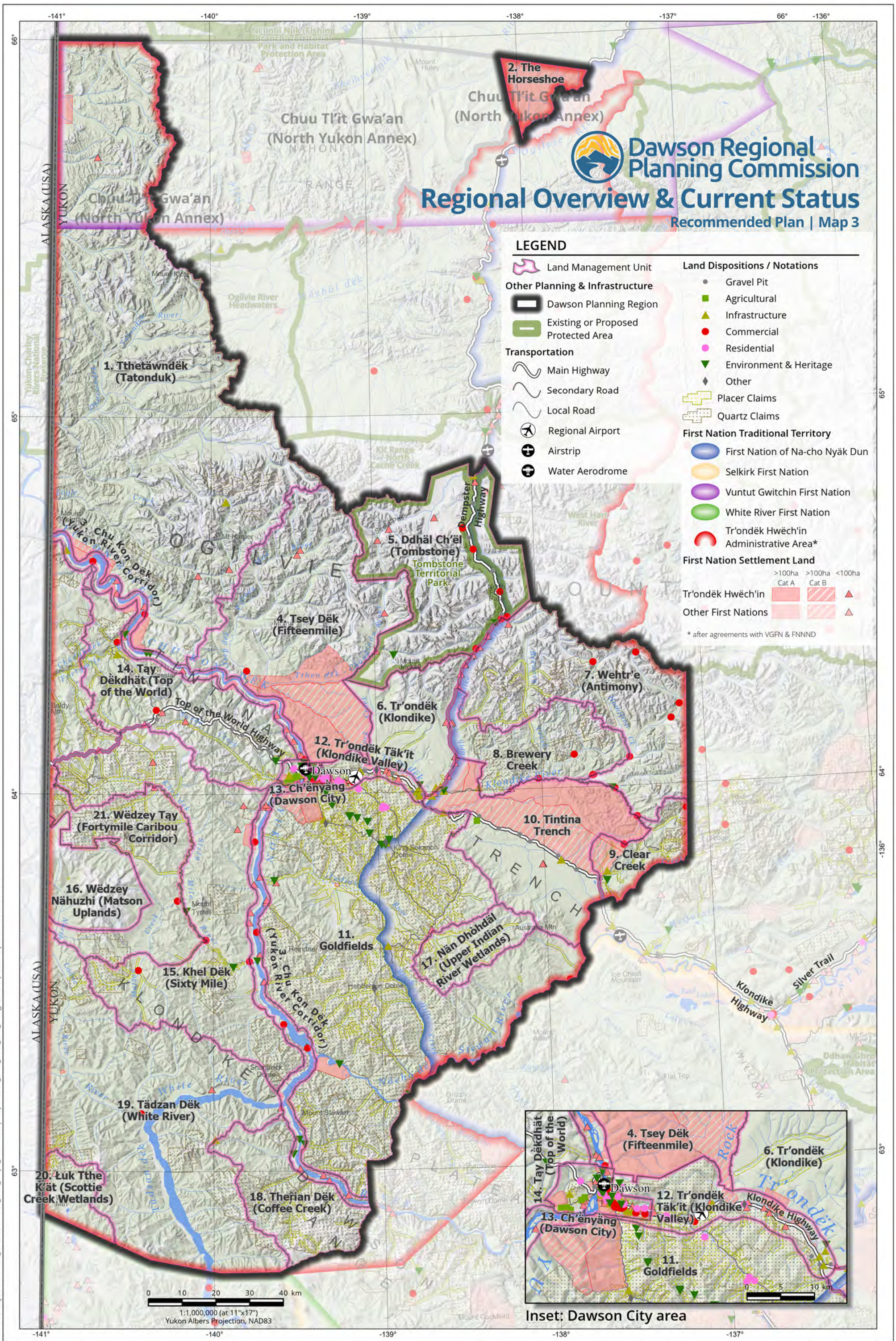
**Dawson Regional Planning Commission**  
**Recommended Land Withdrawal from Staking**  
 Recommended Plan | Map 2

**LEGEND**

Land Management Unit	<b>Recommended Land Withdrawal</b>
<b>Other Planning &amp; Infrastructure</b>	<b>Interim</b>
Dawson Planning Region	Quartz, Placer
Existing or Proposed Protected Area	Quartz Only
<b>Transportation</b>	<b>Permanent</b>
Main Highway	Quartz, Placer, Oil & Gas
Secondary Road	Quartz, Placer
Local Road	

File & Layout: Dawson\_Recommended\_Plan\_Maps\_20211223 | Map01to08\_LMU\_Data\_and\_Designations | Date Exported: 2022-06-15

**Data sources:** Maps in this series includes base and thematic data provided by NRCAN, GeoYukon (Yukon Government), Tr'ondëk Hwëch'in Government, US National Parks Service, Ducks Unlimited Canada, YLUPC, NYPC, or DRPC. **Data disclaimer:** This map is a graphical representation depicting the approximate size, configuration, and spatial relationship of geographic features. Some datasets have specific disclaimers available from the data provider. While great care has been taken to ensure the best possible quality, this document is neither intended for legal descriptions nor to calculate precise areas, dimensions, or distances. It is possible for errors, omissions, and inaccuracies occur in these data which is beyond our control. Wildlife Key Areas (WKA) are compiled by the Yukon Department of Environment WKA Inventory Program (2014 and 2019), against 1:250,000 NTDB from various data sources. Key Areas are based on observed locations of wildlife at key times of year, not on habitat assessment. With new information, boundaries and designations of Key Areas can change and additional Key Areas can be identified. Furthermore, Key Areas are not the only sites important for wildlife. Other information sources can identify other sites important for reasons outside the scope of the WKA Inventory Program. Updates to Key Areas occur only periodically. For the most current information, please consult with the Regional Biologist for your area of interest. If you have questions or would like to contribute to the WKA database, please contact the WKA Inventory Program. Digital copies of this map may be obtained from the Dawson Regional Planning Commission and the Yukon Land Use Planning Council websites at: [dawson.planyukon.ca](http://dawson.planyukon.ca) and [www.planyukon.ca](http://www.planyukon.ca)



# Dawson Regional Planning Commission

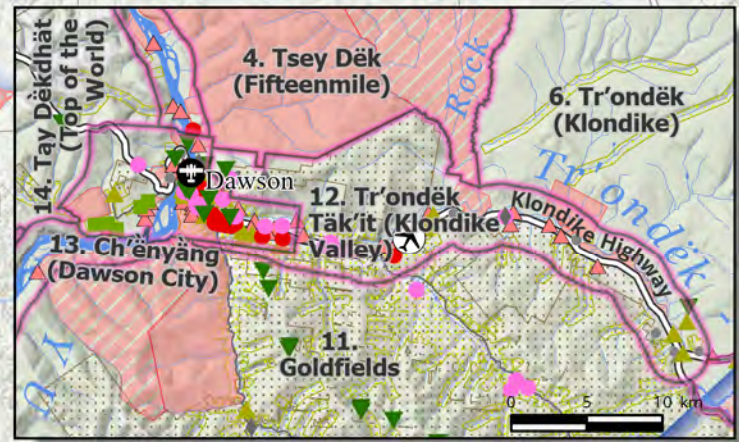
## Regional Overview & Current Status

Recommended Plan | Map 3

### LEGEND

- Land Management Unit**
  - Land Management Unit (pink outline)
- Other Planning & Infrastructure**
  - Dawson Planning Region (black outline)
  - Existing or Proposed Protected Area (green outline)
- Transportation**
  - Main Highway (thick grey line)
  - Secondary Road (medium grey line)
  - Local Road (thin grey line)
  - Regional Airport (airplane icon)
  - Airstrip (circle with cross icon)
  - Water Aerodrome (circle with cross icon)
- Land Dispositions / Notations**
  - Gravel Pit (black dot)
  - Agricultural (green square)
  - Infrastructure (yellow triangle)
  - Commercial (red circle)
  - Residential (pink circle)
  - Environment & Heritage (green inverted triangle)
  - Other (black diamond)
  - Placer Claims (yellow dashed box)
  - Quartz Claims (grey dashed box)
- First Nation Traditional Territory**
  - First Nation of Na-cho Nyäk Dun (blue circle)
  - Selkirk First Nation (orange circle)
  - Vuntut Gwitchin First Nation (purple circle)
  - White River First Nation (green circle)
  - Tr'ondëk Hwëch'in Administrative Area\* (red circle)
- First Nation Settlement Land**
  - >100ha Cat A (red square)
  - >100ha Cat B (red square with diagonal lines)
  - <100ha (red triangle)
- Tr'ondëk Hwëch'in** (red square)
- Other First Nations** (red square with diagonal lines)

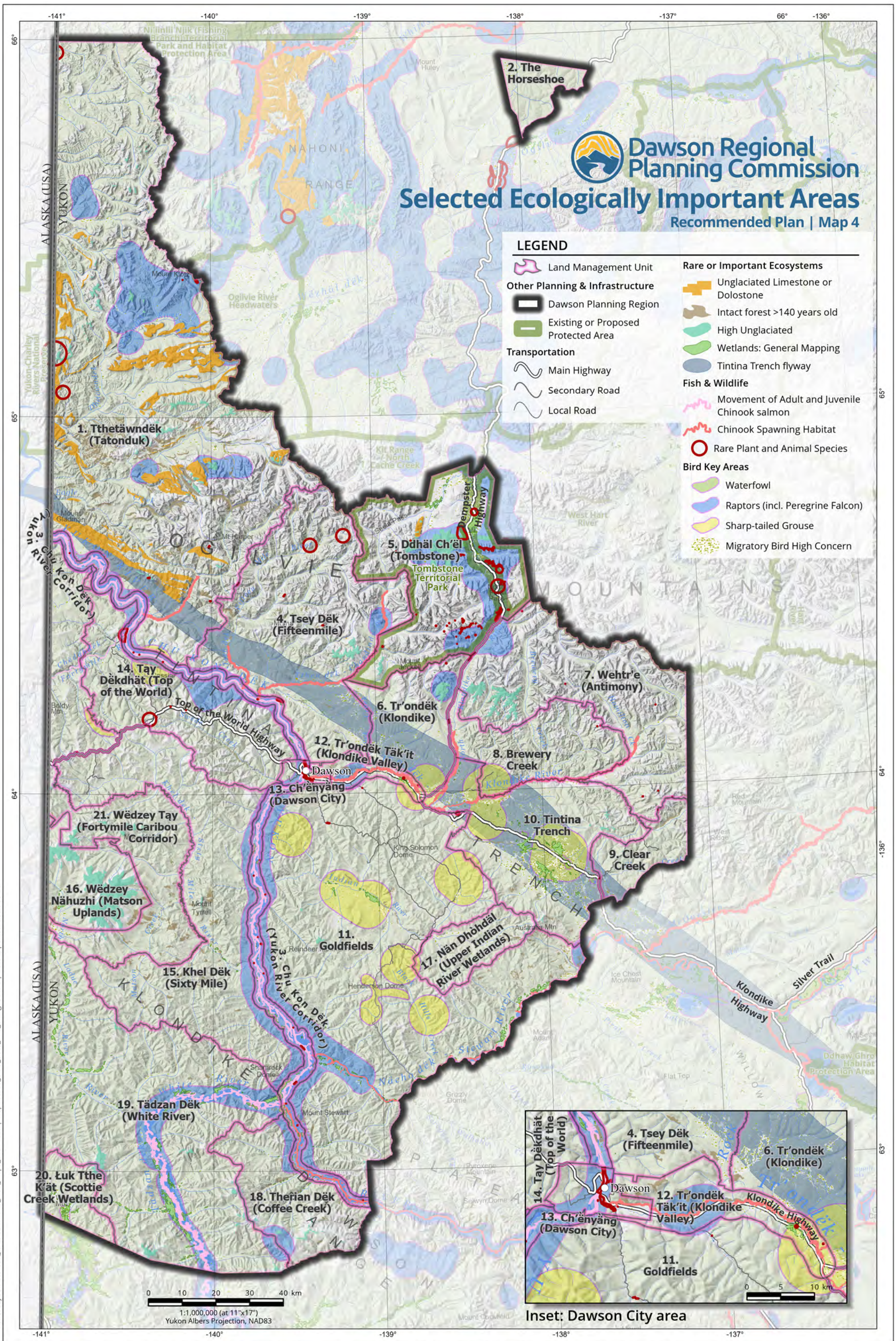
\* after agreements with VGFN & FNNND



Inset: Dawson City area

File & Layout: Dawson\_Recommended\_Plan\_Maps\_20211223 | Map01to08\_LMU\_Data\_and\_Designations | Date Exported: 2022-06-16

**Data sources:** Maps in this series includes base and thematic data provided by NRCan, GeoYukon (Yukon Government), Tr'ondëk Hwëch'in Government, US National Parks Service, Ducks Unlimited Canada, YLUPC, NYPC, or DRPC. **Data disclaimer:** This map is a graphical representation depicting the approximate size, configuration, and spatial relationship of geographic features. Some datasets have specific disclaimers available from the data provider. While great care has been taken to ensure the best possible quality, this document is neither intended for legal descriptions nor to calculate precise areas, dimensions, or distances. It is possible for errors, omissions, and inaccuracies occur in these data which is beyond our control. Wildlife Key Areas (WKA) are compiled by the Yukon Department of Environment WKA Inventory Program (2014 and 2019), against 1:250,000 NTDB from various data sources. Key Areas are based on observed locations of wildlife at key times of year, not on habitat assessment. With new information, boundaries and designations of Key Areas can change and additional Key Areas can be identified. Furthermore, Key Areas are not the only sites important for wildlife. Other information sources can identify other sites important for wildlife for reasons outside the scope of the WKA inventory program. Updates to Key Areas occur only periodically. For the most current information, please consult with the Regional Biologist for your area of interest. If you have questions or would like to contribute to the WKA database, please contact the WKA Inventory Program. Digital copies of this map may be obtained from the Dawson Regional Planning Commission and the Yukon Land Use Planning Council websites at: [dawson.planyukon.ca](http://dawson.planyukon.ca) and [www.planyukon.ca](http://www.planyukon.ca)



**Dawson Regional Planning Commission**  
**Selected Ecologically Important Areas**  
 Recommended Plan | Map 4

**LEGEND**

- Land Management Unit
- Other Planning & Infrastructure**
- Dawson Planning Region
- Existing or Proposed Protected Area
- Transportation**
- Main Highway
- Secondary Road
- Local Road
- Rare or Important Ecosystems**
- Unglaciated Limestone or Dolostone
- Intact forest >140 years old
- High Unglaciated
- Wetlands: General Mapping
- Tintina Trench flyway
- Fish & Wildlife**
- Movement of Adult and Juvenile Chinook salmon
- Chinook Spawning Habitat
- Rare Plant and Animal Species
- Bird Key Areas**
- Waterfowl
- Raptors (incl. Peregrine Falcon)
- Sharp-tailed Grouse
- Migratory Bird High Concern

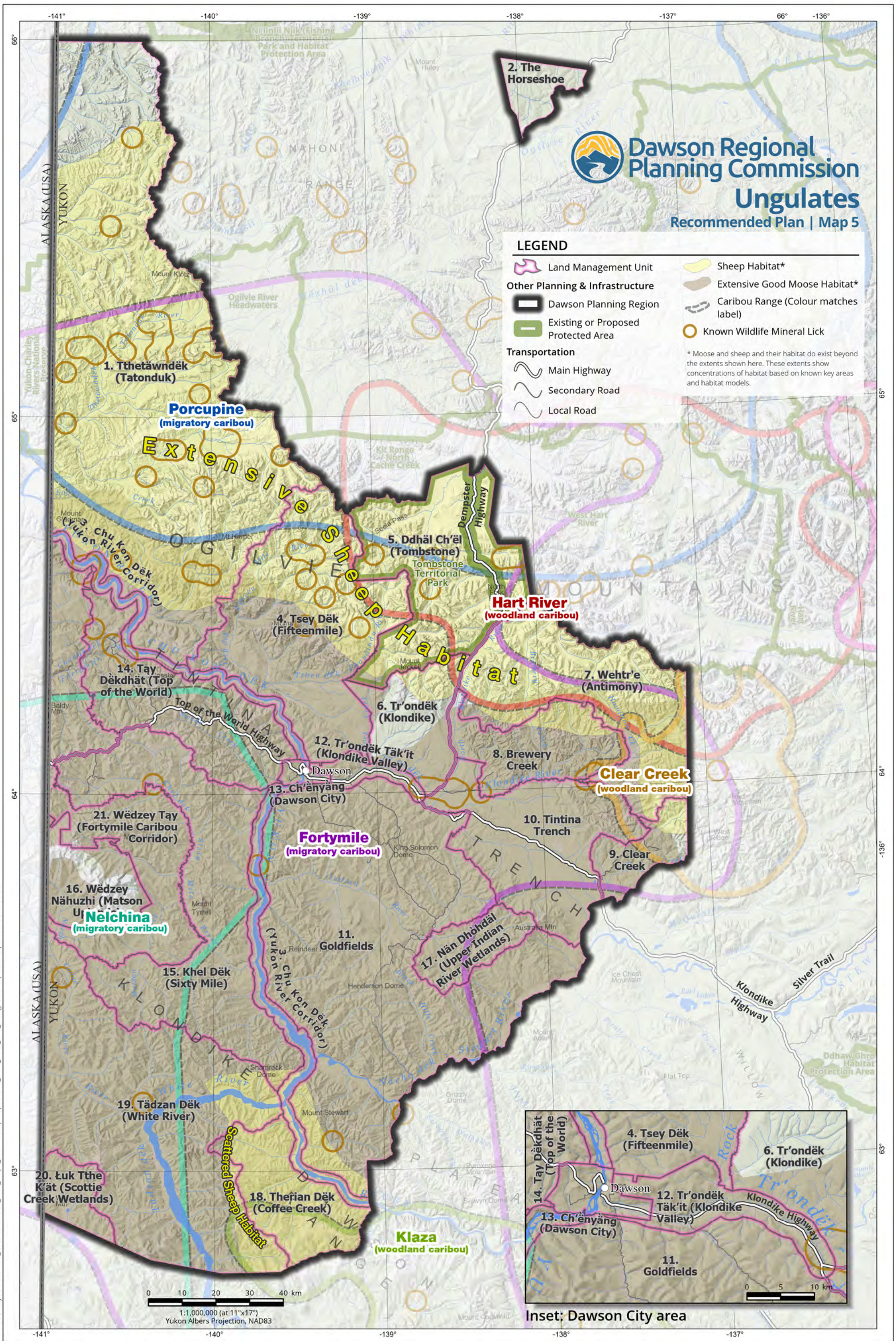
0 10 20 30 40 km  
 1:1,000,000 (at 11"x17")  
 Yukon Albers Projection, NAD83



**Inset: Dawson City area**

File & Layout: Dawson\_Recommended\_Plan\_Maps\_20211223 | Map01to08\_LMU\_Data\_and\_Designations | Date Exported: 2022-06-20

**Data sources:** Maps in this series includes base and thematic data provided by NRCan, GeoYukon (Yukon Government), Tr'ondëk Hwëch'in Government, US National Parks Service, Ducks Unlimited Canada, YLUPC, NYPC, or DRPC. **Data disclaimer:** This map is a graphical representation depicting the approximate size, configuration, and spatial relationship of geographic features. Some datasets have specific disclaimers available from the data provider. While great care has been taken to ensure the best possible quality, this document is neither intended for legal descriptions nor to calculate precise areas, dimensions, or distances. It is possible for errors, omissions, and inaccuracies occur in these data which is beyond our control. Wildlife Key Areas (WKA) are compiled by the Yukon Department of Environment WKA Inventory Program (2014 and 2019), against 1:250,000 NTDB from various data sources. Key Areas are based on observed locations of wildlife at key times of year, not on habitat assessment. With new information, boundaries and designations of Key Areas can change and additional Key Areas can be identified. Furthermore, Key Areas are not the only sites important for wildlife. Other information sources can identify other sites important for wildlife for reasons outside the scope of the WKA inventory program. Updates to Key Areas occur only periodically. For the most current information, please consult with the Regional Biologist for your area of interest. If you have questions or would like to contribute to the WKA database, please contact the WKA Inventory Program. Digital copies of this map may be obtained from the Dawson Regional Planning Commission and the Yukon Land Use Planning Council websites at: [dawson.planyukon.ca](http://dawson.planyukon.ca) and [www.planyukon.ca](http://www.planyukon.ca)



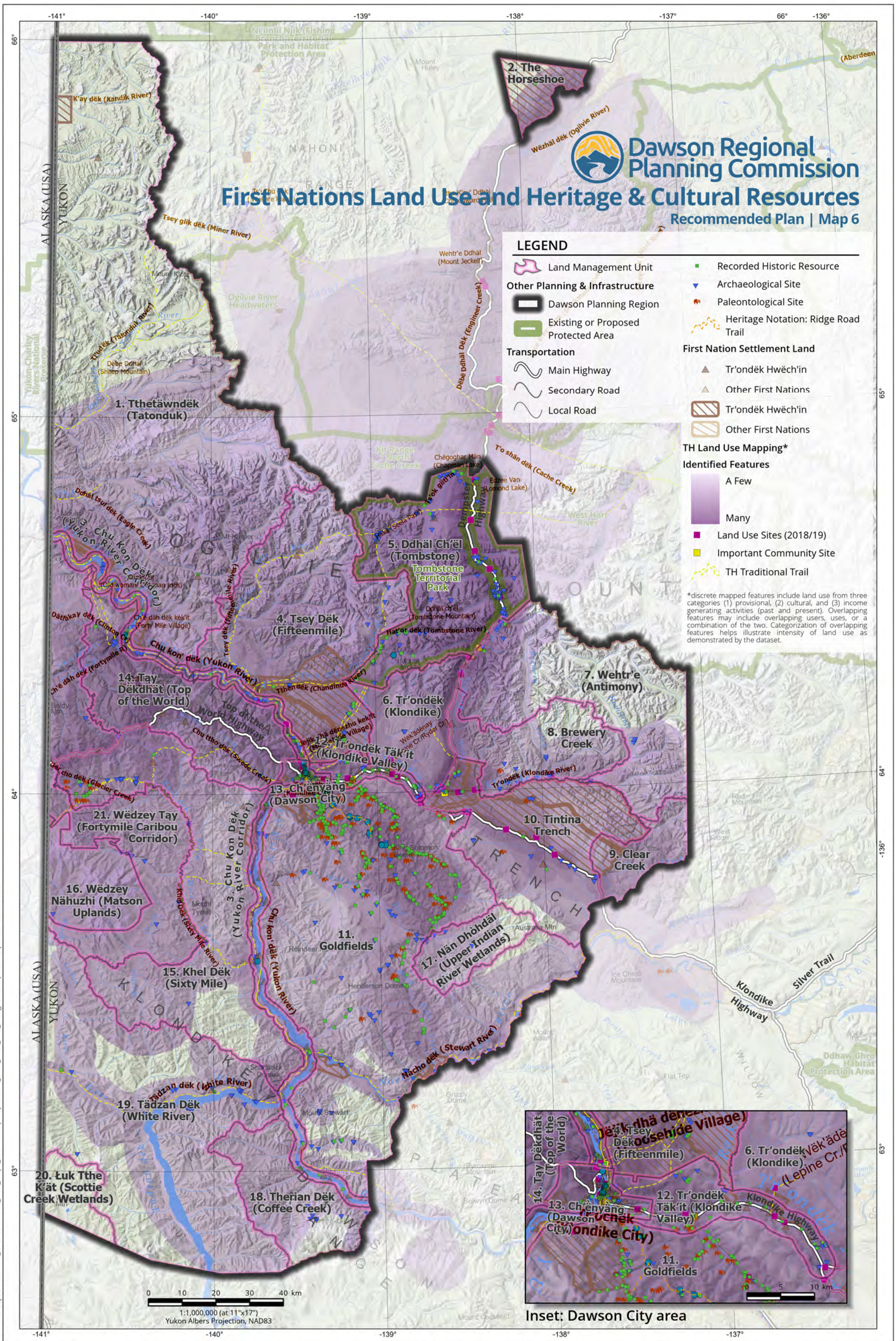
**Dawson Regional Planning Commission**  
**Ungulates**  
 Recommended Plan | Map 5

**LEGEND**

- Land Management Unit
  - Sheep Habitat\*
  - Extensive Good Moose Habitat\*
  - Dawson Planning Region
  - Existing or Proposed Protected Area
  - Known Wildlife Mineral Lick
  - Caribou Range (Colour matches label)
  - Main Highway
  - Secondary Road
  - Local Road
- \* Moose and sheep and their habitat do exist beyond the extents shown here. These extents show concentrations of habitat based on known key areas and habitat models.

File & Layout: Dawson\_Recommended\_Plan\_Maps\_20211223 | Map01to08\_LMU\_Data\_and\_Designations | Date Exported: 2022-06-23

**Data sources:** Maps in this series includes base and thematic data provided by NRCan, GeoYukon (Yukon Government), Tr'ondëk Hwëch'in Government, US National Parks Service, Ducks Unlimited Canada, YLUPC, NYPC, or DRPC. **Data disclaimer:** This map is a graphical representation depicting the approximate size, configuration, and spatial relationship of geographic features. Some datasets have specific disclaimers available from the data provider. While great care has been taken to ensure the best possible quality, this document is neither intended for legal descriptions nor to calculate precise areas, dimensions, or distances. It is possible for errors, omissions, and inaccuracies occur in these data which is beyond our control. Wildlife Key Areas (WKA) are compiled by the Yukon Department of Environment WKA Inventory Program (2014 and 2019), against 1:250,000 NTDB from various data sources. Key Areas are based on observed locations of wildlife at key times of year, not on habitat assessment. With new information, boundaries and designations of Key Areas can change and additional Key Areas can be identified. Furthermore, Key Areas are not the only sites important for wildlife. Other information sources can identify other sites important for reasons outside the scope of the WKA Inventory Program. Updates to Key Areas occur only periodically. For the most current information, please consult with the Regional Biologist for your area of interest. If you have questions or would like to contribute to the WKA database, please contact the WKA Inventory Program. Digital copies of this map may be obtained from the Dawson Regional Planning Commission and the Yukon Land Use Planning Council websites at: [dawson.planyukon.ca](http://dawson.planyukon.ca) and [www.planyukon.ca](http://www.planyukon.ca)



# First Nations Land Use and Heritage & Cultural Resources

## Recommended Plan | Map 6



### LEGEND

- Land Management Unit
- Dawson Planning Region
- Existing or Proposed Protected Area
- Main Highway
- Secondary Road
- Local Road
- Recorded Historic Resource
- ▼ Archaeological Site
- Paleontological Site
- Heritage Notation: Ridge Road Trail
- First Nation Settlement Land**
  - ▲ Tr'ondëk Hwëch'in
  - ▲ Other First Nations
  - Tr'ondëk Hwëch'in
  - Other First Nations
- TH Land Use Mapping\***
- Identified Features**
  - A Few
  - Many
  - Land Use Sites (2018/19)
  - Important Community Site
  - TH Traditional Trail

\*discrete mapped features include land use from three categories (1) provisional, (2) cultural, and (3) income generating activities (past and present). Overlapping features may include overlapping users, uses, or a combination of the two. Categorization of overlapping features helps illustrate intensity of land use as demonstrated by the dataset.



Inset: Dawson City area

0 10 20 30 40 km  
 1:1,000,000 (at 11"x17")  
 Yukon Albers Projection, NAD83

File & Layout: Dawson\_Recommended\_Plan\_Maps\_20211223 | Map01to08\_LMU\_Data\_and\_Designations | Date Exported: 2022-06-23

**Data sources:** Maps in this series includes base and thematic data provided by NRCan, GeoYukon (Yukon Government), Tr'ondëk Hwëch'in Government, US National Parks Service, Ducks Unlimited Canada, YLUPC, NYPC, or DRPC. **Data disclaimer:** This map is a graphical representation depicting the approximate size, configuration, and spatial relationship of geographic features. Some datasets have specific disclaimers available from the data provider. While great care has been taken to ensure the best possible quality, this document is neither intended for legal descriptions nor to calculate precise areas, dimensions, or distances. It is possible for errors, omissions, and inaccuracies occur in these data which is beyond our control. Wildlife Key Areas (WKA) are compiled by the Yukon Department of Environment WKA Inventory Program (2014 and 2019), against 1:250,000 NTDB from various data sources. Key Areas are based on observed locations of wildlife at key times of year, not on habitat assessment. With new information, boundaries and designations of Key Areas can change and additional Key Areas can be identified. Furthermore, Key Areas are not the only sites important for wildlife. Other information sources can identify other sites important for wildlife for reasons outside the scope of the WKA Inventory Program. Updates to Key Areas occur only periodically. For the most current information, please consult with the Regional Biologist for your area of interest. If you have questions or would like to contribute to the WKA database, please contact the WKA Inventory Program. Digital copies of this map may be obtained from the Dawson Regional Planning Commission and the Yukon Land Use Planning Council websites at: [dawson.planyukon.ca](http://dawson.planyukon.ca) and [www.planyukon.ca](http://www.planyukon.ca)

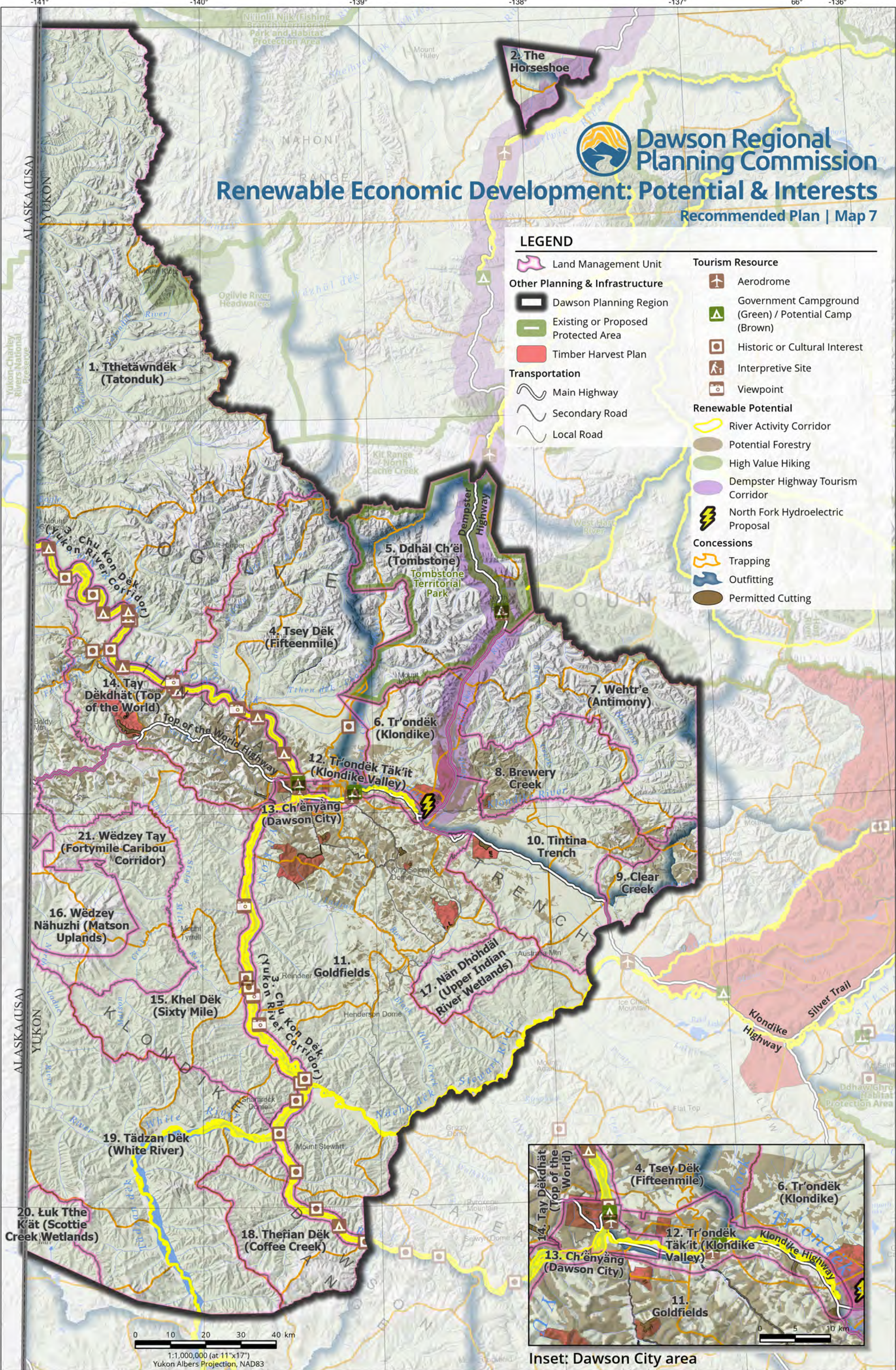
# Dawson Regional Planning Commission

## Renewable Economic Development: Potential & Interests

Recommended Plan | Map 7

### LEGEND

- |                                     |  |
|-------------------------------------|--|
| Land Management Unit                | Tourism Resource<br>Aerodrome                          |
| Dawson Planning Region              | Government Campground (Green) / Potential Camp (Brown) |
| Existing or Proposed Protected Area | Historic or Cultural Interest                          |
| Timber Harvest Plan                 | Interpretive Site                                      |
| Transportation<br>Main Highway      | Viewpoint  |
| Secondary Road                      | Renewable Potential<br>River Activity Corridor         |
| Local Road                          | Potential Forestry                                     |
|                                     | High Value Hiking                                      |
|                                     | Dempster Highway Tourism Corridor                      |
|                                     | North Fork Hydroelectric Proposal                      |
|                                     | <b>Concessions</b>                                     |
|                                     | Trapping   |
|                                     | Outfitting   |
|                                     | Permitted Cutting                                      |



File & Layout: Dawson\_Recommended\_Plan\_Maps\_20211223 | Map01to08\_LMU\_Data\_and\_Designations | Date Exported: 2022-06-23

**Data sources:** Maps in this series includes base and thematic data provided by NRCan, GeoYukon (Yukon Government), Tr'ondëk Hwëch'in Government, US National Parks Service, Ducks Unlimited Canada, YLUPC, NYPC, or DRPC. **Data disclaimer:** This map is a graphical representation depicting the approximate size, configuration, and spatial relationship of geographic features. Some datasets have specific disclaimers available from the data provider. While great care has been taken to ensure the best possible quality, this document is neither intended for legal descriptions nor to calculate precise areas, dimensions, or distances. It is possible for errors, omissions, and inaccuracies occur in these data which is beyond our control. Wildlife Key Areas (WKA) are compiled by the Yukon Department of Environment WKA Inventory Program (2014 and 2019), against 1:250,000 NTDB from various data sources. Key Areas are based on observed locations of wildlife at key times of year, not on habitat assessment. With new information, boundaries and designations of Key Areas can change and additional Key Areas can be identified. Furthermore, Key Areas are not the only sites important for wildlife. Other information sources can identify other sites important for reasons outside the scope of the WKA inventory program. Updates to Key Areas occur only periodically. For the most current information, please consult with the Regional Biologist for your area of interest. If you have questions or would like to contribute to the WKA database, please contact the WKA Inventory Program. Digital copies of this map may be obtained from the Dawson Regional Planning Commission and the Yukon Land Use Planning Council websites at: [dawson.planyukon.ca](http://dawson.planyukon.ca) and [www.planyukon.ca](http://www.planyukon.ca)

# Non-Renewable Economic Development: Potential & Interests

Recommended Plan | Map 8

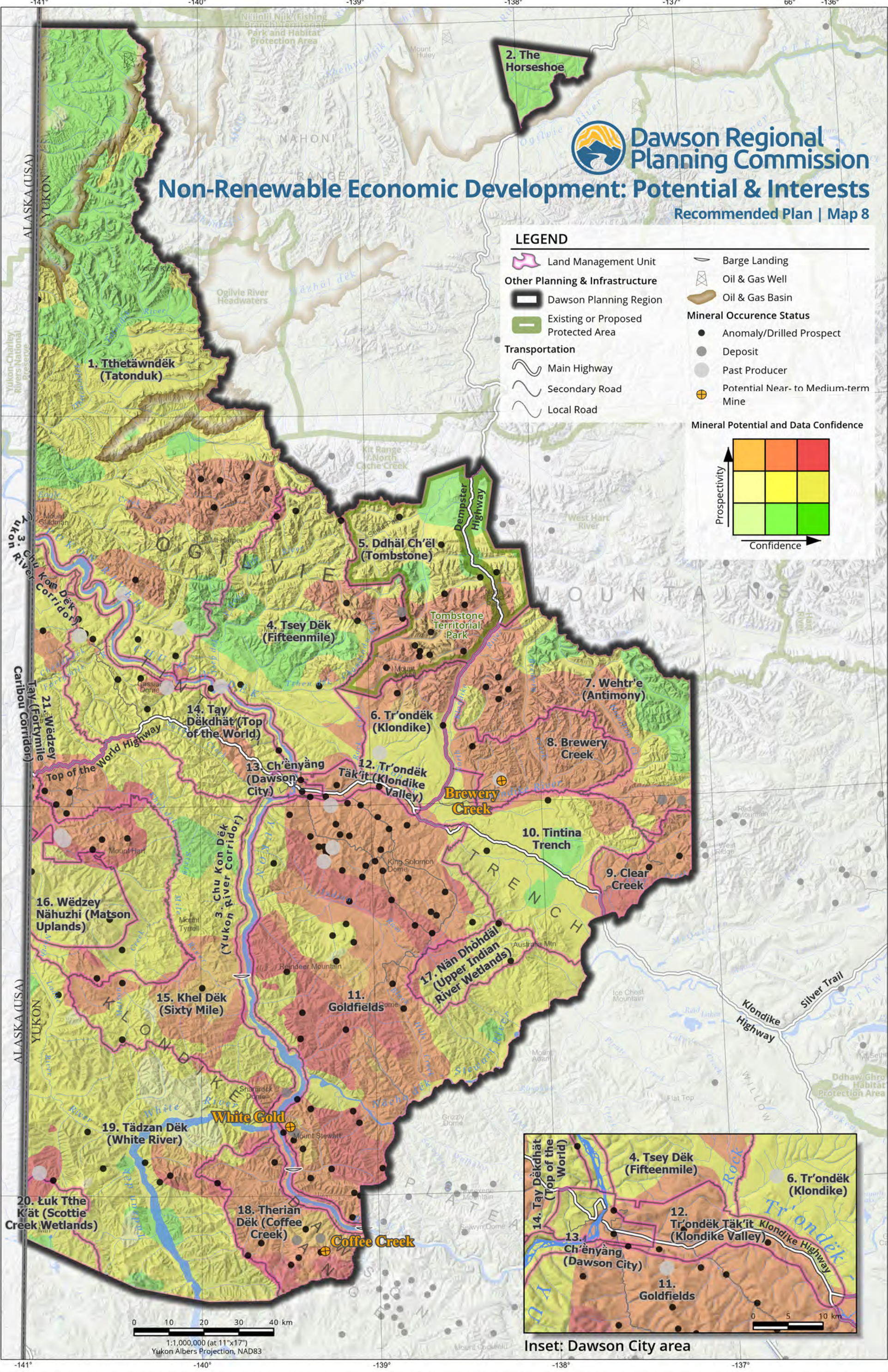


**Dawson Regional Planning Commission**

## LEGEND

- Land Management Unit
- Dawson Planning Region
- Existing or Proposed Protected Area
- Main Highway
- Secondary Road
- Local Road
- Barge Landing
- Oil & Gas Well
- Oil & Gas Basin
- Mineral Occurrence Status**
  - Anomaly/Drilled Prospect
  - Deposit
  - Past Producer
  - Potential Near- to Medium-term Mine
- Mineral Potential and Data Confidence**

Prospectivity ↑		Confidence →



0 10 20 30 40 km  
1:1,000,000 (at 11"x17")  
Yukon Albers Projection, NAD83

File & Layout: Dawson\_Recommended\_Plan\_Maps\_20211223 | Map01to08\_LMU\_Data\_and\_Designations | Date Exported: 2022-06-23