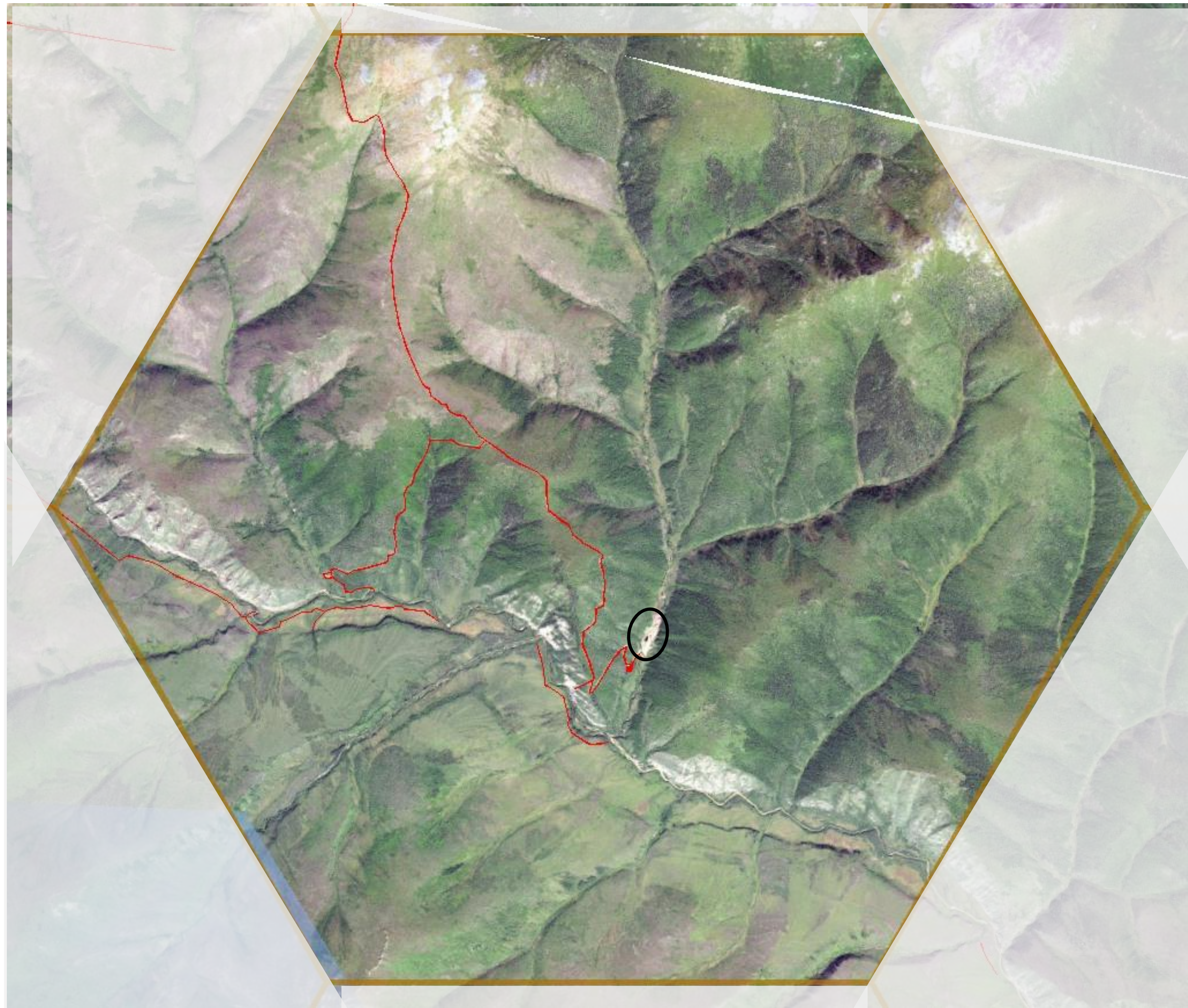


# Surface disturbance at ISA 1 critical threshold (0.25%)



## Explanations:

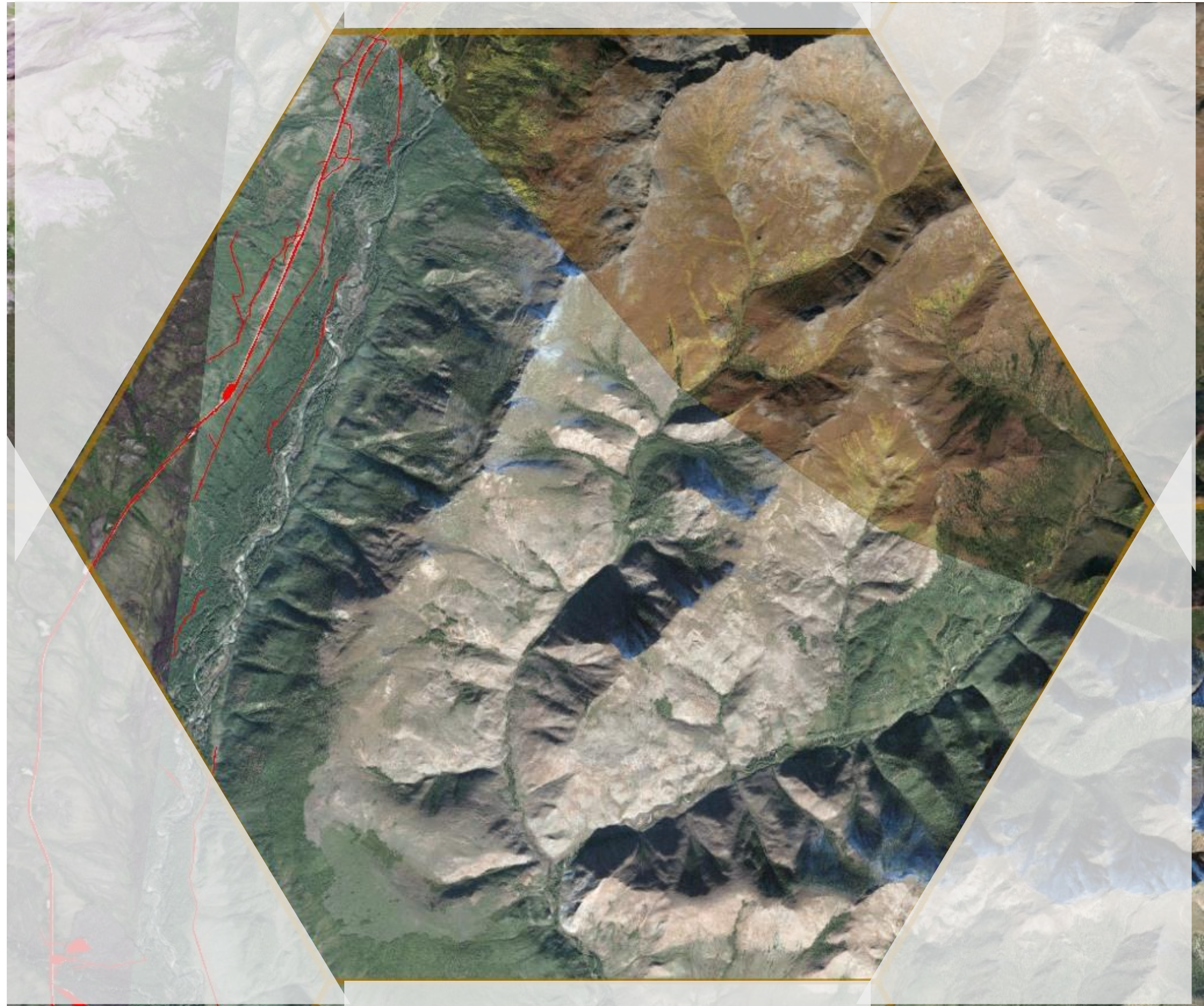
### Scale:

There are 10km between opposite points of the hexagon.

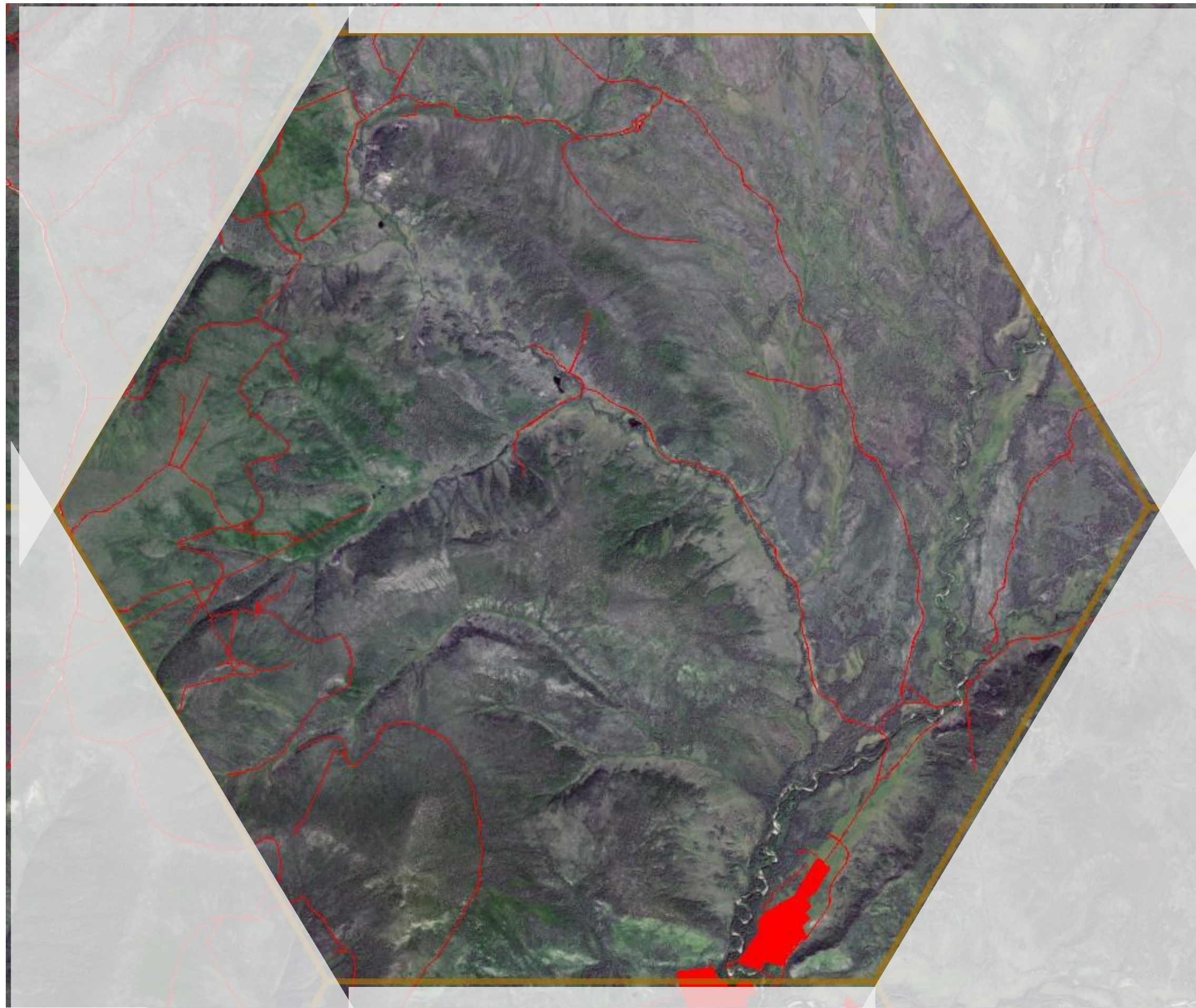
### Black oval:

Disturbance that occurred after disturbance mapping was not included in the disturbance total.

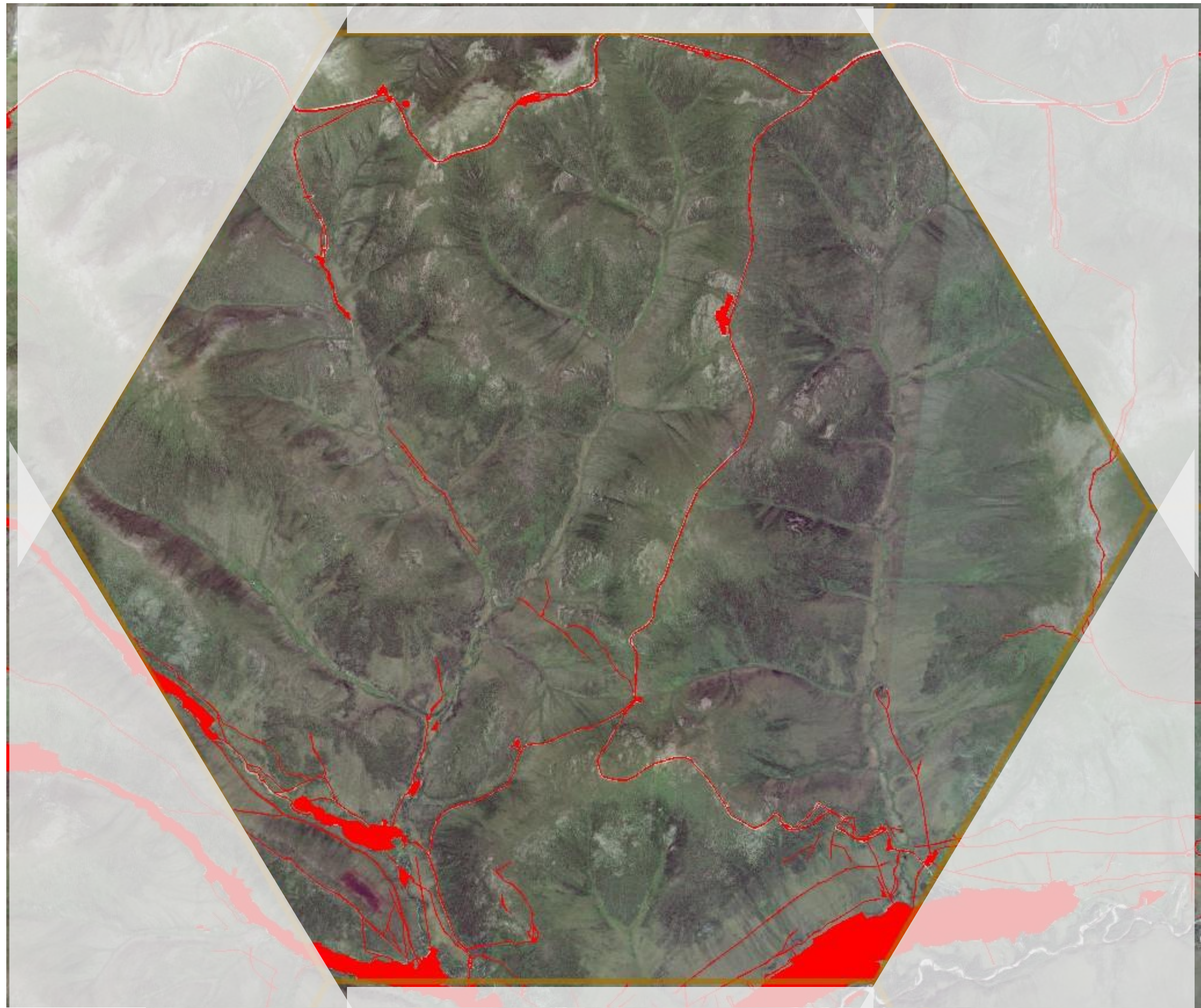
Surface  
disturbance at  
**ISA 1**  
critical  
threshold  
(0.25%)



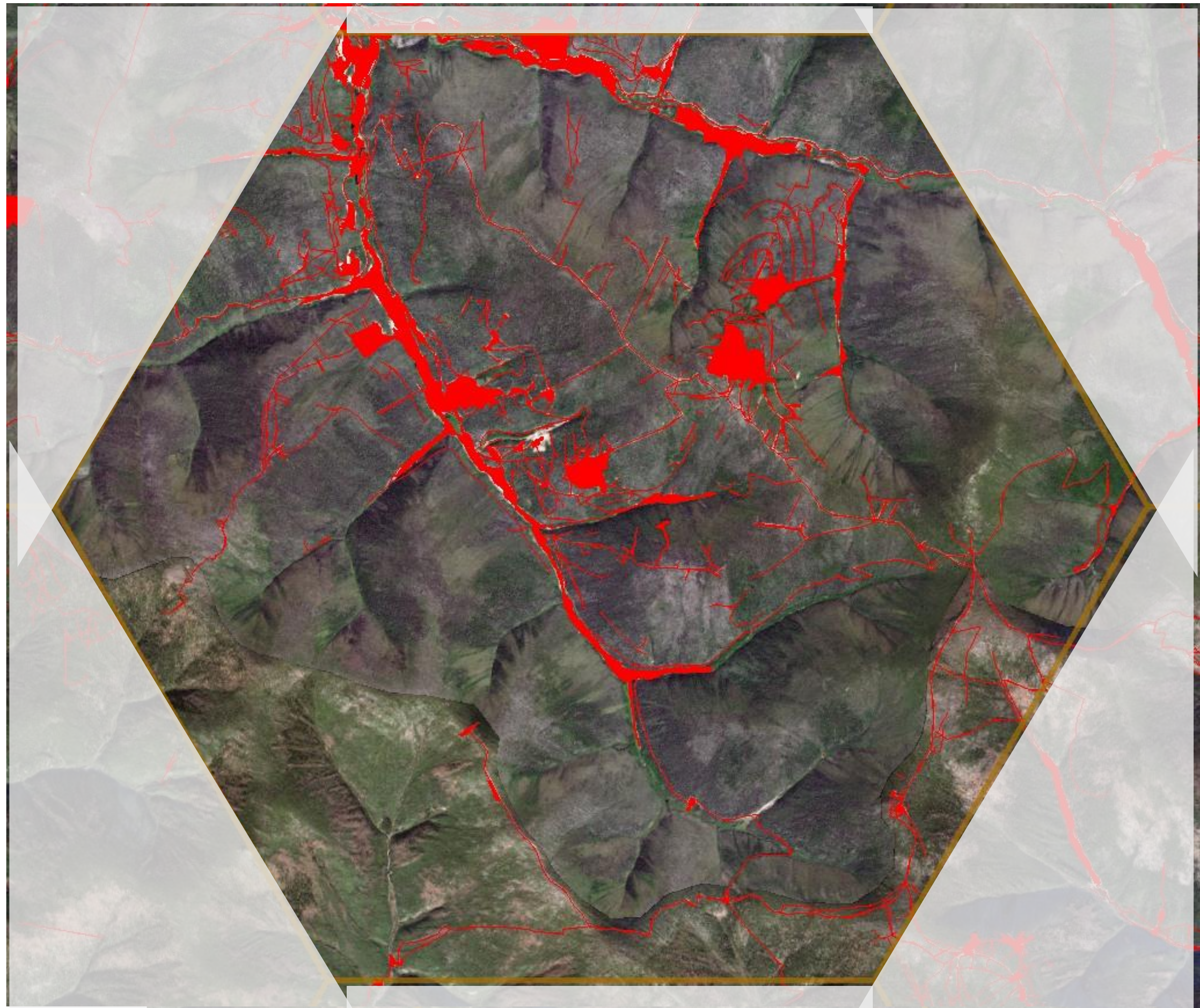
Surface  
disturbance at  
**ISA 2**  
critical  
threshold  
(1.0%)



Surface  
disturbance at  
**ISA 3**  
critical  
threshold  
(2.5%)



Surface  
disturbance at  
**ISA 4**  
critical  
threshold  
(5.0%)



- From: N:\Planning Commissions\DRPC\Cumulative Effects\DRPC Framework Options\CE\_threshold\_material\_for\_DRPC\_mtg\_May2021.pptx