

Dawson Regional Land Use Plan: Progress Update and Next Steps

2020 Yukon Geoscience Forum
November 2020

Tim Van Hinte, MCIP, RPP
Senior Land Use Planner
Dawson Regional Planning Commission



Overview

- Commission Mandate and Vision Statement
- Dawson Planning Process
- Draft Plan Concepts
- Next Steps and How to Contribute

Dawson Regional Planning Commission



(from left to right) Angie Joseph-Rear, Debbie Nagano, Alice McCulley, Dan Reynolds, John Flynn

Mandate: To develop a regional land use plan for Settlement Land and Non-Settlement Land that is consistent with, and achieves the objectives of, Chapter 11 of the Tr'ondëk Hwëch'in Final Agreement



Vision Statement

For the Region

The Dawson Region encompasses a unique landscape that enables our community to build a diverse economy while maintaining a rich cultural legacy and a healthy environment.

For the Process

Shared and respectful use of natural resources is guided by the principles of sustainable development, respect for heritage and culture, and conservation of fish and wildlife habitats. Ongoing community stewardship, based on consensus building, will achieve significant and lasting social, economic, and ecological benefits for all Yukoners.

For the Plan

Our regional plan will be crafted to reflect community values and will guide the integrated use and management of land, water, and resources.

Key Milestones in the Dawson Regional Planning Process

Commission Start-Up
Commission established
Orientation & Training

phase 1

Information Update
Revise Vision Statement
Gather public input & update Resource Assessment Report
Gather public input & update Issues and Interests Report
Update Cumulative Effects Report

phase 2

Draft Plan
Create Draft Plan
Public Review of Draft Plan

phase 3

Recommended Plan
Consider Public Feedback on Draft Plan
Submit Recommended Plan

phase 4

we are HERE

- Commission has updated the Issues & Interests Report and Resource Assessment Report
- Summary report on community engagement process to understand public perspectives on information collected and key planning issues
- Starting to build the Draft Plan

Planning Process

Building the Draft Plan

- Analysis of available information including areas of significant economic, ecological and/or cultural value
 - Spatial overlay analysis
 - Landscape simulation / scenario modelling
 - Engagement with technical experts
 - Guidance from the Commission and Parties
- Develop land use options for addressing planning issues linked to vision, goals and objectives



Draft Plan Concepts



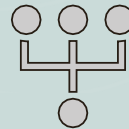
Landscape Management Units



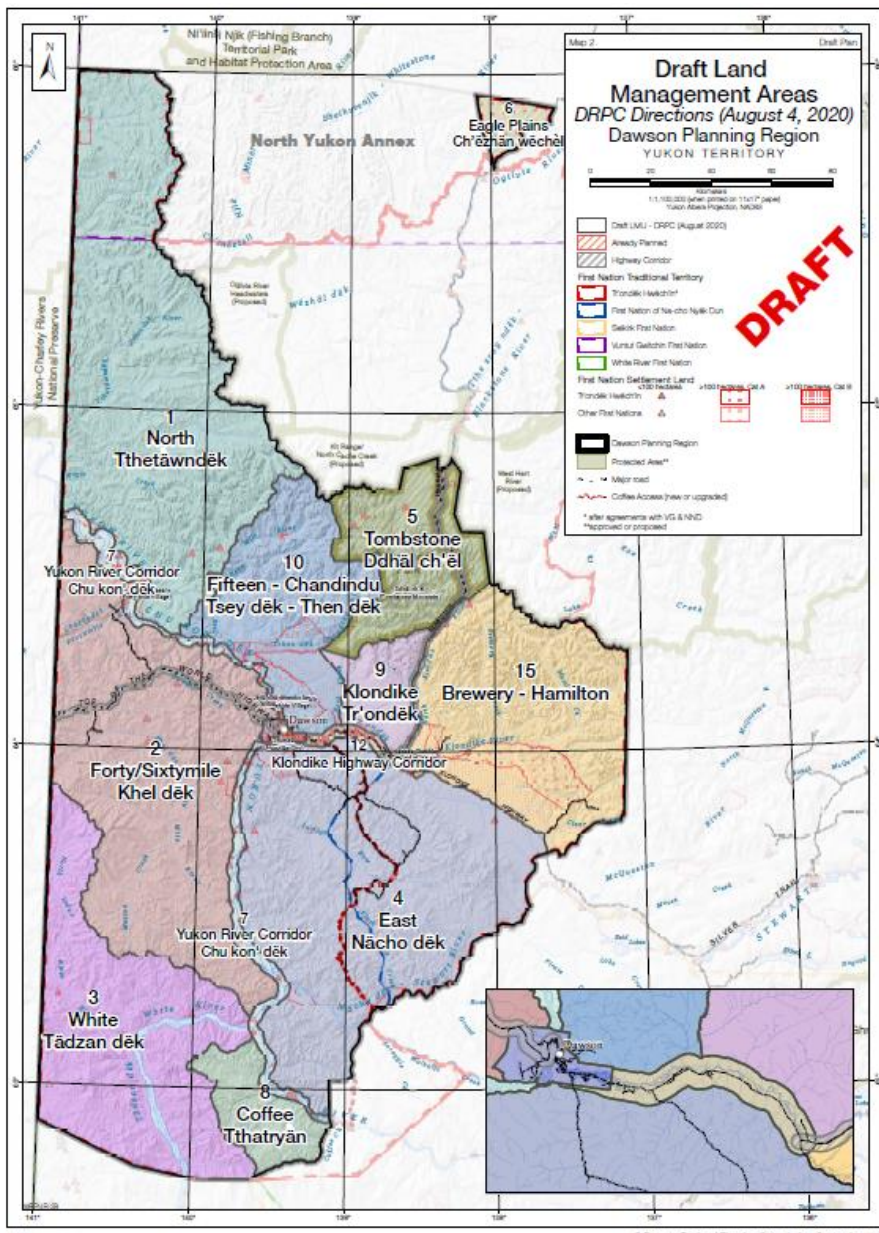
Land Designation System



Management Strategies



Cumulative Effects Management



Landscape Management Units (LMU)

- Dividing the planning region into smaller areas of land based on management intent

Land Designation System

- Describes the management intent in each LMU by “zoning” different LMUs for different levels of activity

Cumulative Effects Management

- How the plan can manage for cumulative disturbance and effects on the landscape

Management Strategies

- Guidance and recommendations that apply to land use in the planning region

Management Strategies

- Reduce temporal and spatial overlap of industrial activities and key values

Ex: Timing Windows



- Minimize impacts from ground disturbance to key values

Ex: Reclamation Standards



- Support non-industrial activities in all zones

Ex: Traditional Economic Activities



- Recommend new policy if there is a gap

Ex: Access Management Planning



- Conduct additional research on key topics or issues

Ex: Grizzly Bears



- Others?



