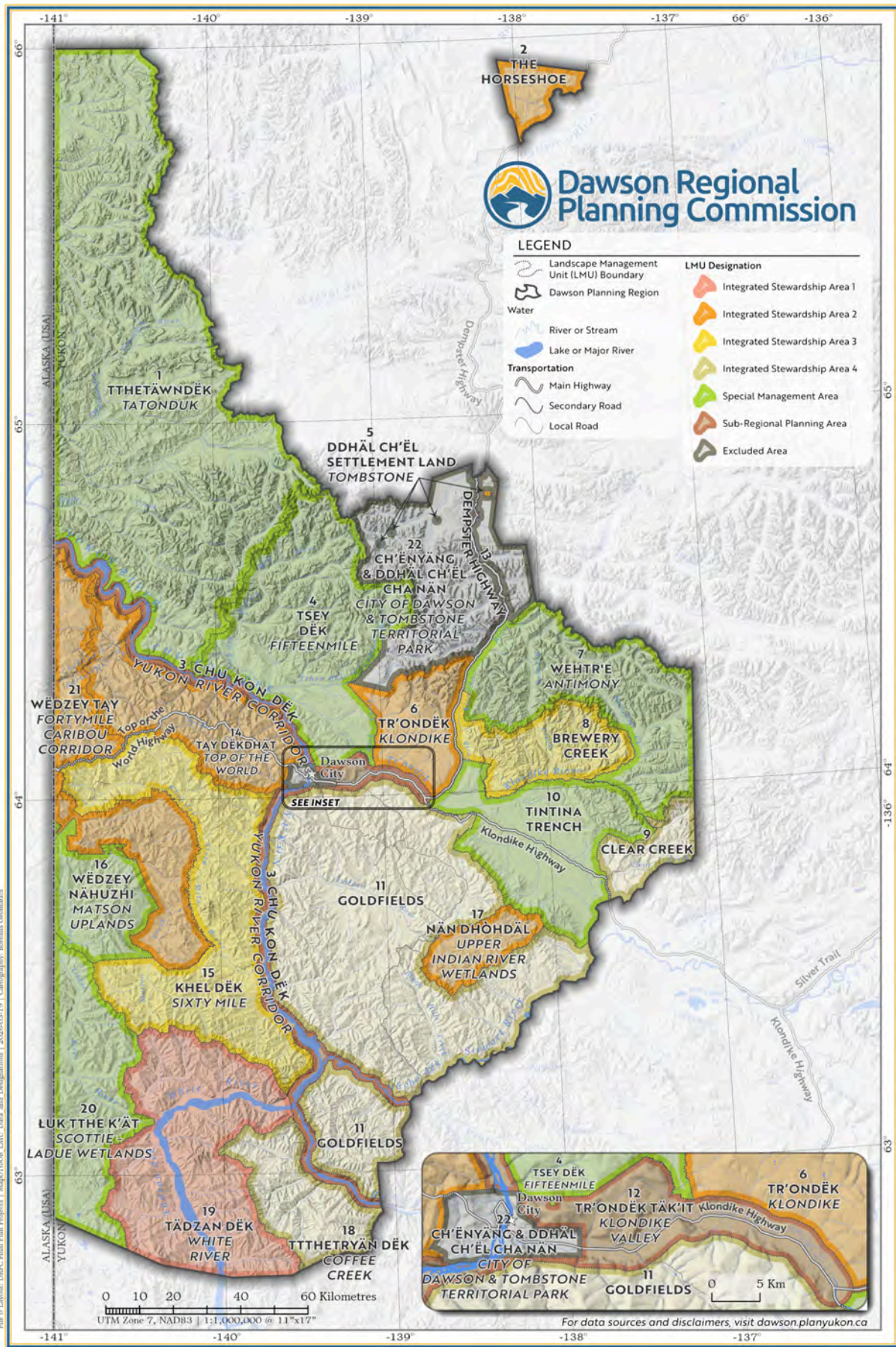


Final Recommended Dawson Regional Land Use Plan

Summary

March 2026





File: G:\Landscape\DRBC Final Plan Projects\Map01\Task01_LMU Data and Designations | 2024-03-19 | Cartography: Bernice Geminaris



Photo: Government of Yukon

Table of Contents

Message from the Commission	1
Nän käk ndä tr'ädäl - On the land we walk together	4
Goals, Guiding Principles, and Tools	7
Management Directions and Values	11
Cumulative Effects Management	15
Access Management	18
Landscape Management Units	19
Implementation	23

Message from the Commission



Photo: Dawson Regional Planning Commission

Drin hqzq, Welcome

We are proud to share the Final Recommended Dawson Regional Land Use Plan. If you have been following along since the beginning, thank you for continuing to engage with this important process. If this is your introduction to the Plan, we hope you find value and see your views reflected here.

This Plan has been written by the Dawson Regional Planning Commission (“the Commission”), a group of six dedicated community members who have come together to provide guidance about the future management of the Dawson Region.

We were each nominated to the Commission by the Government of Yukon or the Tr’ondëk Hwëch’in Government. Once nominated, we only represented ourselves and our

community. We accepted our nominations because of a sense of duty to the Region and the community. The creation of this Plan is a meaningful way to implement the Final Agreement, which, importantly, is for everyone living in the Yukon, not just Tr’ondëk Hwëch’in citizens, and is a reason many of us said yes to participating in this process.

We also said yes because we have a connection to the land, the wildlife, the people, and the cultures of this Region, and we feel a sense of stewardship and responsibility to the land and to future generations.

This Plan is about ensuring the future of the people and cultures that live here, managing conflicts, and living together in a sustainable way. We’ve tried to do the impossible and provide both certainty and flexibility. This is a regional plan, it is not fine-scale, and it does not address everything – it should inspire future innovation and collaboration.

This Plan is grounded in co-management. There is an expectation that in the implementation of this Plan, the Tr’ondëk Hwëch’in Government and the Government of Yukon work together as equal and respectful partners to bring the vision and intention of this Plan to life. This Plan was developed by

following the Spirit and Intent of the Final Agreement – we worked together and continued to talk when discussions got tough; we collaborated and listened to all of the different voices; when we didn't know how to move forward, we asked those who know more than us, including Elders. We hope that the Parties continue with this spirit and intent through negotiations, and we encourage all Yukoners to follow this same spirit and intent in their own lives.

To the people of this Region – The Dawson Region is our home. Many of our ancestors are from here, and many of our children live here. The readers and users of this plan are our family, our neighbours, our colleagues. We tried to consider all these people and their views when making our decisions.

As Commission members, we bring many priorities, worldviews, and experiences to the table. We have worked together for six years to get to this stage. There have been times when we didn't all agree, and topics that we needed to discuss many times before reaching a decision. But through this all,

we never voted. We always had respectful conversations that resulted in consensus decisions, every single time. We are very proud of this outcome. We hope that everyone can see a part of themselves in this Plan. We hope this Plan brings people a better understanding of this Region and its complexities, and the different cultures and diverse wildlife and landscape it contains.

To the land and water and all the relations that live here – This Plan is for you. It is for the land and the water. It is for the two-legged, the four-legged, the winged, the finned, and the crawling. It is for guiding the relationship between the land and the water and all Yukoners and visitors to this Region.

To those who came before us – We are grateful to those who laid the foundation for how we got here today. Whether it is our own families who have taken us out on the land since we were young, the community members who showed us the way when we were first learning about the Region or how to live with land, or Tr'ondëk Hwëch'in



Photo: Government of Yukon



representatives who negotiated the Final Agreement. We hope this Plan continues what you started.

To the next generations – This Plan is for you and all those after you. We encourage you to continue this work, to continue to work together, to uphold the spirit and intent of the Final Agreement, and to work together in a good way. We encourage you to consult your elders, to learn from those with viewpoints different than your own, and to be outside on the land, learning from it.

To the Parties – A lot of work has been done to get to this stage. We have put in so much time and energy, and we know the public and the stakeholders have, and so have you. The completion of the Final Recommended Plan represents a significant milestone in this process. It is

the result of much negotiation, consultation, and consideration of input from the community, Tr'ondëk Hwëch'in, and the Government of Yukon.

We are confident that the Final Recommended Plan requires limited refinement in order to become the Approved Plan. The Approved Plan must continue to reflect all of these perspectives. We call on you to move ahead expeditiously. A delayed process does not meet the spirit and intent of the Final Agreements.

Thank you for reading this Plan and participating in this process so far. We are proud of the work we have done to date and look forward to continuing to work together in a good way.

Mähsj' cho, thank you.

Nän kāk ndä tr'ädäl - On the land we walk together



Regional land use planning in the Yukon is an implementation requirement of Chapter 11 of the First Nation Final Agreements: *"Regional land use plans shall include recommendations for the use of land, water and other renewable and non-renewable resources in the planning region in a manner determined by the Regional Land Use Planning Commission."*

The Final Agreements, including the Tr'ondëk Hwëch'in Final Agreement (THFA), establish a framework for sustainable development and integrated land and resource management while upholding First Nation rights and responsibilities.

The Dawson Regional Land Use Plan ("the Plan") serves all people in the

Dawson Region, Tr'ondëk Hwëch'in and newcomers (multigenerational and more recent) alike. Its guiding relationship is expressed as Nän kāk ndä tr'ädäl (On the land we walk together), which reflects shared stewardship responsibilities and interconnections between people and the land.

This idea describes how the Commission worked (through consensus) and how people of the Region are encouraged to relate to one another and the land.

The Plan intentionally communicates and holds space for both the Tr'ondëk Hwëch'in and Western worldviews. It recognizes that future generations will continue to adapt and bring together their knowledge in new ways.

Truth & Reconciliation

Truth: Despite displacement and restrictions imposed by colonial laws and institutions, including the residential school system, the Tr'ondëk Hwëch'in have continued to live their culture, assert their rights and responsibilities, and adapt to new realities.

Reconciliation is an ongoing process of repairing relationships through awareness, atonement, and action, beginning with understanding this history. It is a shared responsibility carried most heavily by newcomers and their governments. Land use planning itself is an act of reconciliation when it expresses the co-management envisioned in the Final Agreements.

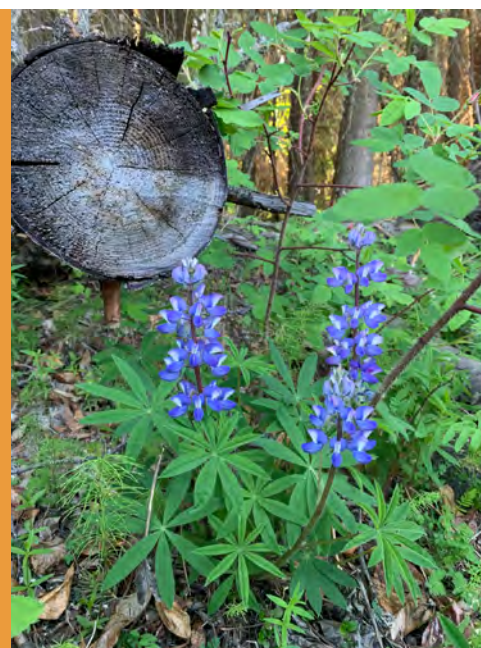


Photo: Dawson Regional Planning Commission

Co-management

The meaningful participation by both parties in the management of land and public resources within the region and the implementation of this plan in a manner that:

- Fosters a positive, mutually respectful, and long-term relationship between the parties,
- Upholds and honours the spirit and intent of the final agreements, and
- Promotes the objectives of reconciliation.

As signatories of this plan, Tr'ondëk Hwëch'in and the Government of Yukon equally share the authority and responsibility of implementing, monitoring, reviewing, and adaptively managing the Dawson Regional Land Use Plan. Co-management applies exclusively to the parties of the plan and, where agreed by both parties, affected First Nations.

The Commission emphasizes long-term relationships and the central role of Tr'ëhudè—how to live in a good way. This vision applies equally to all phases of Plan development and implementation:

For the Region, unique landscapes supporting a diverse and sustainable economy, a rich cultural legacy, and a healthy environment with thriving biodiversity.

For the Process, shared and respectful use of resources guided by sustainable development, respect for culture and heritage, Traditional Knowledge, and conservation. Community stewardship and consensus-building are central.

For the Plan, reflecting community values and guiding the coordinated and integrated protection, management, and use of land, water, and resources as required in the THFA.

The Dawson Planning Region (“the Region”) covers 39,854 km², 10% of the Yukon. It overlaps with the Traditional Territories of Tr'ondëk Hwëch'in (almost entirely), Vuntut Gwitchin, and Na-Cho Nyäk Dun, and with additional asserted interests by White River First Nation.

The Plan applies to all public lands and Tr'ondëk Hwëch'in Settlement Lands in the Region, and excludes the City of Dawson, the Klondike National Historic Sites, and Tombstone Territorial Park.

The Plan comes into effect upon signing and is intended to remain in place indefinitely as a living document that can evolve through amendments and scheduled reviews.

Legally, its authority flows from the Final Agreements, requiring co-management between Tr'ondëk Hwëch'in and the Government of Yukon.

Environmentally, the Region’s landscapes are shaped by Beringian history, steep ecological gradients, widespread wetlands, salmon-bearing rivers, climate-sensitive permafrost, and increasing pressures from wildfire and warming temperatures.

Culturally, the Region hosts a deep, unbroken presence of Tr’ondëk Hwëch’in since time immemorial and the transformative impacts of the Gold Rush, resulting in today’s diverse and seasonal population centered in Dawson City.

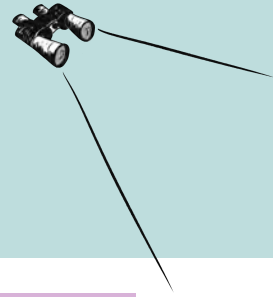
Economically, the Region is characterized by a strong public service sector, as well as land-based industries of mining, tourism, agriculture, forestry, and a strong traditional economy based on harvesting and land-based cultural practices.

The Region exists within a complex **regulatory landscape**, where multiple governments and agencies—Tr’ondëk Hwëch’in, Yukon, Canada, YESAB, the Water Board, and others—share overlapping responsibilities that make regional planning essential for coherent, long-term decision-making.



Photo: Dawson Regional Planning Commission

Goals, Guiding Principles, and Tools



Community, Culture, and Heritage Goals

1. Land stewardship is practised by all residents of and visitors to the Region, including governments.
2. Land stewardship is promoted and supported by governments.
3. Land-based activities that strengthen connections to the land are readily available, accessible, and well-attended.
4. Tr'ondëk Hwëch'in culture and the Hän language are thriving and respected throughout the Region.
5. Traditional harvesting is actively practised and respected.
6. The community is diverse and resilient, relying on the strengths of multiple worldviews and ways of being that coexist with mutual respect.
7. The community has high capacity and resilience in people and infrastructure.
8. The community has capacity and knowledge to respond and adapt to environmental, social, and climate changes.
9. Land-related decision-making prioritizes community health and well-being.
10. Tr'ondëk Hwechin's heritage, as self-determined, is respected throughout the Region.



Environment Goals

1. Integrity and connectivity of the landscape's diverse ecosystems are maintained, restored, and enhanced.
2. Healthy ecosystems support thriving biodiversity, including abundant fish and wildlife populations that, in turn, support sustainable harvest.
3. The integrity of values on the land are conserved via ongoing reclamation.
4. Ecosystems are managed holistically, with consideration of cumulative effects.
5. Ecosystems are stewarded to ensure their resilience to ongoing climate change.
6. Healthy ecosystems and healthy land-people relationships are interdependent.
7. Ecological integrity is valued as a part of a thriving sustainable local economy.



Photo: Yukon Land Use Planning Council

Sustainable Economy Goals



1. Residents of the Region have access to diverse economic opportunities that do not compromise current or future community well-being or ecological integrity.
2. Local economic activity supports a comfortable standard of living for all residents.
3. Economic activities that take place in the Region benefit all of the Region's residents.
4. Land use conflicts are minimal, and there is land use certainty across the Region.
5. To minimize impacts to the land, economic activities and development make efficient use of existing access and infrastructure.
6. The Region's economy includes a strong traditional economy, centred on cultural value and social well-being.
7. The Region's economy is largely centred on sustainable activities, provides for current and future generations, and is resilient, versatile, and responsible.
8. The Region's economy must be strong, robust, and profitable to the Region's residents.
9. The Region's economy supports multigenerational operations.



Photo: Yukon Land Use Planning Council

Four principles direct how people should interact with the land under the Plan's guidance.

Sustainable Development:

Sustainable development is beneficial socio-economic change that does not undermine the ecological and social systems upon which communities and societies are dependent (THFA S.11.4.5.9). The promotion of sustainable development is a requirement of a land use plan. The Plan emphasizes a sustainable local economy and value-based management directions that protect ecological, cultural, and social values at multiple scales. Development footprint thresholds provide clear limits to ensure that resource-based activities remain within sustainable bounds.

Stewardship:

All land users share responsibility towards the land, and the Tr'ondëk Hwëch'in hold ancestral stewardship responsibilities. Stewardship is expressed through actions that maintain healthy land, water, and wildlife for future generations. It includes minimizing harm, restoring damaged ecosystems, creating positive impacts, fostering land-people relationships, and supporting governance and educational initiatives.



Artwork: Yukon Graphic Recording

Precautionary Principle:

Given uncertainties in ecological and social systems, the Plan applies the precautionary principle (when human or environmental health is at risk, proactive steps must be taken to prevent harm, even in the absence of full scientific certainty). It does this through use of the mitigation hierarchy (avoid, minimize, restore, offset), proactive regulatory measures, discouraging high-risk technologies, and employing tiered thresholds that trigger early management responses before values reach critical decline.

Adaptive Implementation:

The Plan should be adjusted over time based on new information, monitoring results, evolving community priorities, and changing environmental conditions. Adaptive implementation pairs flexibility with a stable framework of values, designations, and directions, ensuring that decisions remain effective and relevant while retaining clarity and certainty for land users.

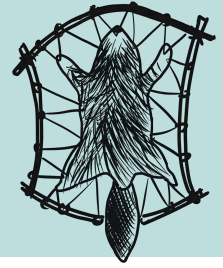
The Plan uses four tools to implement its principles and vision and to guide land use decisions across the Region:

- ▶ Management Directions and Values (Section 5 of the Plan)
- ▶ Cumulative Effects Management (Section 3 of the Plan)
- ▶ Access Management (Section 4 of the Plan)
- ▶ Landscape Management Units & Land Designation System (Section 6 of the Plan).



Photo: Dawson Regional Planning Commission

Management Directions and Values



All land use guidance is organized around 12 values that describe what matters most to people in the Region (e.g., caribou, water, heritage, sustainable local economy). Focusing management directions on values supports decision-makers in managing cumulative effects, working towards long-term goals, and adapting to changing conditions.

The values are presented in three groupings for ease of reading, but all are interconnected and all are important. Management Directions are divided into Stewardship Directions (for anyone on the land), Implementation Actions and Governance Recommendations for the Parties, and Knowledge Gaps to guide future research.

Community, Culture, and Heritage Values



These values focus on relationships between people and the land, cultural continuity, shared history, language revitalization, and the wellbeing and resilience of communities. They emphasize stewardship, respect for multiple worldviews, intergenerational learning, and the protection of Tr'ondëk Hwëch'in culture and heritage as living, evolving systems.

- **Land-People Relationship** recognizes the deep interdependence between healthy land and healthy people. It emphasizes stewardship, access to the land, the continuation of harvesting practices, and Tr'ëhudè as a guiding worldview. Sustaining these relationships requires intact ecosystems, responsible land use, and support for intergenerational knowledge transfer.
- **Community Culture** reflects the diverse, evolving identities of all residents, combining Indigenous and non-Indigenous histories, worldviews, and traditions. Management directions encourage respect across cultures, inclusive storytelling, protection of historic resources, and broad understanding of the Tr'ondëk Hwëch'in Final Agreement as a foundation of shared governance.
- **Tr'ondëk Hwëch'in Culture, Heritage, and Hän Language** affirms Tr'ondëk Hwëch'in's right to define and protect their heritage—places, stories, practices, language, and relationships with the land. It highlights the need for caution in land use, respect for cultural sites, Hän language revitalization, and recognition of heritage as living and dynamic, not static or in the past.



- **Community Resilience** focuses on the ability of people and infrastructure to adapt to environmental, social, and climate change. It emphasizes safety, food, energy and water security, climate preparedness, social impacts of development projects, healthy workplaces, and strong local capacity to adapt.

Environment



Environment values encompass the health and integrity of water, wildlife, vegetation, landscapes, and ecosystems. Recognizing that ecological integrity is foundational to community wellbeing and sustainable harvest, these values support climate resilience, biodiversity protection, and cumulative effects management across a changing landscape.

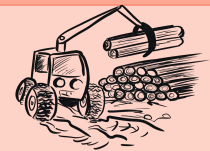
- **Water / Chu** is central to ecological health, cultural identity, and community use, yet highly sensitive to disturbance. The Plan stresses holistic watershed stewardship, protection of drinking water, salmon habitat, groundwater systems, wetlands, and cultural use along rivers. It calls for rigorous mitigation, climate-aware planning, and integrated governance across agencies.
- **Plant and Animal Relations** recognizes the ecological, cultural, and subsistence importance of the Region's biodiversity. Directions aim to maintain habitat integrity, prevent habitat fragmentation, avoid the introduction of invasive species, apply the mitigation hierarchy, and integrate Indigenous and Western science to manage activities that affect wildlife and climate-driven change.
- **Salmon / Tr'ojà'** are sacred to the Tr'ondëk Hwëch'in, vital to food security, culture, and ecological systems, but threatened by historic declines. The Plan prioritizes strong protections for spawning and rearing habitat, limits disturbance during sensitive life stages, strengthens monitoring and restoration recommendations, and coordinates governance across multiple jurisdictions.
- **Caribou / Wëdzey** require large, connected landscapes; the Plan includes overlays for migratory and woodland herds, strict mitigation requirements, lichen monitoring, directions to avoid key habitat, and adaptive management based on herd-level data. It prioritizes safeguarding migration routes and minimizing cumulative disturbance.
- **Moose / Jëjik** are culturally and economically essential to the Region, requiring protection of calving areas, movement corridors, mineral licks, and key habitats during late winter. Directions minimize new access, manage harvest pressure, and integrate local knowledge and monitoring to sustain healthy populations under changing climate conditions.

- **Landscapes**—including forests, mountains, and Beringian habitats—provide the ecological structure that supports biodiversity, water systems, cultural practices, and climate resilience. The Plan emphasizes minimizing fragmentation, protecting rare and sensitive ecosystems, maintaining connectivity, and integrating climate-risk considerations into all land use decisions.
- **Wetlands** provide crucial water regulation, habitat, carbon storage, and cultural value. Because peat wetlands are difficult or impossible to restore, the Plan applies a strict mitigation hierarchy (avoid–minimize–reclaim–offset), identifies Wetlands of Special Importance, and requires mapping, monitoring, and buffers tailored to wetland type.



Sustainable Economy

Sustainable Local Economy is a diverse, locally beneficial, multigenerational economy rooted in land stewardship. Directions for this value emphasize economic activities—both traditional and modern—that respect ecological limits, minimize land use conflict, and contribute to long-term community resilience rather than short-term gains.



The following land-based activities either currently contribute to a sustainable local economy or may do so in the future.

- **Tourism** – A major contributor to the local economy, combining cultural experiences, wilderness recreation, Gold Rush history, and arts to create year-round and seasonal employment.
- **Outfitting** – A longstanding economic activity involving guided hunting and wilderness experiences, supporting local jobs, and maintaining backcountry presence while relying on healthy wildlife populations.
- **Trapping** – A long-established land-based livelihood embedded in the traditional and local economy, providing income, cultural continuity, stewardship presence, and deep knowledge of wildlife and seasonal change.
- **Forestry** – A renewable resource sector guided by the Dawson Forest Resources Management Plan, supplying timber and supporting local jobs while relying on well-planned access and responsible harvest.
- **Agriculture** – A growing sector supported by favourable river valley soils and community demand, enhancing regional food security and local economic self-reliance.

- **Mineral Exploration** – A foundational economic activity that identifies future resource potential and supports local employment, while requiring careful access planning and low impact techniques to protect ecological and cultural values.
- **Placer Mining** – A longstanding, land-based industry that remains a major economic driver in the Region, providing significant local employment and supporting many secondary businesses.
- **Quartz Mining** – An activity with high potential but requiring strict safeguards due to greater environmental and social risks, emphasizing careful assessment and sustainable practices.
- **Fishing** – A culturally and economically important activity historically centered on salmon, now constrained by stock declines but still vital for cultural and community wellbeing, and future sustainable opportunities tied to ecosystem recovery.
- **Oil and Gas** – A sector with geological potential but no current active development due to remoteness, infrastructure limitations, environmental sensitivity, and climate considerations, requiring stringent assessment if proposals emerge.
- **Renewable Energy** – Emerging opportunities such as solar, biomass, and other renewable projects that reduce diesel dependency and support long-term sustainability.



Photo: Government of Yukon

Cumulative Effects Management



Cumulative effects are the combined impacts of past, present, and future human activities and natural processes on what people value in the Region. Cumulative effects management is necessary because assessing impacts project-by-project misses the way multiple stressors add up, especially for sensitive values. The Plan includes a values-based cumulative effects framework that is designed to evolve over time as new knowledge, tools, and capacity emerge.

The Plan's values, chosen through community and partner engagement, anchor this framework. All other components—indicators, thresholds, monitoring programs, and responses—including those yet to be developed, are built around them.

The Plan's cumulative effects framework provides tools for immediate management of cumulative effects, and also a blueprint to guide a shift toward proactive, values-driven management, complementing YESAA's requirement to consider cumulative effects. This blueprint identifies and directs the development and adoption of the components required for a fully functioning system.

The cumulative effects framework is foundational to conformity determinations, stewardship, access planning, LMU thresholds, and reclamation—and will continue evolving as indicators, thresholds, monitoring programs, and knowledge mature.

Indicators and Thresholds

The Parties (Yukon Government and Tr'ondëk Hwëch'in) are responsible for building these components together. Early implementation will rely heavily on broad-scale indicators of development; over time, the framework will include more indicators for more values, producing clearer early-warning signals for value health.

Two Region-wide indicators are currently available:

1. Linear Feature Density (LFD) – km of roads or trails per km²
2. Surface Disturbance (SD) – % area disturbed by human activity

These indicators are practical, measurable with satellite data, and immediately usable in project assessments. Although not fully relevant to every value, they provide an essential first layer of cumulative effects management while value-specific indicators are developed.



Tiered thresholds (advisory, cautionary, and critical) define target, acceptable, and unacceptable levels of development for each LMU. Each threshold has different management goals.



These thresholds were developed considering:

- Wildlife sensitivity
- Existing disturbance levels, and
- Projected development trends.

Future value-based indicators will also need tiered thresholds to direct what types of management are required to keep values healthy, or in their 'target range'. Thresholds must reflect Indigenous and Western knowledge, follow the precautionary principle, and be set conservatively to prevent irreversible harm.

Monitoring, Assessment, and Response



For managers to be able to respond to value health or development level, indicators must be monitored. Monitoring is essentially data collection, but monitoring the right things, and getting the information to the right people, requires coordination between governments, industry, community monitors, and existing programs. Monitoring feeds into assessment of value health (for example, during a YESAB assessment) and guides responses.

Responses escalate as value health worsens, or as indicator levels become unacceptable. For example, when a value is in the target range, responses may include continued stewardship and improving knowledge. If a value reaches the critical range, responses are urgent, and may include stopping activities.



Photo: Government of Yukon

Cumulative effects management must be adaptive. The Parties must periodically evaluate:

- Whether values are being protected,
- Whether indicators are functioning effectively, and
- Whether cumulative effects management is being integrated into project assessment and land use planning.



Reclamation

Reclamation is essential to reducing longterm impacts and returning land to functionality. The Plan establishes a five-step reclamation framework with credit allocations from 10% to 100% depending on the level of ecological and cultural recovery achieved.



Reclamation:

- Is values-based and tailored to LMU priority values
- Can only subtract area from development footprint if it meets minimum standards
- Requires assessments at 1, 5, 10, 25, 50, and 100 years



Photo: Dawson Regional Planning Commission

Access Management



Access is the movement of people and the transportation of materials by land, water, and air, and plays a critical role in human relationships with the land, positive and negative.

Access provides benefits (economic, cultural, recreational), and also poses risks (habitat fragmentation, harvest pressure, cultural impacts).

The Plan uses Access Management to guide how people move on the land and balance benefits with protecting values.

Access management plans are required for three LMUs and define access, decision-making roles, and monitoring requirements, must be jointly approved, and follow clear timelines and dispute-resolution steps if progress stalls.

Guidelines

Access Management Guidelines apply across the Region.

- All access must be managed in a manner centered on Plan values.
- On Settlement Land, access is managed exclusively by Tr'ondëk Hwëch'in.
- On Non-Settlement Land, access is co-planned and co-managed by the Parties.
- Wherever possible, existing access must be used rather than creating new disturbance, and any disturbed land or water must be restored.
- Access to traditional economic sites must receive elevated care.



The Plan includes specific *Access Management Directions* for existing roads, new roads, off-road vehicles, water access, and air access.

Plans

Access Management Plans are required where overlapping land uses and multiple routes create conflict or cumulative pressures. The Plan requires Access Management Plans be co-developed and approved by the Parties for:

- LMU 6 Tr'ondëk (Klondike)
- LMU 11 (Goldfields), and
- LMU 15 (Khel Dëk).



These plans will map access, set rules for access use and timing, and outline reclamation, monitoring, and mitigation strategies.

Landscape Management Units



The Region is divided into discrete areas of land called Landscape Management Units (LMUs).

land use, and planning issues. LMUs allow decision-making to reflect local conditions across the Region.

LMUs were defined based on ecological boundaries (e.g., watersheds, river systems), human-made features (e.g., highways, Settlement Land), patterns of

Section 6 of the Plan describes each of the 22 LMUs in the Region: 6 SMAs, 12 ISAs, 3 sub-regional planning areas, and 1 Excluded area.

Designations

Each LMU has a designation that reflects management needs and stewardship intent:



- **Integrated Stewardship Areas** host multiple land uses, such as cultural practices, recreation, wildlife habitat, and industrial activity. ISAs support both existing and future sustainable economic activities in alignment with the Plan's principles; the specific types and extent of activities allowed are guided by the LMU Directions. Each ISA is assigned a sub-designation (ISA 1- 4) that reflects its relative tolerance for development footprint.
- **Special Management Areas** are intended to be collaboratively planned under a THFA Chapter 10 process by the Parties (at a later date). Any Tr'ondëk Hwëch'in Settlement Land parcels within an SMA are excluded from the designation, reflecting Tr'ondëk Hwëch'in's sole jurisdiction in these areas. All SMAs are subject to permanent prohibition of entry for placer and quartz mining and are withdrawn from disposition for oil and gas; existing dispositions are honoured. Land use activities in SMAs are allowed in accordance with the LMU Directions.
- **Sub-regional Planning Areas** require sub-regional plans according to a THFA Chapter 11 process. Sub-regional plans are commission-led and run on a structured 18-month timeline. Three LMUs require sub-regional planning due to high levels of overlapping activities and interests: LMU 3: Chu Kon Dëk (Yukon River Corridor); LMU 12: Tr'ondëk Täk'it (Klondike Valley); LMU 13: Dempster Highway Corridor.

About each LMU



Each LMU section includes the same information:

- **LMU name and number**
- **Land Designation**
 - Integrated Stewardship Area (ISA, with sub-designations 1 to 4)
 - Special Management Area (SMA)
 - Sub-regional Planning Area
 - Excluded Area
- **Area:** the area of the LMU in km² and the percent (%) of the Region it covers.
- **Settlement Land:** a list or count of Tr'ondëk Hwëch'in Settlement Land parcels.
- **Intent Statement:** outlines the vision and intent for the LMU. It includes a description of the LMU and reasons for the land designation.
- **Tr'ëhudè and Stewardship:** considers each LMU through the lens of Tr'ëhudè and shares stories, Traditional Knowledge, or values. This section emphasizes the importance of the land to Tr'ondëk Hwëch'in Citizens and respects and upholds their relationship with the land. It also speaks to the community stewardship responsibilities of residents of the Region.
- **LMU Directions:** specific management directions that apply in the LMU in addition to directions that apply throughout the Region.
- **Priority Values:** Identifies the most important or at-risk values in the LMU. These values guide reclamation objectives and cumulative effects work and must be considered in project proposals and assessments.
- **Values:** Lists all Plan values and how they are represented in the LMU.



Artwork: Yukon Graphic Recording

Each LMU has a designation.

All LMUs have associated sets of surface disturbance thresholds and linear feature densities.

LMUs	Surface Disturbance (%)			Linear Feature Density (km/km ²)		
	Advisory	Cautionary	Critical	Advisory	Cautionary	Critical
ISA 1: 5, 19	0.0625	0.1875	0.25	0.0625	0.1875	0.25
SMA: 1, 4, 7						
ISA 2: 2, 6, 14, 17, 21	0.25	0.75	1.0	0.125	0.375	0.5
SMA: 10, 16, 20						
ISA 3: 8, 15	0.5	1.5	2.0	0.25	0.75	1.0
ISA 4: 9, 11, 18	1.0	3	4.0	0.5	1.5	2.0

Each SMA has an associated threshold that matches those of the ISA 1 or ISA 2, based on priority values and rationale for designation.

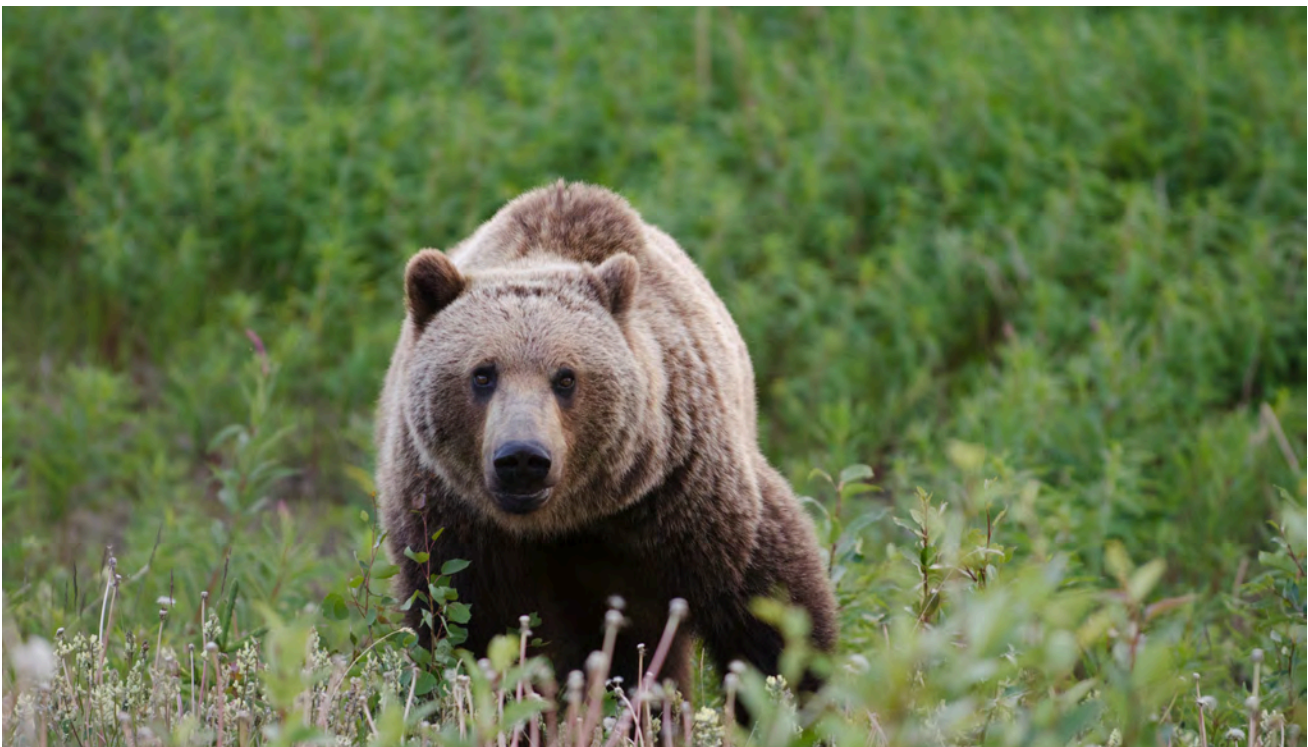


Photo: Government of Yukon

Implementation



Section 7 outlines how the Plan will be implemented, monitored, and adapted. The Parties co-manage implementation of the Plan: they apply and promote management directions, advance cumulative effects tools, collaborate on sub-regional plans, and are jointly responsible for monitoring, review, and adaptive changes.

The Commission remains active after approval, supporting conformity determinations, providing interpretation, participating in sub-regional planning,

and helping track progress and effectiveness through reporting and engagement.

Successful implementation requires strengthening technical expertise, communication tools, and community-based monitoring.

To ensure consistent, informed, and transparent decision-making across governments and communities, training, data systems, and support for Indigenous-led planning, and stewardship are required.

Conformity



The Commission conducts conformity determinations to identify whether proposals align with Plan directions and thresholds and whether value health remains protected. Projects that would lead to a critical threshold being crossed or severely threaten a value's health do not conform to the Plan. Workflow integrates with the YESAB Online Registry.

Implementation Priorities & Timeline



Year 1

- Launch LMU 3 sub-regional planning.
- Establish the values-based reclamation framework and centralized reclamation ledger.
- Begin development of value-based cumulative effects indicators; implement development footprint indicator monitoring and assessment; create public registries and governance structures for implementation.

Years 2-5

- Improve indicators and monitoring; adjust update frequency by LMU risk.
- Initiate LMU 12 sub-regional planning.
- Advance salmon, wetlands, water, and access stewardship tools, including Access Management Plans where required.
- Implement climate preparedness, disaster risk reduction, and infrastructure resilience measures.



Years 6-10

- Complete LMU 13 sub-regional plan.
- Use monitoring and indicator results to prepare for the 10-year Plan Review.

Reporting Requirements

Each year, the Parties and Commission will report on implementation progress, disturbance mapping, cumulative effects and reclamation, co-management experience, and conformity outcomes—creating a feedback loop to improve actions and tools.



At **Year 5**, a status review examines whether the Plan is achieving its intent, documents how development and stewardship have unfolded, and identifies emerging issues that may require adjustments.

At **Year 10**, a comprehensive review evaluates effectiveness, value health, thresholds and indicators, LMU designations and boundaries, and implementation performance. Reviews can occur sooner if major environmental or social changes warrant it.



Photo: Dawson Regional Planning Commission

