



White River First Nation Conservation Priorities within the Dawson Regional Land Use Planning Area



Madison Guthrie - White River First Nation



Overview

- Purpose
- Context and background
- Conservation Priorities
- Questions



Purpose

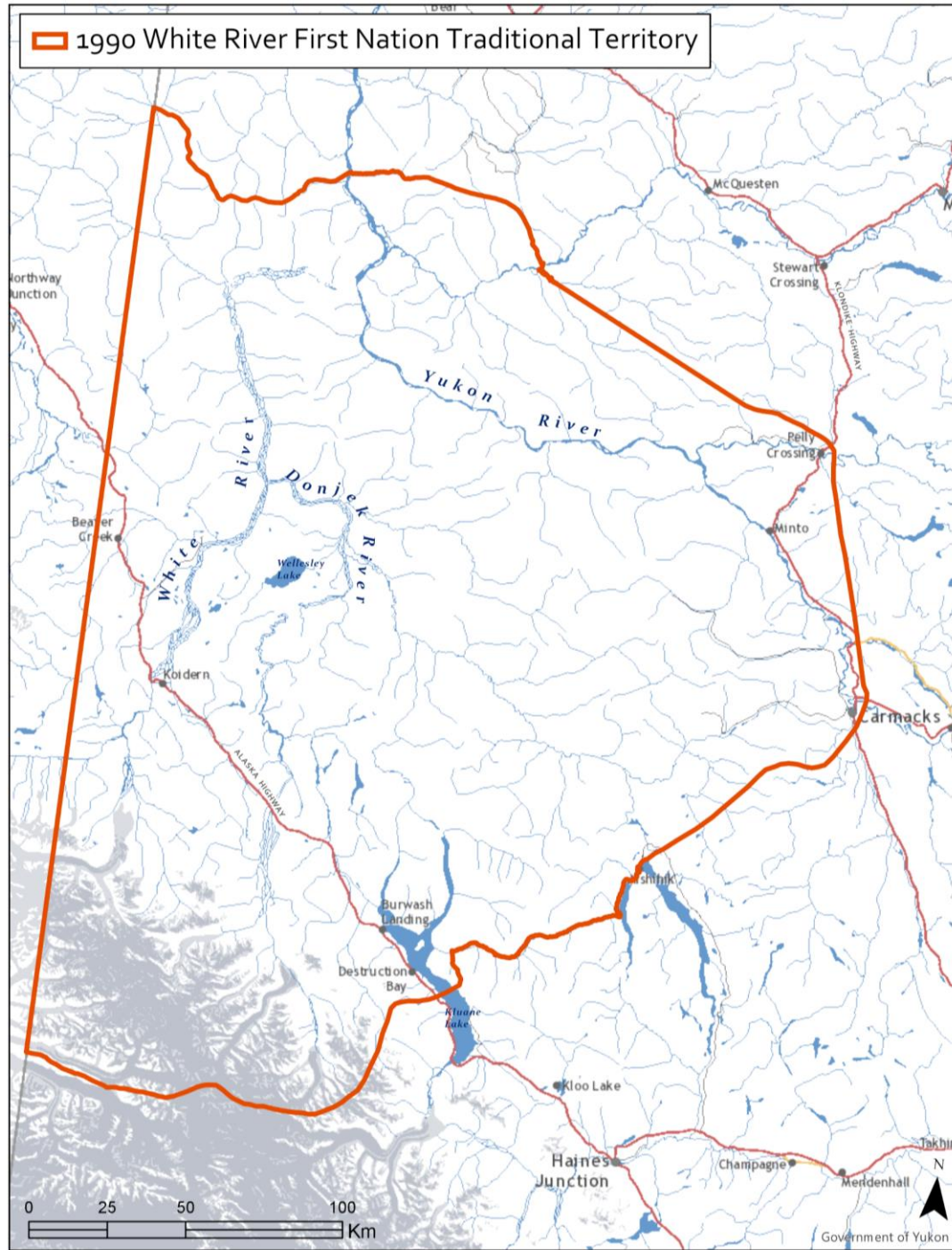
- Identify WRFN conservation priorities within Dawson Planning Region
- Provide recommendations for the Commission based on WRFN interests
- Begin a dialogue with the Commission prior to finalizing the Draft Plan



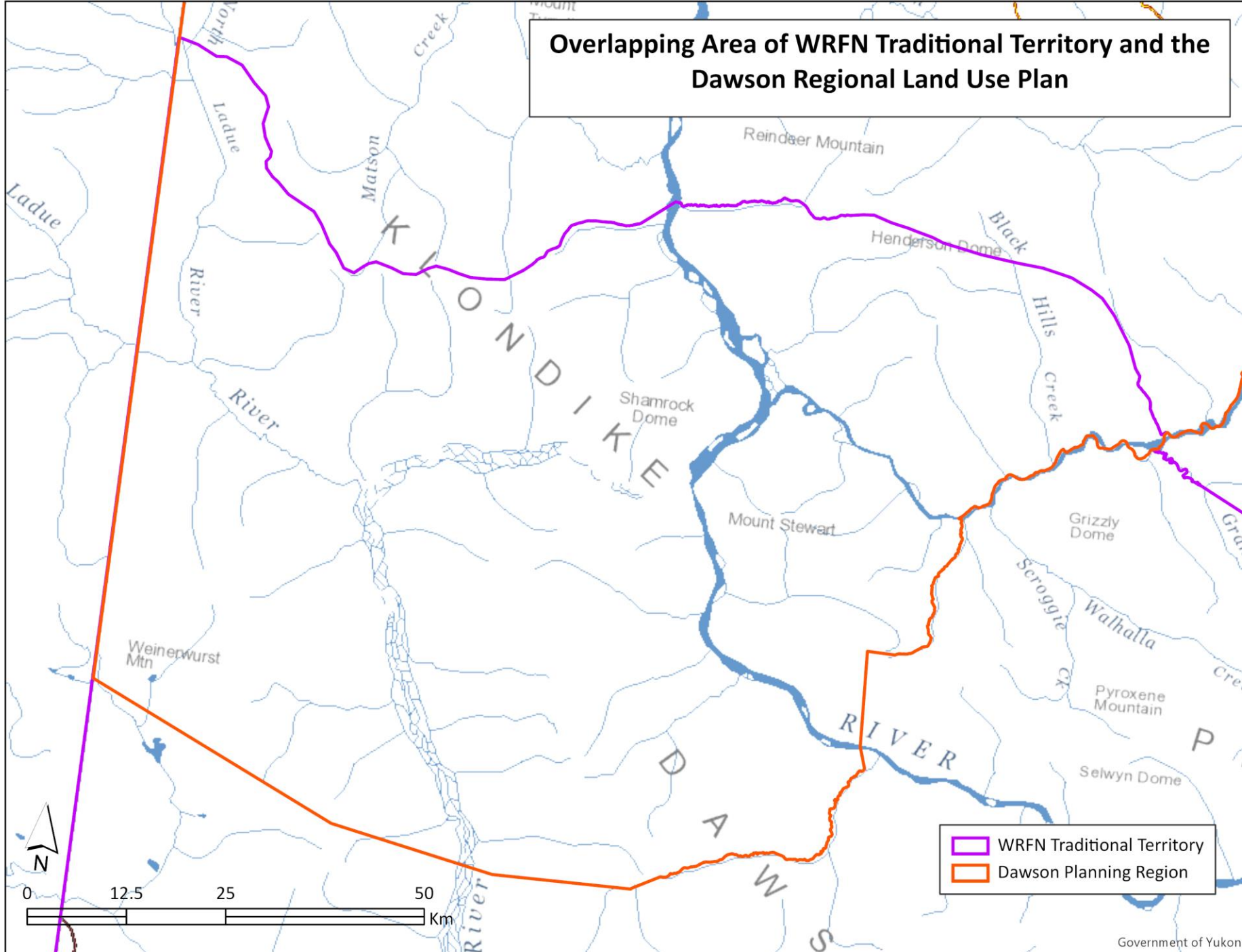
Background – WRFN Traditional Territory

- WRFN asserted Traditional Territory
- Interim Protected Lands/Settlement Lands
 - Selected parcels in Dawson Planning Region

1990 White River First Nation Traditional Territory



Overlapping Area of WRFN Traditional Territory and the Dawson Regional Land Use Plan



WRFN Traditional Territory
Dawson Planning Region



Conservation Priorities

- TH conservation priorities
- Interviewed WRFN membership
- Limitations
- Reviewed past Traditional Land Use Studies and other historic documents

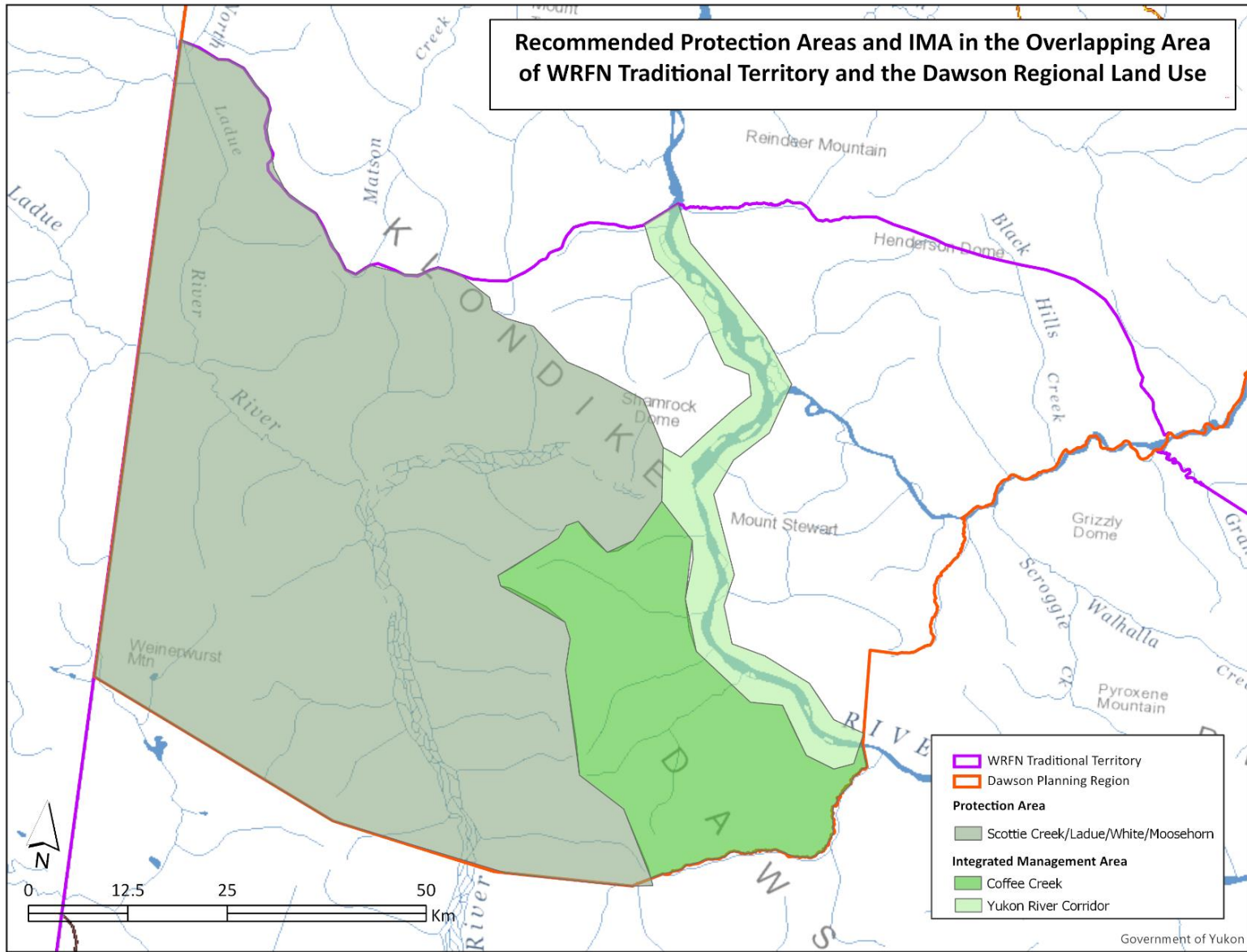


WRFN Conservation Priorities

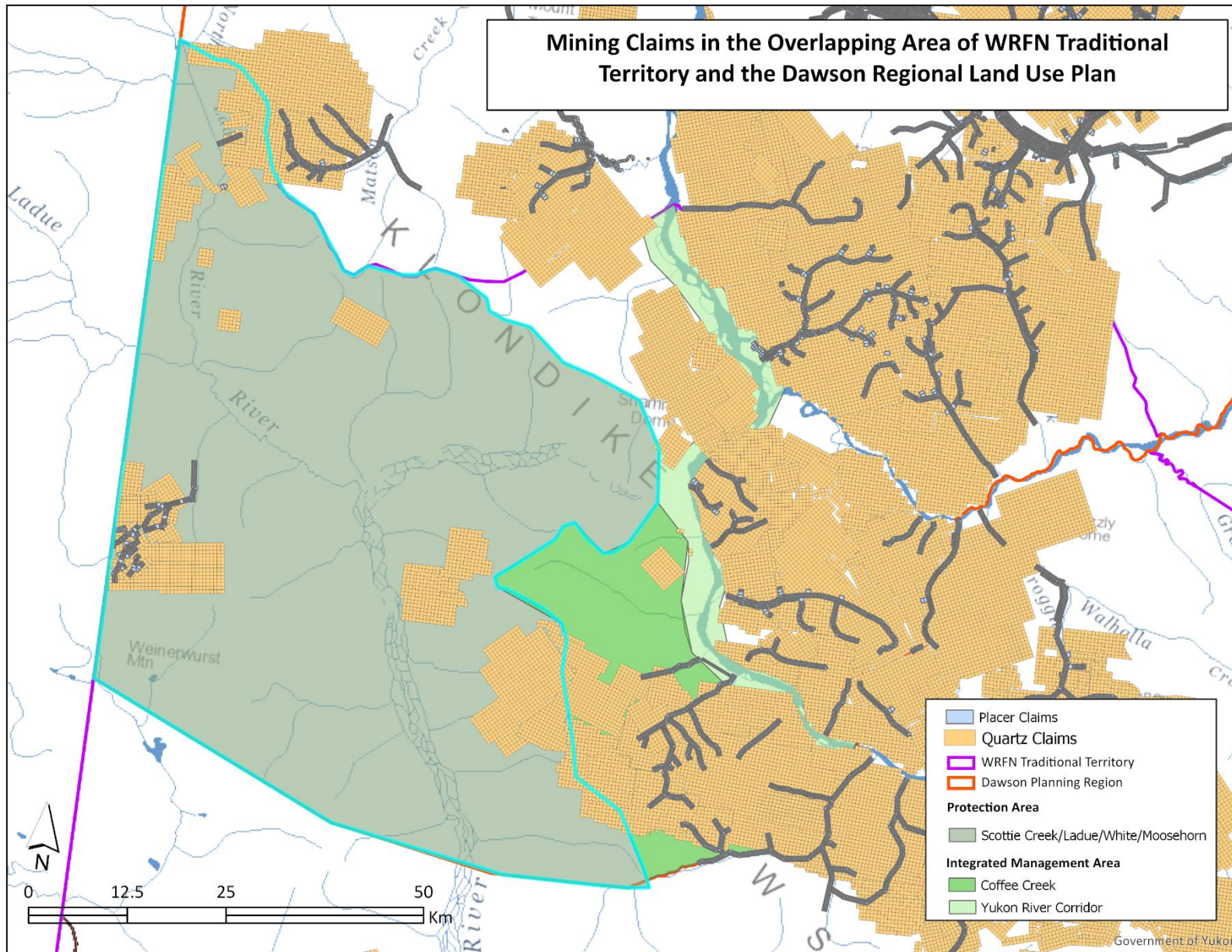
White River

- White River Landscape Management Unit
 - Scottie Creek Wetlands, Moosehorn Mountains, Ladue River, White River Corridor
- Recommendation: **Protection**
 - Limited third party interests
 - Ecological value
 - WRFN rights, title, and interest

Recommended Protection Areas and IMA in the Overlapping Area of WRFN Traditional Territory and the Dawson Regional Land Use



Mining Claims in the Overlapping Area of WRFN Traditional Territory and the Dawson Regional Land Use Plan





WRFN Conservation Priorities Yukon River Corridor

- Yukon River Corridor Landscape Management Unit
 - White Gold District

- Recommendation: **Integrated Management Zone with strict management directions**
 - Lots of third party interests
 - Ecological value
 - WRFN rights, title, and interest



WRFN Conservation Priorities Coffee Creek

- Coffee Creek Landscape Management Unit
- Recommendation: **Integrated Management Zone with very strict management directions and low tolerance for development**
 - WRFN rights, title, and interests
 - Existing third party interests



Summary Recommendations

- Designate the Ladue River, White River, Scottie Creek Wetlands, and Moose Horn Range as a protected area
- Designate the Yukon River Corridor (within White Gold District) as an Integrated Management Area with strict management directions
- Designate Coffee Creek as Integrated Management Area with very strict special management directions



Conclusion

- Mesē cho, Tsin'ij̄ choh for your time
- Providing Commission with a written submission that goes into further detail
- WRFN open to further conversations with Commission



Questions from Commission

