

# Heritage Values in the Dawson Region



Presentation to the Dawson Regional Planning Commission  
By the Department of Tourism and Culture  
October 26, 2021





# Overview

- **Defining Heritage Values:**
  - Heritage as a way of life
  - Palaeontology
  - Archaeology
  - Historic Sites
  - Yukon Geographical Place Names
  - Heritage Routes
- **Links to other processes**



# Defining heritage values:

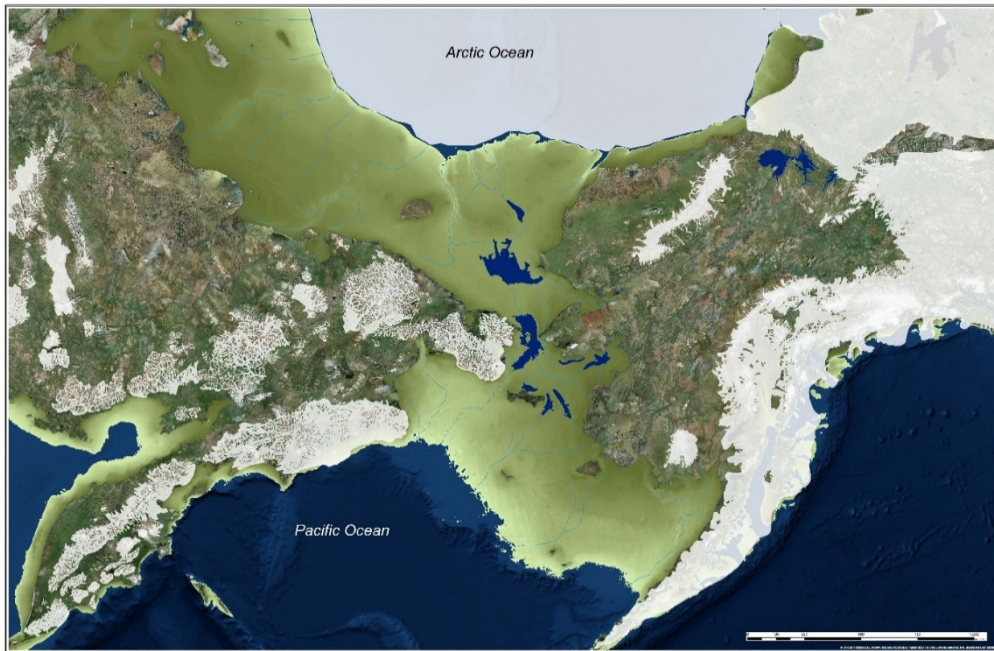
- For the Tr'ondëk Hwëch'in, heritage is a way of life reflected in the beliefs, values, knowledge and practices passed on from generation to generation
- More than physical heritage resources
- Includes: significant places, harvestable resources and traditional activities

# Heritage Working Group



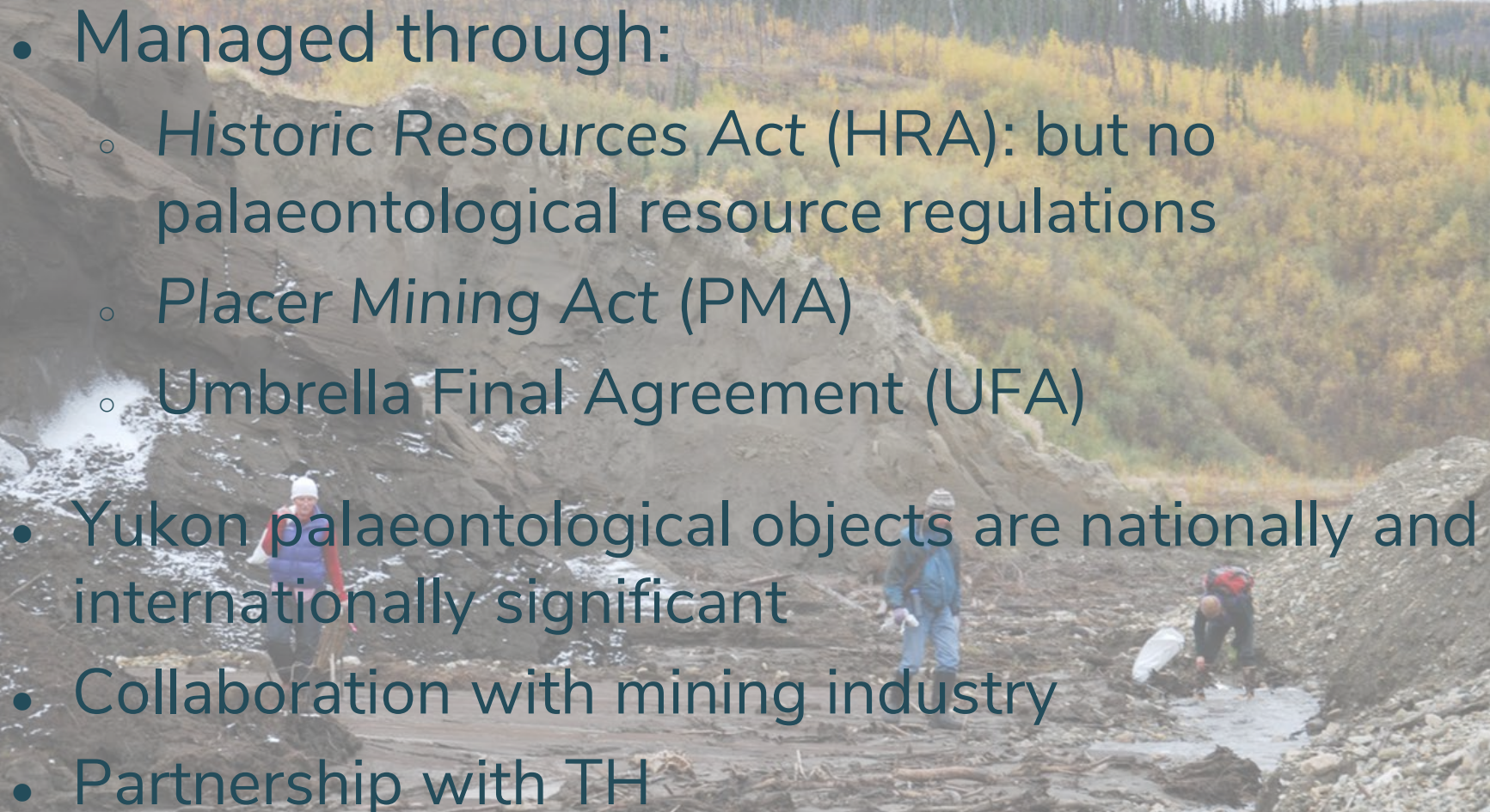
Memorandum of Understanding Regarding Collaboration in Heritage Management (the “MOU”) was signed in 2019 at the Yukon Forum and establishes the formal process for collaboration on heritage management

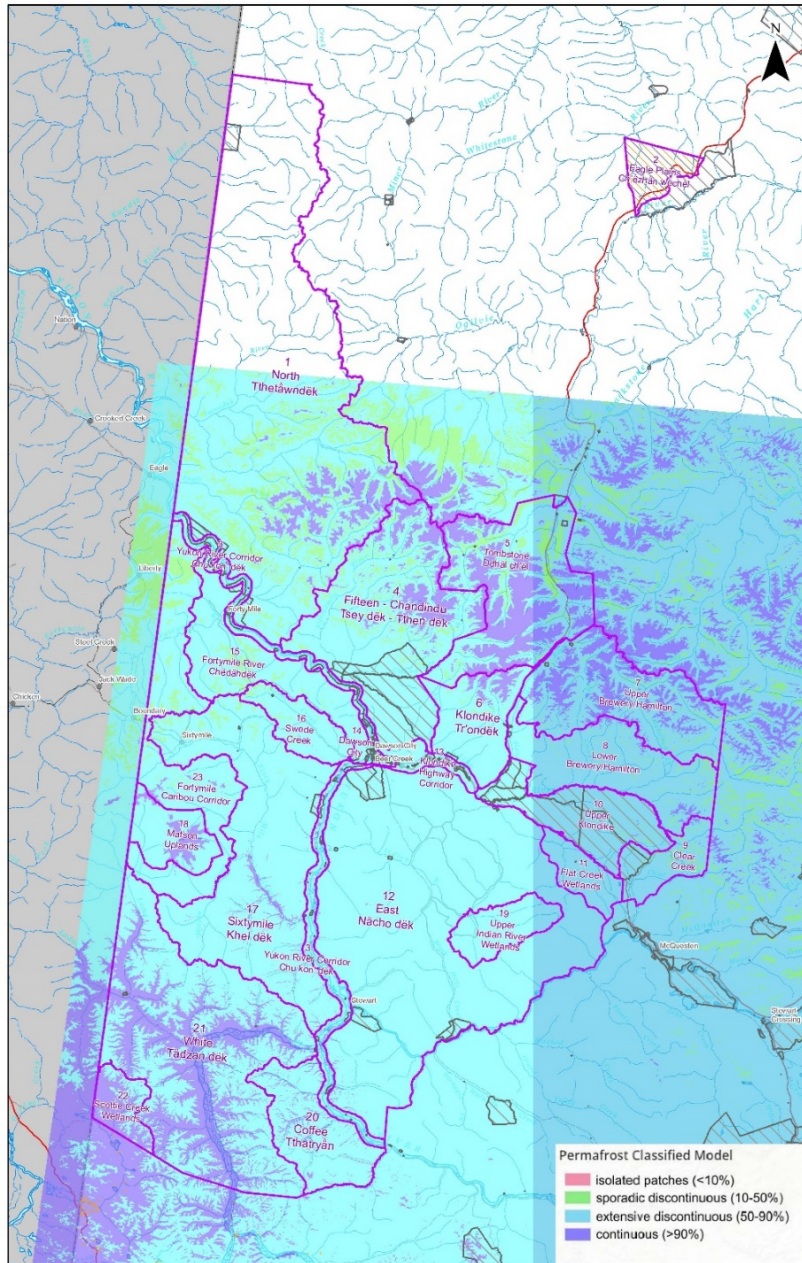
# Beringia





# Palaeontological Resources & Values

- Managed through:
    - *Historic Resources Act (HRA)*: but no palaeontological resource regulations
    - *Placer Mining Act (PMA)*
    - *Umbrella Final Agreement (UFA)*
  - Yukon palaeontological objects are nationally and internationally significant
  - Collaboration with mining industry
  - Partnership with TH
- 
- A background photograph showing a wide, muddy riverbed in a mining area. Several people wearing hard hats and work clothes are visible, some standing and others working near the water. The surrounding landscape is hilly with sparse vegetation and evergreen trees in the distance.



## Map of permafrost regions in the Dawson Planning Region

There is a high probability of locating palaeontological resources in permafrost

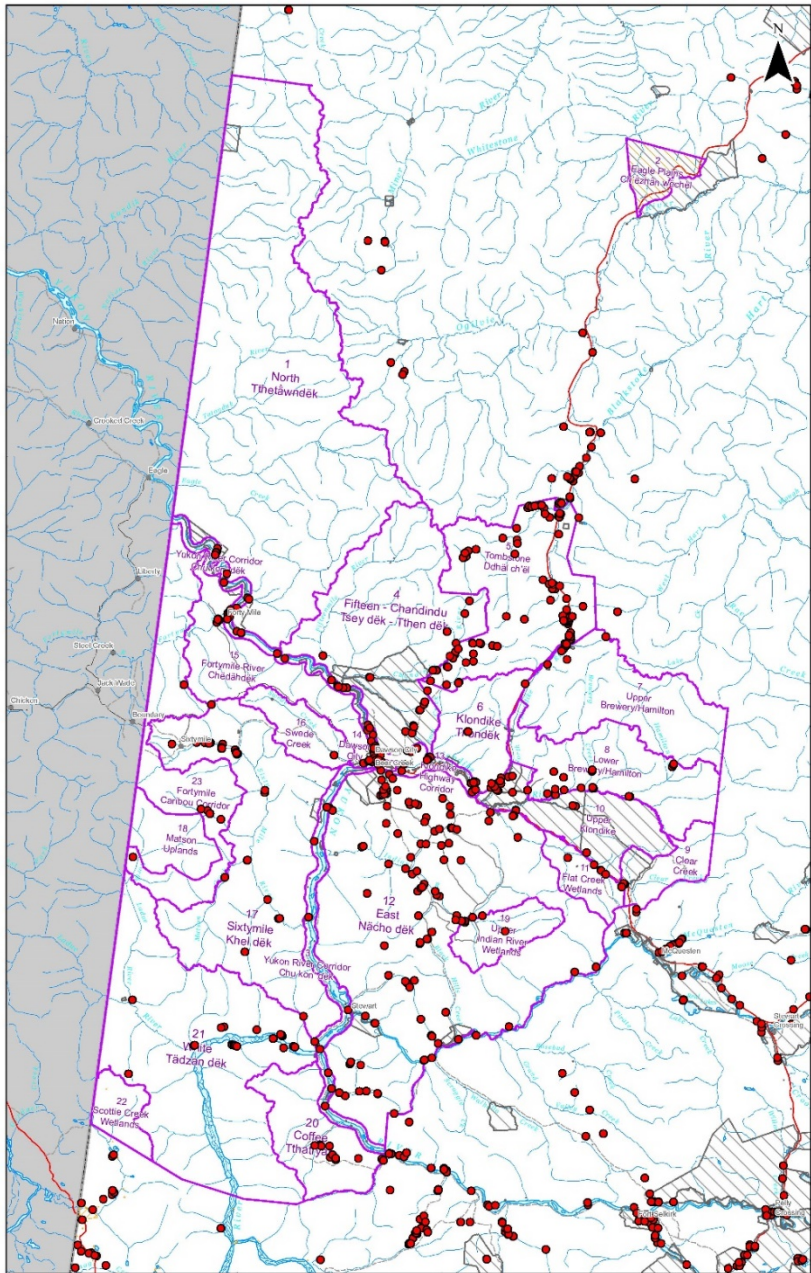


## Archaeological Resources & Values



# Archaeological sites

- Just under 500 documented archaeological sites in the DRLUP region
  - Many identified through heritage assessments conducted by industry
- FN and land use history spanning 15,000 years
  - Many sites consistently used for thousands of years (e.g. Moosehide Village)



## Map of documented archaeological sites

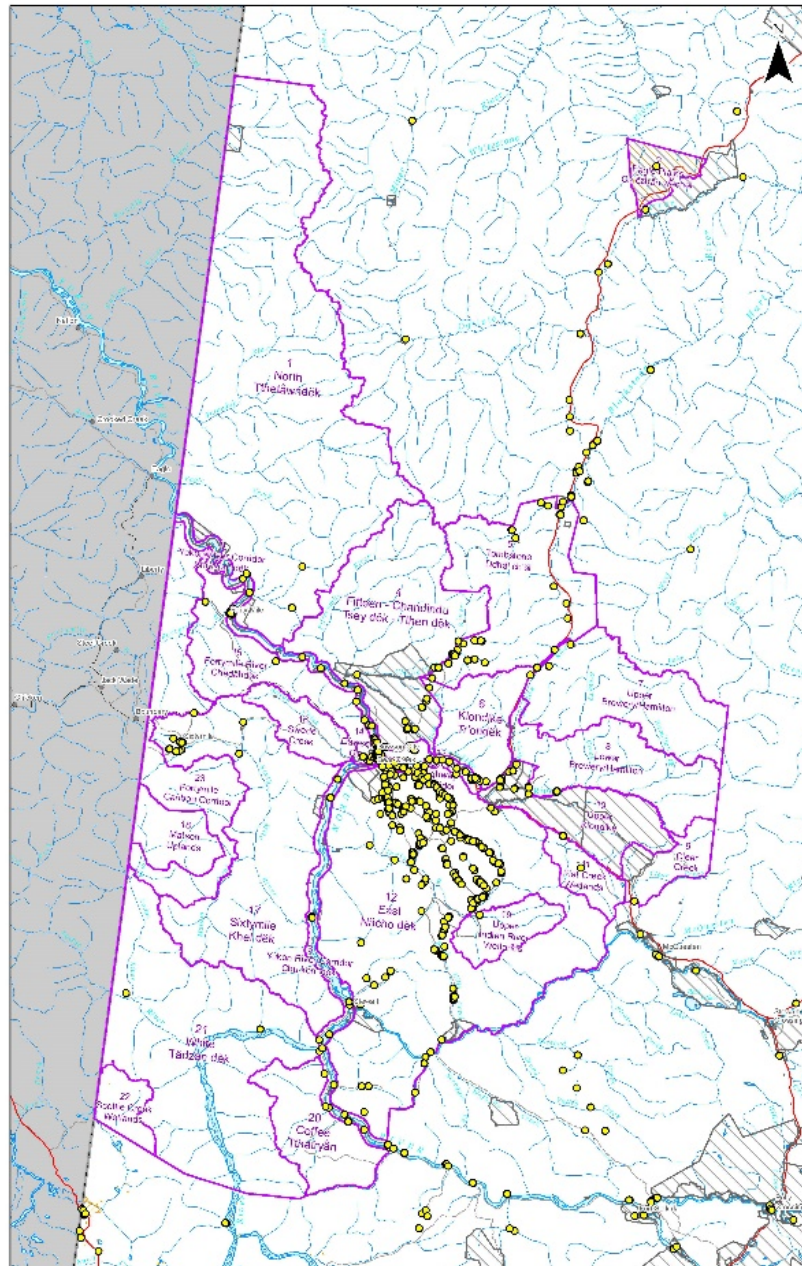


## Historic Sites Values

# Historic Sites

- Historic sites include buildings, structures, trails, cultural landscapes, etc.
- Heritage Reserves identify areas of heritage significance (e.g. Ridge Road Heritage Trail)
- Management processes include conservation, gradual decline and/or interpretation





## Map of documented historic sites

# YUKON'S HERITAGE RESOURCES ARE ALL PROTECTED BUT MANAGED DIFFERENTLY

*Here's why:*

## Historic resources

Can be identified by a lay-person.

Artefacts may be:

- located above ground;
- in varying stages of decay; and
- vulnerable to disturbance.

Resources include:

- cabins and equipment (structure and features); and
- tools, hardware, bottles and cans (objects).

## Archaeological resources

Usually identified by an archaeologist.

Artefacts may be:

- small and difficult to identify;
- located just below the surface; and
- vulnerable to disturbance.

Resources include:

- stone tools;
- ancient hearths; and
- remains of plants and animals consumed by people.

## Palaeontological resources

Large specimens can be identified by a lay-person.

Fossils may be:

- deeply buried;
- difficult to identify in advance; and
- exposed during overburden removal.

Resources include:

- plant and animal fossils;
- articulated skeletons; and
- permafrost containing tusks, bones, seeds and soft tissues.



### Historic and archaeological resources

Must be identified and managed during project planning.

### Palaeontological resources

Can be managed as encountered. Unusual finds should be reported immediately.

Heritage Resources Unit

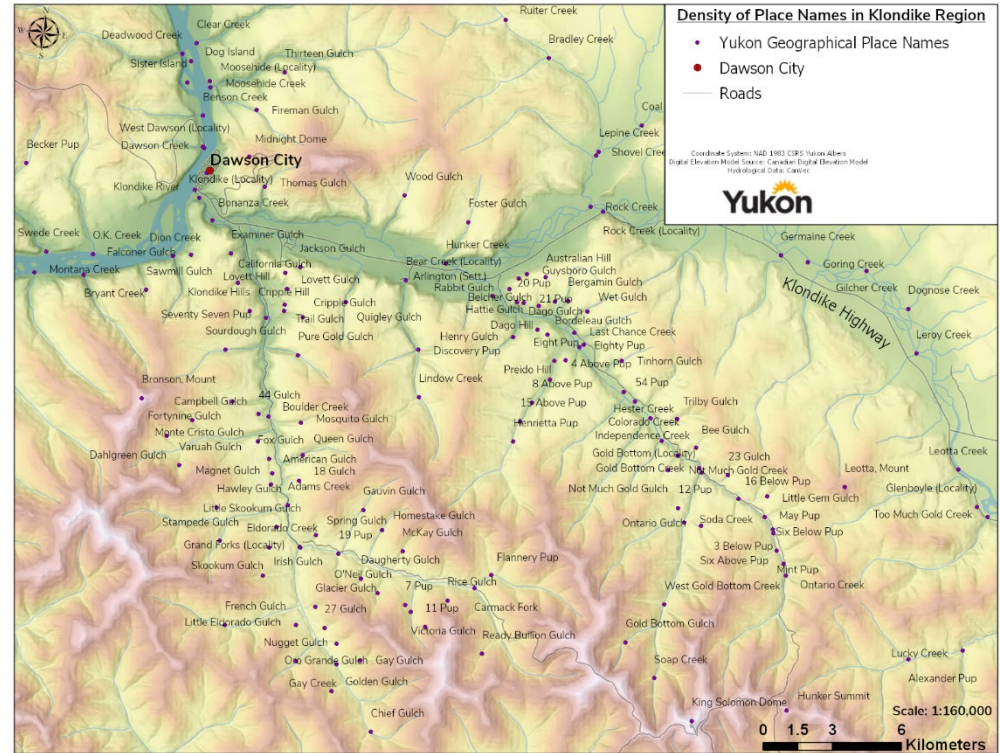
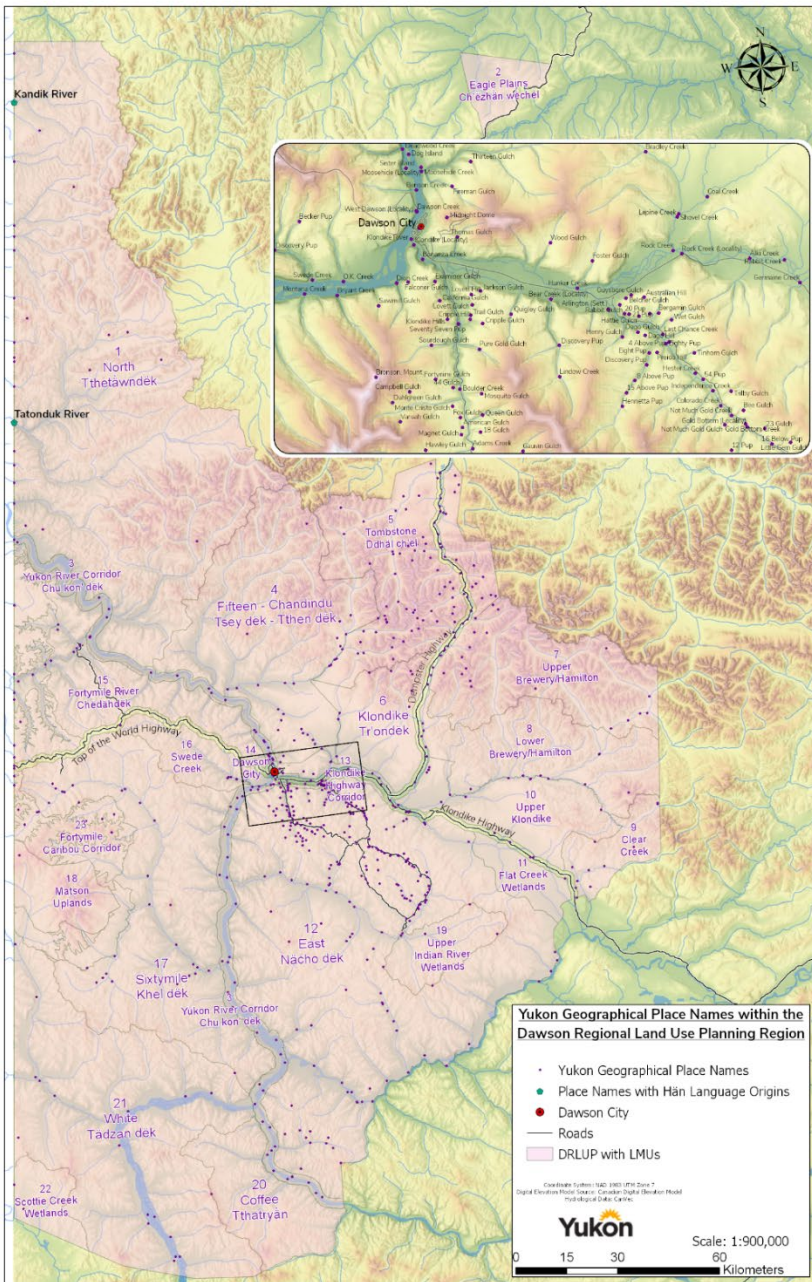
Contact us if you discover a heritage resource or want more information | 867-667-3771 | [heritage.resources@gov.yk.ca](mailto:heritage.resources@gov.yk.ca) | [yukon.ca/arts-and-culture/heritage](http://yukon.ca/arts-and-culture/heritage)

 Yukon



**Heritage Resources are Non-Renewable**

# Yukon Geographical Place Names





## Heritage Routes

It is important that heritage routes are understood not as isolated linear values (i.e. “lines on a map”), but rather as part of an integrated cultural landscape. Routes connect important places, like a web that covers YFNs’ Traditional Territories. So stewardship of heritage routes and other sites goes hand-in-hand. Put another way, there is no point taking care of one without the other, or the whole web may be damaged.

Yukon First Nations Heritage Routes: Opportunities and Challenges, June 2020



# Summary



A two-story log cabin with a corrugated metal roof. The cabin is built from dark, weathered logs. It has four windows: two on the upper floor and two on the lower floor. The central door is made of light-colored wood. A person wearing a red jacket and a backpack is standing by the lower right window, looking out. The cabin is surrounded by trees and a grassy area. In the top right corner, there are decorative wavy lines in green, blue, and purple. A semi-transparent white box with the word "Questions?" is overlaid on the middle of the image.

Questions?