

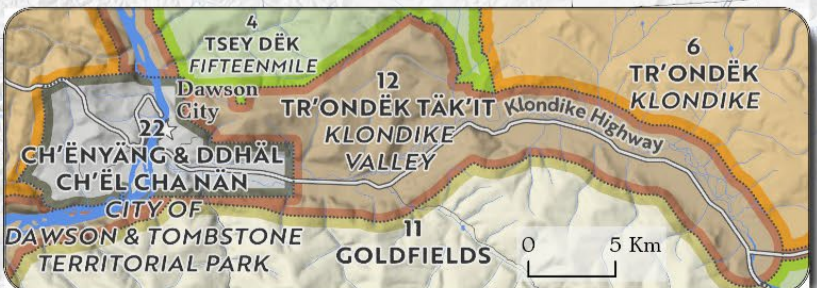
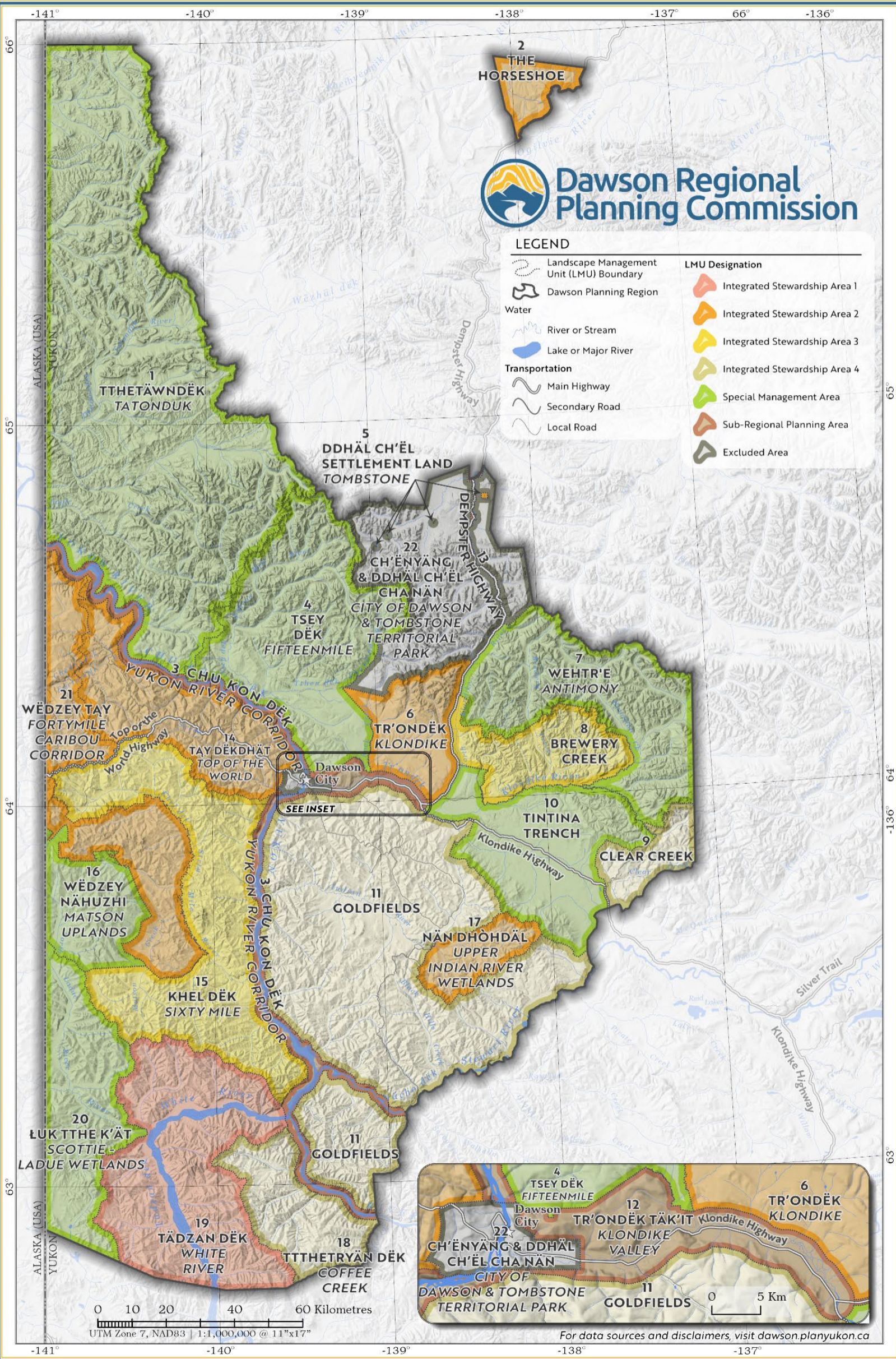
# Final Recommended Dawson Regional Land Use Plan



**Dawson Regional  
Planning Commission**

## LEGEND

- |  |                               |
|--|-------------------------------|
| Landscape Management Unit (LMU) Boundary | <b>LMU Designation</b>        |
| Dawson Planning Region                   | Integrated Stewardship Area 1 |
| River or Stream                          | Integrated Stewardship Area 2 |
| Lake or Major River                      | Integrated Stewardship Area 3 |
| Main Highway                             | Integrated Stewardship Area 4 |
| Secondary Road                           | Special Management Area       |
| Local Road                               | Sub-Regional Planning Area    |
|  | Excluded Area                 |



UTM Zone 7, NAD83 | 1:1,000,000 @ 11"x17"

For data sources and disclaimers, visit [dawson.planyukon.ca](http://dawson.planyukon.ca)

# Final Recommended Dawson Regional Land Use Plan

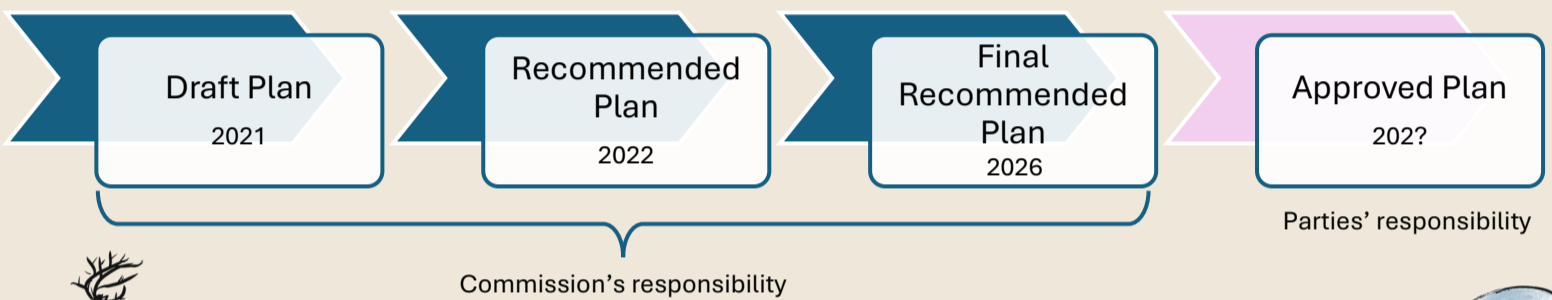


Nän kāk ndä tr'ädäl – On the land we walk together

The Dawson Regional Planning Commission is proud to share the Final Recommended Dawson Regional Land Use Plan. We are a group of six dedicated community members who have worked hard to bring together the diverse perspectives in the Region in the name of land stewardship. We look forward to the Parties' public engagement on this Plan and to the timely finalization of an Approved Plan. We are committed to stewarding the Approved Plan into the future.

The creation of this Plan is a meaningful way to implement the Tr'ondëk Hwëch'in Final Agreement. This Plan is for all Tr'ondëk Hwëch'in Citizens, Dawson City and Yukon residents, and visitors to the Region.

The Plan is a living document, an ongoing process, and a guide for relating to and stewarding the land.



The Plan focuses on 12 Values that reflect what is important to the community.

- Plant and Animal Relations
- Sustainable Local Economy
- Community Culture
- Community Resilience
- Moose/Jëjik
- Tr'ondëk Hwëch'in Culture, Heritage, and Hän Language
- Salmon/Tr'ojà'
- Caribou/Wëdzey
- Wetlands
- Land–People Relationship
- Landscapes
- Water/Chu



The Plan protects these values through **Stewardship Directions** that everyone must follow, **Governance Recommendations** and **Implementation Actions** for the Parties to complete, and **Knowledge Gaps** to guide research.

**Access management** guidance directs the use, development, and management of different types of access across the Region. **Cumulative effects and reclamation frameworks** provide immediate tools and blueprints for better managing cumulative effects and incentivizing and guiding future reclamation. This supports long-term **sustainable development** in the Region.



This Plan is grounded in **co-management**. Tr'ondëk Hwëch'in and the Government of Yukon should work together as equal and respectful partners to bring the vision and intention of this Plan to life.



**What's next?** Tr'ondëk Hwëch'in and the Government of Yukon will be asking for your opinion on this Plan. Stay tuned for details about when and how.

