

Dawson Regional Planning Commission
Landscape Management Units | Map 1.1
 Final Recommended Plan

LEGEND

- Landscape Management Unit (LMU) Boundary
- Dawson Planning Region
- Water**
- River or Stream
- Lake or Major River
- Transportation**
- Main Highway
- Secondary Road
- Local Road
- LMU Designation**
- Integrated Stewardship Area 1
- Integrated Stewardship Area 2
- Integrated Stewardship Area 3
- Integrated Stewardship Area 4
- Special Management Area
- Sub-Regional Planning Area
- Excluded Area

File & Layout: DRPC Final Plan Projects | Map01to08_LMU_Data_and_Designations | 2026-03-19 | Cartography: Borealis Geomatics

Data sources: Maps in this series includes base and thematic data provided by NRCan, GeoYukon (Yukon Government), Tr'ondëk Hwëch'in Government, US National Parks Service, Ducks Unlimited Canada, YLUPC, NYPC, PWPC, or DRPC. **Data disclaimer:** This map is a graphical representation depicting the approximate size, configuration, and spatial relationship of geographic features. Some datasets have specific disclaimers available from the data provider. While great care has been taken to ensure the best possible quality, this document is neither intended for legal descriptions nor to calculate precise areas, dimensions, or distances. It is possible for errors, omissions, and inaccuracies occur in these data which is beyond our control. Wildlife Key Areas (WKA) are compiled by the Yukon Department of Environment WKA Inventory Program (2014 and 2019), against 1:250,000 NTDB from various data sources. Key Areas are based on observed locations of wildlife at key times of year, not on habitat assessment. With new information, boundaries and designations of Key Areas can change and additional Key Areas can be identified. Furthermore, Key Areas are not the only sites important for wildlife. Other information sources can identify other sites important for wildlife for reasons outside the scope of the WKA Inventory Program. Updates to Key Areas occur only periodically. For the most current information, please consult with the Regional Biologist for your area of interest. If you have questions or would like to contribute to the WKA database, please contact the WKA Inventory Program (Yukon Government). Digital copies of this map may be obtained from the Dawson Regional Planning Commission and the Yukon Land Use Planning Council websites at dawson.planyukon.ca and www.planyukon.ca

Caribou Overlays and Wetlands | Map 1.2

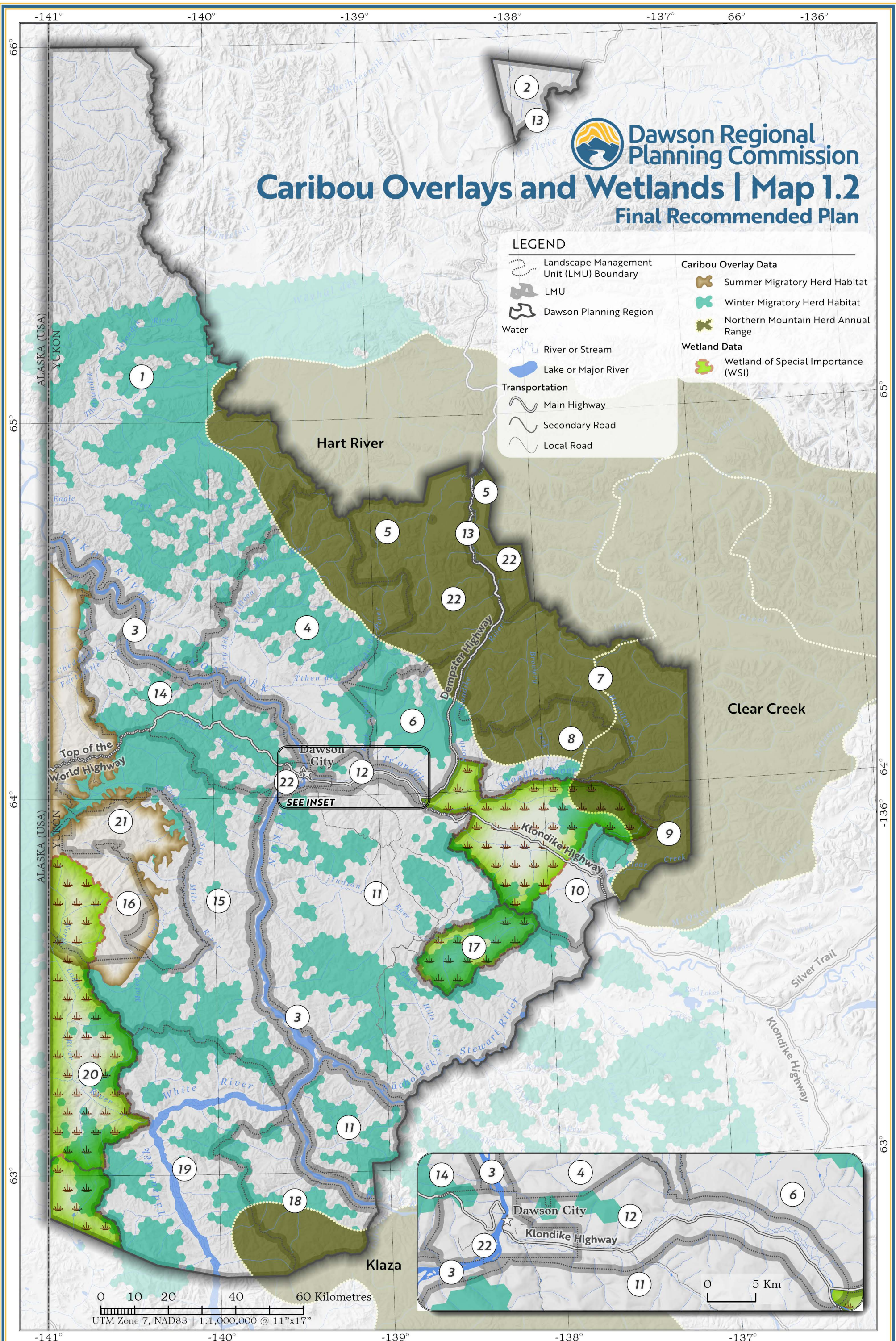
Final Recommended Plan



Dawson Regional
Planning Commission

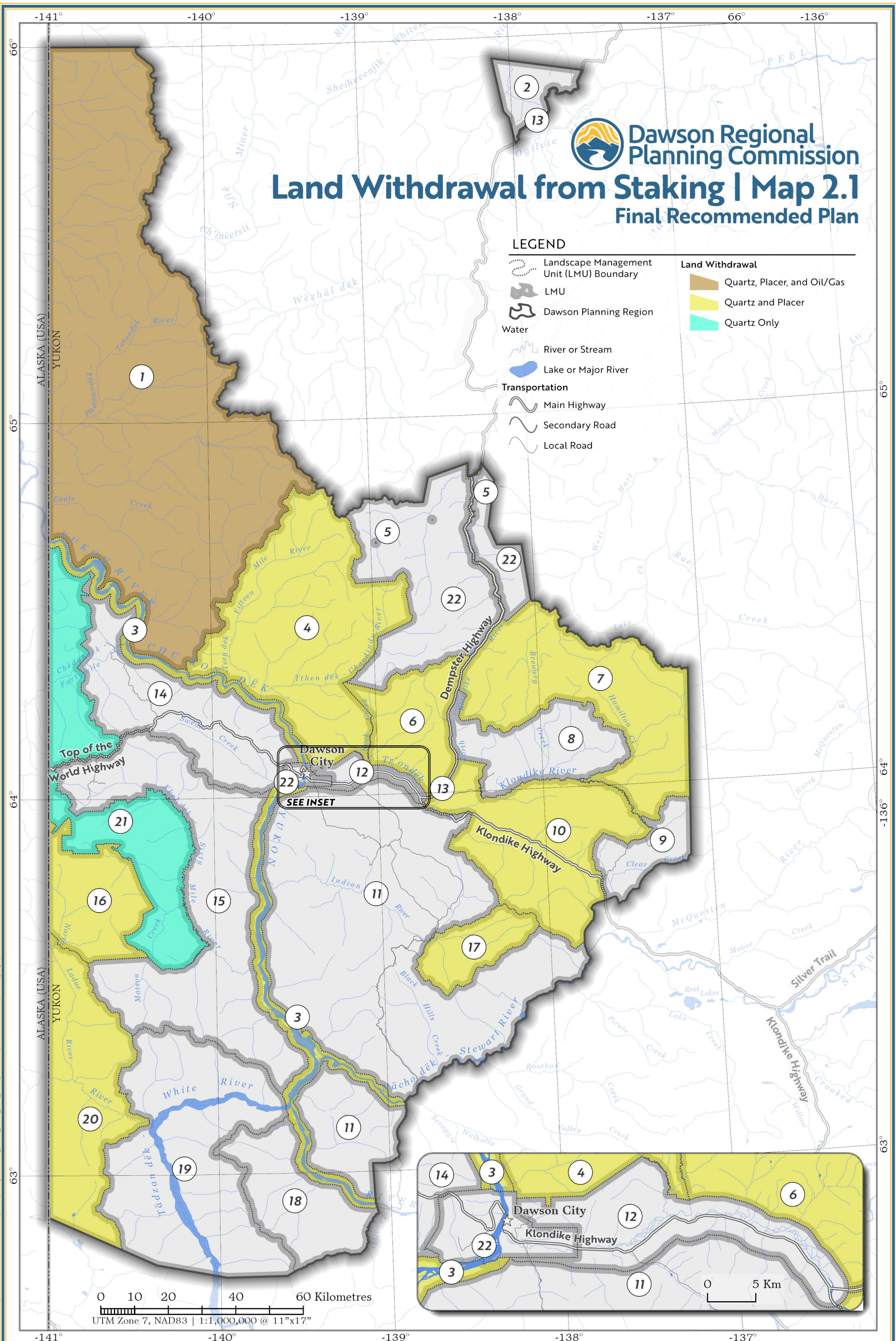
LEGEND

- Landscape Management Unit (LMU) Boundary
- LMU
- Dawson Planning Region
- Water**
 - River or Stream
 - Lake or Major River
- Transportation**
 - Main Highway
 - Secondary Road
 - Local Road
- Caribou Overlay Data**
 - Summer Migratory Herd Habitat
 - Winter Migratory Herd Habitat
 - Northern Mountain Herd Annual Range
- Wetland Data**
 - Wetland of Special Importance (WSI)



File & Layout: DRPC Final Plan Projects | Map01to08 LMU Data and Designations | 2026-03-19 | Cartography: Borealis Geomatics

Data sources: Maps in this series includes base and thematic data provided by NRCan, GeoYukon (Yukon Government), Trondëk Hwëch'in Government, US National Parks Service, Ducks Unlimited Canada, YLUPC, NYPC, PWPC, or DRPC. **Data disclaimer:** This map is a graphical representation depicting the approximate size, configuration, and spatial relationship of geographic features. Some datasets have specific disclaimers available from the data provider. While great care has been taken to ensure the best possible quality, this document is neither intended for legal descriptions nor to calculate precise areas, dimensions, or distances. It is possible for errors, omissions, and inaccuracies occur in these data which is beyond our control. Wildlife Key Areas (WKA) are compiled by the Yukon Department of Environment WKA Inventory Program (2014 and 2019), against 1250,000 NTDB from various data sources. Key Areas are based on observed locations of wildlife at key times of year, not on habitat assessment. With new information, boundaries and designations of Key Areas can change and additional Key Areas can be identified. Furthermore, Key Areas are not the only sites important for wildlife. Other information sources can identify other sites important for reasons outside the scope of the WKA Inventory Program. Updates to Key Areas occur only periodically. For the most current information, please consult with the Regional Biologist for your area of interest. If you have questions or would like to contribute to the WKA database, please contact the WKA Inventory Program (Yukon Government). Digital copies of this map may be obtained from the Dawson Regional Planning Commission and the Yukon Land Use Planning Council websites at dawson.planyukon.ca and www.planyukon.ca

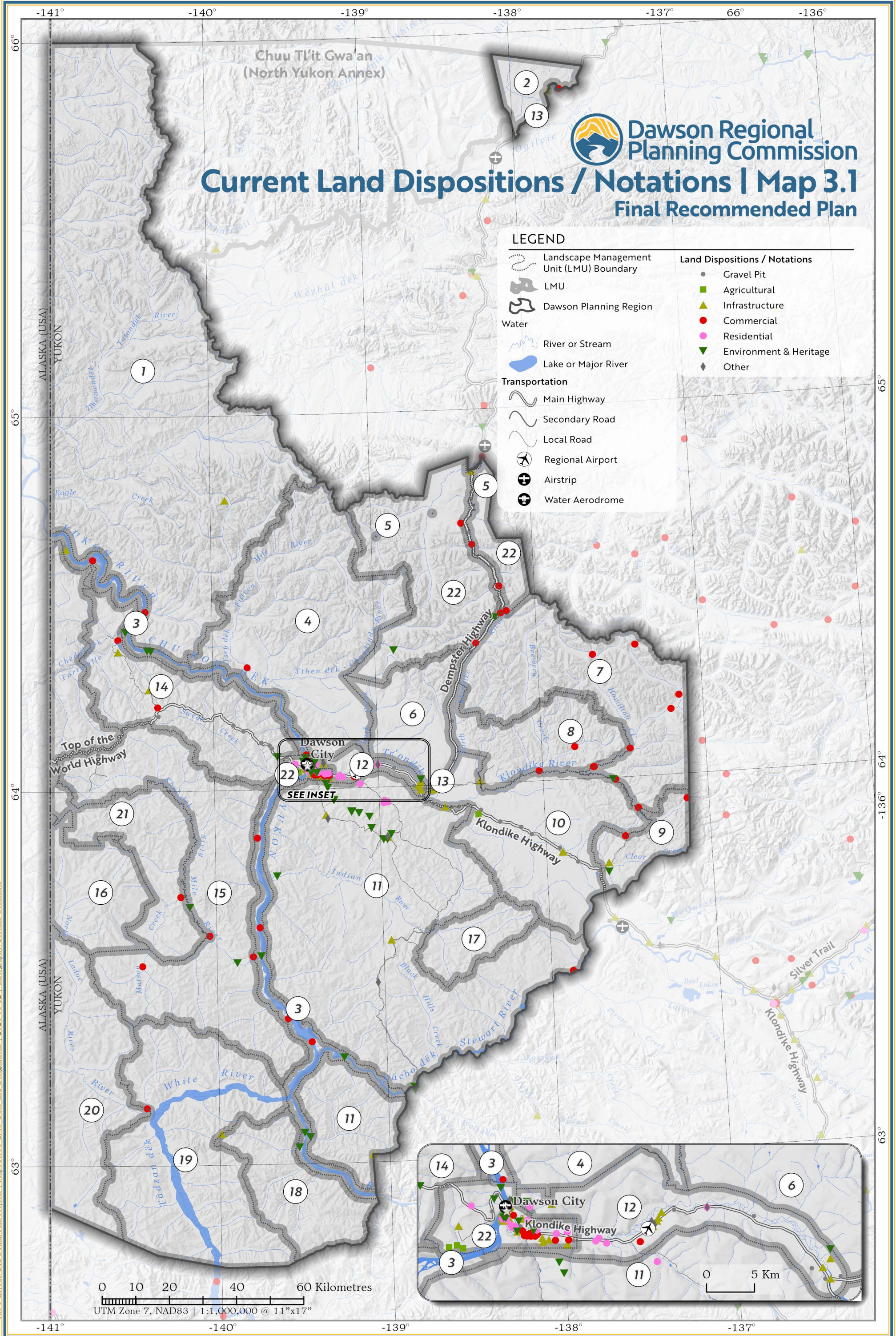


Dawson Regional Planning Commission
Land Withdrawal from Staking | Map 2.1
Final Recommended Plan

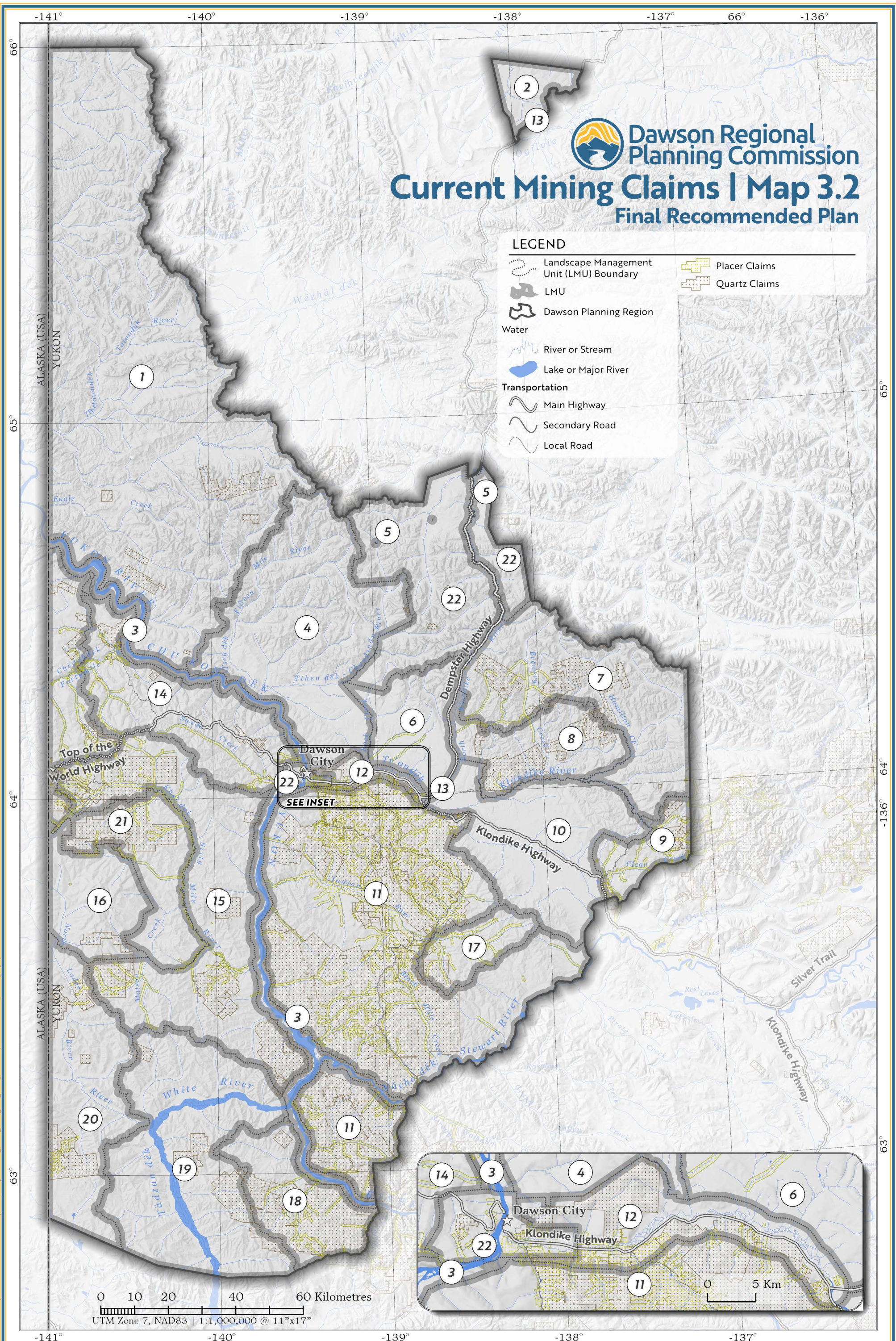
- LEGEND**
- Landscape Management Unit (LMU) Boundary
 - LMU
 - Dawson Planning Region
 - Water
 - River or Stream
 - Lake or Major River
 - Transportation**
 - Main Highway
 - Secondary Road
 - Local Road
- Land Withdrawal**
- Quartz, Placer, and Oil/Gas
 - Quartz and Placer
 - Quartz Only

File & Layout: DRPC Final Plan Projects | Map01to08 LMU Data and Designations | 2026-03-12 | Cartography: Borealis Geomatics

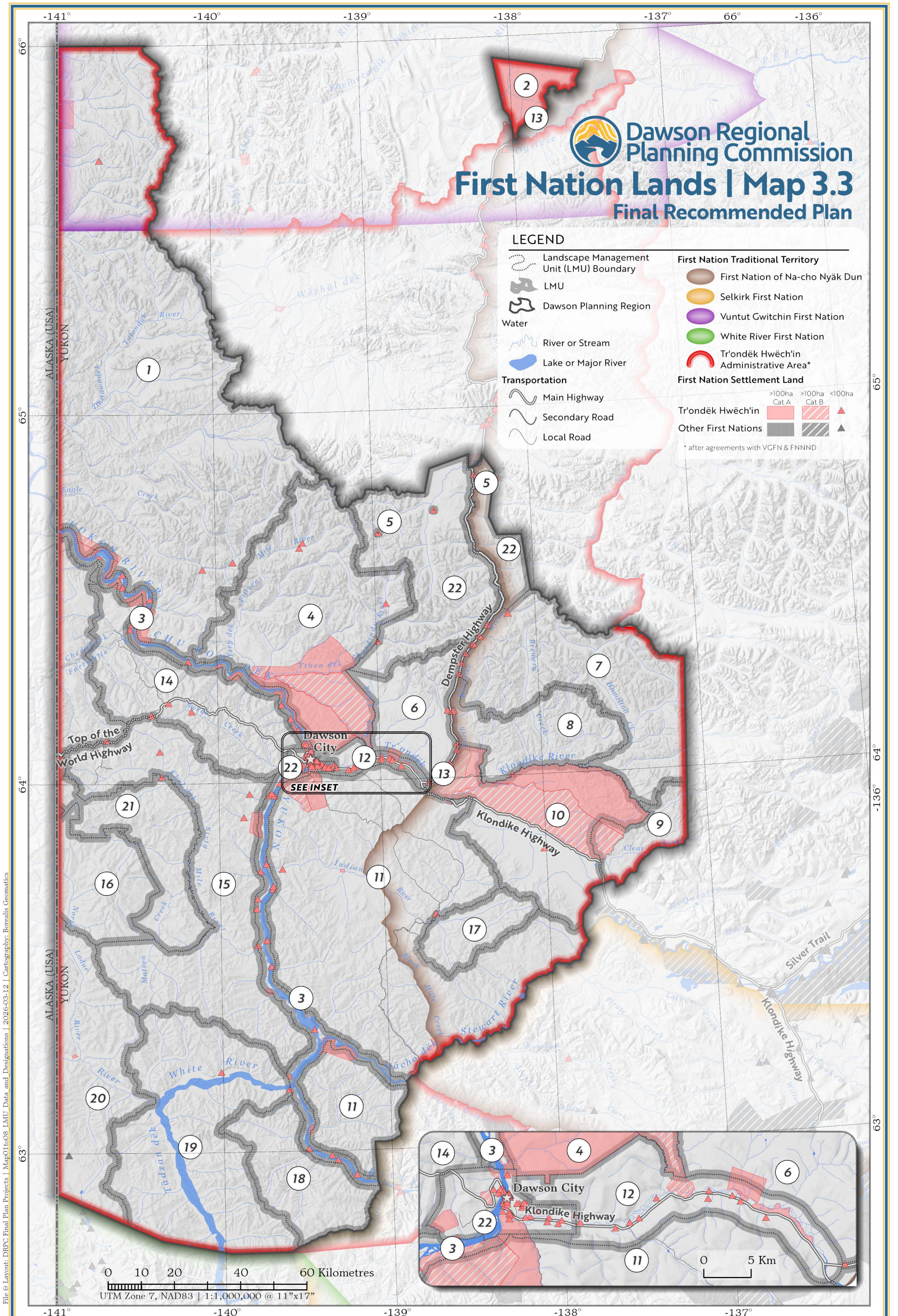
Data sources: Maps in this series includes base and thematic data provided by NRCan, GeoYukon (Yukon Government), Trondëk Hwëch'in Government, US National Parks Service, Ducks Unlimited Canada, YLUPC, NYPC, PWPC, or DRPC. **Data disclaimer:** This map is a graphical representation depicting the approximate size, configuration, and spatial relationship of geographic features. Some datasets have specific disclaimers available from the data provider. While great care has been taken to ensure the best possible quality, this document is neither intended for legal descriptions nor to calculate precise areas, dimensions, or distances. It is possible for errors, omissions, and inaccuracies occur in these data which is beyond our control. Wildlife Key Areas (WKA) are compiled by the Yukon Department of Environment WKA Inventory Program (2014 and 2019), against 1:250,000 NTDB from various data sources. Key Areas are based on observed locations of wildlife at key times of year, not on habitat assessment. With new information, boundaries and designations of Key Areas can change and additional Key Areas can be identified. Furthermore, Key Areas are not the only sites important for wildlife. Other information sources can identify other sites important for wildlife for reasons outside the scope of the WKA Inventory Program. Updates to Key Areas occur only periodically. For the most current information, please consult with the Regional Biologist for your area of interest. If you have questions or would like to contribute to the WKA database, please contact the WKA Inventory Program (Yukon Government). Digital copies of this map may be obtained from the Dawson Regional Planning Commission and the Yukon Land Use Planning Council websites at dawson.planyukon.ca and www.planyukon.ca



File & Layout: DRPC Final Plan Projects | Map01to08 LMU Data and Designations | 2026-03-12 | Cartography: Borealis Geomatics



File & Layout: DRPC Final Plan Projects | Map01to08 LMU Data and Designations | 2026-03-12 | Cartography: Borealis Geomatics

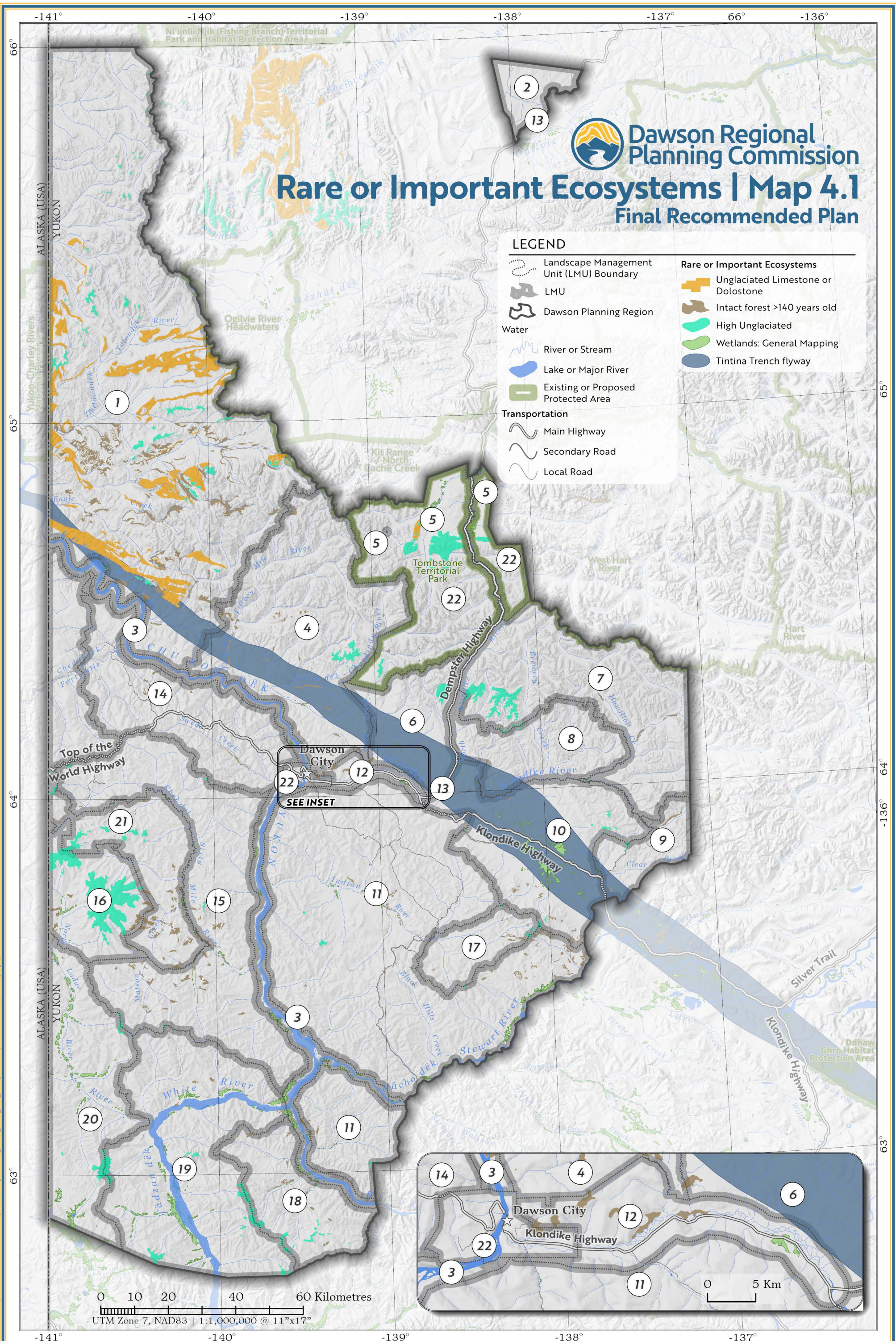


Dawson Regional Planning Commission
First Nation Lands | Map 3.3
Final Recommended Plan

LEGEND

- Landscape Management Unit (LMU) Boundary
 - LMU
 - Dawson Planning Region
 - Water**
 - River or Stream
 - Lake or Major River
 - Transportation**
 - Main Highway
 - Secondary Road
 - Local Road
 - First Nation Traditional Territory**
 - First Nation of Na-cho Nyäk Dun
 - Selkirk First Nation
 - Vuntut Gwitchin First Nation
 - White River First Nation
 - Tr'ondëk Hwëch'in Administrative Area*
 - First Nation Settlement Land**
 - >100ha Cat A
 - >100ha Cat B
 - <100ha
 - Tr'ondëk Hwëch'in**
 - >100ha
 - <100ha
 - Other First Nations**
 - >100ha
 - <100ha
- * after agreements with VGFN & FNNND

File & Layout: DRPC Final Plan Projects | Map01to08 LMU Data and Designations | 2026-03-12 | Cartography: Borealis Geomatics

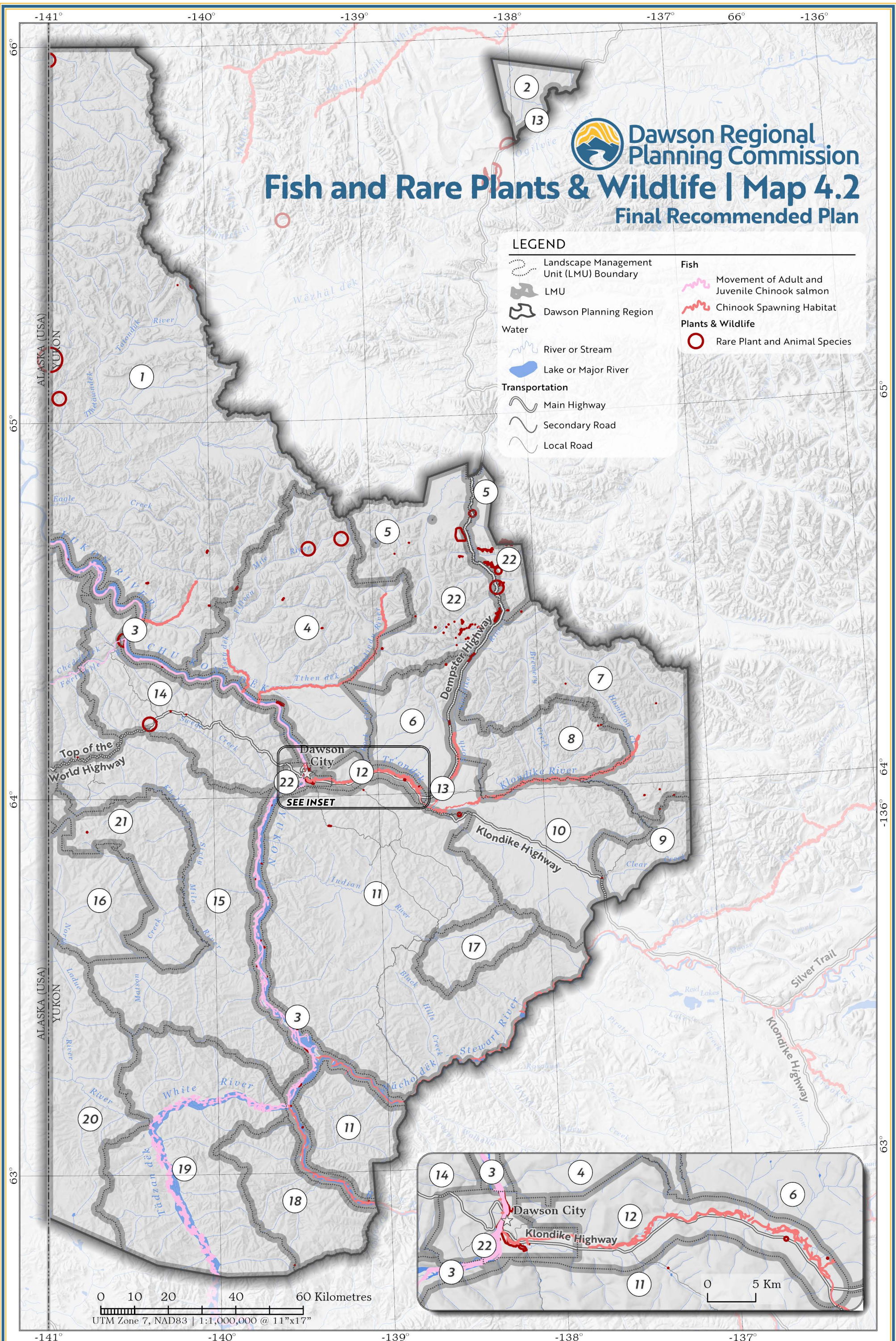


Dawson Regional Planning Commission
Rare or Important Ecosystems | Map 4.1
Final Recommended Plan

LEGEND

Landscape Management Unit (LMU) Boundary	Rare or Important Ecosystems: Unglaciaded Limestone or Dolostone
LMU	Intact forest >140 years old
Dawson Planning Region	High Unglaciaded
Water	Wetlands: General Mapping
River or Stream	Tintina Trench flyway
Lake or Major River	
Existing or Proposed Protected Area	
Transportation	
Main Highway	
Secondary Road	
Local Road	

File & Layout: DRPC Final Plan Projects | Map01to08 LMU Data and Designations | 2026-03-12 | Cartography: Borealis Geomatics



Dawson Regional Planning Commission
Fish and Rare Plants & Wildlife | Map 4.2
Final Recommended Plan

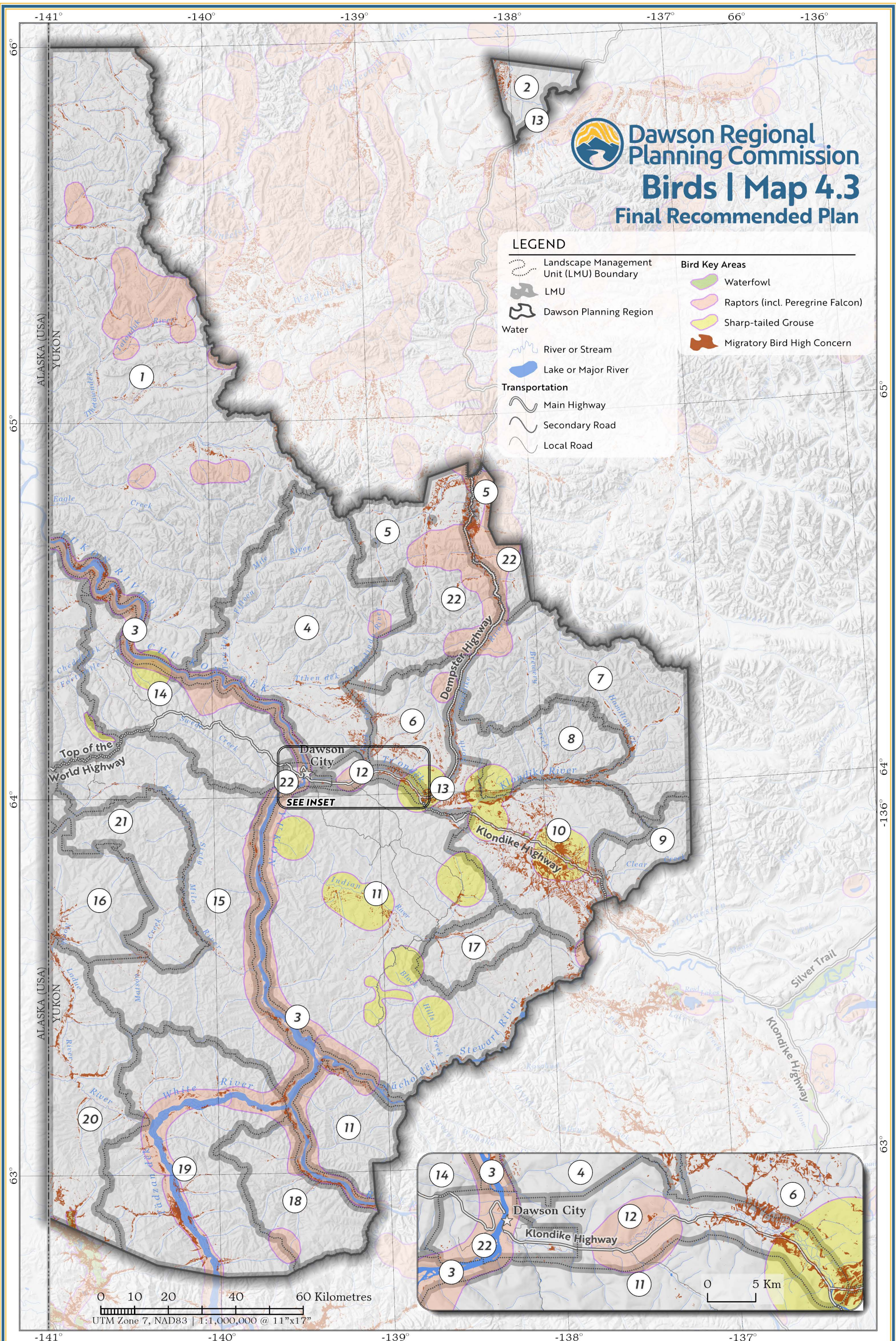
LEGEND

	Landscape Management Unit (LMU) Boundary		Fish
	LMU		Movement of Adult and Juvenile Chinook salmon
	Dawson Planning Region		Chinook Spawning Habitat
	Water		Plants & Wildlife
	River or Stream		Rare Plant and Animal Species
	Lake or Major River		
	Transportation		
	Main Highway		
	Secondary Road		
	Local Road		

File & Layout: DRPC Final Plan Projects | Map01to08 LMU Data and Designations | 2026-03-19 | Cartography: Borealis Geomatics

Data sources: Maps in this series includes base and thematic data provided by NRCan, GeoYukon (Yukon Government), Trondëk Hwëch'in Government, US National Parks Service, Ducks Unlimited Canada, YLUPC, NYPC, PWPC, or DRPC. **Data disclaimer:** This map is a graphical representation depicting the approximate size, configuration, and spatial relationship of geographic features. Some datasets have specific disclaimers available from the data provider. While great care has been taken to ensure the best possible quality, this document is neither intended for legal descriptions nor to calculate precise areas, dimensions, or distances. It is possible for errors, omissions, and inaccuracies occur in these data which is beyond our control. Wildlife Key Areas (WKA) are compiled by the Yukon Department of Environment WKA Inventory Program (2014 and 2019), against 1250,000 NTDB from various data sources. Key Areas are based on observed locations of wildlife at key times of year, not on habitat assessment. With new information, boundaries and designations of Key Areas can change and additional Key Areas can be identified. Furthermore, Key Areas are not the only sites important for wildlife. Other information sources can identify other sites important for wildlife for reasons outside the scope of the WKA Inventory Program. Updates to Key Areas occur only periodically. For the most current information, please consult with the Regional Biologist for your area of interest. If you have questions or would like to contribute to the WKA database, please contact the WKA Inventory Program (Yukon Government). Digital copies of this map may be obtained from the Dawson Regional Planning Commission and the Yukon Land Use Planning Council websites at dawson.planyukon.ca and www.planyukon.ca

Final Recommended Dawson Regional Land Use Plan © Dawson Regional Planning Commission, March 2026

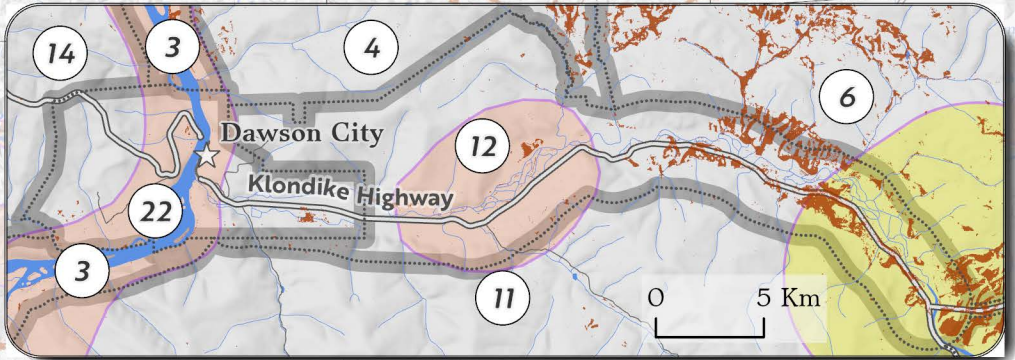


Dawson Regional Planning Commission
Birds | Map 4.3
Final Recommended Plan

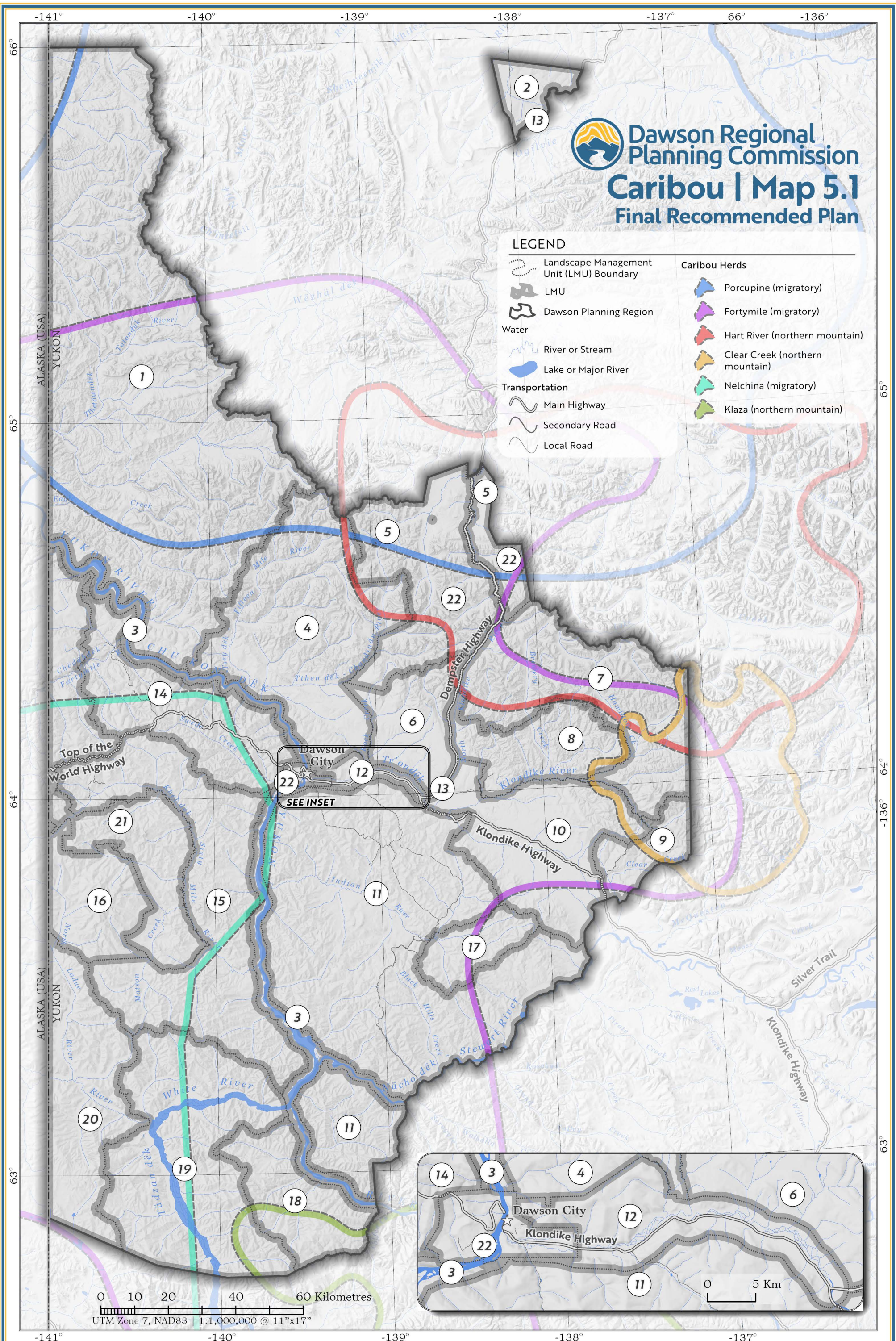
LEGEND

Landscape Management Unit (LMU) Boundary	Bird Key Areas: Waterfowl
LMU	Bird Key Areas: Raptors (incl. Peregrine Falcon)
Dawson Planning Region	Bird Key Areas: Sharp-tailed Grouse
Water	Bird Key Areas: Migratory Bird High Concern
River or Stream	
Lake or Major River	
Transportation	
Main Highway	
Secondary Road	
Local Road	

0 10 20 40 60 Kilometres
 UTM Zone 7, NAD83 | 1:1,000,000 @ 11"x17"



File & Layout: DRPC Final Plan Projects | Map01to08 LMU Data and Designations | 2026-03-19 | Cartography: Borealis Geomatics

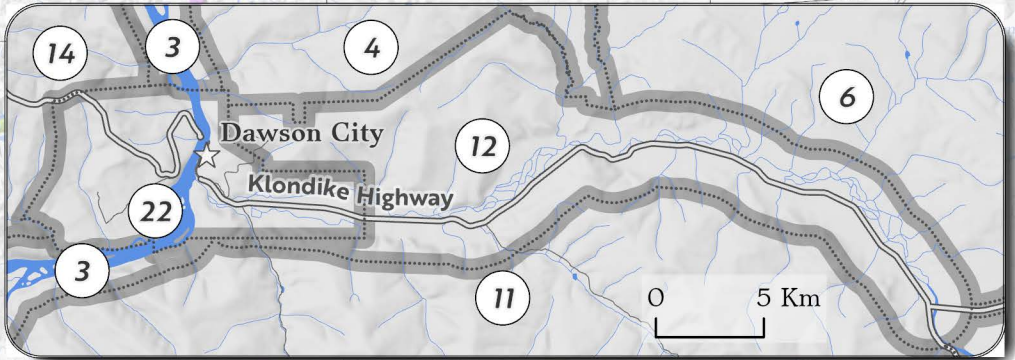


Dawson Regional Planning Commission
Caribou | Map 5.1
Final Recommended Plan

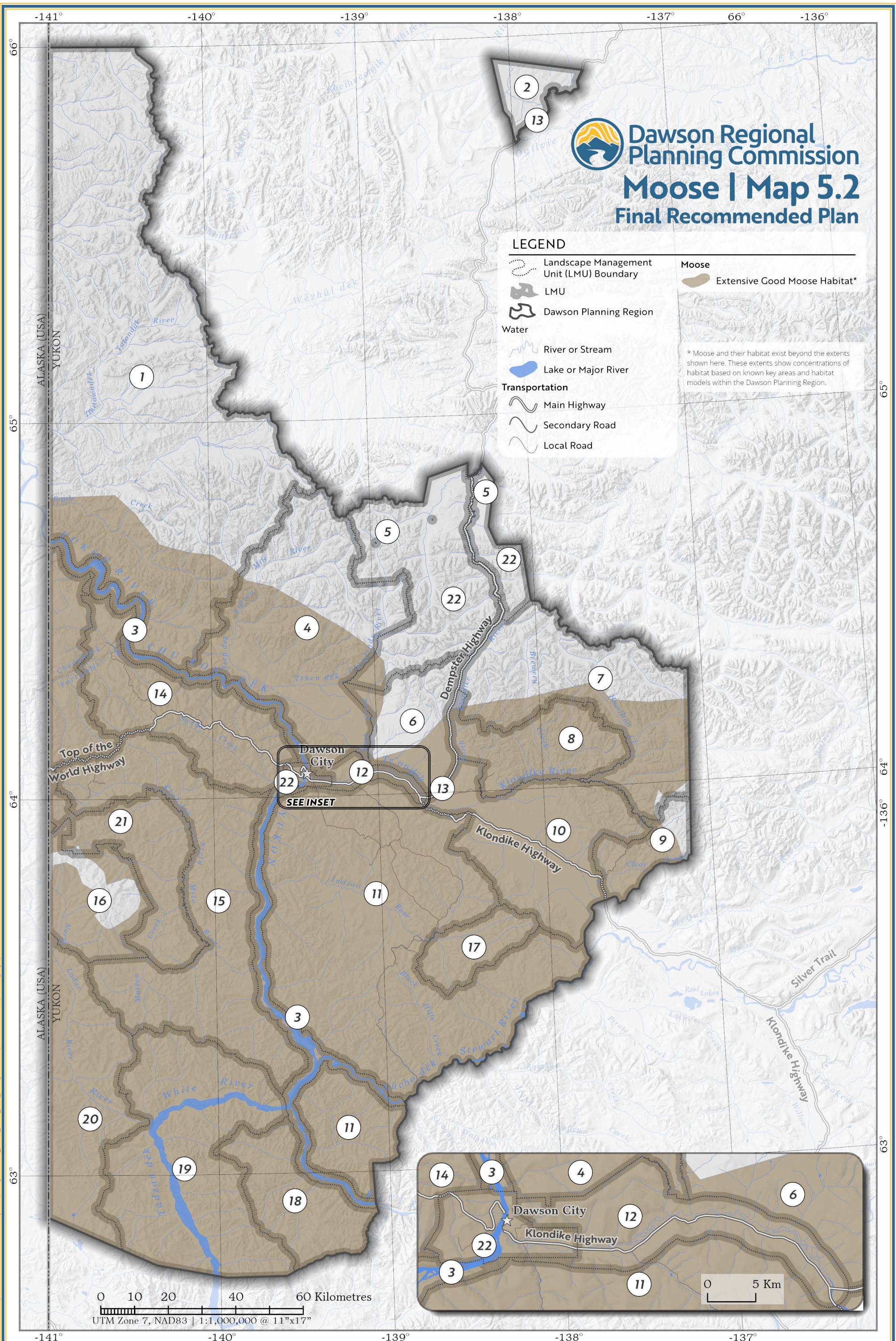
LEGEND

Landscape Management Unit (LMU) Boundary	Caribou Herds
LMU	Porcupine (migratory)
Dawson Planning Region	Fortymile (migratory)
Water	Hart River (northern mountain)
River or Stream	Clear Creek (northern mountain)
Lake or Major River	Nelchina (migratory)
Transportation	Klaza (northern mountain)
Main Highway	
Secondary Road	
Local Road	

0 10 20 40 60 Kilometres
 UTM Zone 7, NAD83 | 1:1,000,000 @ 11"x17"



File & Layout: DRPC Final Plan Projects | Map01to08 LMU Data and Designations | 2026-03-19 | Cartography: Borealis Geomatics



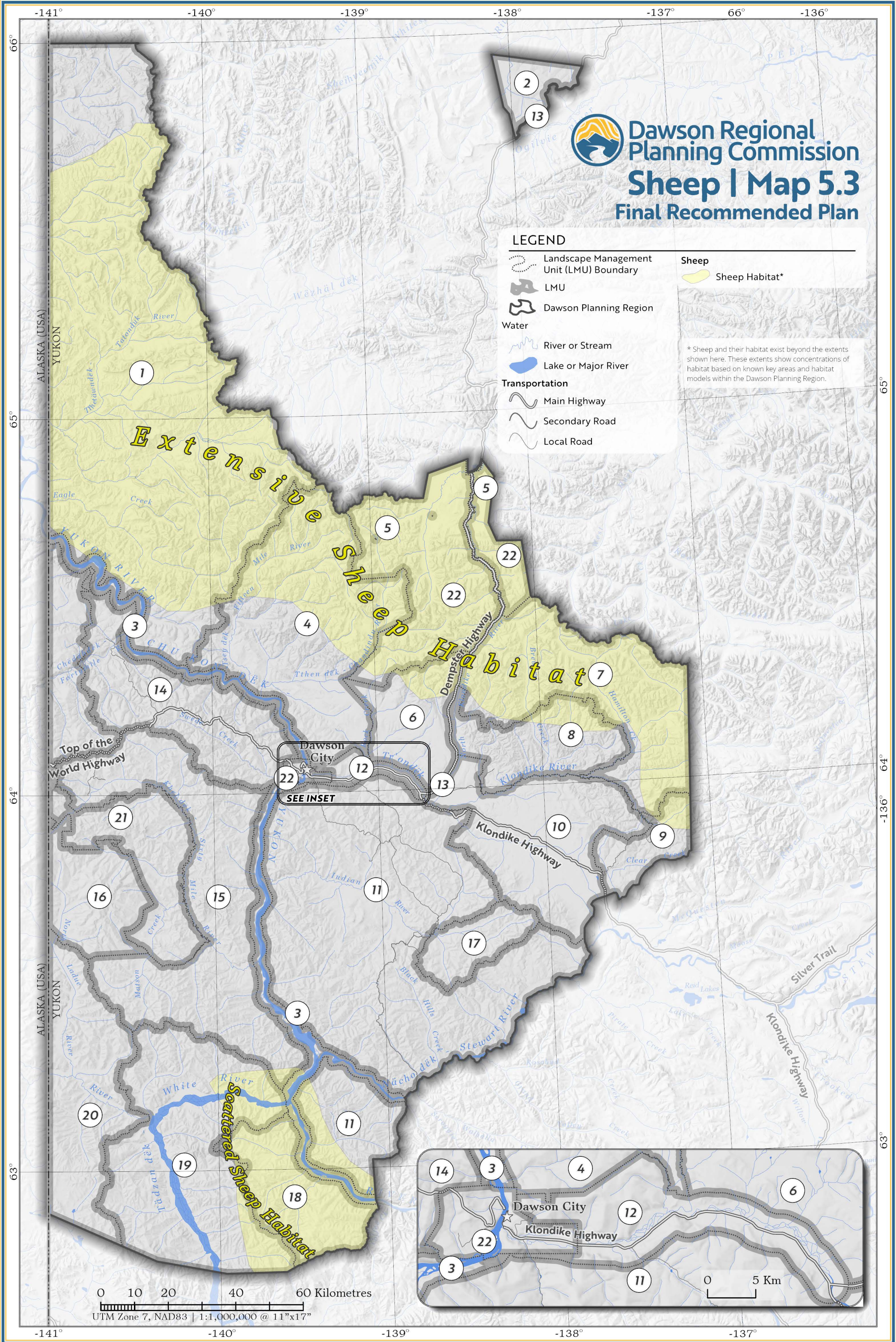
Dawson Regional Planning Commission
Moose | Map 5.2
Final Recommended Plan

LEGEND

- Landscape Management Unit (LMU) Boundary
- LMU
- Dawson Planning Region
- Water**
 - River or Stream
 - Lake or Major River
- Transportation**
 - Main Highway
 - Secondary Road
 - Local Road
- Moose**
 - Extensive Good Moose Habitat*

* Moose and their habitat exist beyond the extents shown here. These extents show concentrations of habitat based on known key areas and habitat models within the Dawson Planning Region.

File & Layout: DRPC Final Plan Projects | Map01to08 LMU Data and Designations | 2026-03-13 | Cartography: Borealis Geomatics



Dawson Regional Planning Commission
Sheep | Map 5.3
Final Recommended Plan

- LEGEND**
- Landscape Management Unit (LMU) Boundary
 - LMU
 - Dawson Planning Region
 - Water**
 - River or Stream
 - Lake or Major River
 - Transportation**
 - Main Highway
 - Secondary Road
 - Local Road

Sheep
 Sheep Habitat*

* Sheep and their habitat exist beyond the extents shown here. These extents show concentrations of habitat based on known key areas and habitat models within the Dawson Planning Region.

File & Layout: DRPC Final Plan Projects | Map01to08 LMU Data and Designations | 2026-03-19 | Cartography: Borealis Geomatics

Data sources: Maps in this series includes base and thematic data provided by NRCan, GeoYukon (Yukon Government), Trondec Hwech'in Government, US National Parks Service, Ducks Unlimited Canada, YLUPC, NYPC, PWPC, or DRPC. **Data disclaimer:** This map is a graphical representation depicting the approximate size, configuration, and spatial relationship of geographic features. Some datasets have specific disclaimers available from the data provider. While great care has been taken to ensure the best possible quality, this document is neither intended for legal descriptions nor to calculate precise areas, dimensions, or distances. It is possible for errors, omissions, and inaccuracies occur in these data which is beyond our control. Wildlife Key Areas (WKA) are compiled by the Yukon Department of Environment WKA Inventory Program (2014 and 2019), against 1:250,000 NTDB from various data sources. Key Areas are based on observed locations of wildlife at key times of year, not on habitat assessment. With new information, boundaries and designations of Key Areas can change and additional Key Areas can be identified. Furthermore, Key Areas are not the only sites important for wildlife. Other information sources can identify other sites important for wildlife for reasons outside the scope of the WKA Inventory Program. Updates to Key Areas occur only periodically. For the most current information, please consult with the Regional Biologist for your area of interest. If you have questions or would like to contribute to the WKA database, please contact the WKA Inventory Program (Yukon Government). Digital copies of this map may be obtained from the Dawson Regional Planning Commission and the Yukon Land Use Planning Council websites at dawson.planyukon.ca and www.planyukon.ca

First Nations Heritage & Cultural Resources | Map 6.1

Final Recommended Plan



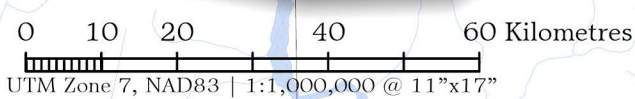
Dawson Regional
Planning Commission

LEGEND

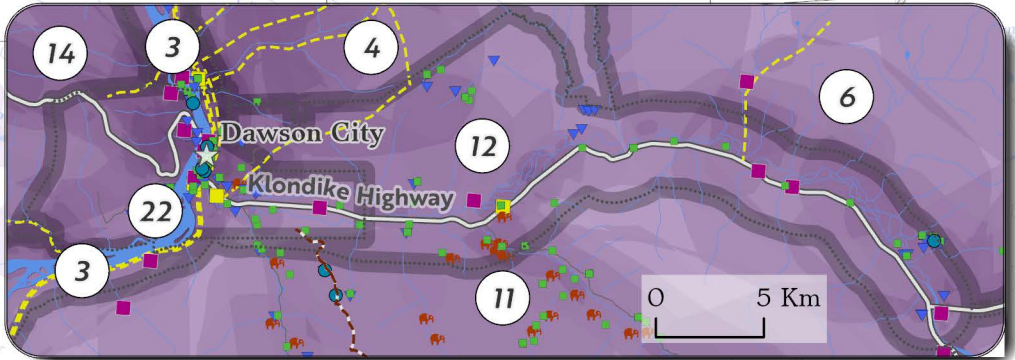
- Landscape Management Unit (LMU) Boundary
- LMU
- Dawson Planning Region
- Water**
 - River or Stream
 - Lake or Major River
- Transportation**
 - Main Highway
 - Secondary Road
 - Local Road
- Recorded Historic Resource
- Archaeological Site
- Paleontological Site
- Heritage Notation: Ridge Road Trail
- Tr'ondëk Hwëch'in (TH) Land Use Mapping***
 - A Few
 - Many
 - Land Use Sites (2018/19)
 - Important Community Site
 - TH Traditional Trail

*discrete mapped features include land use from three categories (1) provisional, (2) cultural, and (3) income generating activities (past and present). Overlapping features may include overlapping users, uses, or a combination of the two. Categorization of overlapping features helps illustrate intensity of land use as demonstrated by the dataset.

SEE INSET



UTM Zone 7, NAD83 | 1:1,000,000 @ 11"x17"



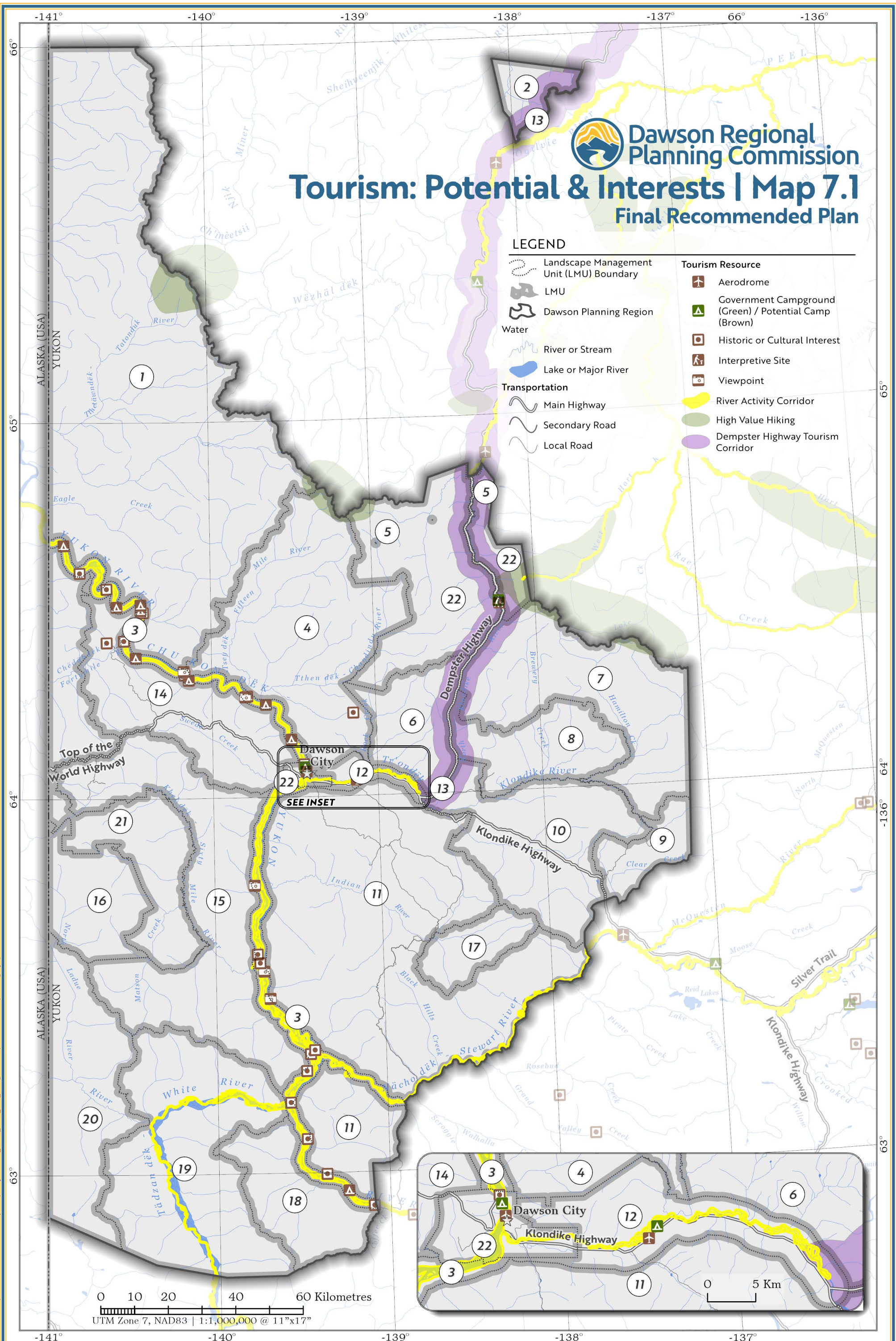
Dawson Regional Planning Commission

Tourism: Potential & Interests | Map 7.1

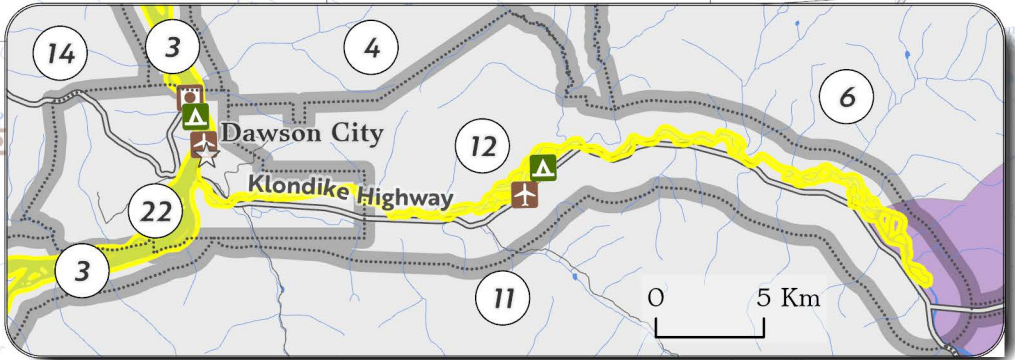
Final Recommended Plan

LEGEND

- | | |
|--|--|
| <ul style="list-style-type: none"> Landscape Management Unit (LMU) Boundary LMU Dawson Planning Region Water River or Stream Lake or Major River Transportation Main Highway Secondary Road Local Road | <ul style="list-style-type: none"> Tourism Resource Aerodrome Government Campground (Green) / Potential Camp (Brown) Historic or Cultural Interest Interpretive Site Viewpoint River Activity Corridor High Value Hiking Dempster Highway Tourism Corridor |
|--|--|



0 10 20 40 60 Kilometres
 UTM Zone 7, NAD83 | 1:1,000,000 @ 11"x17"



File & Layout: DRPC Final Plan Projects | Map01to08 LMU Data and Designations | 2026-03-13 | Cartography: Borealis Geomatics

Data sources: Maps in this series includes base and thematic data provided by NRCan, GeoYukon (Yukon Government), Trondëk Hwëch'in Government, US National Parks Service, Ducks Unlimited Canada, YLUPC, NYPC, PWPC, or DRPC. **Data disclaimer:** This map is a graphical representation depicting the approximate size, configuration, and spatial relationship of geographic features. Some datasets have specific disclaimers available from the data provider. While great care has been taken to ensure the best possible quality, this document is neither intended for legal descriptions nor to calculate precise areas, dimensions, or distances. It is possible for errors, omissions, and inaccuracies occur in these data which is beyond our control. Wildlife Key Areas (WKA) are compiled by the Yukon Department of Environment WKA Inventory Program (2014 and 2019), against 1:250,000 NTDB from various data sources. Key Areas are based on observed locations of wildlife at key times of year, not on habitat assessment. With new information, boundaries and designations of Key Areas can change and additional Key Areas can be identified. Furthermore, Key Areas are not the only sites important for wildlife. Other information sources can identify other sites important for wildlife for reasons outside the scope of the WKA Inventory Program. Updates to Key Areas occur only periodically. For the most current information, please consult with the Regional Biologist for your area of interest. If you have questions or would like to contribute to the WKA database, please contact the WKA Inventory Program (Yukon Government). Digital copies of this map may be obtained from the Dawson Regional Planning Commission and the Yukon Land Use Planning Council websites at dawson.planyukon.ca and www.planyukon.ca

Forest and Water Resources: Potential & Interests | Map 7.2

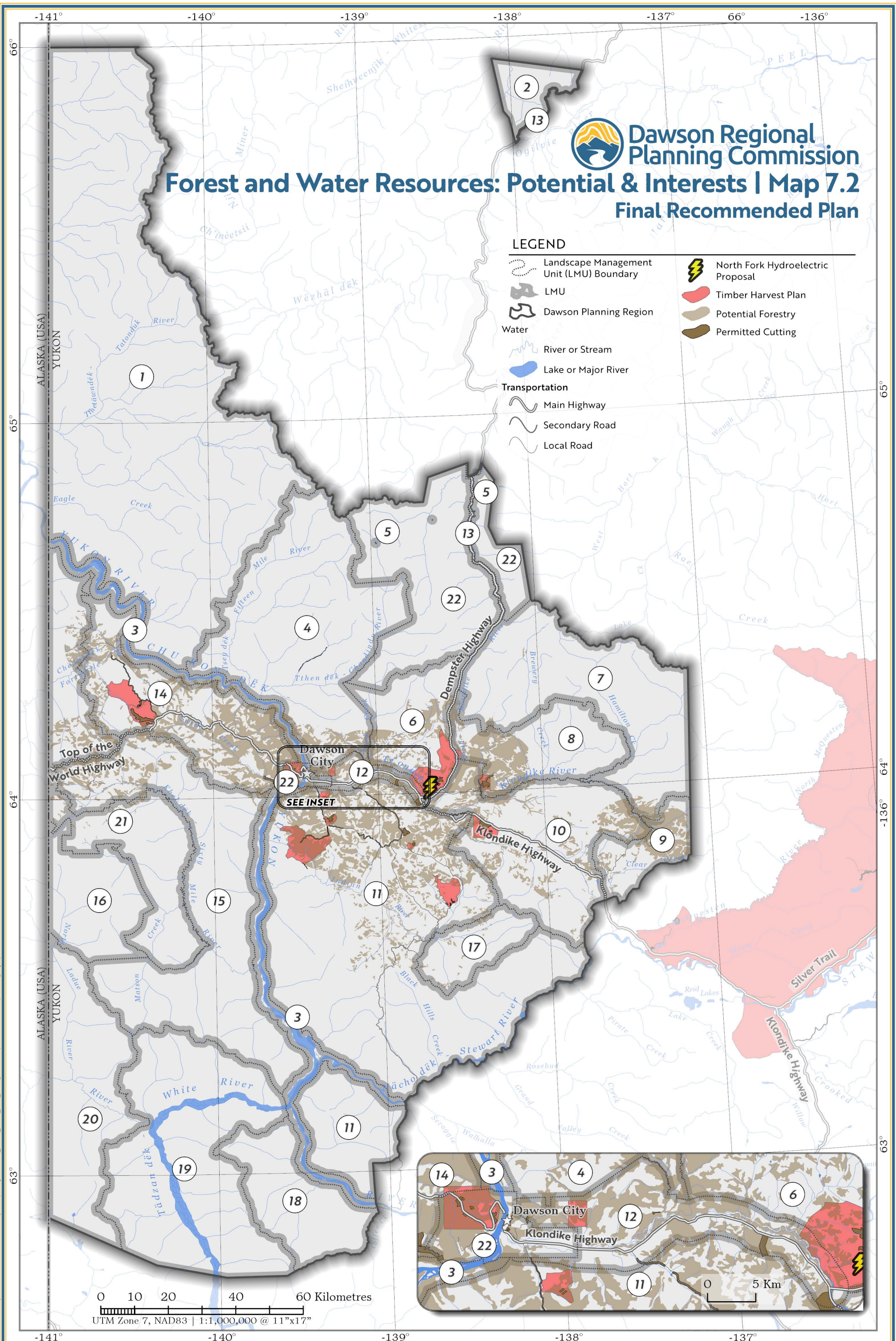
Final Recommended Plan



**Dawson Regional
Planning Commission**

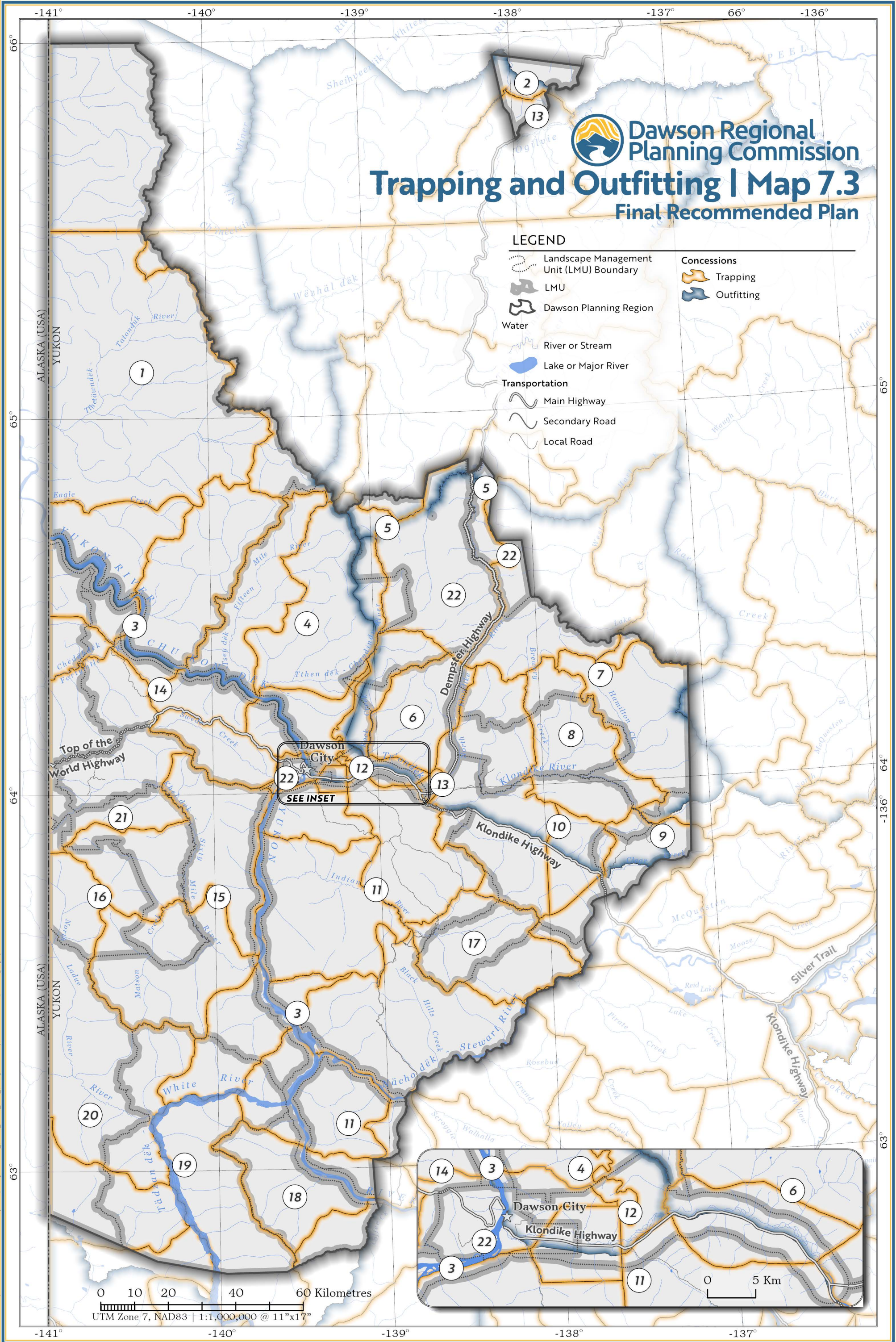
LEGEND

- Landscape Management Unit (LMU) Boundary
- LMU
- Dawson Planning Region
- Water
- River or Stream
- Lake or Major River
- Transportation
- Main Highway
- Secondary Road
- Local Road
- North Fork Hydroelectric Proposal
- Timber Harvest Plan
- Potential Forestry
- Permitted Cutting



File & Layout: DRPC Final Plan Projects | Map01to08 LMU Data and Designations | 2026-03-13 | Cartography: Borealis Geomatics

Data sources: Maps in this series includes base and thematic data provided by NRCan, GeoYukon (Yukon Government), Trondëk Hwëch'in Government, US National Parks Service, Ducks Unlimited Canada, YLUPC, NYPC, PWPC, or DRPC. **Data disclaimer:** This map is a graphical representation depicting the approximate size, configuration, and spatial relationship of geographic features. Some datasets have specific disclaimers available from the data provider. While great care has been taken to ensure the best possible quality, this document is neither intended for legal descriptions nor to calculate precise areas, dimensions, or distances. It is possible for errors, omissions, and inaccuracies occur in these data which is beyond our control. Wildlife Key Areas (WKA) are compiled by the Yukon Department of Environment WKA Inventory Program (2014 and 2019), against 1:250,000 NTDB from various data sources. Key Areas are based on observed locations of wildlife at key times of year, not on habitat assessment. With new information, boundaries and designations of Key Areas can change and additional Key Areas can be identified. Furthermore, Key Areas are not the only sites important for wildlife. Other information sources can identify other sites important for wildlife for reasons outside the scope of the WKA Inventory Program. Updates to Key Areas occur only periodically. For the most current information, please consult with the Regional Biologist for your area of interest. If you have questions or would like to contribute to the WKA database, please contact the WKA Inventory Program (Yukon Government). Digital copies of this map may be obtained from the Dawson Regional Planning Commission and the Yukon Land Use Planning Council websites at dawson.planyukon.ca and www.planyukon.ca



Dawson Regional Planning Commission
Trapping and Outfitting | Map 7.3
Final Recommended Plan

LEGEND

- Landscape Management Unit (LMU) Boundary
- LMU
- Dawson Planning Region
- Water**
- River or Stream
- Lake or Major River
- Transportation**
- Main Highway
- Secondary Road
- Local Road
- Concessions**
- Trapping
- Outfitting

File & Layout: DRPC Final Plan Projects | Map01to08 LMU Data and Designations | 2026-03-13 | Cartography: Borealis Geomatics

Data sources: Maps in this series includes base and thematic data provided by NRCan, GeoYukon (Yukon Government), Trondëk Hwëch'in Government, US National Parks Service, Ducks Unlimited Canada, YLUPC, NYPC, PWPC, or DRPC. **Data disclaimer:** This map is a graphical representation depicting the approximate size, configuration, and spatial relationship of geographic features. Some datasets have specific disclaimers available from the data provider. While great care has been taken to ensure the best possible quality, this document is neither intended for legal descriptions nor to calculate precise areas, dimensions, or distances. It is possible for errors, omissions, and inaccuracies occur in these data which is beyond our control. Wildlife Key Areas (WKA) are compiled by the Yukon Department of Environment WKA Inventory Program (2014 and 2019), against 1:250,000 NTDB from various data sources. Key Areas are based on observed locations of wildlife at key times of year, not on habitat assessment. With new information, boundaries and designations of Key Areas can change and additional Key Areas can be identified. Furthermore, Key Areas are not the only sites important for wildlife. Other information sources can identify other sites important for wildlife for reasons outside the scope of the WKA Inventory Program. Updates to Key Areas occur only periodically. For the most current information, please consult with the Regional Biologist for your area of interest. If you have questions or would like to contribute to the WKA database, please contact the WKA Inventory Program (Yukon Government). Digital copies of this map may be obtained from the Dawson Regional Planning Commission and the Yukon Land Use Planning Council websites at dawsonplanyukon.ca and www.planyukon.ca

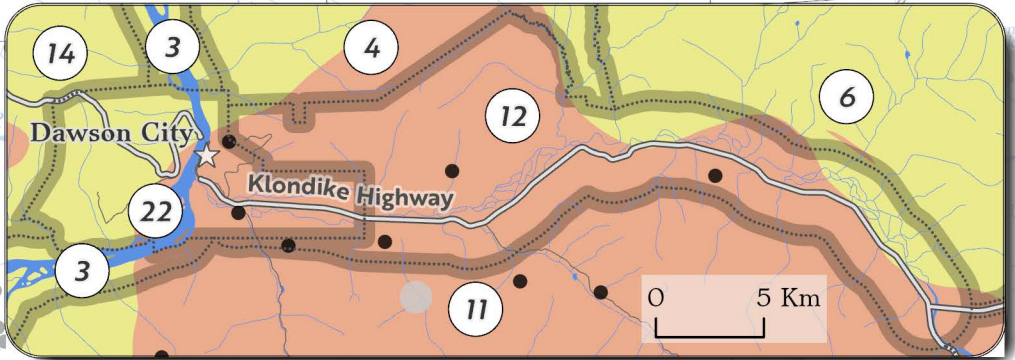
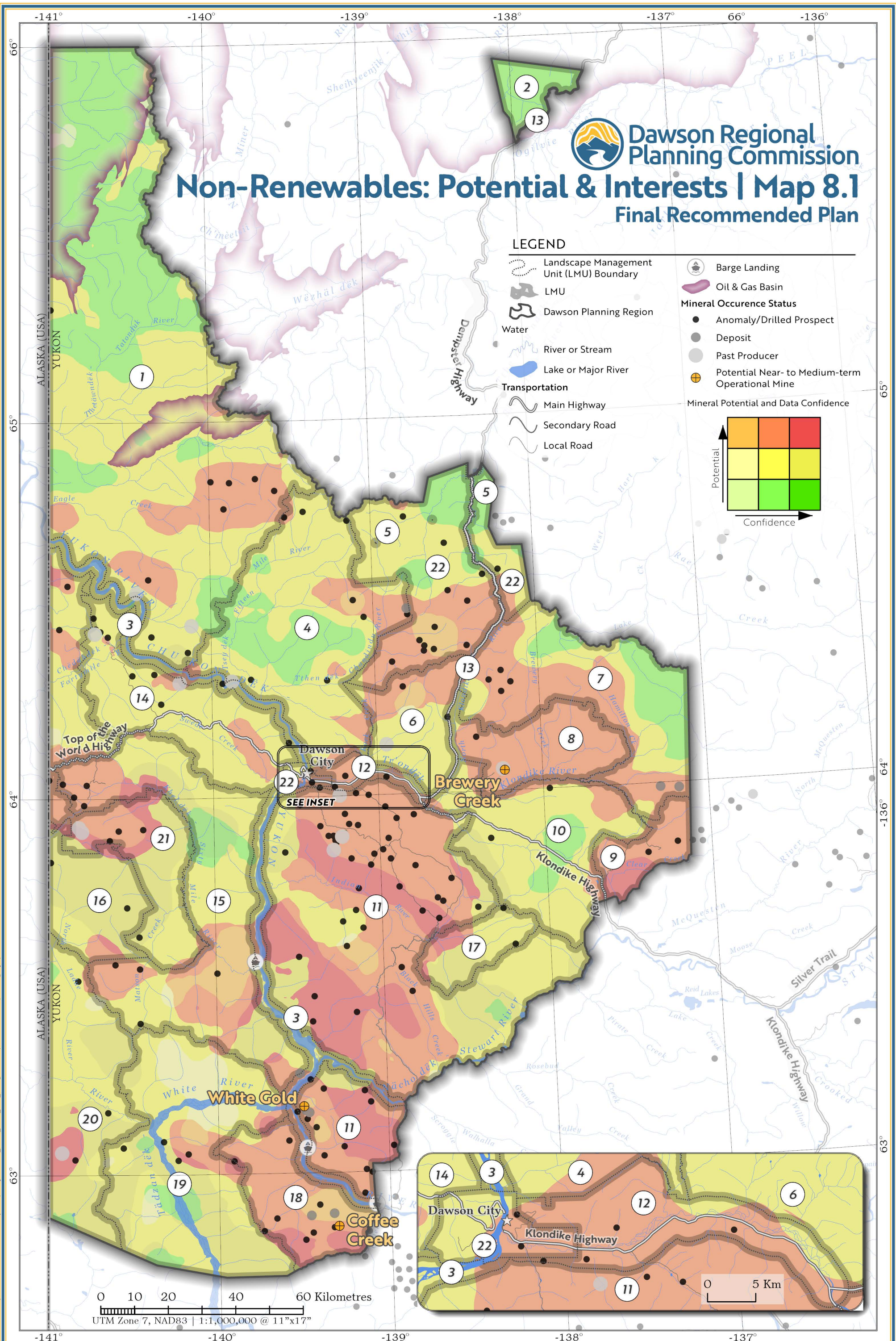
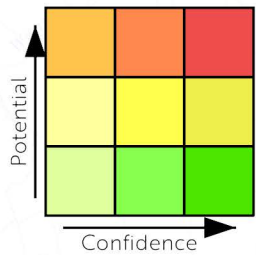
Non-Renewables: Potential & Interests | Map 8.1

Final Recommended Plan



LEGEND

- Landscape Management Unit (LMU) Boundary
- LMU
- Dawson Planning Region
- Water
- River or Stream
- Lake or Major River
- Transportation
- Main Highway
- Secondary Road
- Local Road
- Barge Landing
- Oil & Gas Basin
- Mineral Occurrence Status**
- Anomaly/Drilled Prospect
- Deposit
- Past Producer
- Potential Near- to Medium-term Operational Mine
- Mineral Potential and Data Confidence**



0 10 20 40 60 Kilometres
 UTM Zone 7, NAD83 | 1:1,000,000 @ 11"x17"

0 5 Km

File & Layout: DRPC Final Plan Projects | Map01to08 LMU Data and Designations | 2026-03-13 | Cartography: Borealis Geomatics

Data sources: Maps in this series includes base and thematic data provided by NRCan, GeoYukon (Yukon Government), Trondek Hwech'in Government, US National Parks Service, Ducks Unlimited Canada, YLUPC, NYPC, PWPC, or DRPC. **Data disclaimer:** This map is a graphical representation depicting the approximate size, configuration, and spatial relationship of geographic features. Some datasets have specific disclaimers available from the data provider. While great care has been taken to ensure the best possible quality, this document is neither intended for legal descriptions nor to calculate precise areas, dimensions, or distances. It is possible for errors, omissions, and inaccuracies occur in these data which is beyond our control. Wildlife Key Areas (WKA) are compiled by the Yukon Department of Environment WKA Inventory Program (2014 and 2019), against 1:250,000 NTDB from various data sources. Key Areas are based on observed locations of wildlife at key times of year, not on habitat assessment. With new information, boundaries and designations of Key Areas can change and additional Key Areas can be identified. Furthermore, Key Areas are not the only sites important for wildlife. Other information sources can identify other sites important for wildlife for reasons outside the scope of the WKA Inventory Program. Updates to Key Areas occur only periodically. For the most current information, please consult with the Regional Biologist for your area of interest. If you have questions or would like to contribute to the WKA database, please contact the WKA Inventory Program (Yukon Government). Digital copies of this map may be obtained from the Dawson Regional Planning Commission and the Yukon Land Use Planning Council websites at dawson.planyukon.ca and www.planyukon.ca