

Dawson Regional Land Use Plan: **Draft Plan Concepts**

Commission Meeting #6
October 6 2020





Vision Statement

For the Region

The Dawson Region encompasses a unique landscape that enables our community to build a diverse economy while maintaining a rich cultural legacy and a healthy environment.

For the Process

Shared and respectful use of natural resources is guided by the principles of sustainable development, respect for heritage and culture, and conservation of fish and wildlife habitats. Ongoing community stewardship, based on consensus building, will achieve significant and lasting social, economic, and ecological benefits for all Yukoners.

For the Plan

Our regional plan will be crafted to reflect community values and will guide the integrated use and management of land, water, and resources.



"Ongoing"

"Community"

"Stewardship"

"Sustainable Development"



Your Toolbox



Landscape Management Units



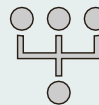
Land Designation System



Special Management Directions



General Management Directions



Cumulative Effects Management

Landscape Management Units

Dividing up the planning region into smaller areas of land based on their management intent



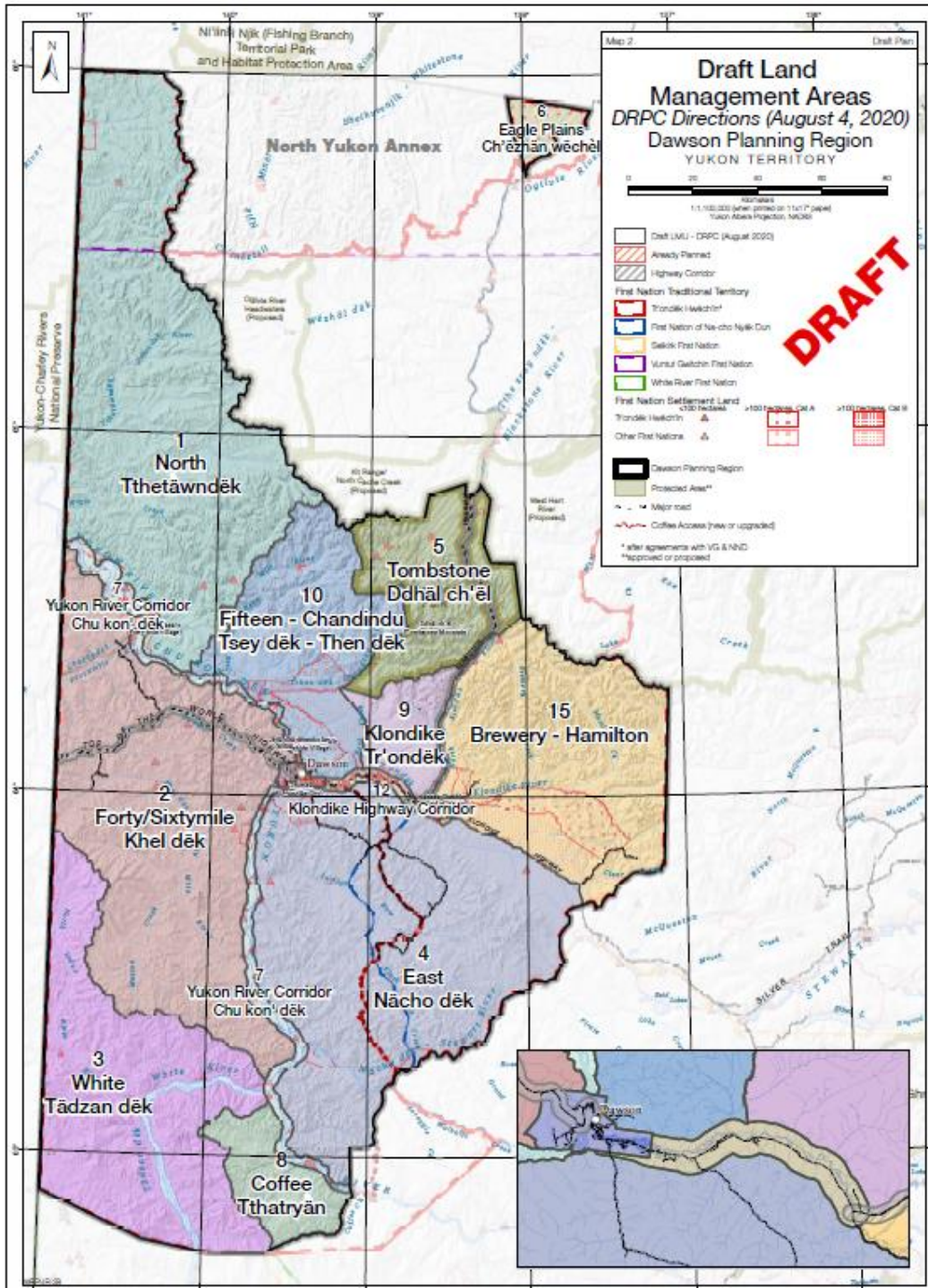
Where we're at:

- Each LMU is based on: ecological or socio-cultural values, levels of development, and land use issues
- Boundaries mostly follow existing natural or man-made barriers
- We currently have **11 DRAFT LMUs** within the Region
- We have draft Management Intent Statements for 4 areas

Remaining work:

- Preparation of remaining Management Intent Statements by staff
- Further break down of LMUs, as necessary
- Determine Draft Plan naming convention





Land Designation System

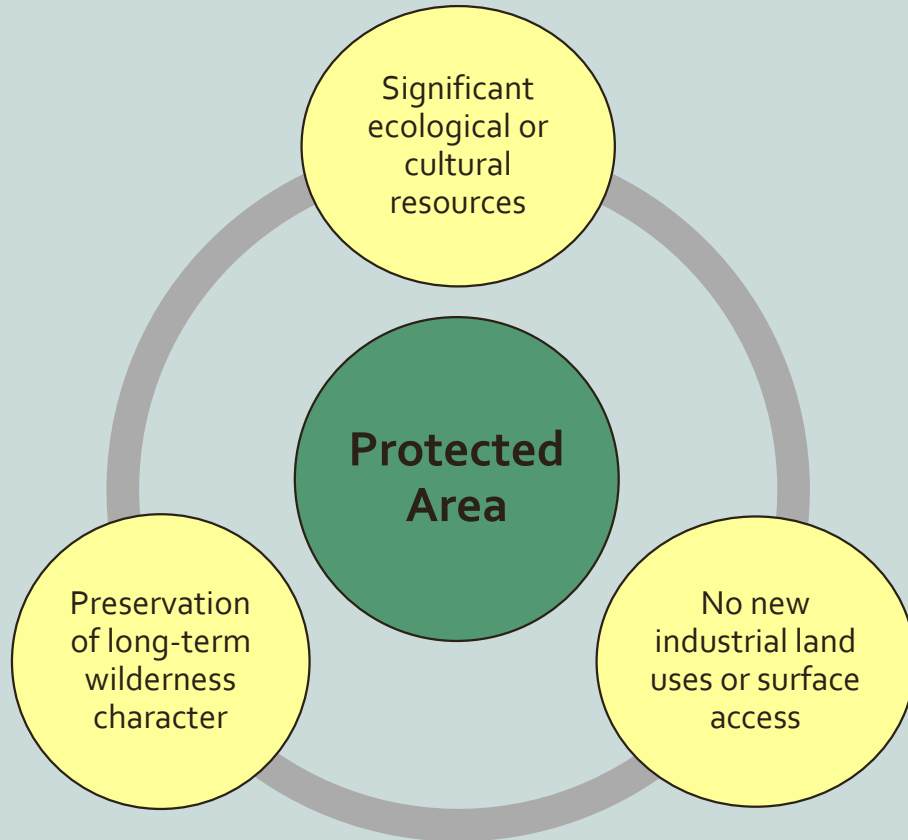
Describes the management intent in each LMU by 'zoning' different LMUs for different levels of activity



Where we're at:

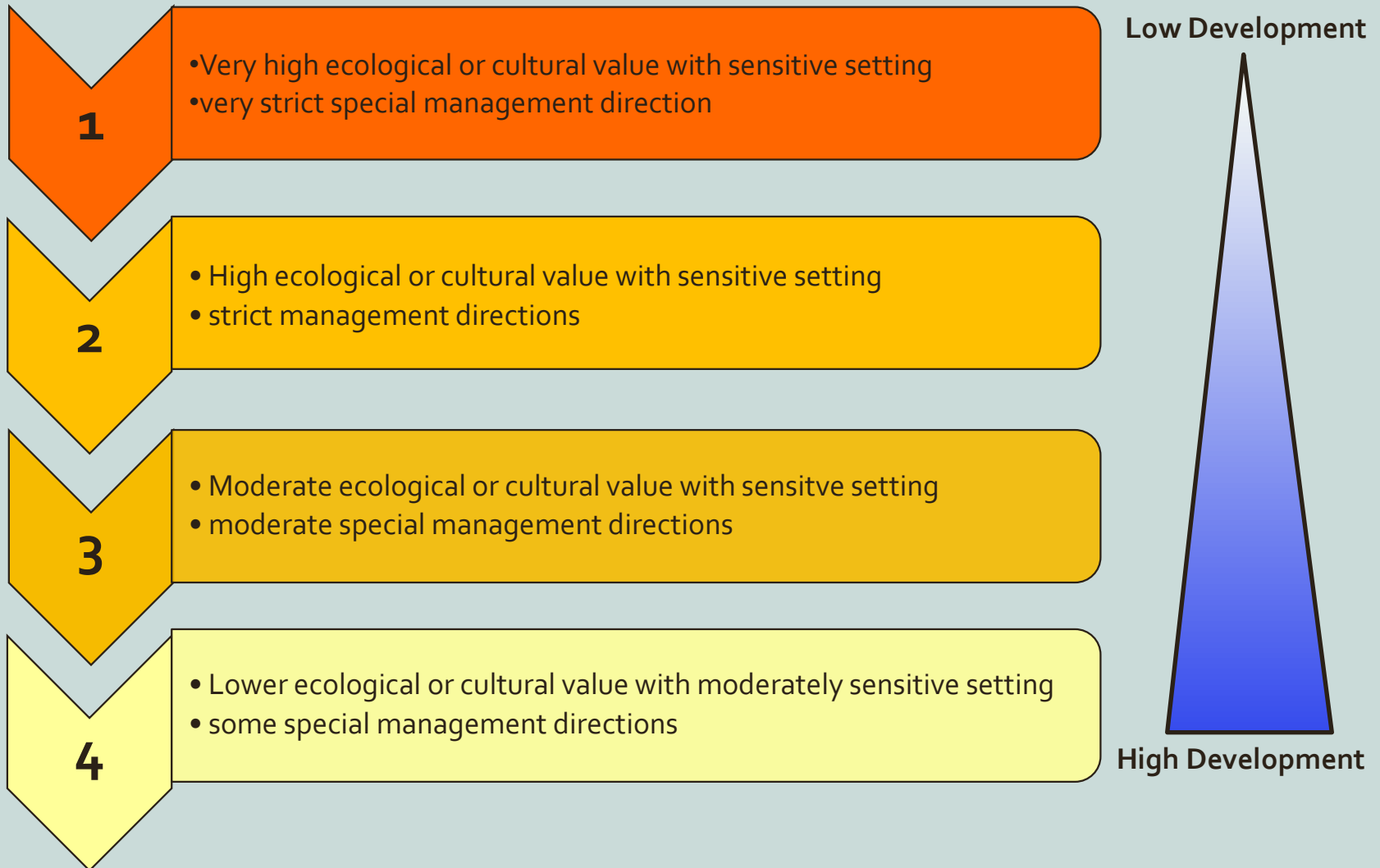
- Broad categories of zones:
 1. **Areas of Protection**
 2. **Integrated Management Zones**
 3. **Overlay Zones**
- Focusing on a “**non-prescriptive**” approach to land use. Ex: Peel and North Yukon

Areas of Protection



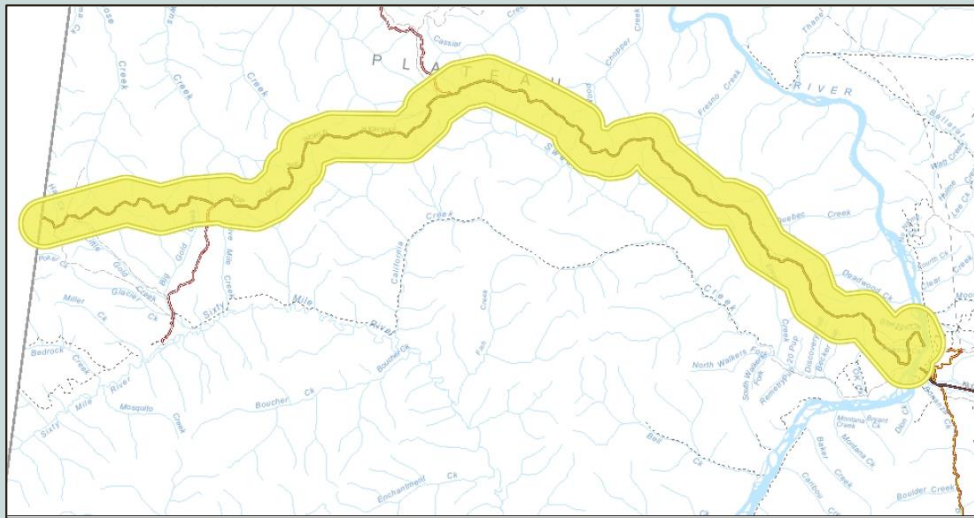
- **Where** are the areas within the Region that should be protected / conserved?
- **What** are the priority values in that area?
- **Why** should it be protected?
- **How long** should it be protected for?

Integrated Management Areas

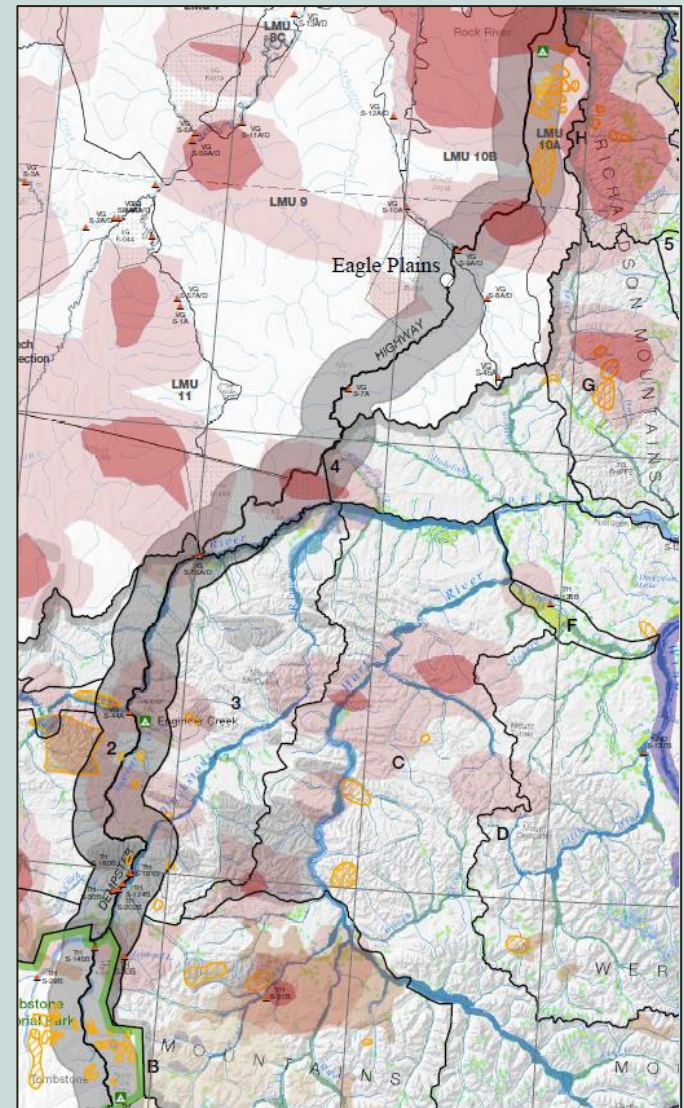


Overlay Zones

- Overlap with other designations
- Where there are features of land that require special consideration beyond the designation
- Include additional management directions and/or sub-regional planning



Top of the World Highway (Draft 2 km buffer)



Dempster Highway
Overlay (Peel and North
Yukon)

Land Designation System

Describes the management intent in each LMU by 'zoning' different LMUs for different levels of activity



Remaining work:

- **Areas of Protection:**
 - Identification of candidate areas and why
- **IMAs:**
 - How much development are you comfortable with, and where?
 - Is a threshold-based approach the right direction?
 - How many tiers are necessary?
- **Overlay Zones:**
 - Identification of where and what that will mean for land use in those areas

Special Management Directions

Conditions that will apply to land use within particular LMUs



You've already identified priority values within the draft LMUs and some general tools to use:

QUESTION #3: Based on your priority values and objectives listed above, what would you say is your management intent for this area?

- concentrate human activity fr. other areas
- protect water quality, quantity, flow.

Question #4: What planning tools (referring to the planning tools "menu" provided in your packages" would you use to plan for this area?

- timing windows to & conflict
- thresholds
- communication guidelines
- GMD'S.
- zoning → res.

Special Management Directions

For example, within specific LMUs, you can recommend to:

- Reduce temporal and spatial overlap of industrial activities and key values

Ex: Timing windows



- Minimize impacts from ground disturbance to key values

Ex: Access Management



- Coordinate development that allows for best use of land first

*Ex:
Recommended
Priority Uses*



- Others?



General Management Directions

Conditions that will apply to land use within the whole planning region, including recommendations for future policy or research



Where we're at:

- Considering what general management directions are needed on a topic by topic basis, i.e. caribou, moose, wetlands, etc.
- Working with topic experts through Technical Working Group and other stakeholders as necessary
- Researching mitigations recommended by YESAB for certain topics

Remaining work:

- We will continue to internally compile a list of general management directions for consideration in the Draft Plan



General Management Directions

For example, within the whole Region, you can recommend to:

- Reduce temporal and spatial overlap of industrial activities and key values

Ex: No Go Areas/Protection of Infrastructure



- Minimize impacts from ground disturbance to key values

Ex: Reclamation Standards



- Support non-industrial activities in all zones

Ex: Traditional Economic Activities



- Develop new policy if there is a gap

Ex: Access Management Requirements



- Conduct additional research on key topics or issues

Ex: Grizzly Bears

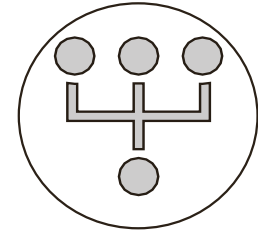


- Others?



Cumulative Effects Management

How the Plan will manage for cumulative disturbance, and effects, within the planning region



Where we're at and remaining work:

- Updating the **Cumulative Disturbance Report**: Looks at potential scenarios for future development in the Region for 4 sectors: placer, quartz, forestry, and oil and gas
- Working with a **Cumulative Effects Working Group**: To provide input on the ways cumulative effects to key species/values can be considered in the Plan
Currently exploring: Fortymile Caribou
- Discussing potential **"indicators"**: Things that can be tracked and monitored to see if cumulative effects are occurring
Currently exploring: surface disturbance, linear density, stewardship of priority lands, human use of land/resources, water withdrawals



Your Toolbox



Landscape Management Units



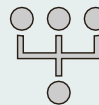
Land Designation System



Special Management Directions



General Management Directions



Cumulative Effects Management



Vision Statement

For the Region

The Dawson Region encompasses a unique landscape that enables our community to build a diverse economy while maintaining a rich cultural legacy and a healthy environment.

For the Process

Shared and respectful use of natural resources is guided by the principles of sustainable development, respect for heritage and culture, and conservation of fish and wildlife habitats. Ongoing community stewardship, based on consensus building, will achieve significant and lasting social, economic, and ecological benefits for all Yukoners.

For the Plan

Our regional plan will be crafted to reflect community values and will guide the integrated use and management of land, water, and resources.